

TELECOM REGULATORY AUTHORITY OF INDIA
(Quality of Service Division)

Dated: 4th February, 2010

Point of Interconnection (POIs) Congestion report of the Cellular Mobile Telephone Service Providers (CMTS) and Basic Telephone Service (Wireline) Providers for the months of July, August & September 2009.

The growth of mobile network is taking place at a very rapid pace and about 14.98 million subscribers are added every month. In order to ensure seamless interconnection, TRAI has been monitoring the level of congestion at the Point of Interconnection (POI) between various service providers on a monthly basis. This parameter signifies the ease with which a customer of one network is able to communicate with a customer of another network. This parameter also reflects as to how effective is the interconnection between two networks. The benchmark notified by TRAI in the QoS Regulations for this parameter is <0.5%. This means out of 200 calls between two operators only one call should face congestion problem. The result of the monitoring reveals that in a number of areas, the degree of congestion between the operators is far more than this benchmark.

A. Cellular Mobile Telephone Service :

Cellular Mobile Service Providers (CMSPs) have submitted their POIs Congestion Reports in TRAI for the months of July, August and September 2009.

- We have included only the Service Providers who do not meet the TRAI stipulated POI Congestion benchmark of <0.5% in any of their service areas.
- The POI Congestion Report analysis for the month of July, August and September 2009 shows that the performance of the CMSPs with respect to the congestion on POIs has deteriorated in the month of September 2009 as compared with the performance in June 2009. During the period Cellular Mobile Telephone Subscriber base has increased from 427.29 million in June 2009 to 471.73 million in September 2009. The number of POIs having congestion has increased from 42 in June 2009 to 50 in September 2009 .
- Out of these 50 POIs in September 2009, in 28 POIs, the level of congestion is more than 5% as compared to 27 POIs in June 2009.
- The number of worst affected POIs where the level of congestion is more than 10% is 21 in September 2009, whereas it was 19 in the month of June 2009. Out of these 21 POIs, in 6 POIs the level of congestion is more than 40% whereas it was 3 in the month of June 2009.
- In respect of POIs from Private CMSPs to BSNL/MTNL, the number of POIs having congestion has decreased from 14 in June 2009 to 11 in the month of September 2009.
- During the same period, the number of POIs having congestion among the Private CMSPs has increased from 28 in June 2009 to 39 in September 2009.

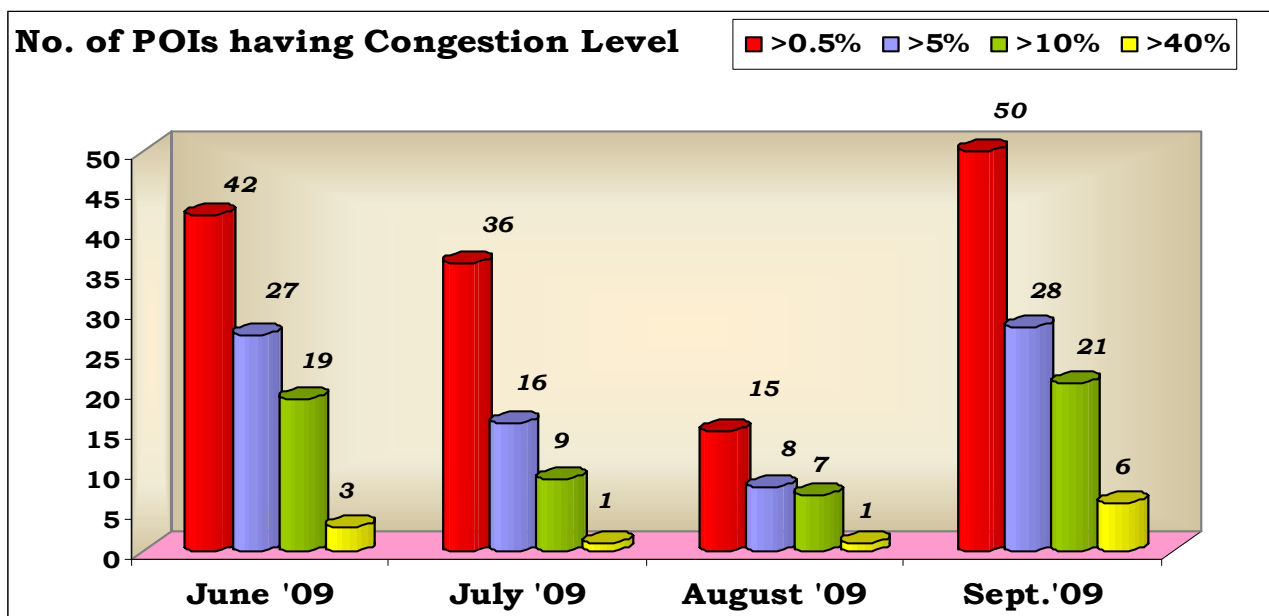
- Amongst the service providers as of September 2009, Dishnet Wireless have congestion in (45 POIs) followed by Bharti Airtel (2 POIs) and BSNL, Tata Teleservices, Aircel (each 1 POIs).
- The Circles/ States more affected due to POI congestion are West Bengal (11 no. of congested PoIs) followed by Kolkata (9 PoIs), Orissa (7 PoIs) and J&K (6 PoIs) .

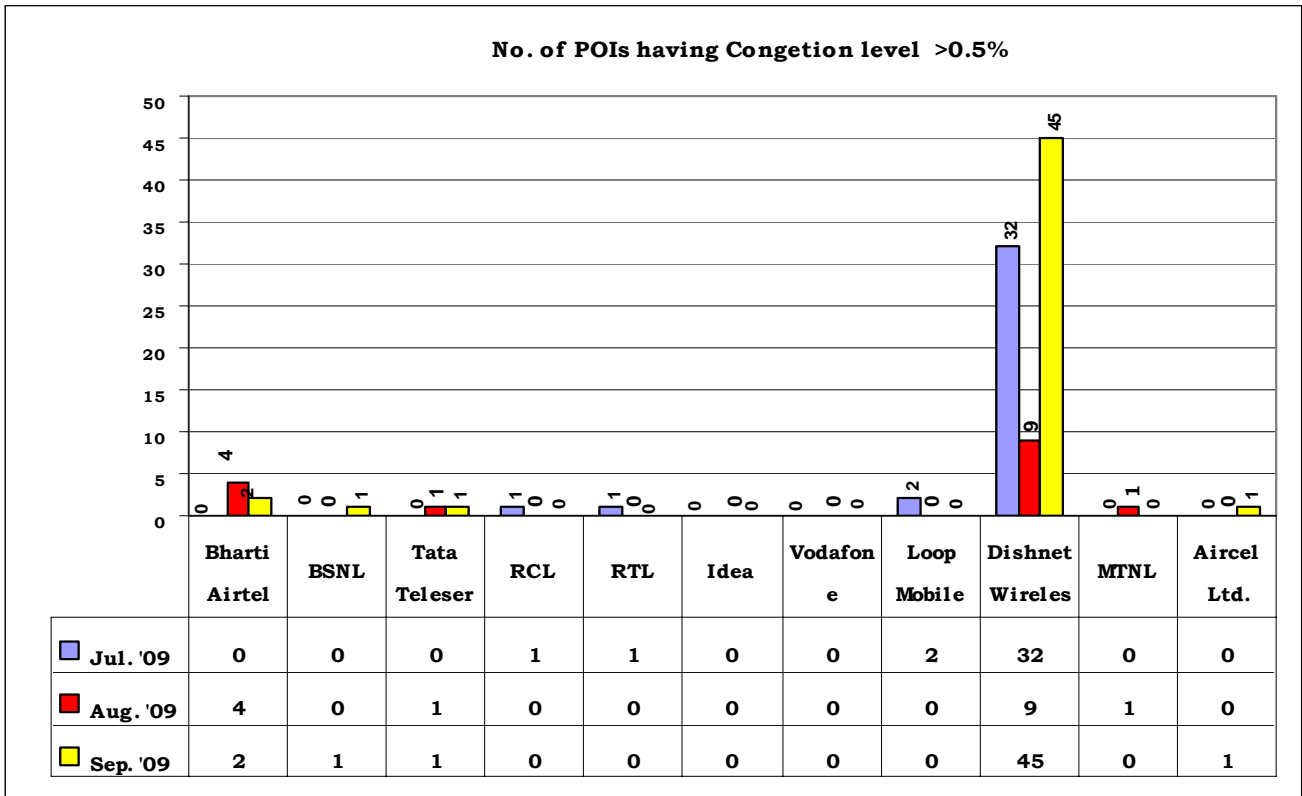
B. Basic Telephone Service (Wireline) :

As per the new Regulations, 2009, Basic Telephone Service (Wireline) Providers have submitted their POIs Congestion Reports in TRAI for the months of July, August and September 2009 for the first time.

- We have included only the Service Providers who do not meet the TRAI stipulated POI Congestion benchmark of <0.5% in any of their service areas.
- The number of POIs having congestion >0.5% is 21 in September 2009, out of these 21 POIs, in 16 POIs, the level of congestion is more than 5%.
- The number of worst affected POIs where the level of congestion is more than 10% is 12 in September 2009, out of these 12 POIs, in 9 POIs the level of congestion is more than 40%.
- In September 2009, the number of POIs having congestion among the Private CMSPs is 21.
- Amongst the service providers as of September 2009, BSNL have congestion in (15 POIs) followed by Bharti Airtel (4 POIs) .
- The Circles/ States more affected due to POI congestion are Delhi (5 no. of congested PoIs) followed by UP-E (4 PoIs) and Andhra Pradesh (3 PoIs).

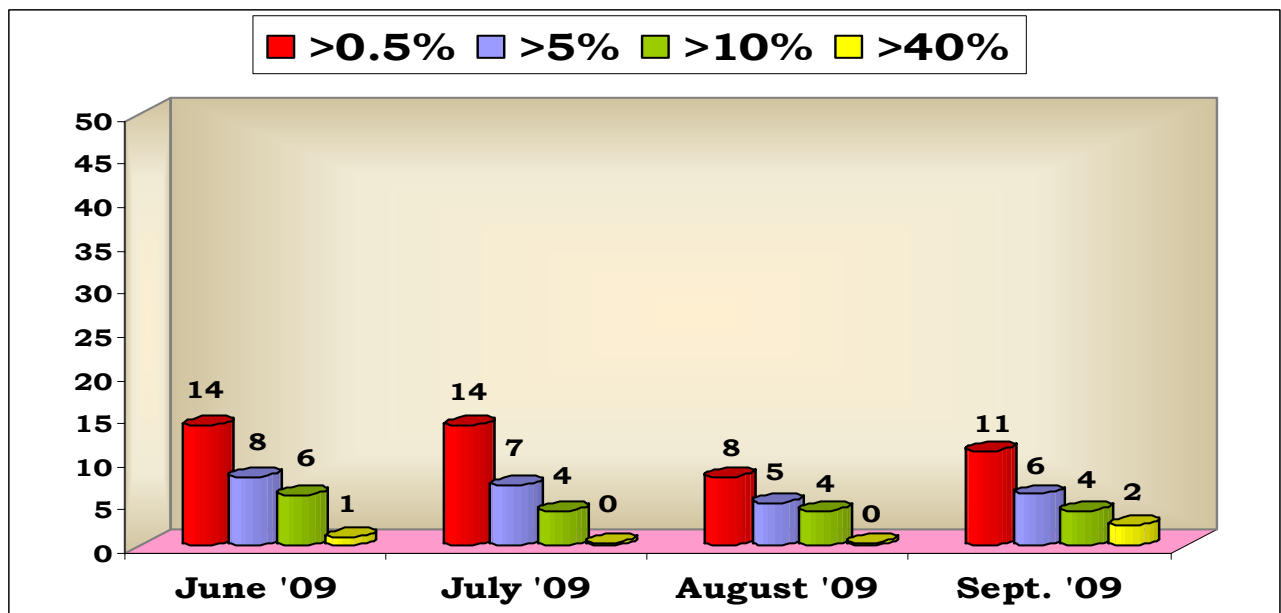
C. (i) The analysis of the degree of congestion in the POIs of Cellular Mobile Telephone Service is given below:-



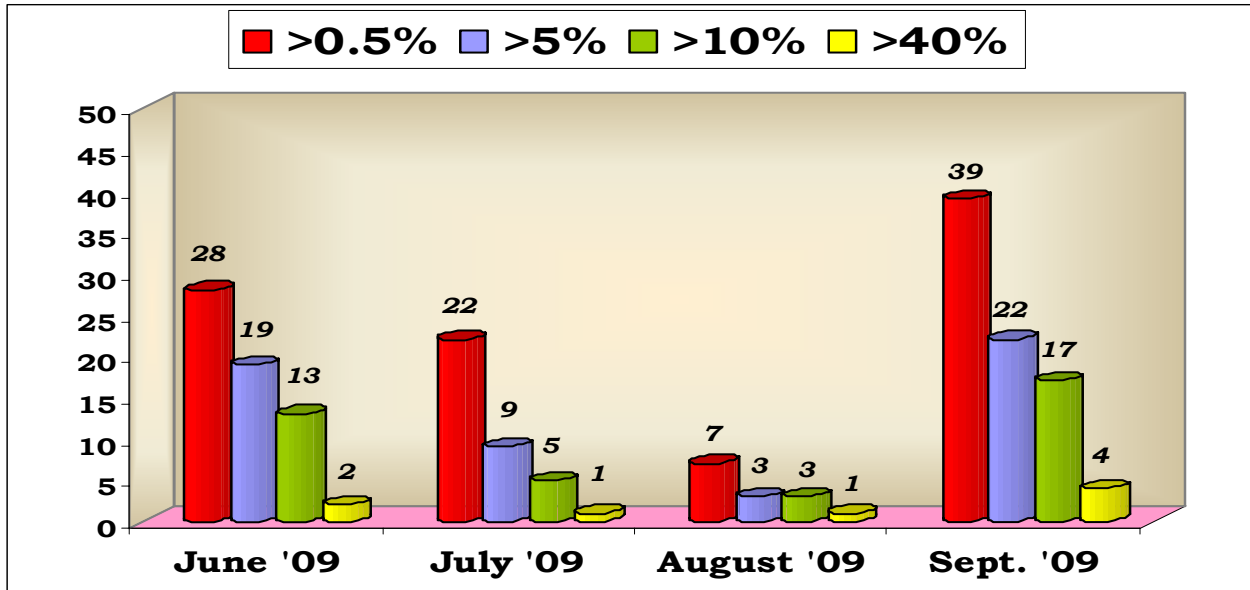


The POI congestion level between Private Service Providers and BSNL, and also among the Private Service Providers is given below in graphs: -

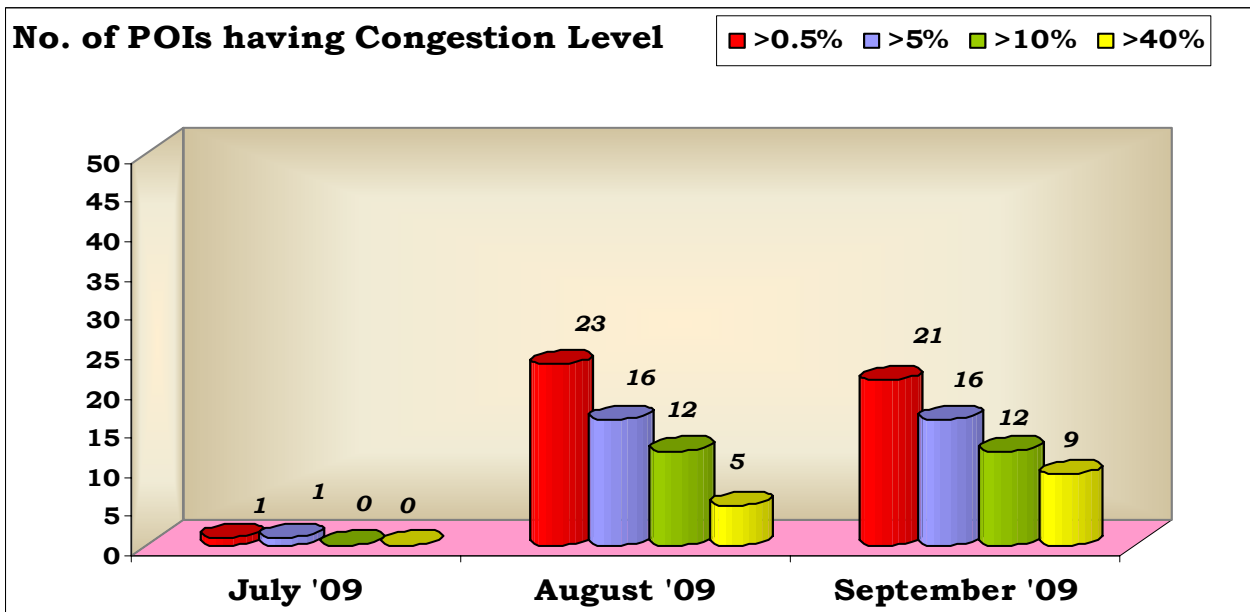
(ii) Number of POIs having congestion level between Private Service Providers and BSNL/MTNL



(iii) Number of POIs having congestion level among the Private Service Providers



D. The analysis of the degree of congestion in the POIs of Basic Telephone Service (Wireline) is given below:-



E. Critical Analysis of Cellular Mobile Telephone Service – Operator wise:

The worst affected POIs where Congestion level on point of interconnections (POIs) is more than 10%, from Private Service Providers to BSNL and Private Service Providers to Private Service Providers for the month of September 2009 :-

POIs between Private Operators and BSNL/MTNL						
Bharti Airtel	Tata Teleservices	Reliance Com/ Reliance Telecom	Idea Cellular	Vodafone	Dishnet Wireless	BSNL
-	-	-	-	-	NE :- Level – 1 Shillong = 45.54% West Bengal:- Level – 2 Malda = 89% J&K :- Cellone Srinagar = 31.06% HP :- Cellone = 12.45%	With Pvt. Opt. MP :- Tata Tele. GSM = 16%

POIs among the Private Operators						
Bharti Airtel	Tata Tele.	Reliance Com/ Reliance Telecom	Idea Cellular	Vodafone	Dishnet Wireless	Aircel
-	-	-	-	-	NE :- Shillong Aircel = 11.93% Shillong VSNL NLD = 46.27% West Bengal:- Aircel NLD, Kolkata (WDN7AN) = 61% Aircel NLD, Kolkata (WDL7NK) = 39% Airtel, WB (WDL7KB) = 63% Airtel, WB (WDL7AT) = 67% Vodafone, WB (WDL7HA) = 24% Vodafone, WB (WDL7HH) = 26% Vodafone, WB (WDL7HW) = 17%	-

					Shyam = 14%	
					Bihar :- Airtel = 20.27%	
					Aircel NLD = 16.51%	
					RIM = 14.9%	
					Tata Tele. = 24.27%	
					Kolkata :- BTSOL NLD = 16.47%	
					RTL Kolkata = 11.95%	

F. Critical Analysis of Basic Telephone (Wireline) – Operator wise:

The worst affected POIs where Congestion level on point of interconnections (POIs) is more than 10%, from Private Service Providers to BSNL and Private Service Providers to Private Service Providers for the month of September 2009 :-

Bharti Airtel	BSNL	MTNL
Delhi :- Aircel Mobility= 51.65% Aircel Local (BND2G0) = 59.43% Aircel Local (BN02G0) = 58.86%	Assam :- RTL = 55.16% Bihar :- Reliance = 76.72% Jharkhand (Ghatkopar) Tax = 39.12% Kerala :- CMTS Tata GSM = 86.36% Karnataka :- Tata UASL (GSM) = 11% UP-E :- Reliance CMTS = 42.37% Reliance Basic = 80.49% Idea Cellular = 58.19% Rajasthan :- Jaipur Bharti = 26.78%	--

The non-provisioning and insufficient provisioning of telecom circuit resource as per traffic requirements leads to:

- inter-network congestion at the Point of Interconnection (POI)
- loss of calls

- repeated call attempts by consumers
- deterioration in Quality of Service (QoS)
- consumer dissatisfaction

Contact Address in case any clarification required:

Advisor (QoS), TRAI
Mahanagar Doorsanchar Bhawan,
Jawahar Lal Nehru Marg (Old Minto Road),
New Delhi - 110002.
Telephone – 011 - 23230404

Authorised for issue

Advisor (QoS)

Comparative POI Congestion level of Cellular Mobile Service Providers

Operators	June, 2009				July, 2009				August, 2009				September, 2009			
	>0.5%	>5%	>10%	>40%	>0.5%	>5.0%	10.0%	40.0%	>0.5%	>5.0%	10.0%	40.0%	>0.5%	>5%	>10%	>40%
Bharti Airtel	2	1	1	0	0	0	0	0	4	1	1	1	2	0	0	0
BSNL	8	8	7	2	0	0	0	0	0	0	0	0	1	1	1	0
Tata Teleservices	0	0	0	0	0	0	0	0	1	1	1	0	1	0	0	0
RCL	1	0	0	0	1	0	0	0	0	0	0	0	0	0	0	0
RTL	1	1	0	0	1	1	1	0	0	0	0	0	0	0	0	0
Idea	1	0	0	0	0	0	0	0	0	0	0	0	0	0	0	0
Vodafone	6	3	3	0	0	0	0	0	0	0	0	0	0	0	0	0
Loop Mobile	0	0	0	0	2	0	0	0	0	0	0	0	0	0	0	0
Dishnet Wireless	20	11	7	1	32	15	8	1	9	5	4	0	45	27	20	6
MTNL	0	0	0	0	0	0	0	0	1	1	1	0	0	0	0	0
Aircel Ltd.	3	3	1	0	0	0	0	0	0	0	0	0	1	0	0	0
Total	42	27	19	3	36	16	9	1	15	8	7	1	50	28	21	6

Analysis - No. of POIs having congestion level License Service Area wise (CMTS)

SL. No.	Circles	June, 2009				July, 2009				August, 2009				September, 2009			
		>0.5%	>5%	>10%	>40%	>0.5%	>5%	>10%	>40%	>0.5%	>5%	>10%	>40%	>0.5%	>5%	>10%	>40%
1	Andhra Pradesh	0	0	0	0	0	0	0	0	1	1	1	0	1	0	0	0
2	Assam	0	0	0	0	0	0	0	0	0	0	0	0	0	0	0	0
3	Bihar	9	5	2	0	5	4	1	0	2	1	1	1	5	4	4	0
4	Chennai	0	0	0	0	0	0	0	0	0	0	0	0	0	0	0	0
5	Delhi	0	0	0	0	4	2	2	0	1	1	1	0	0	0	0	0
6	Gujarat	0	0	0	0	0	0	0	0	0	0	0	0	0	0	0	0
7	Haryana	0	0	0	0	1	0	0	0	0	0	0	0	0	0	0	0
8	Himachal Pradesh	1	0	0	0	1	1	1	0	1	1	1	0	4	2	1	0
9	J & K	4	4	3	0	6	3	2	0	6	2	2	0	6	3	1	0
10	Karnataka	0	0	0	0	1	0	0	0	1	0	0	0	0	0	0	0
11	Kerala	0	0	0	0	0	0	0	0	0	0	0	0	0	0	0	0
12	Kolkata	1	1	1	0	0	0	0	0	0	0	0	0	9	3	2	0
13	Madhya Pradesh	1	1	1	0	0	0	0	0	0	0	0	0	1	1	1	0
14	Maharashtra	4	3	2	1	0	0	0	0	0	0	0	0	0	0	0	0
15	Mumbai	2	1	0	0	7	2	2	1	0	0	0	0	0	0	0	0
16	North East	2	1	1	0	7	3	1	0	2	2	1	0	5	4	3	2
17	Orissa	6	2	2	1	4	1	0	0	0	0	0	0	7	2	0	0
18	Punjab	0	0	0	0	0	0	0	0	0	0	0	0	0	0	0	0
19	Rajasthan	1	1	1	0	0	0	0	0	0	0	0	0	0	0	0	0
20	Tamilnadu	4	4	2	0	0	0	0	0	0	0	0	0	1	0	0	0
21	UP - East	7	4	4	1	0	0	0	0	1	0	0	0	0	0	0	0
22	UP - West	0	0	0	0	0	0	0	0	0	0	0	0	0	0	0	0
23	West Bengal	0	0	0	0	0	0	0	0	0	0	0	0	11	9	9	4
Total		42	27	19	3	36	16	9	1	15	8	7	1	50	28	21	6

Comparative POI Congestion level of Basic Telephone Service Providers

Operators	July, 2009				August, 2009				September, 2009			
	>0.5%	>5.0%	>10.0%	>40.0%	>0.5%	>5.0%	>10.0%	>40.0%	>0.5%	>5%	>10%	>40%
Bharti												
Airtel	0	0	0	0	2	2	0	0	4	3	3	3
BSNL	0	0	0	0	20	13	12	5	15	13	9	6
MTNL	1	1	0	0	1	1	0	0	2	0	0	0
Total	1	1	0	0	23	16	12	5	21	16	12	9

Analysis - No. of POIs having congestion level License Service Area wise (Basic Telephone-Wireline)

SL. No.	Circles	July, 2009				August, 2009				September, 2009			
		>0.5%	>5%	>10%	>40%	>0.5%	>5%	>10%	>40%	>0.5%	>5%	>10%	>40%
1	Andhra Pradesh	0	0	0	0	0	0	0	0	3	3	0	0
2	Assam	0	0	0	0	1	1	1	1	1	1	1	1
3	Bihar	0	0	0	0	0	0	0	0	2	2	2	1
4	Chennai	0	0	0	0	0	0	0	0	0	0	0	0
5	Delhi	1	1	0	0	3	3	0	0	5	3	3	3
6	Gujarat	0	0	0	0	0	0	0	0	0	0	0	0
7	Haryana	0	0	0	0	1	0	0	0	0	0	0	0
8	Himachal Pradesh	0	0	0	0	0	0	0	0	0	0	0	0
9	J & K	0	0	0	0	1	0	0	0	0	0	0	0
10	Karnataka	0	0	0	0	0	0	0	0	2	2	1	0
11	Kerala	0	0	0	0	0	0	0	0	1	1	1	1
12	Kolkata	0	0	0	0	0	0	0	0	0	0	0	0
13	Madhya Pradesh	0	0	0	0	2	2	1	0	0	0	0	0
14	Maharashtra	0	0	0	0	1	0	0	0	1	0	0	0
15	Mumbai	0	0	0	0	0	0	0	0	1	0	0	0
16	North East	0	0	0	0	0	0	0	0	0	0	0	0
17	Orissa	0	0	0	0	2	1	1	0	0	0	0	0
18	Punjab	0	0	0	0	0	0	0	0	0	0	0	0
19	Rajasthan	0	0	0	0	0	0	0	0	1	1	1	0
20	Tamilnadu	0	0	0	0	1	1	1	0	0	0	0	0
21	UP - East	0	0	0	0	3	1	1	1	4	3	3	3
22	UP - West	0	0	0	0	0	0	0	0	0	0	0	0
23	West Bengal	0	0	0	0	8	7	7	3	0	0	0	0
Total		1	1	0	0	23	16	12	5	21	16	12	9

Cellular Mobile Telephone Service

POIs Congestion Report of M/s Bharti Airtel Limited for the month of July, August & September 2009				
Name of Circle and POIs	Benchmark <0.5%			Remarks
	July ,2009	August,2009	September,2009	
Bihar				
Cellone	0.00%	4.15%	0.00%	
POI with Private Operators				
Shyam Telecom	0.00%	44.38%	4.81%	2 E1's addition in progress. Augmentation delayed due to Media unavailability from MTS end
J & K				
POI with Private Operators				
BTSOL NLD	0.00%	0.00%	2.49%	Due to media outages the congestion has shot up. 44 E1s augmentation is in progress. However, the average utilisation is within the prescribed limits.
UP - East				
POI with BSNL Level 1 TAX				
IndraNagar Tax (B)	0.00%	3.03%	0.00%	
Karnataka				
POI with Private Operators				
BTNL	0.00%	0.62%	0.00%	

POIs Congestion Report of M/s Tata Teleservices for the months of July, August & September 2009				
Name of Circle and POIs	Benchmark <0.5%			Remarks
	July ,2009	August,2009	September,2009	
Andhra Pradesh				
POI with BSNL Level 1 TAX				
BSNL (STD/ISD)	0.00%	0.00%	0.96%	Applied for ports for augmentation. Expected to be completed by 30/10/2009
POI with Private Operators				
Reliance NLD	0.00%	27.57%	0.00%	

POIs congestion Report of M/s Reliance Communications Ltd. for the month of July, August & September, 2009				
Name of Circle and POIs	Benchmark <0.5%			Remarks
	July ,2009	August,2009	September,2009	
Haryana				
Cellone, Haryana	2.93%	0.00%	0.00%	

POIs Congestion Report of M/s Reliance Telecom Ltd. for the months of July, August & September,2009				
Name of Circle and POIs	Benchmark <0.5%			Remarks
	July ,2009	August,2009	September,2009	
Bihar				
POI with BSNL Level 2 TAX				
Saharsa	11.80%	0.00%	0.00%	

Cellular Mobile Telephone Service

POI Congestion Report of M/s Dishnet Wireless Ltd. for the month of July, August & September 2009				
Name of Circle and POIs	Benchmark <0.5%			Remarks
	July ,2009	August,2009	September,2009	
Mumbai				
POI with Private Operators				
Airtel	3.32%	0.00%	0.00%	
Airtel Malad				
Airtel Local	0.53%	0.00%	0.00%	
I081G1B_ABS NLD	30.04%	0.00%	0.00%	
I083G1B_ABS ILD	1.33%	0.00%	0.00%	
I08A1G1B_ABS NLD 2	40.45%	0.00%	0.00%	
Karnataka				
POI with Private Operators				
Idea	0.56%	0.00%	0.00%	
North East				
Cellone Shillong	6.50%	8.08%	7.77%	Received the feasibility for augmentation by 5 E1 from Cellone against the application for 29 E1
POI with BSNL Level 1 TAX				
Shillong	4.52%	0.00%	45.54%	Due to total outage of Airtel NLD POI (1856 devices) on 13th , 14th and 29th Sept. '09, the traffic routed through 412 devices of Shillong L1 Tax and hence the congestion occurred
POI with BSNL Level 2 TAX				
Itanagar	3.35%	12.70%	0.00%	
POI with Private Operators				
Airtel Shillong				
Airtel Shillong MSC2	23.16%	0.00%	0.00%	
Airtel Local				
Shilong Airtel NLD	1.31%	0.00%	11.93%	Due to total outage of Airtel NLD POI on 13th , 14th and 29th Sept. '09, the congestion happened
Airtel ILD	0.00%	0.00%	3.79%	Due to total outage of Airtel ILD POI on 13th , 14th and 29th Sept. '09, the congestion happened
RIM Kolkata	4.07%	0.00%	0.00%	
Shillong VSNL NLD	9.77%	0.00%	46.27%	Due to total outage of Airtel NLD POI (1856 devices) on 13th , 14th and 29th Sept. '09, the traffic routed through 493 devices of Shillong VSNL NLD and hence the congestion occurred
West Bengal				
POI with BSNL Level 2 TAX				
Malda	0.00%	0.00%	89.00%	POI Down from BSNL end
POI with Private Operators				
Airtel NLD, Kolkata WDN7AN	0.00%	0.00%	61.00%	once 20 E1s will be augmented from siliguri congestion will be removed
Airtel NLD, Kolkata WDN7NK	0.00%	0.00%	39.00%	
Airtel NLD, Kolkata WSN7NK	0.00%	0.00%	2.00%	20 E1s are progress
Airtel, WB WDL7KB	0.00%	0.00%	63.00%	8 E1 are progress
Airtel, WB WDL7AT	0.00%	0.00%	67.00%	4 E1 are progress
RIM NLD Kolkata	0.00%	0.00%	2.00%	2 E1 are progress
Vodafone WB WDL7HA	0.00%	0.00%	24.00%	4 E1 are demanded
Vodafone WB WDL7HH	0.00%	0.00%	26.00%	4 E1 are demanded
Vodafone WB WDL7HW	0.00%	0.00%	17.00%	3 E1 are demanded
Shyam WB	0.00%	0.00%	14.00%	2 E1 are demanded
Orissa				
POI with BSNL Level 2 TAX				
Balasore	0.00%	0.00%	8.69%	Media Issue
Bhawanipatna	0.00%	0.00%	3.33%	
Angul	0.70%	0.00%	1.03%	
Phulbani	4.17%	0.00%	0.00%	
Rourkela	9.69%	0.00%	0.00%	

Cellular Mobile Telephone Service

POI with Private Operators				
Aircel NLD	0.00%	0.00%	6.26%	8 E1 added
Airtel BHU Local	0.00%	0.00%	2.24%	Media Constraint
BTSOL NLD Sambalpur	0.86%	0.00%	0.00%	
RTL Local	0.00%	0.00%	0.72%	Media Constraint
VSNL NLD	0.00%	0.00%	1.27%	Due to over-flow of congested Aircel NLD
J & K				
Cellone Jammu	11.56%	16.76%	4.21%	Overflow on L1 Tax Jammu, 38 E1
Cellone Srinagar	31.16%	30.66%	31.06%	Overflow on L1 Tax Jammu, 43 E1 demanded on 23/09/2009
POI with BSNL Level 1 TAX				
BSNL NLD	0.53%	0.00%	0.00%	
NLD TG	0.00%	1.08%	0.00%	
POI with Private Operators				
VSNL NLD	0.00%	1.99%	0.00%	
Vodafone Jammu	5.21%	0.00%	0.00%	
Airtel Srinagar	1.75%	1.16%	3.37%	20 E1s are pending from Airtel end
Aircel NLD	2.09%	2.08%	6.82%	Overflow on second Aircel NLD POI and VSNL/BTSOL
Aircel ABS NLD	0.00%	0.00%	5.24%	Overflow on second Aircel ILD POI and VSNL ILD, Media down on 12 and 20 Sep-09.
Bihar				
Cellone Patna	6.90%	0.00%	0.00%	
POI with Private Operators				
Airtel	7.00%	0.00%	20.27%	Follow-ups for additional E1s port is going on
Aircel NLD	5.10%	0.00%	16.51%	Provisioning of E1s is going on , E1s will be added by next 4 days
BTSOL NLD				
RIM	0.80%	0.00%	14.90%	Provisioning of E1s is awaited from RIM end
Tata	0.00%	0.00%	24.27%	Follow-ups for additional E1s port is going on, will be completed by next 4 days
Himachal Pradesh				
Cellone	31.92%	39.85%	12.45%	5 E1 Commissioned at 09/09/2009 and we are in process for augmenting 10 more new E1 on this POI
POI with BSNL Level 1 TAX				
Shimla	0.00%	0.00%	1.19%	We are planning to augment 10 E1 on L1 Tax
POI with Private Operators				
Aircel NLD	0.00%	0.00%	2.96%	We are planning to augment 5 E1 on Aircel NLD
VSNL NLD	0.00%	0.00%	5.28%	POI under monitoring
Delhi				
POI with Private Operators				
BTSOL NLD	11.07%	0.00%	0.00%	
Bharti FXD-Delhi	2.47%	0.00%	0.00%	
Bharti FXD-Ghaziabad	1.56%	0.00%	0.00%	
Aircel NLD	13.20%	0.00%	0.00%	
Kolkata				
POI with Private Operators				
BTSOL NLD	0.00%	0.00%	16.47%	5 E1 Augment
VSNL NLD	0.00%	0.00%	8.55%	5 E1 Augment
Aircel NLD	0.00%	0.00%	1.33%	15 E1 Augment
Airtel Kolkata	0.00%	0.00%	0.76%	10 E1 Augment
Airtel rest of Bengal	0.00%	0.00%	0.72%	5 E1 Augment
RTL Kolkata	0.00%	0.00%	11.95%	5 E1 Augment
TTSL rest of Bengal	0.00%	0.00%	4.87%	Approval pending from TTSL
Vodafone Kolkata	0.00%	0.00%	4.25%	Approval pending from Vodafone
Vodafone rest of Bengal	0.00%	0.00%	2.83%	5 E1 Augment

POI Congestion Report of M/s Loop Mobile for the month of July, August & September, 2009				
Name of Circle and POIs	Benchmark <0.5%			Remarks
	July ,2009	August,2009	September,2009	
Mumbai				
POI with MTNL				
Dolphin Mumbai	2.89%	0.00%	0.00%	
POI with Pri vate Operators				
Idea Mumbai	2.90%	0.00%	0.00%	

Cellular Mobile Telephone Service

POI Congestion Report of M/s MTNL for the month of July, August & September, 2009				
Name of Circle and POIs	Benchmark <0.5%			Remarks
	July ,2009	August,2009	September,2009	
Delhi				
<i>POI with Pri vate Operators</i>				
VSNL	0.00%	10.20%	0.00%	

POI Congestion Report of M/s Aircel Ltd. for the month of July, August & September, 2009				
Name of Circle and POIs	Benchmark <0.5%			Remarks
	July ,2009	August,2009	September,2009	
Tamilnadu				
<i>POI with Pri vate Operators</i>				
Shyam Telecom	0.00%	0.00%	3.64%	Media for augmentation is not provided by the operator. Informed operator to augment urgently

POI Congestion Report of M/s BSNL for the month of July, August & September, 2009				
Name of Circle and POIs	Benchmark <0.5%			Remarks
	July ,2009	August,2009	September,2009	
Madhya Pradesh				
<i>POI with Pri vate Operators</i>				
Tata Teleservices GSM	0.00%	0.00%	16.00%	Demand Note for augmentation of POI given

Basic Telephone Service (Wireline)

POIs Congestion Report of M/s Bharti Airtel Limited for the month of July, August & September 2009				
Name of Circle and POIs	Benchmark <0.5%			Remarks
	July ,2009	August,2009	September,2009	
Delhi				
POI with Private Operators				
Aircel Mobility (Gurgaon)	0.00%	0.00%	51.65%	Pending with Aircel
Aircel Local BND2G0	0.00%	7.50%	59.43%	
Aircel Local BN02G0	0.00%	5.25%	58.86%	
Reliance Local	0.00%	0.00%	0.87%	Pending with RCOM

POI Congestion Report of M/s MTNL for the month of July, August & September, 2009				
Name of Circle and POIs	Benchmark <0.5%			Remarks
	July ,2009	August,2009	September,2009	
Delhi				
POI with Private Operators				
Reliance Mobile	6.50%	6.50%	0.00%	
Bharti (Janpath)	0.00%	0.00%	3.60%	In trunk group of Bharti Airtel the rejection 0.1% and 3.6% (all NFSC) observed is due to faulty equipment (30.5%) at their end. The new MSC connectivity of 35 E1s with Janpath TDM POI is under process
Mumbai				
POI with Private Operators				
MK30	0.00%	0.00%	0.68%	overflow already given via GKP TDM

POI Congestion Report of M/s BSNL for the month of July, August & September, 2009				
Name of Circle and POIs	Benchmark <0.5%			Remarks
	July ,2009	August,2009	September,2009	
Assam				
POI with Private Operators				
Reliance Telecom	0.00%	48.11%	55.16%	Private operators are requested for augmentation and proper handling of BSNL traffic
Andhra Pradesh				
POI with Private Operators				
Reliance GSM	0.00%	0.00%	5.44%	Private operators are requested for augmentation and proper handling of BSNL traffic
ILDO to RCL/UASL	0.00%	0.00%	5.35%	
Rwliance UASL	0.00%	0.00%	6.51%	
Bihar				
POI with Private Operators				
Reliance POI	0.00%	0.00%	76.72%	Private operators are requested for augmentation and proper handling of BSNL traffic
(Jharkhad) Ghatkopar Tax	0.00%	0.00%	39.12%	
Maharashtra				
POI with Private Operators				
Bharti Airtel - ABTS	0.00%	0.00%	3.03%	Private operators are requested for augmentation and proper handling of BSNL traffic
Bharti Airtel Fixed	0.00%	2.94%	0.00%	
Kerala				
POI with Private Operators				
CMTS Tata GSM	0.00%	0.00%	86.36%	Private operators are requested for augmentation and proper handling of BSNL traffic

Basic Telephone Service (Wireline)

Karnataka				
<i>POI with Private Operators</i>				
Tata UASL (GSM)	0.00%	0.00%	11.00%	Private operators are requested for augmentation and proper handling of BSNL traffic
New Delhi Janpath Tax	0.00%	0.00%	9.93%	
J & K				
<i>POI with Private Operators</i>				
Vodafone	0.00%	1.81%	0.00%	
UP-E				
<i>POI with Private Operators</i>				
Reliance CMT	0.00%	66.98%	42.37%	Private operators are requested for augmentation and proper handling of BSNL traffic
Reliance GSM	0.00%	2.63%	0.00%	
Reliance	0.00%	3.36%	3.53%	Private operators are requested for augmentation and proper handling of BSNL traffic
Reliance Basic	0.00%	0.00%	80.49%	
Idea Cellular	0.00%	0.00%	58.19%	
Tamilnadu				
<i>POI with Private Operators</i>				
Tata Teleservices CMSP	0.00%	16.76%	0.00%	
Rajasthan				
<i>POI with Private Operators</i>				
Jaipur Bharti	0.00%	0.00%	26.78%	Private operators are requested for augmentation and proper handling of BSNL traffic
Orissa				
<i>POI with Private Operators</i>				
RTL7	0.00%	2.28%	0.00%	
Reliance Telecom	0.00%	28.82%	0.00%	
Madhya Pradesh				
<i>POI with Private Operators</i>				
Tata GSM	0.00%	12.67%	0.00%	
BTNL	0.00%	6.59%	0.00%	
Haryana				
<i>POI with Private Operators</i>				
Reliance GSM	0.00%	1.77%	0.00%	
West Bengal				
<i>POI with Private Operators</i>				
Vodafone (Hutch)	0.00%	34.28%	0.00%	
Dishnet CMTS	0.00%	22.44%	0.00%	
RTL CMTS	0.00%	1.64%	0.00%	
Airtel GSM	0.00%	34.15%	0.00%	
Reliance CDMA	0.00%	61.03%	0.00%	
Aircel GSM	0.00%	48.71%	0.00%	
Airtel GSM	0.00%	10.14%	0.00%	
Vodafone	0.00%	95.04%	0.00%	