



TELECOM REGULATORY AUTHORITY OF INDIA

Independent Drive Test Report

Kerala LSA

February 2025

Contents

1. Introduction	3
2. Executive Summary (LSA)	3
2.1 Drive test details	3
2.2 Drive test routes	4
2.3 Summary of areas covered	4
2.4 Telecom service providers detected frequency bands	5
2.5 Performance against key QoS parameters	5
3. QoS performance analysis-LSA level	6
3.1 Overview	7
3.2 Voice performance	7
3.3 Data performance	10
4. Detailed QoS performance analysis	12
4.1 Overview	12
4.2 City	12
4.2.1 Drive test route	12
4.2.2 Areas covered	13
4.2.3 Voice performance	13
4.2.4 Data performance	21
4.3 Hotspots	22
4.3.1 Locations	22
4.3.2 Hotspot covered	22
4.3.3 Voice performance	23
4.3.4 Data performance (Auto-selection mode 5G/4G/3G/2G)	26
4.3.5 Data performance (5G Only & 4G Only Download & Upload Speed)	30
4.4 Walk Test	33
4.4.1 Walk test locations	33
4.4.2 Walk Test Covered	33
4.4.3 Voice Performance	33
4.4.4 Data Performance	34
4.5 Coastal	35
4.5.1 Drive test route	35
4.5.2 Routes Covered	35
4.5.3 Voice Performance	35
4.5.4 Data Performance	39

5. Voice & Data Key findings	41
5.1 Overall Voice.....	41
5.2 Overall Data	41
5.3 Operator wise Key Findings.....	42
6. Annexure	46
6.1 Route wise coverage map	46
6.1.1 City	46
6.1.2 Coastal.....	49
7. Appendix	52
7.1 Appendix-I	52
7.1.1 Drive test setup	52
7.1.2 Drive test Methodology	54
7.2 Appendix-II	56
7.2.1 Network Performance Parameters for Voice calls	56
7.2.2 Network Performance Parameters Data tests	57

1. Introduction

TRAI Act, 1997 mandates the Authority to ensure the services delivered through various telecommunications networks meet required quality standards prescribed, to protect the interest of the consumers of telecommunication services. TRAI is also responsible for conducting the periodical audit of such services provided by the service providers so as to protect the interest of the consumers of telecommunications service.

Accordingly, TRAI has engaged M/s RedMango Analytics Pvt. Ltd. to undertake assessment of Quality of Service of mobile service through Independent Drive Test (IDT).

In IDT, the performance of all service providers providing service in a Licensed Service Area (LSA) through various technologies (like 2G/ 3G/ 4G/ 5G) for voice and data are measured by conducting drive test. The drive test routes are finalised based on various objective criteria like reported network performance, consumer complaints etc. Methodology adopted for conducting IDT is elaborated in **APPENDIX-I**.

2. Executive Summary (LSA)

2.1 Drive test details

This report covers the findings of the IDT undertaken in Kerala License Service Area (LSA) during the month of February-2025 under the supervision of TRAI Regional Office (RO) Bengaluru. Details of route / area covered during the IDT is as given below:

Sl. No	Drive test route	Type of route	Distance covered (KMs)	From date	To date
1	Alappuzha	City	309.0	11-Feb-2025	12-Feb-2025
2	Alappuzha	Walk Test	3.7	13-Feb-2025	13-Feb-2025
3	Alappuzha	Hotspot	13 Locations	13-Feb-2025	14-Feb-2025
4	Alappuzha Backwaters	Coastal	11.7	13-Feb-2025	13-Feb-2025

Table-1: Drive test summary

2.2 Drive test routes

The map provides overview of drive test routes indicating city drive, hotspots, walk test and coastal as per the legends shown on the map.

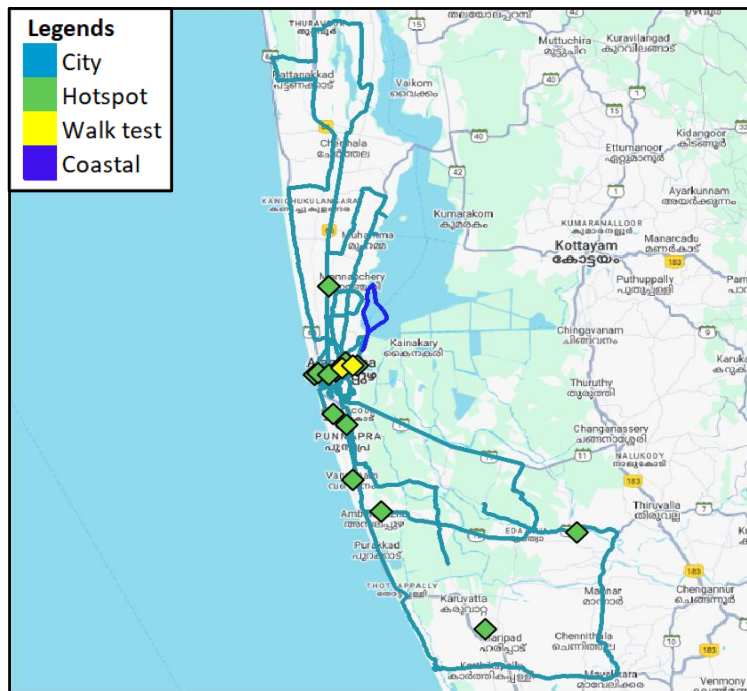


Figure-1: Drive test routes

2.3 Summary of areas covered

a) City-Nearby VCSB Road, Kommady, Muhamma, Thalavady, Pollethai, Pathirappally, Roadmuku, Thampakachuvadu, Vishakapuram, Vattathara, Pattanakkad, Ponnampveli, Mavelikara, Mannar, Karthikapally, Karuvatta, Pallana etc.

b) Hotspot-

1. Alappuzha Beach
2. Alappuzha Lighthouse
3. Alleppey Boat House
4. Ambalapuzha Sree Krishna Temple
5. Chakkulathukavu Temple
6. City Market, Alappuzha
7. College of Engineering And Management Punnapra, Alappuzha
8. District Court, Alappuzha
9. International Coir Museum
10. Mannarasala Sree Nagaraja Temple
11. RTO Office Alappuzha
12. Sree Subramanya Swami Temple
13. TD Medical College, Alappuzha

c) Walk Test

1. Alappuzha Railway Station
2. KSRTC Bus Stand, Alappuzha

d) Coastal

1. Alappuzha Backwaters

2.4 Telecom service providers detected frequency bands

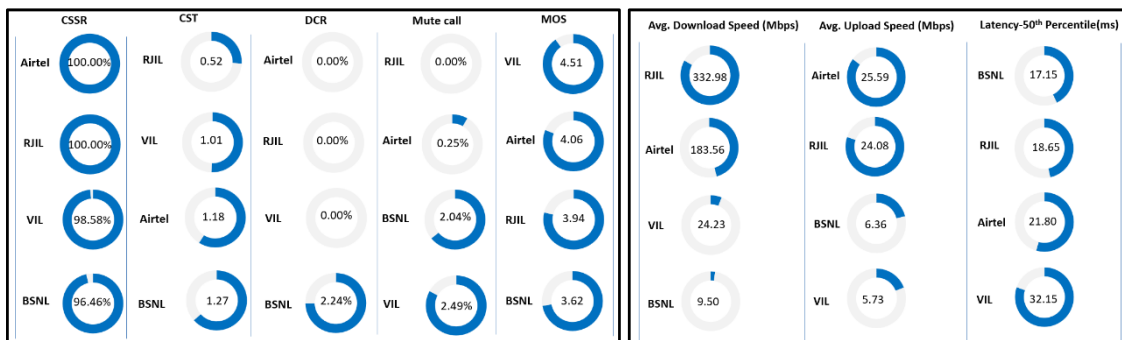
Technologies covered during the IDT and frequency bands in use are summarised in table below:

S.no.	Name of TSP	Technology	Frequency Bands (In MHz)
1	Bharti Airtel Ltd.	2G	1800
2	Bharti Airtel Ltd.	4G	900,1800,2100,2300
3	Bharti Airtel Ltd.	5G	3500
4	BSNL	2G	900
5	BSNL	3G	2100
6	BSNL	4G	700,2100
7	Reliance JIO Infocomm Ltd.	4G	850,1800,2300
8	Reliance JIO Infocomm Ltd.	5G	700,3500
9	Vodafone Idea Ltd.	2G	900
10	Vodafone Idea Ltd.	4G	900,1800,2100,2300,2500

Table-2: Telecom service provider (TSP) covered in IDT

2.5 Performance against key QoS parameters

CSSR: Call Setup Success Rate, CST: Call Setup Time, DCR: Drop Call Rate



Summary-Voice services

Call Setup Success Rate: Airtel, RJIL, VIL & BSNL have 100.00%, 100.00%, 98.58% and 96.46% call setup success rate respectively in Auto-selection mode (5G/4G/3G/2G).

Call Setup Time: BSNL has taken comparatively longer time (1.27 seconds) to establish the voice call, whereas RJIL, VIL and Airtel call setup time is 0.52, 1.01 & 1.18 second respectively in Auto-selection mode (5G/4G/3G/2G).

Drop Call Rate: Overall BSNL's drop call rate (2.24%) is higher (QoS benchmark of 2%), while Airtel, RJIL and VIL have 0.00%, 0.00% and 0.00% drop call rate respectively in Auto-selection mode (5G/4G/3G/2G).

Call Silence/Mute Rate: In packet switched network (4G/5G), RJIL, Airtel, BSNL, and VIL have 0.00%, 0.25%, 2.04% and 2.49% silence call rate respectively.

Mean Opinion Score (MOS): Quality of speech of VIL (4.51) and Airtel (4.06) are having a MOS score >4, whereas RJIL (3.94) and BSNL (3.62) is having a MOS score <4.

Summary-Data services

Data Download performance (Dynamic): BSNL offers a download speed of 9.50 Mbps while VIL provides 24.23 Mbps, being on 4G as top technologies. Airtel and RJIL achieve significantly higher average download speeds of 183.56 Mbps and 332.98 Mbps respectively.

Data Upload performance (Dynamic): VIL offers a upload speed of 5.73 Mbps while BSNL provides 6.36 Mbps, being on 4G as top technologies. RJIL and Airtel offer higher speeds of 24.08 Mbps and 25.59 Mbps respectively.

Data performance - Hotspots (in Mbps):

Airtel- 4G D/L: 52.63 4G U/L: 13.78
 5G D/L: 233.59 5G U/L: 43.28
 BSNL- 4G D/L: 7.76 4G U/L: 7.88
 RJIL- 4G D/L: 34.28 4G U/L: 7.54
 5G D/L: 347.79 5G U/L: 28.62
 VIL- 4G D/L: 27.63 4G U/L: 6.98

Note- "D/L" Download speed, "U/L" Upload speed

QoS Performance Analysis- Kerala LSA

3. QoS performance analysis-LSA level

3.1 Overview

This section provides summary of overall QoS performance of the telecom service provider's network in the LSA by aggregating the results of drive tests conducted in the LSA during the month of February-2025 covering City, Hotspots, Walk test and Coastal. (Refer Table 1)

3.2 Voice performance

(a) Voice Call Performance in 3G/2G network mode only: 3G/2G network mode testing has been done to reflect experience for respective users as they have only 3G/2G compatible handsets.

Parameters	Service Provider		
	3G/2G network mode only		
	AIRTEL	BSNL	VIL
Call Attempts	394	401	395
Call Setup Success Rate %	100.00	98.75	100.00
Drop Call Rate %	0.00	0.25	0.00
Call Setup Time-Average (Second)	4.34	4.33	4.64
Handover Success Rate %	99.30	99.65	99.06

Table-3: Summary of voice call performance in 3G/2G network mode only.

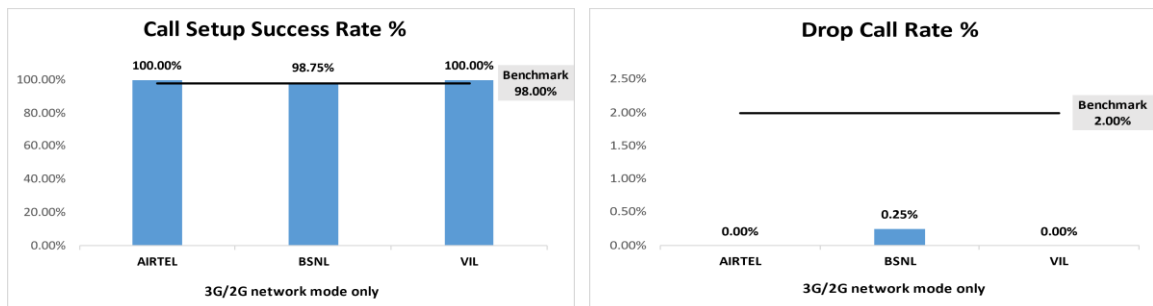


Figure-2: Call setup success rate and drop call rate performance.

Number of unique cell Id's covered in Voice test- Technology wise			
Technology	Service Provider		
	3G/2G network mode only		
	AIRTEL	BSNL	VIL
3G	NA	72	NA
2G	469	236	397

Table-4: Technology wise number of network cell Id's latched during drive test.

Note-

- RJIL does not have 3G/2G network.
- NA- Service provider doesn't provide services in respective technology.

(b) Voice Call Performance in auto network selection mode (5G/4G/3G/2G)

Parameters	Service Provider			
	Auto-selection mode (5G/4G/3G/2G)			
	AIRTEL	BSNL	RJIL	VIL
Call Attempts	627	649	632	633
Call Setup Success Rate %	100.00	96.46	100.00	98.58
Drop Call Rate %	0.00	2.24	0.00	0.00
Call Setup Time-Average (Second)	1.18	1.27	0.52	1.01
Handover Success Rate %	100.00	99.92	99.93	99.88

Table-5: Summary of voice call performance in network auto-selection mode.

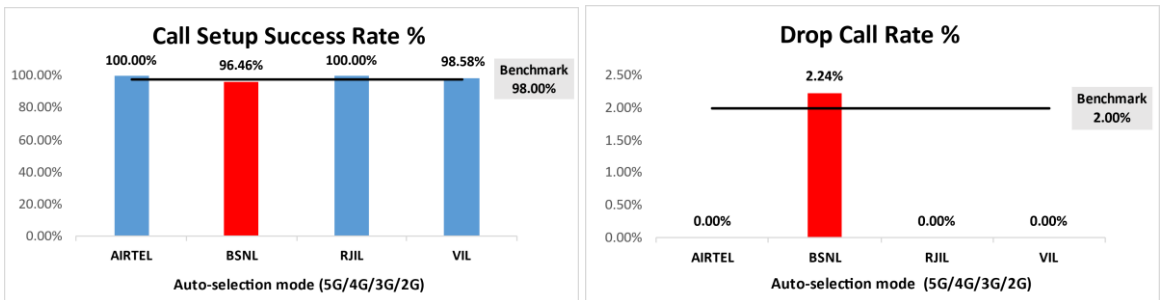


Figure-3: Performance for call setup success rate and drop call rate.

Parameter	Service Provider			
	Mobile-to-Mobile (5G/4G - Open Mode)			
	AIRTEL	BSNL	RJIL	VIL
Call Established (within service provider Network)	403	392	400	402
Number of silence call for >4 Sec	1	8	0	10
Silence Call Rate %	0.25	2.04	0.00	2.49
Number of silence instances for >4 Sec	1	10	0	14
Number of silence instances for >3 Sec	2	13	0	23
Number of silence instances for >2 sec	7	25	3	59
RTP Jitter (4G & 5G) in ms	4.32	13.42	6.40	205.29
Packet loss Rate Downlink %	0.18	3.16	0.20	1.54
Packet loss Rate Uplink %	0.18	2.09	0.30	2.30

Table-6: Summary of silence instances & packet loss rate for mobile to mobile calls.

Number of unique cell Id's covered in Voice test- Technology wise				
Technology	Service Provider			
	Auto Mode (5G/4G/3G/2G)			
	AIRTEL	BSNL	RJIL	VIL
5G	0	NA	483	NA
4G	933	378	789	863
3G	NA	8	NA	NA
2G	0	28	NA	0

Table-7: Technology wise number of network cell Id's latched during drive test.

Note-

- NA- Service provider doesn't provide services in respective technology.
- 0- No cell Id's were found in respective technology.

(c) Mean Opinion Score (MOS) performance for speech quality:

Mean opinion score indicates quality of speech observed during the drive test across different technologies. This parameter has been calculated for mobile-to-mobile calls made within same operator network in auto mode (5G/4G/3G/2G). As per ITU-T Recommendation P.863.1, MOS score values means: 5-Excellent, 4-Good, 3-Fair, 2-Poor, 1-Bad.

Speech Quality (MOS) distribution	Service Provider			
	AIRTEL	BSNL	RJIL	VIL
Total Number of MOS Samples for calls table-6	2387	2143	2379	2317
Speech Quality (Average MOS Score)	4.06	3.62	3.94	4.51
Number of samples with MOS ≥ 4 to < 5 (Excellent)	2132	1160	1856	2079
Number of samples with MOS ≥ 3 to < 4 (Good)	231	600	405	141
Number of samples with MOS ≥ 2 to < 3 (Fair)	12	192	83	44
Number of samples with MOS ≥ 1 to < 2 (Poor)	12	191	35	53
%age of samples with MOS ≥ 4 to < 5 (Excellent)	89.32%	54.13%	78.02%	89.73%
%age of samples with MOS ≥ 3 to < 4 (Good)	9.68%	28.00%	17.02%	6.09%
%age of samples with MOS ≥ 2 to < 3 (Fair)	0.50%	8.96%	3.49%	1.90%
%age of samples with MOS ≥ 1 to < 2 (Poor)	0.50%	8.91%	1.47%	2.29%

Table-8: Summary of speech quality (MOS) samples.

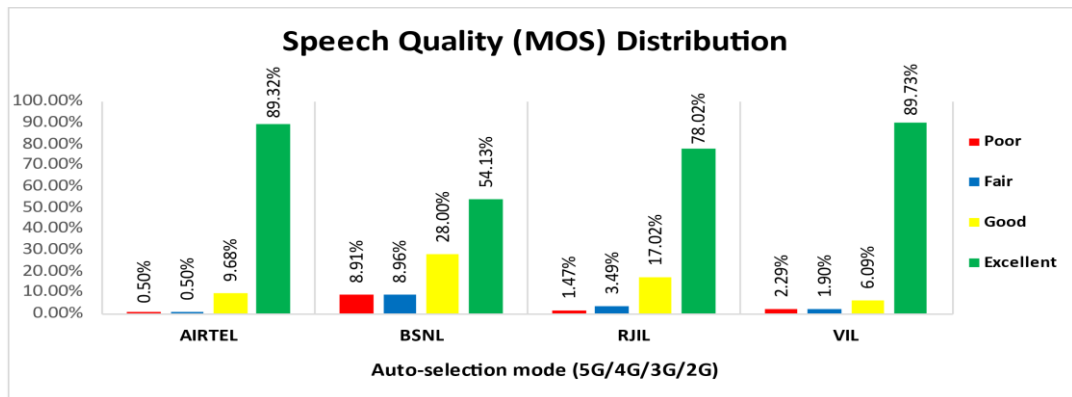


Figure- 4: Distribution of samples in MOS score range.

3.3 Data performance

(a) Data Parameters (Auto-selection mode- 5G/4G/3G/2G)

Parameters		Service Provider			
		Auto-selection mode (5G/4G/3G/2G)			
		AIRTEL	BSNL	RJIL	VIL
Download Throughput (Mbits/s)	Average	183.56	9.50	332.98	24.23
	80th Percentile	289.13	16.57	546.84	37.93
	20th Percentile	48.49	2.06	97.31	10.81
Upload Throughput (Mbits/s)	Average	25.59	6.36	24.08	5.73
	80th Percentile	47.40	10.19	45.11	9.12
	20th Percentile	4.33	1.77	3.80	1.91
Latency (ms)	50th Percentile	21.80	17.15	18.65	32.15

Table-9: Summary of data performance in network auto-selection mode.

Note- Approximately 3.02% of upload sessions in BSNL are experiencing disconnections within 1 second of server connection, resulting in failed uploads. Results of those sessions are not accounted in average, 80th percentile and 20th percentile.

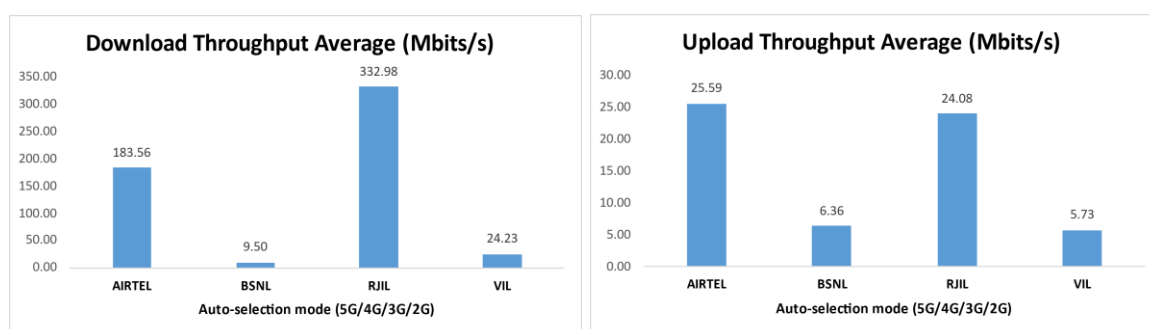


Figure- 5: Download and Upload throughput

Number of unique cell Id's covered in Data test- Technology wise				
Technology	Service Provider			
	Auto-selection mode 5G/4G/3G/2G			
	AIRTEL	BSNL	RJIL	VIL
5G	0	NA	496	NA
4G	750	373	321	775
3G	NA	9	NA	NA
2G	0	5	NA	20

Table-10: Technology wise number of network cell Id's latched during drive test.

Note-

- NA- Service provider doesn't provide services in respective technology.
- 0- No cell Id's were found in respective technology.

Detailed QoS Performance Analysis

4.2.2 Areas covered

Nearby VCSB Road, Kommady, Muhamma, Thalavady, Pollethai, Pathirappally, Roadmuku, Thampakachuvadu, Vishakapuram, Vattathara, Pattanakkad, Ponnampveli, Mavelikara, Mannar, Karthikapally, Karuvatta, Pallana etc.

4.2.3 Voice performance

(a) Voice Call Performance in 3G/2G network mode only: 3G/2G network mode testing has been done to reflect experience for respective users as they have only 3G/2G compatible handsets.

Parameters	Service Provider		
	3G/2G network mode only		
	AIRTEL	BSNL	VIL
Call Attempts	394	401	395
Call Setup Success Rate %	100.00	98.75	100.00
Drop Call Rate %	0.00	0.25	0.00
Call Setup Time-Average (Second)	4.34	4.33	4.64
Handover Success Rate %	99.30	99.65	99.06

Table-11: Summary of voice call performance in 3G/2G network mode only.

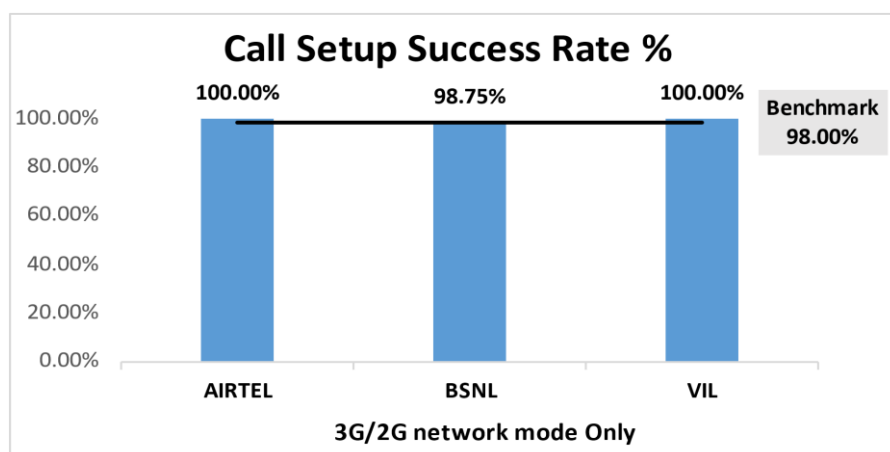


Figure-7: Performance for call setup success rate.

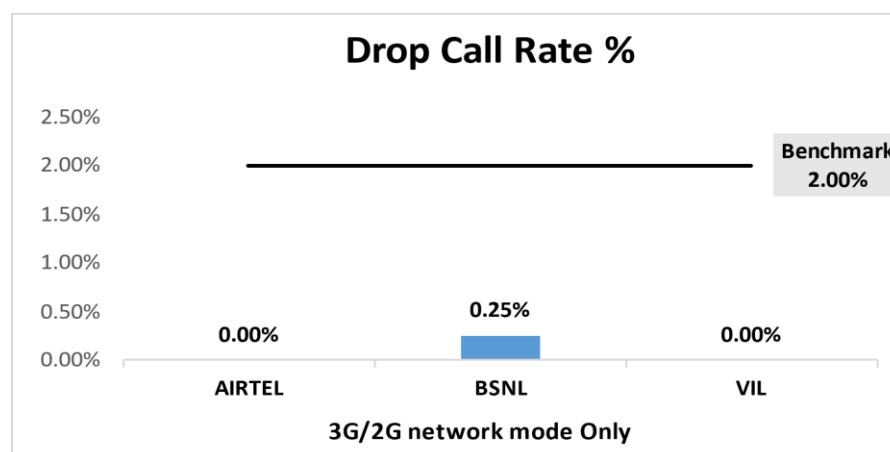


Figure-8: Performance for drop call rate.

(b) Network Technology: This section represent time spent on various network technologies.

Technology	Service Provider		
	AIRTEL	BSNL	VIL
3G	NA	25.97%	NA
2G	100.00%	74.02%	100.00%
Limited Service	0.00%	0.01%	0.00%

Table-12: Time spent on technology during drive test 3G/2G network mode.

Note-

- NA- Service provider doesn't provide services in respective technology.

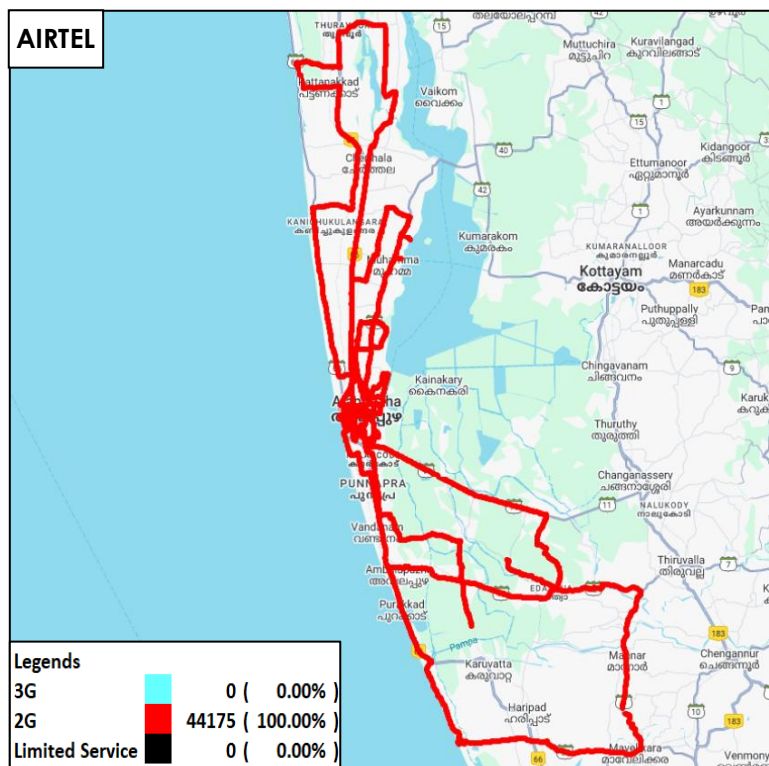


Figure-9: Serving technology plots 3G/2G network mode – AIRTEL.

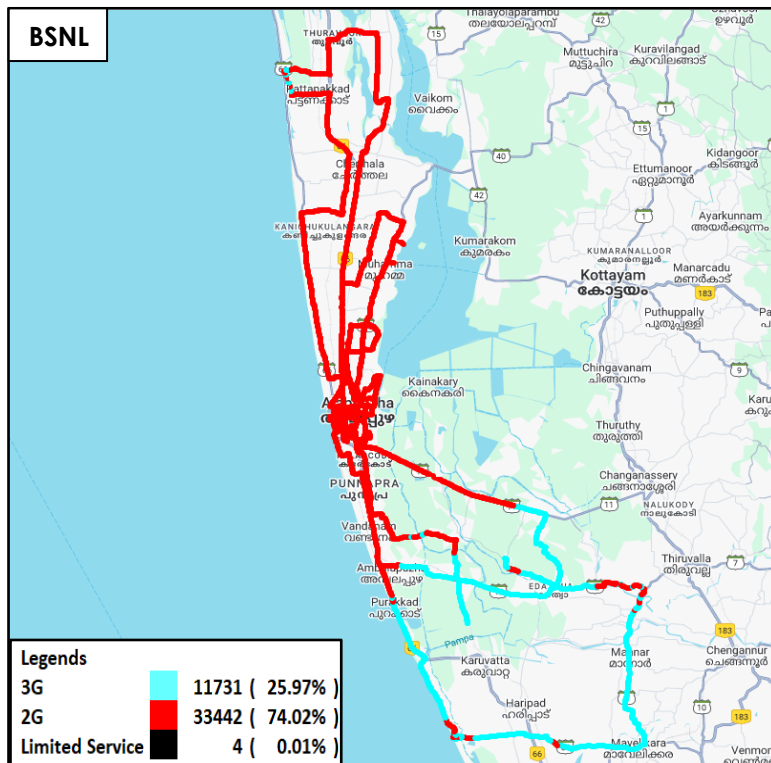


Figure-10: Serving technology plots 3G/2G network mode –BSNL.

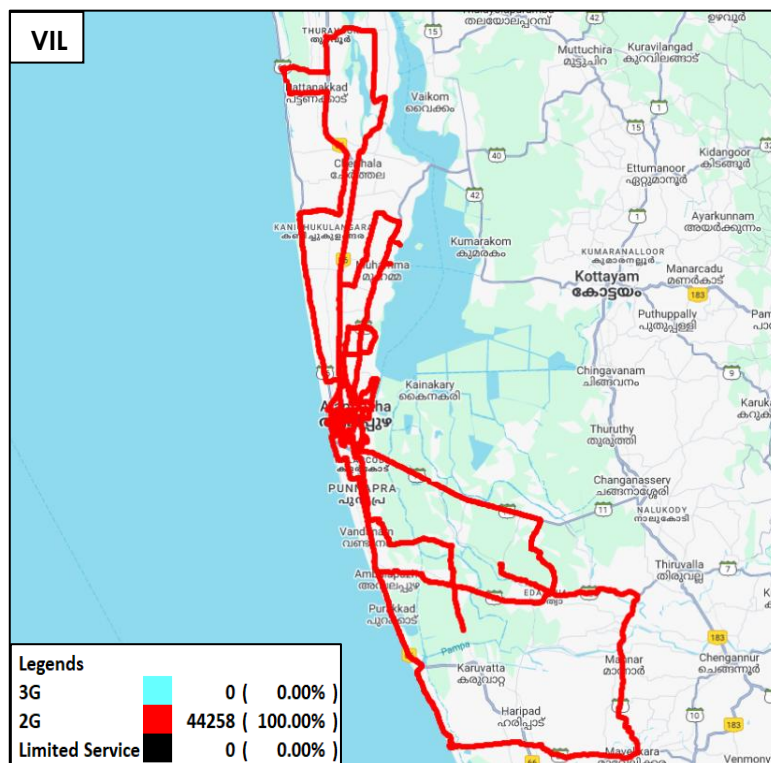


Figure-11: Serving technology plots 3G/2G network mode –VIL.

(c) Network Signal Strength Distribution: The following chart represents signal strength distribution for 3G/2G network mode only. (Refer figure- 35, 36 & 37 for map view)

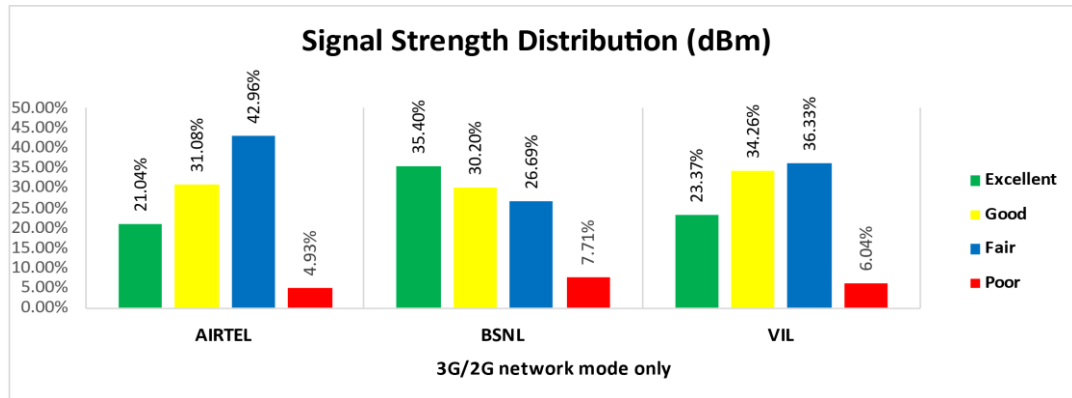


Figure-12: Signal strength distribution 3G/2G network mode only.

Observations:

- Airtel has 21% of samples falling in the excellent signal strength category.
- BSNL has 35% of samples falling in the excellent signal strength category.
- VIL has 23% of samples falling in the excellent signal strength category.

(d) Voice Call Performance in auto network selection mode (5G/4G/3G/2G)

Parameters	Service Provider			
	Auto-selection mode (5G/4G/3G/2G)			
	AIRTEL	BSNL	RJIL	VIL
Call Attempts	415	435	420	418
Call Setup Success Rate %	100.00	94.94	100.00	98.56
Drop Call Rate %	0.00	3.15	0.00	0.00
Call Setup Time Average (Second)	1.17	1.34	0.52	1.16
Handover Success Rate %	100.00	99.90	99.95	99.95

Table-13: Summary of voice call performance in network auto-selection mode.

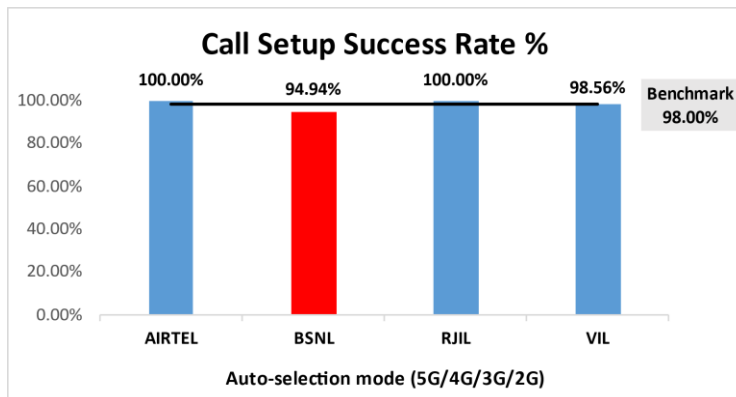


Figure-13: Performance for call setup success rate.

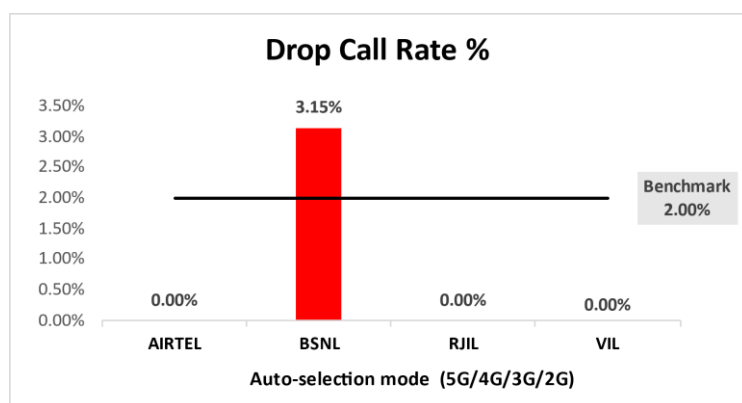


Figure-14: Performance for drop call rate.

Parameter	Service Provider Mobile-to-Mobile (5G/4G - Open Mode)			
	AIRTEL	BSNL	RJIL	VIL
Call Established (within service provider Network)	403	392	400	402
Number of silence call for >4 Sec	1	8	0	10
Silence Call Rate %	0.25	2.04	0.00	2.49
Number of silence instances for >4 Sec	1	10	0	14
Number of silence instances for >3 Sec	2	13	0	23
Number of silence instances for >2 sec	7	25	3	59
RTP Jitter (4G & 5G) in ms	4.32	13.42	6.40	205.29
Packet loss Rate Downlink %	0.18	3.16	0.20	1.54
Packet loss Rate Uplink %	0.18	2.09	0.30	2.30

Table-14: Summary of silence instances & packet loss rate for mobile to mobile call.

(e) Mean Opinion Score (MOS) performance for speech quality:

Mean opinion score indicate quality of speech observed during the drive test across different technologies. This parameter has been calculated for mobile to mobile calls made within same operator network in auto mode (5G/4G/3G/2G). As per ITU-T Recommendation P.863.1, MOS score value means: 5-Excellent, 4-Good, 3-Fair, 2-Poor, 1-Bad.

Speech Quality (MOS) distribution	Service Provider			
	AIRTEL	BSNL	RJIL	VIL
Total Number of MOS Samples for calls in table-16	2387	2143	2379	2317
Speech Quality (Average MOS Score)	4.06	3.62	3.94	4.51
Number of samples with MOS >=4 to <5 (Excellent)	2132	1160	1856	2079
Number of samples with MOS >=3 to <4 (Good)	231	600	405	141
Number of samples with MOS >=2 to <3 (Fair)	12	192	83	44
Number of samples with MOS >=1 to <2 (Poor)	12	191	35	53
%age of samples with MOS >=4 to <5 (Excellent)	89.32%	54.13%	78.02%	89.73%
%age of samples with MOS >=3 to <4 (Good)	9.68%	28.00%	17.02%	6.09%
%age of samples with MOS >=2 to <3 (Fair)	0.50%	8.96%	3.49%	1.90%
%age of samples with MOS >=1 to <2 (Poor)	0.50%	8.91%	1.47%	2.29%

Table-15: Summary of speech quality (MOS) samples.

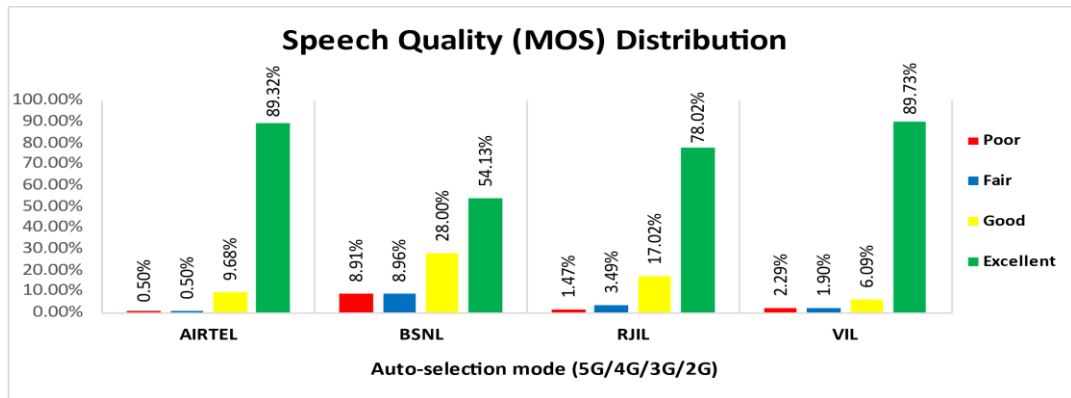


Figure-15: Distribution of samples in MOS score range.

(f) Network Technology: This section represent time spent on various network technologies.

Technology	Service Provider			
	AIRTEL	BSNL	RJIL	VIL
5G	13.37%	NA	20.19%	NA
4G	86.63%	95.74%	79.81%	100.00%
3G	NA	1.06%	NA	NA
2G	0.00%	3.04%	NA	0.00%
Limited Service	0.00%	0.15%	0.00%	0.00%

Table-16: Time spent on technology during drive test.

Note-

- NA- Service provider doesn't provide services in respective technology.

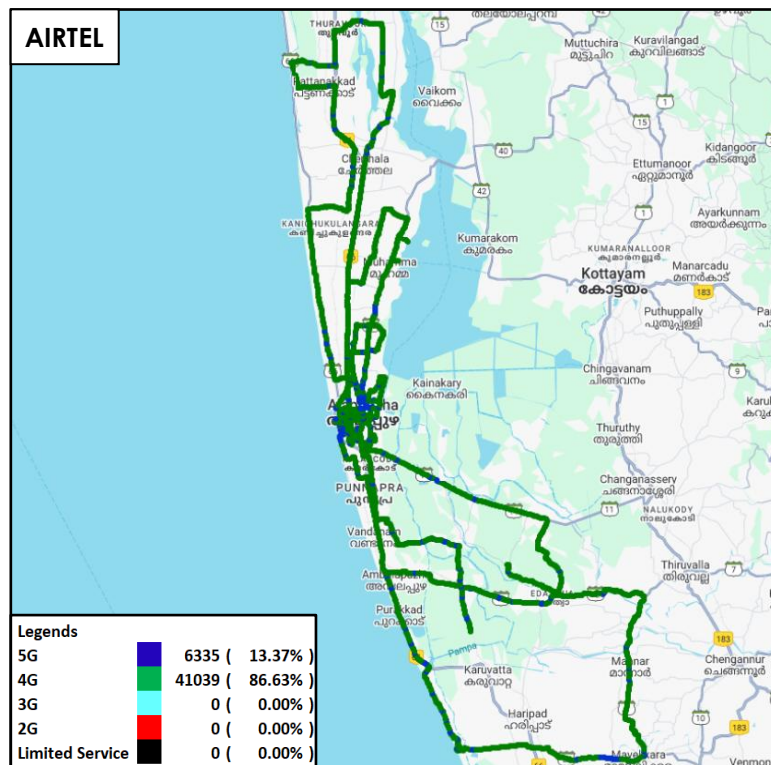


Figure-16: Serving technology plots in auto-selection mode (5G/4G/3G/2G) -AIRTEL.

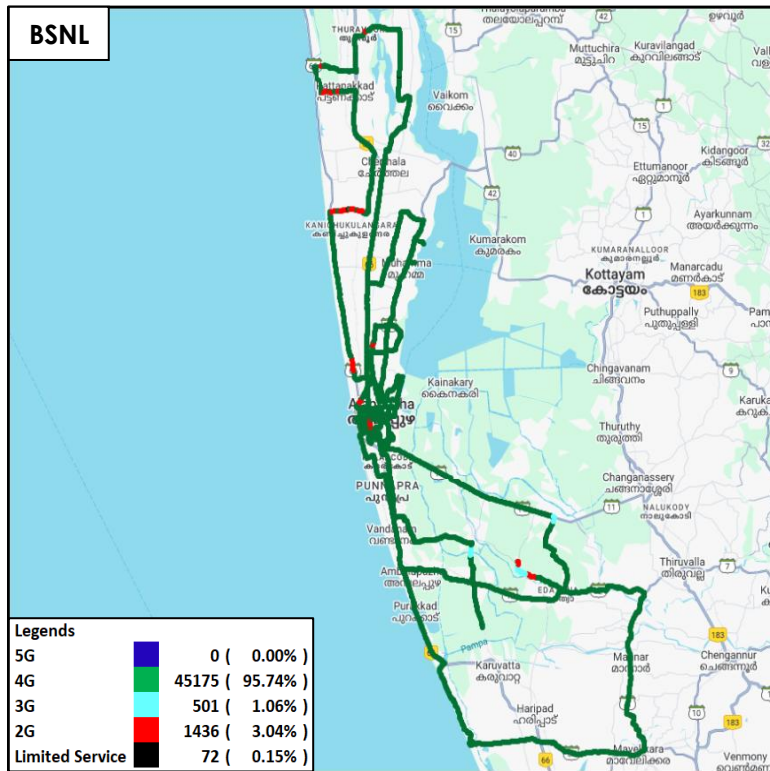


Figure-17: Serving technology plots in auto-selection mode (5G/4G/3G/2G) -BSNL.

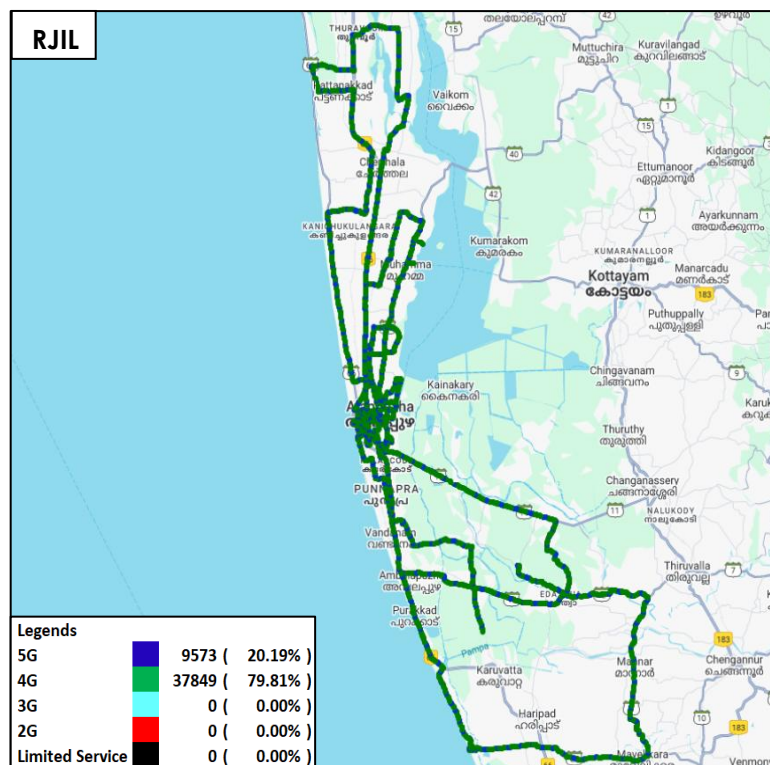


Figure-18: Serving technology plots in auto-selection mode (5G/4G/3G/2G)- RJIL.

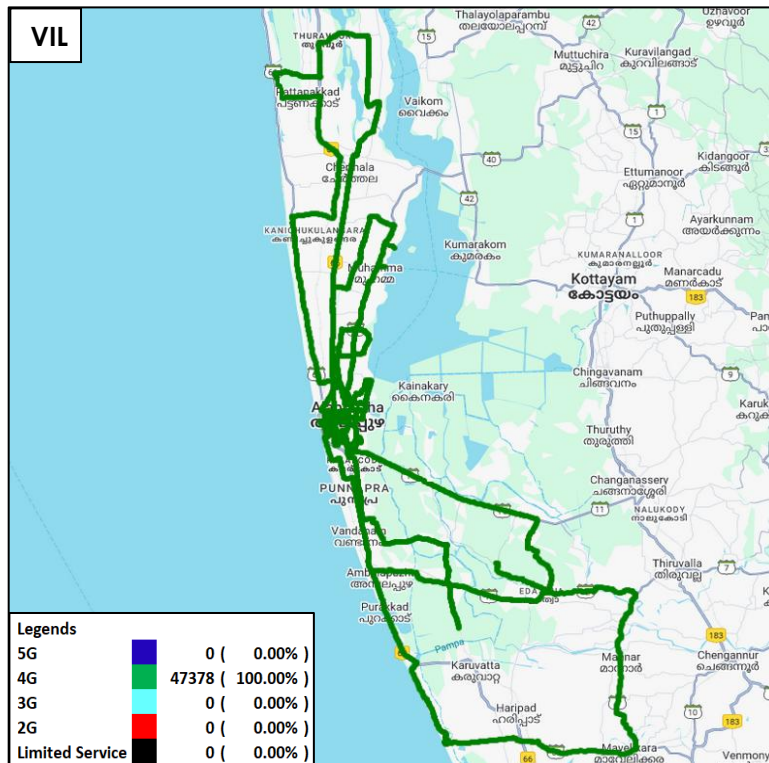


Figure-19: Serving technology plots in auto-selection mode (5G/4G/3G/2G) – VIL.

(g) Network Signal Strength Distribution: The following chart provide signal strength distribution for auto-selection mode (5G/4G/3G/2G). (Refer figure-38, 39, 40 & 41 for map view)

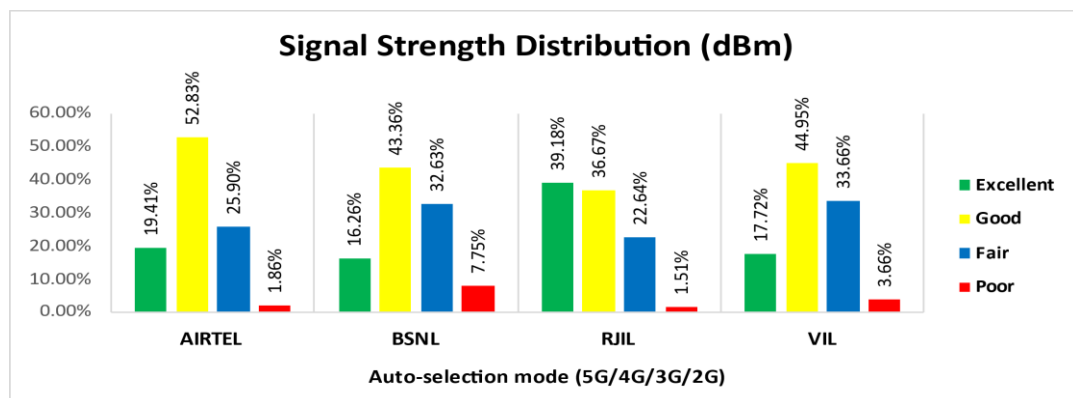


Figure-20: Signal strength distribution auto-selection mode 5G/4G/3G/2G.

Observations:

- Airtel has 19% of samples falling in the excellent signal strength category.
- BSNL has 16% of samples falling in the excellent signal strength category.
- RJIL has 39% of samples falling in the excellent signal strength category.
- VIL has 18% of samples falling in the excellent signal strength category.

4.2.4 Data performance

(a) Data Parameters (Auto-selection mode- 5G/4G/3G/2G)

Parameters		Service Provider			
		Auto-selection mode (5G/4G/3G/2G)			
		AIRTEL	BSNL	RJIL	VIL
Download Throughput (Mbits/s)	Average	171.56	9.51	329.06	23.30
	80th Percentile	272.22	16.72	556.27	36.84
	20th Percentile	40.06	2.23	70.76	10.19
Upload Throughput (Mbits/s)	Average	22.92	5.92	24.02	5.66
	80th Percentile	43.91	9.95	45.11	9.57
	20th Percentile	3.32	1.63	3.46	1.82
Latency (ms)	50th Percentile	24.50	19.00	15.65	31.85

Table-17: Summary of Data performance in network auto-selection mode.

Note- Approximately 0.22% of upload sessions in BSNL are experiencing disconnections within 1 second of server connection, resulting in failed uploads. Results of those sessions are not accounted in average, 80th percentile and 20th percentile.

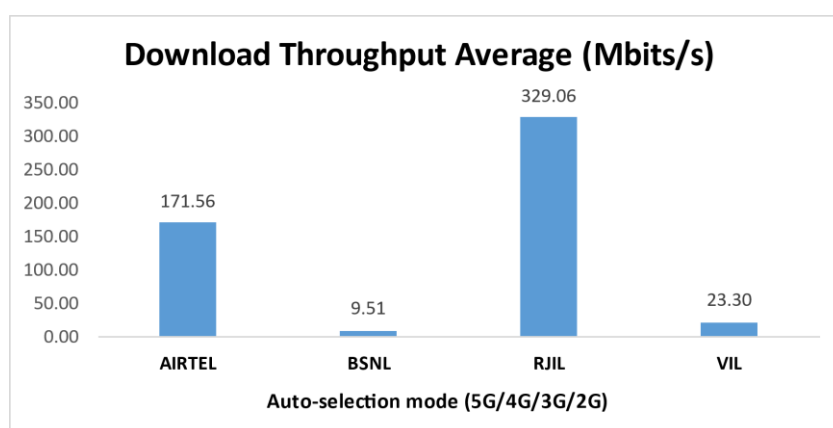


Figure- 21: Download throughput

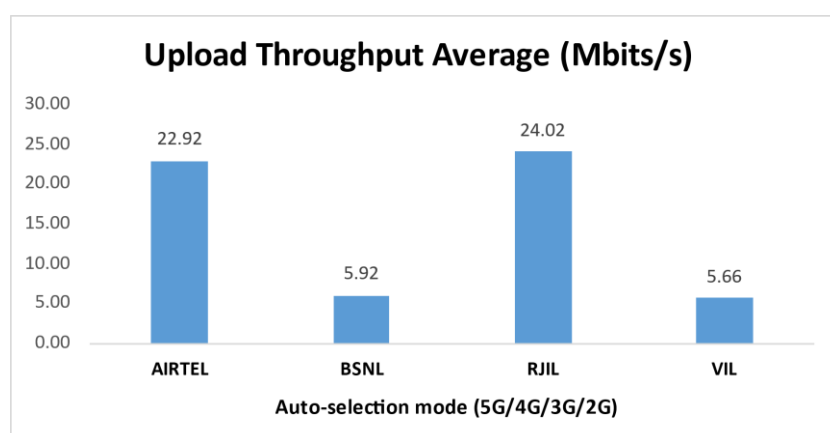


Figure- 22: Upload throughput

4.3 Hotspots

Hotspot testing have been done on 13th February 2025 and 14th February 2025. Thirteen locations have been tested in the city.

4.3.1 Locations

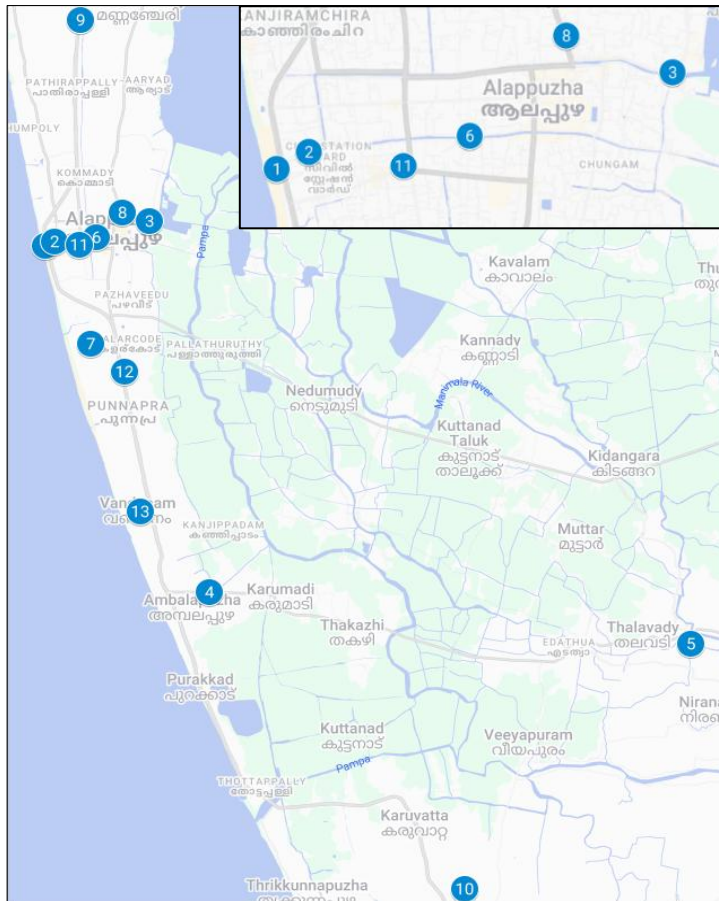


Figure- 23: Hotspot locations

4.3.2 Hotspot covered

1. Alappuzha Beach
2. Alappuzha Lighthouse
3. Alleppey Boat House
4. Ambalapuzha Sree Krishna Temple
5. Chakkulathukavu Temple
6. City Market, Alappuzha
7. College of Engineering And Management Punnapra, Alappuzha
8. District Court, Alappuzha
9. International Coir Museum
10. Mannarasala Sree Nagaraja Temple
11. RTO Office Alappuzha
12. Sree Subramanya Swami Temple
13. TD Medical College, Alappuzha

4.3.3 Voice performance

Overall Voice Performance				
Parameters	Service Provider			
	Auto-selection mode (5G/4G/3G/2G)			
	AIRTEL	BSNL	RJIL	VIL
Call Attempt	130	130	130	130
Call Setup Success Rate %	100.00	99.23	100.00	99.23
Drop Call Rate %	0.00	0.78	0.00	0.00
Call Setup Time-Average (Second)	1.23	1.25	0.50	0.72

Table-18: Overall summary of voice call performance in network auto-selection mode (5G/4G/3G/2G).

Alappuzha Beach				
Parameters	Service Provider			
	Auto-selection mode (5G/4G/3G/2G)			
	AIRTEL	BSNL	RJIL	VIL
Call Attempt	10	10	10	10
Call Setup Success Rate %	100.00	100.00	100.00	100.00
Drop Call Rate %	0.00	0.00	0.00	0.00
Call Setup Time-Average (Second)	1.28	2.21	0.52	0.68

Table-19: Summary of voice call performance in network auto-selection mode (5G/4G/3G/2G).

Alappuzha Lighthouse				
Parameters	Service Provider			
	Auto-selection mode (5G/4G/3G/2G)			
	AIRTEL	BSNL	RJIL	VIL
Call Attempt	10	10	10	10
Call Setup Success Rate %	100.00	100.00	100.00	100.00
Drop Call Rate %	0.00	0.00	0.00	0.00
Call Setup Time-Average (Second)	1.24	0.94	0.57	0.80

Table-20: Summary of voice call performance in network auto-selection mode (5G/4G/3G/2G).

Alleppey Boat House				
Parameters	Service Provider			
	Auto-selection mode (5G/4G/3G/2G)			
	AIRTEL	BSNL	RJIL	VIL
Call Attempt	10	10	10	10
Call Setup Success Rate %	100.00	100.00	100.00	100.00
Drop Call Rate %	0.00	0.00	0.00	0.00
Call Setup Time-Average (Second)	1.19	0.96	0.47	0.66

Table-21: Summary of voice call performance in network auto-selection mode (5G/4G/3G/2G).

Ambalapuzha Sree Krishna Temple				
Parameters	Service Provider			
	Auto-selection mode (5G/4G/3G/2G)			
	AIRTEL	BSNL	RJIL	VIL
Call Attempt	10	10	10	10
Call Setup Success Rate %	100.00	100.00	100.00	100.00
Drop Call Rate %	0.00	0.00	0.00	0.00
Call Setup Time-Average (Second)	1.19	0.93	0.47	0.69

Table-22: Summary of voice call performance in network auto-selection mode (5G/4G/3G/2G).

Chakkulathukavu Temple				
Parameters	Service Provider			
	Auto-selection mode (5G/4G/3G/2G)			
	AIRTEL	BSNL	RJIL	VIL
Call Attempt	10	10	10	10
Call Setup Success Rate %	100.00	100.00	100.00	100.00
Drop Call Rate %	0.00	0.00	0.00	0.00
Call Setup Time-Average (Second)	1.28	0.91	0.50	0.74

Table-23: Summary of voice call performance in network auto-selection mode (5G/4G/3G/2G).

City Market, Alappuzha				
Parameters	Service Provider			
	Auto-selection mode (5G/4G/3G/2G)			
	AIRTEL	BSNL	RJIL	VIL
Call Attempt	10	10	10	10
Call Setup Success Rate %	100.00	100.00	100.00	100.00
Drop Call Rate %	0.00	0.00	0.00	0.00
Call Setup Time-Average (Second)	1.19	0.93	0.49	0.64

Table-24: Summary of voice call performance in network auto-selection mode (5G/4G/3G/2G).

College of Engineering And Management Punnapra, Alappuzha				
Parameters	Service Provider			
	Auto-selection mode (5G/4G/3G/2G)			
	AIRTEL	BSNL	RJIL	VIL
Call Attempt	10	10	10	10
Call Setup Success Rate %	100.00	100.00	100.00	90.00
Drop Call Rate %	0.00	0.00	0.00	0.00
Call Setup Time-Average (Second)	1.12	1.09	0.50	0.78

Table-25: Summary of voice call performance in network auto-selection mode (5G/4G/3G/2G).

District Court, Alappuzha				
Parameters	Service Provider			
	Auto-selection mode (5G/4G/3G/2G)			
	AIRTEL	BSNL	RJIL	VIL
Call Attempt	10	10	10	10
Call Setup Success Rate %	100.00	100.00	100.00	100.00
Drop Call Rate %	0.00	0.00	0.00	0.00
Call Setup Time-Average (Second)	1.25	0.96	0.52	0.62

Table-26: Summary of voice call performance in network auto-selection mode (5G/4G/3G/2G).

International Coir Museum				
Parameters	Service Provider			
	Auto-selection mode (5G/4G/3G/2G)			
	AIRTEL	BSNL	RJIL	VIL
Call Attempt	10	10	10	10
Call Setup Success Rate %	100.00	100.00	100.00	100.00
Drop Call Rate %	0.00	0.00	0.00	0.00
Call Setup Time-Average (Second)	1.42	1.26	0.48	0.68

Table-27: Summary of voice call performance in network auto-selection mode (5G/4G/3G/2G).

Mannarasala Sree Nagaraja Temple				
Parameters	Service Provider			
	Auto-selection mode (5G/4G/3G/2G)			
	AIRTEL	BSNL	RJIL	VIL
Call Attempt	10	10	10	10
Call Setup Success Rate %	100.00	100.00	100.00	100.00
Drop Call Rate %	0.00	0.00	0.00	0.00
Call Setup Time-Average (Second)	1.04	3.23	0.49	0.96

Table-28: Summary of voice call performance in network auto-selection mode (5G/4G/3G/2G).

RTO Office Alappuzha				
Parameters	Service Provider			
	Auto-selection mode (5G/4G/3G/2G)			
	AIRTEL	BSNL	RJIL	VIL
Call Attempt	10	10	10	10
Call Setup Success Rate %	100.00	90.00	100.00	100.00
Drop Call Rate %	0.00	11.11	0.00	0.00
Call Setup Time-Average (Second)	1.28	0.91	0.49	0.80

Table-29: Summary of voice call performance in network auto-selection mode (5G/4G/3G/2G).

Sree Subramanya Swami Temple				
Parameters	Service Provider			
	Auto-selection mode (5G/4G/3G/2G)			
	AIRTEL	BSNL	RJIL	VIL
Call Attempt	10	10	10	10
Call Setup Success Rate %	100.00	100.00	100.00	100.00
Drop Call Rate %	0.00	0.00	0.00	0.00
Call Setup Time-Average (Second)	1.22	0.93	0.49	0.69

Table-30: Summary of voice call performance in network auto-selection mode (5G/4G/3G/2G).

TD Medical College, Alappuzha				
Parameters	Service Provider			
	Auto-selection mode (5G/4G/3G/2G)			
	AIRTEL	BSNL	RJIL	VIL
Call Attempt	10	10	10	10
Call Setup Success Rate %	100.00	100.00	100.00	100.00
Drop Call Rate %	0.00	0.00	0.00	0.00
Call Setup Time-Average (Second)	1.22	0.96	0.53	0.68

Table-31: Summary of voice call performance in network auto-selection mode (5G/4G/3G/2G).

4.3.4 Data performance (Auto-selection mode 5G/4G/3G/2G)

Overall Data Performance				
Parameters	Service Provider			
	Auto-selection mode (5G/4G/3G/2G)			
	AIRTEL	BSNL	RJIL	VIL
Download Throughput Average (Mbits/s)	200.02	10.84	336.54	28.11
Download Throughput 80th Percentile (Mbit/s)	309.46	19.50	526.98	39.96
Download Throughput 20th Percentile (Mbit/s)	63.78	3.23	210.33	12.78
Download Session Setup Success Rate %	100.00	100.00	92.31	100.00
Upload Throughput Average (Mbits/s)	36.19	8.31	27.28	5.93
Upload Throughput 80th Percentile (Mbit/s)	57.02	10.61	48.55	6.98
Upload Throughput 20th Percentile (Mbit/s)	10.10	3.77	5.95	2.68
Upload Session Setup Success Rate %	100.00	100.00	100.00	100.00
Web Browsing Delay (Second)	3.13	3.45	2.83	2.60
Youtube Initial Buffer Delay (Second)	0.69	2.18	0.68	0.91
Latency (ms) - 50th Percentile	19.70	16.55	20.85	32.70
Jitter (ms)	5.56	8.76	6.51	7.89
Packet Loss Rate%	1.00	0.31	0.11	0.91
Packet Loss Rate- 90th percentile	1.72	0.78	0.28	1.26

Table-32: Overall Summary of Data performance in network auto-selection mode (5G/4G/3G/2G).

Alappuzha Beach				
Parameters	Service Provider			
	Auto-selection mode (5G/4G/3G/2G)			
	AIRTEL	BSNL	RJIL	VIL
Download Throughput Average (Mbits/s)	244.47	4.86	42.94	39.63
Download Session Setup Success Rate %	100.00	100.00	100.00	100.00
Upload Throughput Average (Mbits/s)	43.04	2.09	53.00	15.98
Upload Session Setup Success Rate %	100.00	100.00	100.00	100.00
Web Browsing Delay (Second)	2.70	2.84	2.15	2.47
Youtube Initial Buffer Delay (Second)	0.64	2.29	0.49	0.55
Latency (ms)- 50th Percentile	32.93	17.20	25.25	27.60
Jitter (ms)	4.56	15.61	5.69	2.29
Packet Loss Rate%	0.00	0.70	0.10	0.80

Table-33: Summary of Data performance in network auto-selection mode (5G/4G/3G/2G).

Alappuzha Lighthouse				
Parameters	Service Provider			
	Auto-Selection Mode (5G/4G/3G/2G)			
	AIRTEL	BSNL	RJIL	VIL
Download Throughput Average (Mbits/s)	257.37	2.69	249.80	46.15
Download Session Setup Success Rate %	100.00	100.00	100.00	100.00
Upload Throughput Average (Mbits/s)	36.08	3.18	38.04	15.27
Upload Session Setup Success Rate %	100.00	100.00	100.00	100.00
Web Browsing Delay (Second)	3.52	4.66	2.63	2.51
Youtube Initial Buffer Delay (Second)	0.57	2.82	0.99	0.60
Latency (ms) - 50th Percentile	32.70	16.45	18.58	45.45
Jitter (ms)	7.50	8.60	4.71	3.90
Packet Loss Rate%	0.00	0.00	0.00	1.00

Table-34: Summary of Data performance in network auto-selection mode (5G/4G/3G/2G).

Alleppey Boat House				
Parameters	Service Provider			
	Auto-Selection Mode (5G/4G/3G/2G)			
	AIRTEL	BSNL	RJIL	VIL
Download Throughput Average (Mbits/s)	104.45	3.73	570.35	38.56
Download Session Setup Success Rate %	100.00	100.00	100.00	100.00
Upload Throughput Average (Mbits/s)	27.26	5.16	41.08	5.37
Upload Session Setup Success Rate %	100.00	100.00	100.00	100.00
Web Browsing Delay (Second)	3.11	3.10	2.50	2.57
Youtube Initial Buffer Delay (Second)	0.52	2.69	0.54	0.56
Latency (ms) - 50th Percentile	23.53	15.50	23.80	31.80
Jitter (ms)	5.72	8.58	8.02	3.04
Packet Loss Rate%	0.00	0.00	0.00	0.70

Table-35: Summary of Data performance in network auto-selection mode (5G/4G/3G/2G).

Ambalapuzha Sree Krishna Temple				
Parameters	Service Provider			
	Auto-Selection Mode (5G/4G/3G/2G)			
	AIRTEL	BSNL	RJIL	VIL
Download Throughput Average (Mbits/s)	267.60	1.43	488.48	13.98
Download Session Setup Success Rate %	100.00	100.00	80.00	100.00
Upload Throughput Average (Mbits/s)	29.15	4.65	42.56	4.50
Upload Session Setup Success Rate %	100.00	100.00	100.00	100.00
Web Browsing Delay (Second)	3.73	4.79	2.41	2.50
Youtube Initial Buffer Delay (Second)	0.70	5.85	0.49	0.79
Latency (ms) - 50th Percentile	16.10	16.38	20.90	34.05
Jitter (ms)	3.27	14.33	5.18	5.56
Packet Loss Rate%	0.00	0.30	0.00	1.00

Table-36: Summary of Data performance in network auto-selection mode (5G/4G/3G/2G).

Chakkulathukavu Temple				
Parameters	Service Provider			
	Auto-Selection Mode (5G/4G/3G/2G)			
	AIRTEL	BSNL	RJIL	VIL
Download Throughput Average (Mbits/s)	143.91	31.28	220.81	27.42
Download Session Setup Success Rate %	100.00	100.00	100.00	100.00
Upload Throughput Average (Mbits/s)	6.95	21.35	3.55	2.19
Upload Session Setup Success Rate %	100.00	100.00	100.00	100.00
Web Browsing Delay (Second)	4.16	3.09	5.02	2.60
Youtube Initial Buffer Delay (Second)	0.86	0.81	0.56	0.83
Latency (ms) - 50th Percentile	22.40	20.90	17.65	36.35
Jitter (ms)	7.54	2.11	8.57	5.24
Packet Loss Rate%	10.40	0.00	0.10	0.80

Table-37: Summary of Data performance in network auto-selection mode (5G/4G/3G/2G)

City Market, Alappuzha				
Parameters	Service Provider			
	Auto-Selection Mode (5G/4G/3G/2G)			
	AIRTEL	BSNL	RJIL	VIL
Download Throughput Average (Mbits/s)	102.29	6.45	191.51	36.77
Download Session Setup Success Rate %	100.00	100.00	80.00	100.00
Upload Throughput Average (Mbits/s)	11.36	3.04	5.62	4.86
Upload Session Setup Success Rate %	100.00	100.00	100.00	100.00
Web Browsing Delay (Second)	4.35	3.81	2.36	2.46
Youtube Initial Buffer Delay (Second)	0.72	1.24	0.57	0.64
Latency (ms) - 50th Percentile	15.40	23.95	20.93	29.65
Jitter (ms)	2.62	6.65	9.21	3.77
Packet Loss Rate%	0.00	0.80	0.20	0.50

Table-38: Summary of Data performance in network auto-selection mode (5G/4G/3G/2G).

College of Engineering And Management Punnappra, Alappuzha				
Parameters	Service Provider			
	Auto-Selection Mode (5G/4G/3G/2G)			
	AIRTEL	BSNL	RJIL	VIL
Download Throughput Average (Mbits/s)	234.89	12.34	490.30	20.52
Download Session Setup Success Rate %	100.00	100.00	80.00	100.00
Upload Throughput Average (Mbits/s)	26.38	8.19	17.20	2.93
Upload Session Setup Success Rate %	100.00	100.00	100.00	100.00
Web Browsing Delay (Second)	2.71	2.58	3.07	2.57
Youtube Initial Buffer Delay (Second)	0.61	0.77	0.48	2.03
Latency (ms) - 50th Percentile	16.10	13.25	17.98	34.03
Jitter (ms)	2.63	11.73	4.18	4.63
Packet Loss Rate%	0.00	0.40	0.00	0.80

Table-39: Summary of Data performance in network auto-selection mode (5G/4G/3G/2G).

District Court, Alappuzha				
Parameters	Service Provider			
	Auto-Selection Mode (5G/4G/3G/2G)			
	AIRTEL	BSNL	RJIL	VIL
Download Throughput Average (Mbits/s)	111.34	7.71	560.83	13.40
Download Session Setup Success Rate%	100.00	100.00	100.00	100.00
Upload Throughput Average (Mbits/s)	52.23	13.97	65.84	1.67
Upload Session Setup Success Rate %	100.00	100.00	100.00	100.00
Web Browsing Delay (Second)	2.96	2.71	2.47	2.81
Youtube Initial Buffer Delay (Second)	0.54	0.98	0.51	1.16
Latency (ms)- 50th Percentile	33.70	15.10	24.50	30.65
Jitter (ms)	4.04	9.05	2.95	18.57
Packet Loss Rate%	0.00	0.00	0.10	2.60

Table-40: Summary of Data performance in network auto-selection mode (5G/4G/3G/2G).

International Coir Museum				
Parameters	Service Provider			
	Auto-Selection Mode (5G/4G/3G/2G)			
	AIRTEL	BSNL	RJIL	VIL
Download Throughput Average (Mbits/s)	346.69	30.09	255.49	32.90
Download Session Setup Success Rate%	100.00	100.00	80.00	100.00
Upload Throughput Average (Mbits/s)	39.92	18.60	11.67	7.09
Upload Session Setup Success Rate %	100.00	100.00	100.00	100.00
Web Browsing Delay (Second)	2.13	3.38	2.36	2.57
Youtube Initial Buffer Delay (Second)	0.76	1.31	0.71	0.72
Latency (ms)- 50th Percentile	16.70	22.40	17.65	31.95
Jitter (ms)	7.99	2.62	4.26	3.96
Packet Loss Rate%	2.00	0.30	0.30	0.40

Table-41: Summary of Data performance in network auto-selection mode (5G/4G/3G/2G).

Mannarasala Sree Nagaraja Temple				
Parameters	Service Provider			
	Auto-Selection Mode (5G/4G/3G/2G)			
	AIRTEL	BSNL	RJIL	VIL
Download Throughput Average (Mbits/s)	58.49	22.20	214.82	9.66
Download Session Setup Success Rate%	100.00	100.00	100.00	100.00
Upload Throughput Average (Mbits/s)	4.51	7.40	2.55	4.22
Upload Session Setup Success Rate %	100.00	100.00	100.00	100.00
Web Browsing Delay (Second)	3.06	3.12	4.13	2.74
Youtube Initial Buffer Delay (Second)	1.30	0.75	4.84	1.17
Latency (ms)- 50th Percentile	25.70	23.75	19.60	28.25
Jitter (ms)	14.89	3.08	7.92	34.15
Packet Loss Rate%	0.60	0.00	0.00	1.30

Table-42: Summary of Data performance in network auto-selection mode (5G/4G/3G/2G).

RTO Office Alappuzha				
Parameters	Service Provider			
	Auto-Selection Mode (5G/4G/3G/2G)			
	AIRTEL	BSNL	RJIL	VIL
Download Throughput Average (Mbits/s)	500.15	8.33	509.01	11.37
Download Session Setup Success Rate%	100.00	100.00	100.00	100.00
Upload Throughput Average (Mbits/s)	65.71	8.13	52.68	2.61
Upload Session Setup Success Rate %	100.00	100.00	100.00	100.00
Web Browsing Delay (Second)	2.56	2.86	2.30	2.72
Youtube Initial Buffer Delay (Second)	0.66	1.24	0.53	1.05
Latency (ms)- 50th Percentile	20.05	15.40	26.80	31.65
Jitter (ms)	3.59	7.57	4.33	4.81
Packet Loss Rate%	0.00	0.10	0.00	0.40

Table-43: Summary of Data performance in network auto-selection mode (5G/4G/3G/2G).

Sree Subramanya Swami Temple				
Parameters	Service Provider			
	Auto-Selection Mode (5G/4G/3G/2G)			
	AIRTEL	BSNL	RJIL	VIL
Download Throughput Average (Mbits/s)	147.88	4.67	388.19	59.66
Download Session Setup Success Rate%	100.00	100.00	80.00	100.00
Upload Throughput Average (Mbits/s)	63.14	7.20	11.97	5.69
Upload Session Setup Success Rate %	100.00	100.00	100.00	100.00
Web Browsing Delay (Second)	2.75	4.31	2.92	2.52
Youtube Initial Buffer Delay (Second)	0.64	1.46	0.50	0.81
Latency (ms)- 50th Percentile	18.08	13.30	21.33	35.20
Jitter (ms)	4.82	11.65	4.18	5.00
Packet Loss Rate%	0.00	0.40	0.00	0.40

Table-44: Summary of Data performance in network auto-selection mode (5G/4G/3G/2G).

TD Medical College, Alappuzha				
Parameters	Service Provider			
	Auto-Selection Mode (5G/4G/3G/2G)			
	AIRTEL	BSNL	RJIL	VIL
Download Throughput Average (Mbits/s)	80.69	5.18	218.73	15.34
Download Session Setup Success Rate%	100.00	100.00	100.00	100.00
Upload Throughput Average (Mbits/s)	64.80	5.12	8.90	4.71
Upload Session Setup Success Rate %	100.00	100.00	100.00	100.00
Web Browsing Delay (Second)	3.00	3.68	2.62	2.79
Youtube Initial Buffer Delay (Second)	0.60	6.22	0.86	0.90
Latency (ms)- 50th Percentile	18.45	13.55	22.00	35.70
Jitter (ms)	3.16	12.30	15.40	7.71
Packet Loss Rate%	0.00	1.00	0.60	1.10

Table-45: Summary of Data performance in network auto-selection mode (5G/4G/3G/2G).

4.3.5 Data performance (5G Only & 4G Only Download & Upload Speed)

Overall Data Performance					
Parameters		Service Provider			
		AIRTEL	BSNL	RJIL	VIL
5G	Download Throughput Average (Mbits/s)	233.59	-	347.79	-
	Upload Throughput Average (Mbits/s)	43.28	-	28.62	-
4G	Download Throughput Average (Mbits/s)	52.63	7.76	34.28	27.63
	Upload Throughput Average (Mbits/s)	13.78	7.88	7.54	6.98

Table-46: Overall Summary of 5G only & 4G only data download & upload speed.

Note- “-”Respective technology was not observed during the test.

Alappuzha Beach					
Parameters		Service Provider			
		AIRTEL	BSNL	RJIL	VIL
5G	Download Throughput Average (Mbits/s)	244.47	-	42.94	-
	Upload Throughput Average (Mbits/s)	43.04	-	53.00	-
4G	Download Throughput Average (Mbits/s)	54.75	3.00	13.96	38.83
	Upload Throughput Average (Mbits/s)	10.91	2.54	3.29	15.69

Table-47: Overall Summary of data download & upload speed 5G only & 4G only.

Note- “-”Respective technology was not observed during the test.

Alappuzha Lighthouse					
Parameters		Service Provider			
		AIRTEL	BSNL	RJIL	VIL
5G	Download Throughput Average (Mbits/s)	257.37	-	249.80	-
	Upload Throughput Average (Mbits/s)	36.08	-	38.04	-
4G	Download Throughput Average (Mbits/s)	26.85	2.83	27.53	37.96
	Upload Throughput Average (Mbits/s)	4.44	3.68	3.08	13.44

Table-48: Overall Summary of data download & upload speed 5G only & 4G only.

Note- “-”Respective technology was not observed during the test.

Alleppey Boat House					
Parameters		Service Provider			
		AIRTEL	BSNL	RJIL	VIL
5G	Download Throughput Average (Mbits/s)	107.17	-	570.35	-
	Upload Throughput Average (Mbits/s)	27.26	-	41.08	-
4G	Download Throughput Average (Mbits/s)	75.35	4.01	18.63	43.01
	Upload Throughput Average (Mbits/s)	16.73	6.00	8.41	4.36

Table-49: Overall Summary of data download & upload speed 5G only & 4G only.

Note- “-”Respective technology was not observed during the test.

Ambalapuzha Sree Krishna Temple					
Parameters		Service Provider			
		AIRTEL	BSNL	RJIL	VIL
5G	Download Throughput Average (Mbits/s)	406.29	-	488.48	-
	Upload Throughput Average (Mbits/s)	41.00	-	42.56	-
4G	Download Throughput Average (Mbits/s)	73.40	3.03	28.47	13.59
	Upload Throughput Average (Mbits/s)	27.65	5.00	20.48	4.23

Table-50: Overall Summary of data download & upload speed 5G only & 4G only.

Note- "-"Respective technology was not observed during the test.

Chakkulathukavu Temple					
Parameters		Service Provider			
		AIRTEL	BSNL	RJIL	VIL
5G	Download Throughput Average (Mbits/s)	296.29	-	361.14	-
	Upload Throughput Average (Mbits/s)	5.94	-	5.92	-
4G	Download Throughput Average (Mbits/s)	153.27	17.74	5.79	31.71
	Upload Throughput Average (Mbits/s)	31.89	8.84	1.37	2.25

Table-51: Overall Summary of data download & upload speed 5G only & 4G only.

Note- "-"Respective technology was not observed during the test.

City Market, Alappuzha					
Parameters		Service Provider			
		AIRTEL	BSNL	RJIL	VIL
5G	Download Throughput Average (Mbits/s)	338.37	-	191.51	-
	Upload Throughput Average (Mbits/s)	-	-	5.62	-
4G	Download Throughput Average (Mbits/s)	64.92	3.75	24.79	21.92
	Upload Throughput Average (Mbits/s)	22.17	6.99	3.66	15.79

Table-52: Overall Summary of data download & upload speed 5G only & 4G only.

Note- "-"Respective technology was not observed during the test.

College of Engineering And Management Punnappra, Alappuzha					
Parameters		Service Provider			
		AIRTEL	BSNL	RJIL	VIL
5G	Download Throughput Average (Mbits/s)	285.92	-	490.30	-
	Upload Throughput Average (Mbits/s)	31.93	-	17.20	-
4G	Download Throughput Average (Mbits/s)	42.26	11.99	21.30	23.08
	Upload Throughput Average (Mbits/s)	9.51	14.33	4.57	8.21

Table-53: Overall Summary of data download & upload speed 5G only & 4G only.

Note- "-"Respective technology was not observed during the test.

District Court, Alappuzha					
Parameters		Service Provider			
		AIRTEL	BSNL	RJIL	VIL
5G	Download Throughput Average (Mbits/s)	111.34	-	560.83	-
	Upload Throughput Average (Mbits/s)	52.23	-	65.84	-
4G	Download Throughput Average (Mbits/s)	32.07	8.86	102.22	10.92
	Upload Throughput Average (Mbits/s)	10.21	13.84	18.99	4.14

Table-54: Overall Summary of data download & upload speed 5G only & 4G only.

Note- "-"Respective technology was not observed during the test.

International Coir Museum					
Parameters		Service Provider			
		AIRTEL	BSNL	RJIL	VIL
5G	Download Throughput Average (Mbits/s)	346.69	-	255.49	-
	Upload Throughput Average (Mbits/s)	39.92	-	9.13	-
4G	Download Throughput Average (Mbits/s)	95.42	11.67	80.42	40.07
	Upload Throughput Average (Mbits/s)	13.84	13.93	9.27	5.39

Table-55: Overall Summary of data download & upload speed 5G only & 4G only.

Note- “-”Respective technology was not observed during the test.					
Mannarasala Sree Nagaraja Temple					
Parameters		Service Provider			
		AIRTEL	BSNL	RJIL	VIL
5G	Download Throughput Average (Mbits/s)	79.80	-	214.82	-
	Upload Throughput Average (Mbits/s)	4.04	-	2.55	-
4G	Download Throughput Average (Mbits/s)	11.77	14.81	15.28	13.38
	Upload Throughput Average (Mbits/s)	2.82	5.12	2.08	2.69

Table-56: Overall Summary of data download & upload speed 5G only & 4G only.

Note- “-”Respective technology was not observed during the test.					
RTO Office Alappuzha					
Parameters		Service Provider			
		AIRTEL	BSNL	RJIL	VIL
5G	Download Throughput Average (Mbits/s)	609.33	-	509.01	-
	Upload Throughput Average (Mbits/s)	81.82	-	52.68	-
4G	Download Throughput Average (Mbits/s)	49.31	9.97	20.10	18.08
	Upload Throughput Average (Mbits/s)	10.62	7.56	7.58	5.25

Table-57: Overall Summary of data download & upload speed 5G only & 4G only.

Note- “-”Respective technology was not observed during the test.					
Sree Subramanya Swami Temple					
Parameters		Service Provider			
		AIRTEL	BSNL	RJIL	VIL
5G	Download Throughput Average (Mbits/s)	147.88	-	388.19	-
	Upload Throughput Average (Mbits/s)	63.14	-	11.97	-
4G	Download Throughput Average (Mbits/s)	4.74	6.55	76.18	55.32
	Upload Throughput Average (Mbits/s)	15.48	9.11	13.68	4.90

Table-58: Overall Summary of data download & upload speed 5G only & 4G only.

Note- “-”Respective technology was not observed during the test.					
TD Medical College, Alappuzha					
Parameters		Service Provider			
		AIRTEL	BSNL	RJIL	VIL
5G	Download Throughput Average (Mbits/s)	80.69	-	218.73	-
	Upload Throughput Average (Mbits/s)	64.80	-	8.90	-
4G	Download Throughput Average (Mbits/s)	0.10	2.73	10.90	11.36
	Upload Throughput Average (Mbits/s)	0.17	5.49	1.53	4.40

Table-59: Overall Summary of data download & upload speed 5G only & 4G only.

Note- “-”Respective technology was not observed during the test.					
---	--	--	--	--	--

4.4 Walk Test

Walk Test has been conducted on 13th February 2025. Two locations have been tested in the city.

4.4.1 Walk test locations

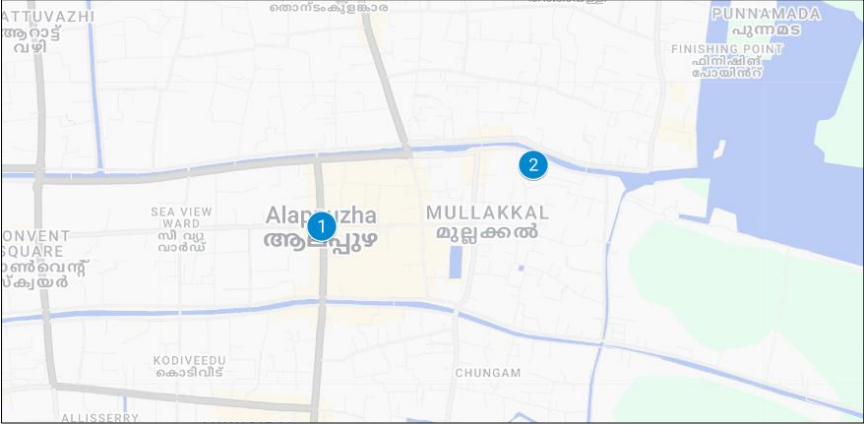


Figure-24: Walk Test locations.

4.4.2 Walk Test Covered

1. Alappuzha Railway Station
2. KSRTC Bus Stand, Alappuzha

4.4.3 Voice Performance

Alappuzha Railway Station				
Parameters	Service Provider			
	Auto-selection mode (5G/4G/3G/2G)			
	AIRTEL	BSNL	RJIL	VIL
Call Attempt	18	19	18	19
Call Setup Success Rate %	100.00	100.00	100.00	100.00
Drop Call Rate %	0.00	0.00	0.00	0.00
Call Setup Time-Average (Second)	1.12	0.93	0.50	0.75

Table-60: Summary of voice call performance in network auto-selection mode (5G/4G/3G/2G).

KSRTC Bus Stand, Alappuzha				
Parameters	Service Provider			
	Auto-selection mode (5G/4G/3G/2G)			
	AIRTEL	BSNL	RJIL	VIL
Call Attempt	10	10	10	10
Call Setup Success Rate %	100.00	100.00	100.00	100.00
Drop Call Rate %	0.00	0.00	0.00	0.00
Call Setup Time-Average (Second)	1.10	0.88	0.55	0.74

Table-61: Summary of voice call performance in network auto-selection mode (5G/4G/3G/2G).

4.4.4 Data Performance

(a) Data Parameters (Auto-selection mode- 5G/4G/3G/2G)

Alappuzha Railway Station				
Parameters	Service Provider			
	Auto-selection mode (5G/4G/3G/2G)			
	AIRTEL	BSNL	RJIL	VIL
Download Throughput Average (Mbits/s)	349.57	10.12	479.14	32.92
Download Session Setup Success Rate %	100.00	100.00	78.95	58.33
Upload Throughput Average (Mbits/s)	35.30	14.80	55.66	1.31
Upload Session Setup Success Rate %	100.00	100.00	100.00	90.91
Latency (ms) - 50th Percentile	35.95	14.55	17.10	244.25

Table-62: Summary of Data performance in network auto-selection mode (5G/4G/3G/2G).

Note- Approximately 69.23% of upload sessions in BSNL are experiencing disconnections within 1 second of server connection, resulting in failed uploads. Results of those sessions are not accounted in average, 80th percentile and 20th percentile.

KSRTC Bus Stand, Alappuzha				
Parameters	Service Provider			
	Auto-selection mode (5G/4G/3G/2G)			
	AIRTEL	BSNL	RJIL	VIL
Download Throughput Average (Mbits/s)	111.93	25.26	250.61	21.92
Download Session Setup Success Rate %	100.00	100.00	66.67	91.67
Upload Throughput Average (Mbits/s)	20.57	16.01	12.14	8.00
Upload Session Setup Success Rate %	100.00	100.00	90.91	100.00
Latency (ms) - 50th Percentile	36.65	12.50	25.85	25.15

Table-63: Summary of Data performance in network auto-selection mode (5G/4G/3G/2G).

4.5 Coastal

Drive test has been conducted on 13th February 2025 covering one Coastal route. (Refer Table-1)

4.5.1 Drive test route

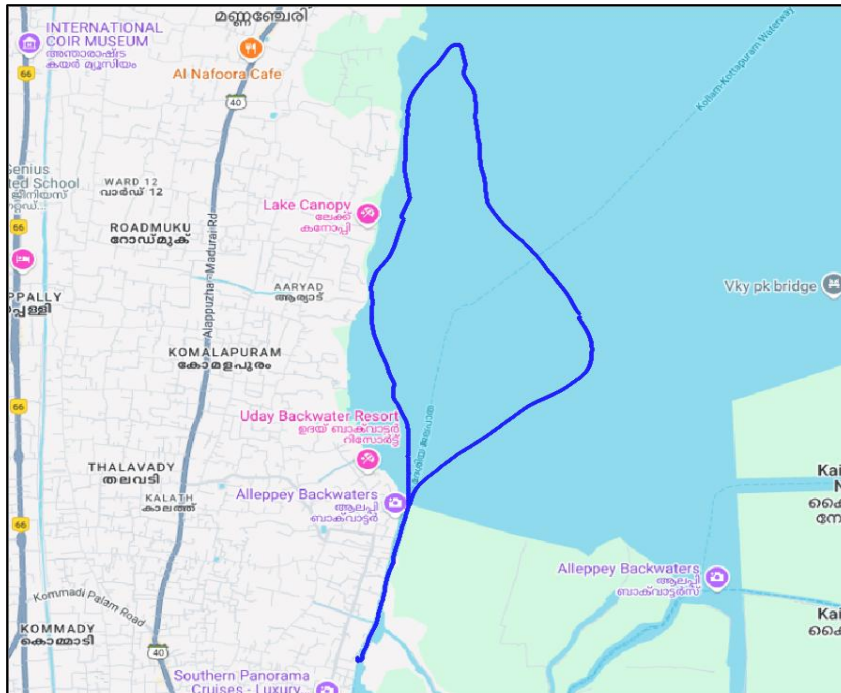


Figure-25: Drive test route coastal

4.5.2 Routes Covered

1. Alappuzha Backwaters

4.5.3 Voice Performance

(a) Voice Call Performance in auto network selection mode (5G/4G/3G/2G)

Parameters	Service Provider			
	Auto-selection mode (5G/4G/3G/2G)			
	AIRTEL	BSNL	RJIL	VIL
Call Attempts	54	55	54	56
Call Setup Success Rate %	100.00	100.00	100.00	96.43
Drop Call Rate %	0.00	0.00	0.00	0.00
Call Setup Time Average (Second)	1.21	0.96	0.52	0.71
Handover Success Rate %	100.00	100.00	99.68	100.00

Table-64: Summary of voice call performance in network auto-selection mode.

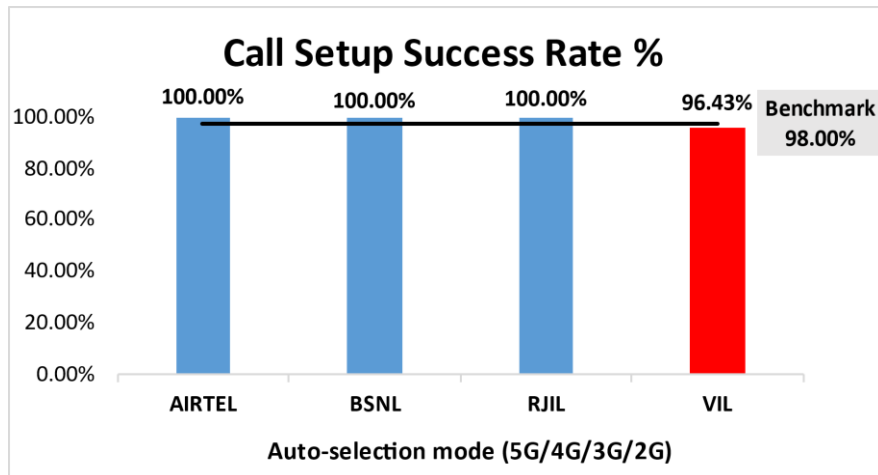


Figure-26: Performance for call setup success rate.

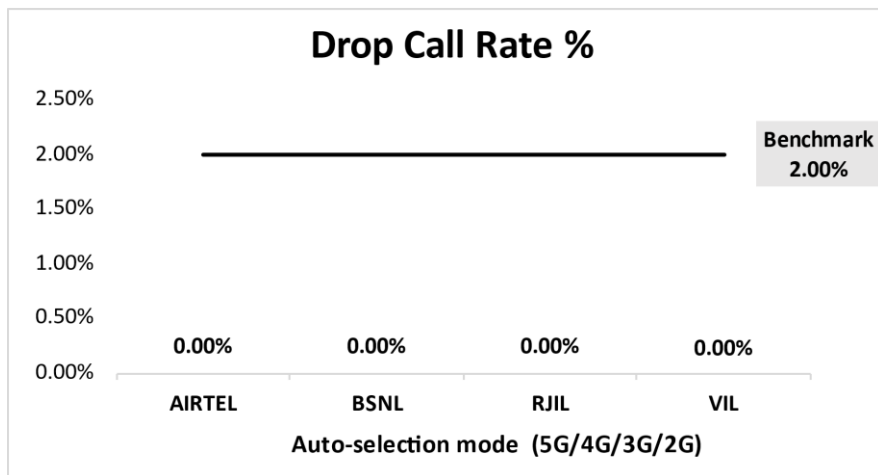


Figure-27: Performance for drop call rate.

(f) Network Technology: This section represent time spent on various network technologies.

Technology	Service Provider			
	AIRTEL	BSNL	RJIL	VIL
5G	6.54%	NA	19.67%	NA
4G	93.46%	100.00%	80.33%	100.00%
3G	NA	0.00%	NA	NA
2G	0.00%	0.00%	NA	0.00%
Limited Service	0.00%	0.00%	0.00%	0.00%

Table-65:Time spent on technology during drive test.

Note-

- NA- Service provider doesn't provide services in respective technology.

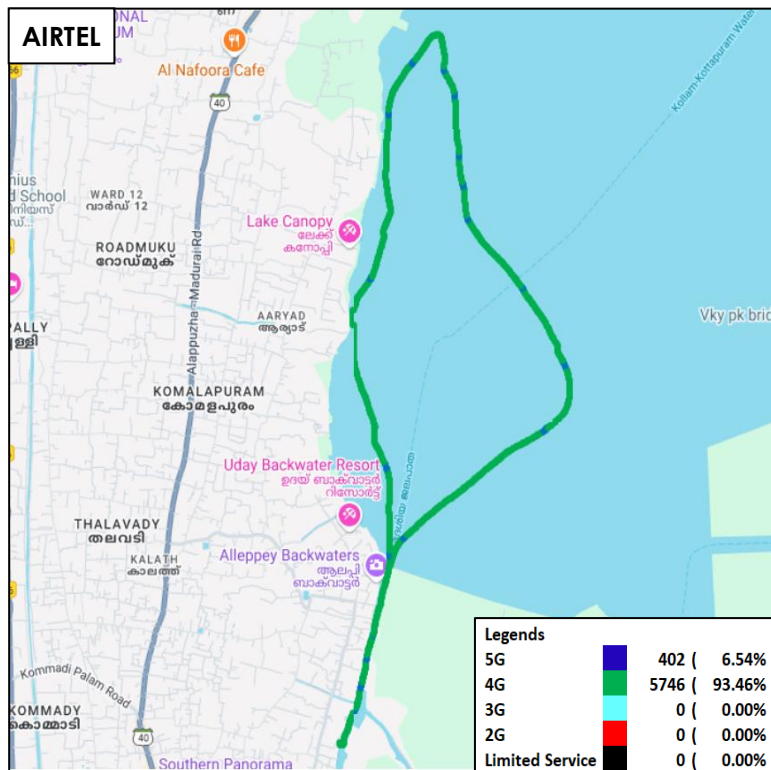


Figure-28: Serving technology plots in auto-selection mode (5G/4G/3G/2G)-AIRTEL

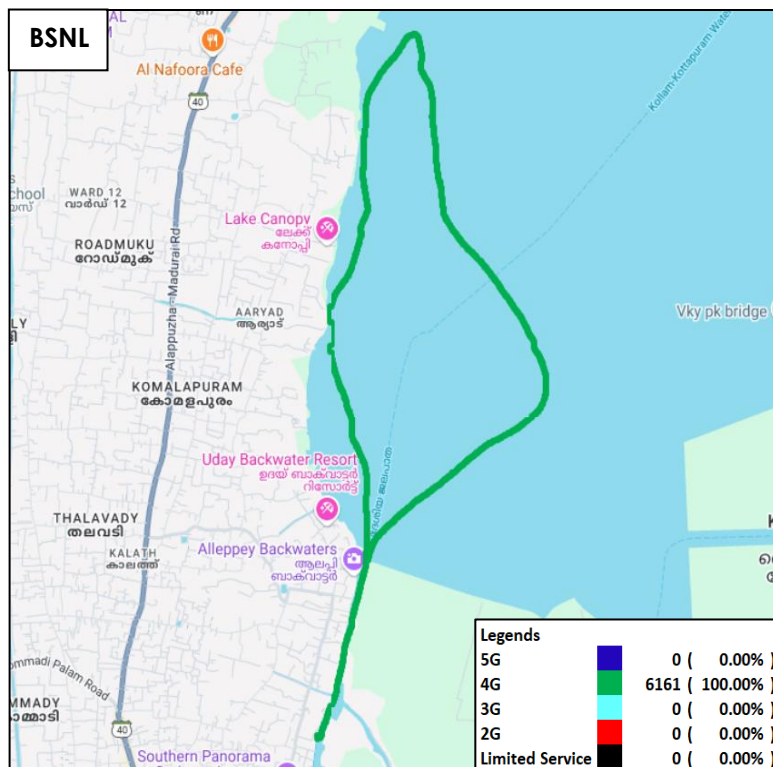


Figure-29: Serving technology plots in auto-selection mode (5G/4G/3G/2G)-BSNL

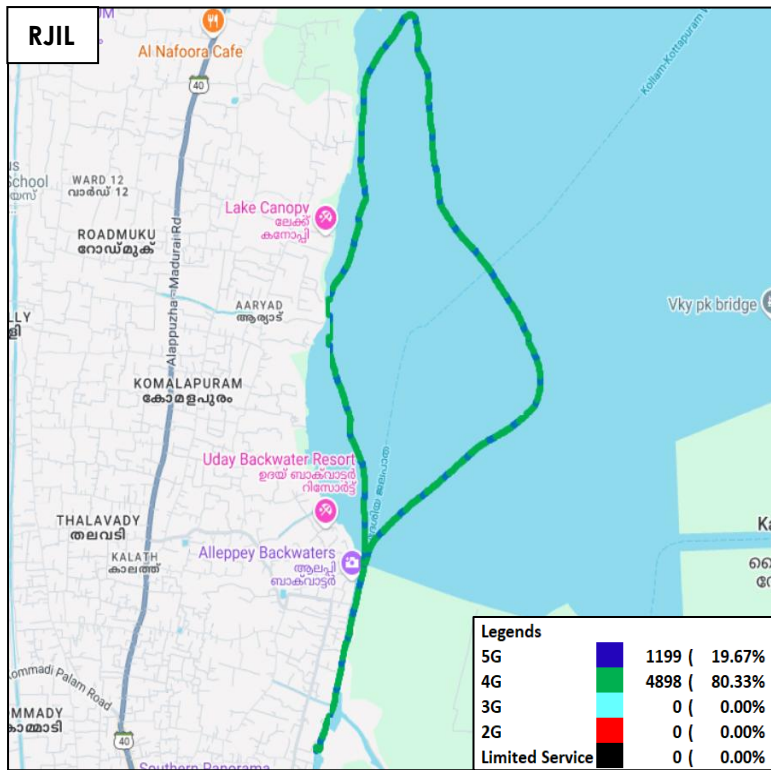


Figure-30: Serving technology plots in auto-selection mode (5G/4G/3G/2G)-RJIL.

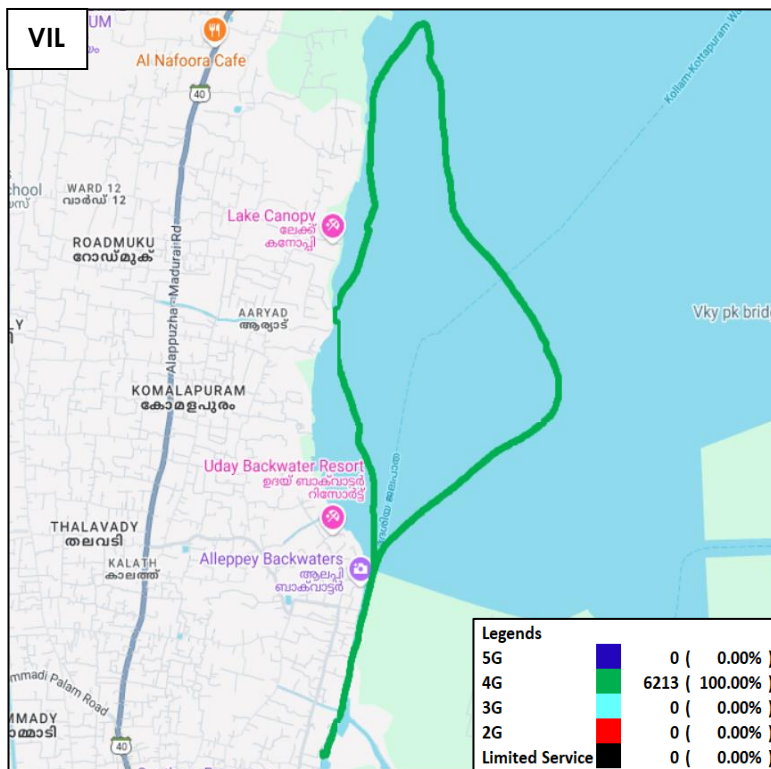


Figure-31: Serving technology plots in auto-selection mode (5G/4G/3G/2G) -VIL.

(g) Network Signal Strength Distribution: The following chart provide signal strength distribution for auto-selection mode (5G/4G/3G/2G). (Refer figure-42, 43, 44 & 45 for map view)

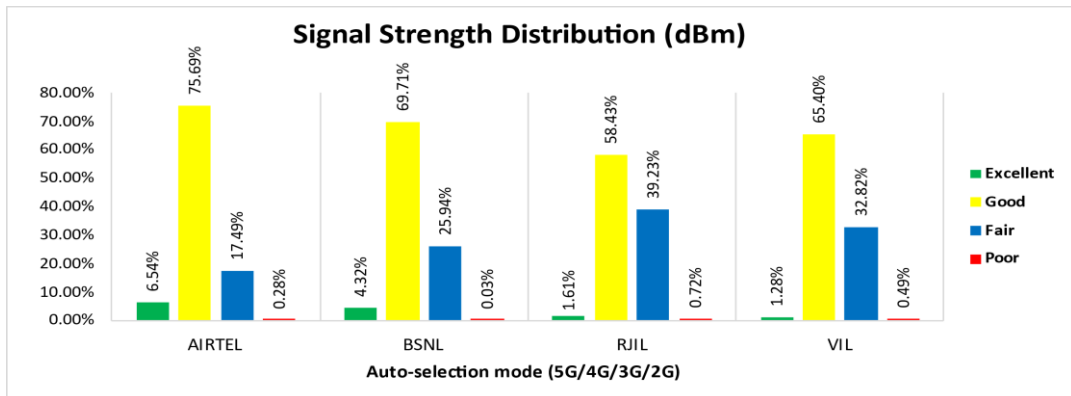


Figure-32: Signal strength distribution auto-selection mode 5G/4G/3G/2G.

Observations:

- Airtel has 7% of samples falling in the excellent signal strength category.
- BSNL has 4% of samples falling in the excellent signal strength category.
- RJIL has 2% of samples falling in the excellent signal strength category.
- VIL has 1% of samples falling in the excellent signal strength category.

4.5.4 Data Performance

(b) Data Parameters (Auto-selection mode- 5G/4G/3G/2G)

Parameters		Service Provider			
		Auto-selection mode (5G/4G/3G/2G)			
		AIRTEL	BSNL	RJIL	VIL
Download Throughput (Mbits/s)	Average	220.09	4.84	327.61	25.75
	80th Percentile	294.02	7.84	489.66	38.97
	20th Percentile	156.77	0.73	181.96	10.93
Upload Throughput (Mbits/s)	Average	31.94	4.69	12.27	6.27
	80th Percentile	46.69	6.81	19.93	8.50
	20th Percentile	18.55	2.04	3.25	2.59
Latency (ms)	50th Percentile	20.00	15.95	15.50	28.35

Table-66: Summary of Data performance in network auto-selection mode.

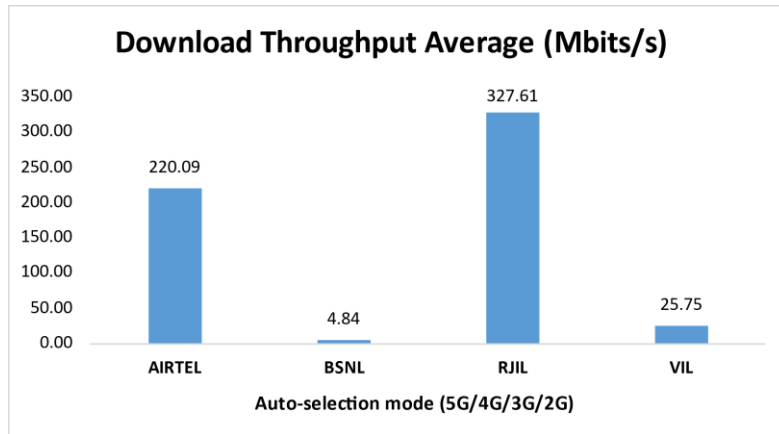


Figure-33: Download throughput

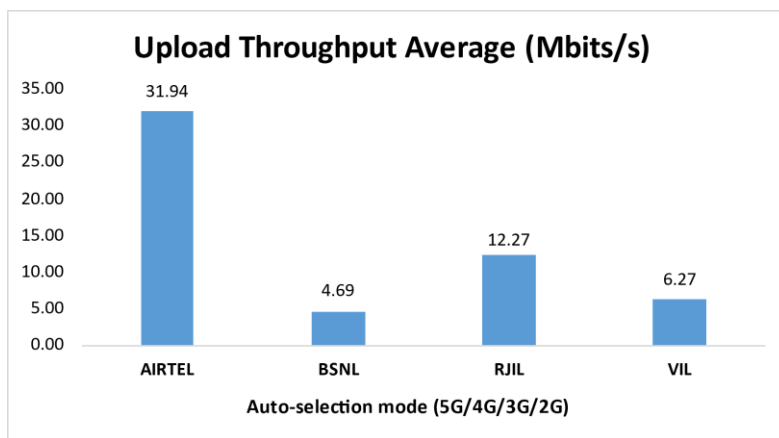


Figure-34: Upload throughput

5. Voice & Data Key findings

5.1 Overall Voice

1. Call Setup Success Rate:

- a) Airtel, BSNL and VIL have 100.00%, 98.75% and 100.00% call setup success rate respectively in 3G/2G network mode. (refer table-3)
- b) Airtel, BSNL, RJIL and VIL have 100.00%, 96.46%, 100.00% and 98.58% call setup success rate respectively in auto-selection mode (5G/4G/3G/2G). (refer table-5)

2. Call Setup Time:

- a) Airtel, BSNL and VIL call setup time is 4.34, 4.33 & 4.64 seconds respectively in 3G/2G network mode. (refer table-3)
- b) Airtel, BSNL, RJIL & VIL call setup time is 1.18, 1.27, 0.52 & 1.01 seconds respectively in Auto-selection mode (5G/4G/3G/2G). (refer table-5)

3. Call Silence/Mute Rate:

In packet switched network (4G/5G), VIL, BSNL, Airtel and RJIL have 2.49%, 2.04%, 0.25% & 0.00% silence call rate respectively. Further BSNL has higher RTP packet loss rate in downlink (3.16%) compared to VIL (1.54%), RJIL (0.20%) and Airtel (0.18%), and In uplink the RTP packet loss rate is higher for VIL (2.30%) compared to BSNL (2.09%), RJIL (0.30%) and Airtel (0.18%). (refer table-6)

4. Drop Call Rate:

- a) Airtel, BSNL and VIL drop call rate 0.00%, 0.25% & 0.00% respectively in 3G/2G network mode. (refer table-3)
- b) Airtel, BSNL, RJIL and VIL drop call rate 0.00%, 2.24% 0.00% & 0.00% respectively in Auto-selection mode (5G/4G/3G/2G). (refer table-5)

5.2 Overall Data

1. Data download and upload performance (Dynamic i.e. while moving):

- a) Airtel, BSNL, RJIL and VIL average download speeds are 183.56 Mbps, 9.50 Mbps, 332.98 Mbps & 24.23 Mbps respectively. (refer table-9)
- b) Airtel, BSNL, RJIL and VIL average upload speeds are 25.59 Mbps, 6.36 Mbps, 24.08 Mbps & 5.73 Mbps respectively. (refer table-9)

2. Data download and upload performance (static i.e. while stationary):

- a) At Hotspots, Airtel, BSNL, RJIL and VIL average download speeds are 200.02 Mbps, 10.84 Mbps, 336.54 Mbps & 28.11 Mbps respectively. (refer table-32)
- b) At Hotspots, Airtel, BSNL, RJIL and VIL average upload speeds are 36.19 Mbps, 8.31 Mbps, 27.28 Mbps & 5.93 Mbps respectively. (refer table-32)

3. Data session setup success rate (static i.e. while stationary):

- a) Airtel, BSNL, RJIL and VIL have 100.00%, 100.00%, 92.31% & 100.00% download session setup success rate respectively. (refer table-32)
- b) Airtel, BSNL, RJIL and VIL have 100.00% upload session setup success rate. (refer table-32)

5.3 Operator wise Key Findings

1. Airtel:

Voice

- 100.00% call setup success rate and 0.00% drop call rate have been observed for 3G/2G network mode respectively for LSA & City Drive. Performance is well within the benchmark of 98.00% & 2.00% respectively. (refer table-3 & 11)
- 100.00% call setup success rate and 0.00% drop call rate have been observed for auto-selection mode (5G/4G/3G/2G) respectively for LSA & City Drive. Performance is well within the benchmark of 98.00% & 2.00% respectively. (refer table-5 & 13)
- 100.00% call setup success rate and 0.00% drop call rate have been observed for auto-selection mode (5G/4G/3G/2G) respectively for all hotspot locations. Performance is well within the benchmark of 98.00% & 2.00% respectively. (refer table-18)
- 100.00% call setup success rate and 0.00% drop call rate have been observed for auto-selection mode (5G/4G/3G/2G) respectively for both walk test locations. Performance is well within the benchmark of 98.00% & 2.00% respectively. (refer table-60 & 61)
- 100.00% call setup success rate and 0.00% drop call rate have been observed for auto-selection mode (5G/4G/3G/2G) respectively for coastal drive. Performance is well within the benchmark of 98.00% & 2.00% respectively. (refer table-64)

Data

- Airtel has 183.56 Mbps average download throughput & 25.59 Mbps average upload throughput across measured routes for LSA. (refer table-9)
- Airtel has 171.56 Mbps average download throughput & 22.92 Mbps average upload throughput across measured routes for city drive. (refer table-17)
- Mannarasala Sree Nagaraja Temple and TD Medical College Alappuzha have less download speed (less than 100 Mbps) out of total 13 Hotspots for auto-selection mode (5G/4G/3G/2G). (refer table-42, & 45)
- Chakkulathukavu Temple, City Market Alappuzha and Mannarasala Sree Nagaraja Temple hotspot have less upload speed (less than 20 Mbps) out of total 13 Hotspots for auto-selection mode (5G/4G/3G/2G). (refer table- 37, 38 & 42)

- Airtel has 220.09 Mbps average download throughput & 31.94 Mbps average upload throughput across measured routes for coastal drive. (refer table-66)

2. BSNL:

Voice

- 98.75% call setup success rate and 0.25% drop call rate have been observed for 3G/2G network mode respectively for LSA & City Drive. Performance is well within the benchmark of 98.00% & 2.00% respectively. (refer table-3 & 11)
- 96.46% call setup success rate and 2.24% Drop Call Rate have been observed in auto-selection mode (5G/4G/3G/2G) respectively for LSA. Performance is not meeting the benchmark of 98.00% & 2.00% respectively. (refer table-5)
- 94.94% call setup success rate and 3.15% Drop Call Rate have been observed in auto-selection mode (5G/4G/3G/2G) respectively for city drive. Performance is not meeting the benchmark of 98.00% & 2.00% respectively. (refer table-13)
- 99.23% call setup success rate and 0.78% drop call rate have been observed in auto-selection mode (5G/4G/3G/2G) respectively for all hotspot locations. Performance is well within the benchmark of 98.00% & 2.00% respectively. (refer table-18)
- 100.00% call setup success rate and 0.00% drop call rate have been observed for auto-selection mode (5G/4G/3G/2G) respectively for both walk test locations. Performance is well within the benchmark of 98.00% & 2.00% respectively. (refer table-60 & 61)
- 100.00% call setup success rate and 0.00% drop call rate have been observed for auto-selection mode (5G/4G/3G/2G) respectively for coastal drive. Performance is well within the benchmark of 98.00% & 2.00% respectively. (refer table-64)

Data

- BSNL has 9.50 Mbps average download throughput & 6.36 Mbps average upload throughput across measured routes for LSA. (refer table-9)
- BSNL has 9.51 Mbps average download throughput & 5.92 Mbps average upload throughput across measured routes for city drive. (refer table-17)
- Alappuzha Beach, Alappuzha Lighthouse, Alleppey Boat House, Ambalapuzha Sree Krishna Temple, City Market Alappuzha, District Court Alappuzha, RTO Office Alappuzha, Sree Subramanya Swami Temple and TD Medical College Alappuzha have less download speed (less than 10 Mbps) out of total 13 Hotspots for auto-selection mode (5G/4G/3G/2G) (refer table-33, 34, 35, 36, 38, 40, 43, 44 & 45)
- BSNL has 4.84 Mbps average download throughput & 4.69 Mbps average upload throughput across measured routes for coastal drive. (refer table-66)

3. RJIL:

Voice

- 100.00% call setup success rate and 0.00% Drop Call Rate have been observed in auto-selection mode (5G/4G/3G/2G) respectively for LSA & City Drive. Performance is well within the benchmark of 98.00% & 2.00% respectively. (refer table-5 &13)
- 100.00% call setup success rate and 0.00% drop call rate have been observed in auto-selection mode (5G/4G/3G/2G) respectively for all hotspot locations. Performance is well within the benchmark of 98.00% & 2.00% respectively. (refer table-18)
- 100.00% call setup success rate and 0.00% drop call rate have been observed for auto-selection mode (5G/4G/3G/2G) respectively for both walk test locations. Performance is well within the benchmark of 98.00% & 2.00% respectively. (refer table-60 & 61)
- 100.00% call setup success rate and 0.00% drop call rate have been observed for auto-selection mode (5G/4G/3G/2G) respectively for coastal drive. Performance is well within the benchmark of 98.00% & 2.00% respectively. (refer table-64)

Data

- RJIL has 332.98 Mbps average download speed & 24.08 Mbps average upload speed across measured routes in LSA. (refer table-9)
- RJIL has 329.06 Mbps average download speed & 24.02 Mbps average upload speed across measured routes in city drive. (refer table-17)
- Alappuzha Beach has less download speed (less than 100 Mbps) out of total 13 Hotspots for auto-selection mode (5G/4G/3G/2G). (refer table-33)
- Chakkulathukavu Temple, City Market Alappuzha, College of Engineering And Management Punnappa Alappuzha, International Coir Museum, Mannarasala Sree Nagaraja Temple, Sree Subramanya Swami Temple and TD Medical College Alappuzha have less download speed (less than 20 Mbps) out of total 13 hotspots for auto-selection mode (5G/4G/3G/2G). (refer table- 37, 38, 39, 41, 42, 44 & 45)
- KSRTC Bus Stand Alappuzha has less upload speed (less than 20 Mbps) out of total 2 walk test for auto-selection mode (5G/4G/3G/2G). (refer table-63)
- RJIL has 327.61 Mbps average download throughput & 12.27 Mbps average upload throughput across measured routes for coastal drive. (refer table-66)

4. VIL:

Voice

- 100.00% call setup success rate and 0.00% drop call rate have been observed for 3G/2G network mode respectively for LSA & City Drive. Performance is well within the benchmark of 98.00% & 2.00% respectively. (refer table-3 & 11)
- 98.58% call setup success rate and 0.00% drop call rate have been observed for auto-selection mode (5G/4G/3G/2G) respectively for LSA. Performance is well within the benchmark of 98.00% & 2.00% respectively. (refer table-5)
- 98.56% call setup success rate and 0.00% drop call rate have been observed for auto-selection mode (5G/4G/3G/2G) respectively for city drive. Performance is well within the benchmark of 98.00% & 2.00% respectively. (refer table-13)
- 99.23% call setup success rate and 0.00% drop call rate have been observed in auto-selection mode (5G/4G/3G/2G) respectively for all hotspot locations. Performance is well within the benchmark of 98.00% & 2.00% respectively. (refer table-18)
- 100.00% call setup success rate and 0.00% drop call rate have been observed for auto-selection mode (5G/4G/3G/2G) respectively for both walk test locations. Performance is well within the benchmark of 98.00% & 2.00% respectively. (refer table-60 & 61)
- 96.43% call setup success rate and 0.00% drop call rate have been observed for auto-selection mode (5G/4G/3G/2G) respectively for coastal drive. Performance is well within the benchmark of 98.00% & 2.00% respectively. (refer table-64)

Data

- VIL has 24.23 Mbps average download speed & 5.73 Mbps average upload speed across measured routes in LSA. (refer table-9)
- VIL has 23.30 Mbps average download speed & 5.66 Mbps average upload speed across measured routes in city drive. (refer table-17)
- Mannarasala Sree Nagaraja Temple has less download speeds (less than 10 Mbps) out of total 13 hotspots for auto-selection mode (5G/4G/3G/2G). (refer table-42)
- District Court Alappuzha has less upload speed (less than 2 Mbps) out of total 13 hotspots for auto-selection mode (5G/4G/3G/2G). (refer table-40)
- Alappuzha Railway Station has less upload speed (less than 2 Mbps) out of total 2 walk test for auto-selection mode (5G/4G/3G/2G). (refer table-62)
- VIL has 25.75 Mbps average download throughput & 6.27 Mbps average upload throughput across measured routes for coastal drive. (refer table-66)

6. Annexure

6.1 Route wise coverage map

6.1.1 City

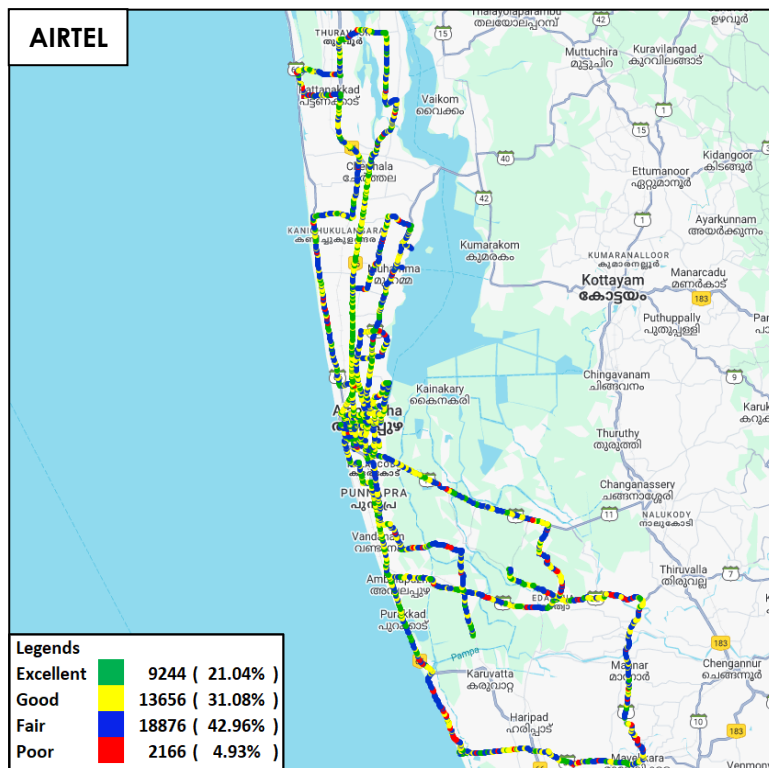


Figure-35: Signal strength 3G/2G network mode – AIRTEL.

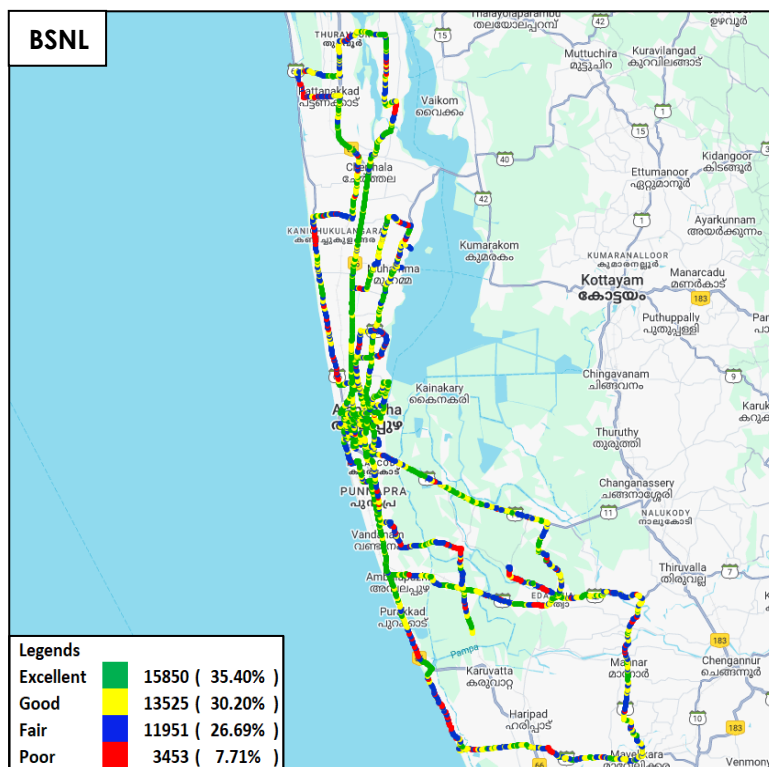


Figure-36: Signal strength 3G/2G network mode – BSNL.

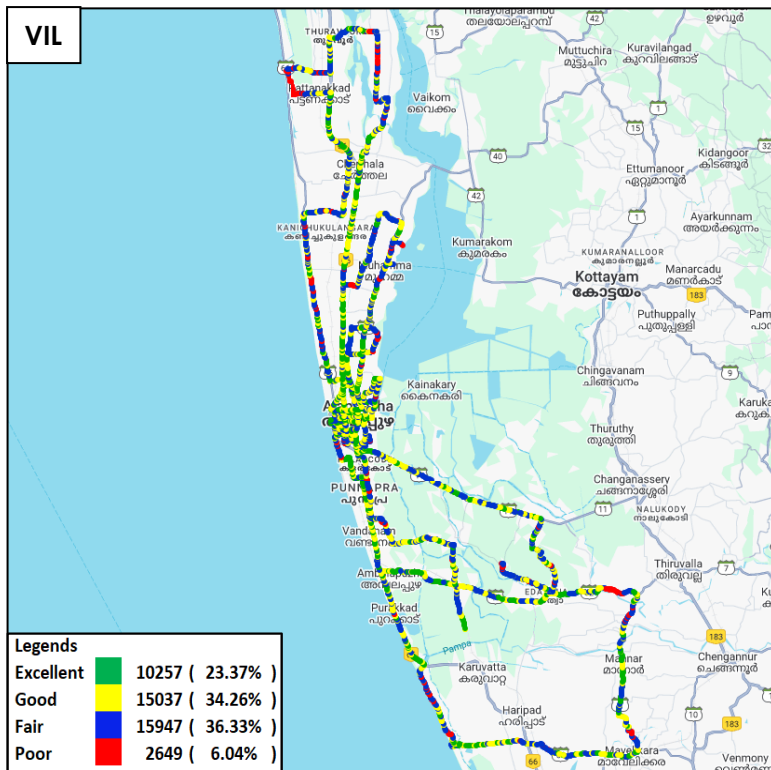


Figure-37: Signal strength 3G/2G network mode – VIL.

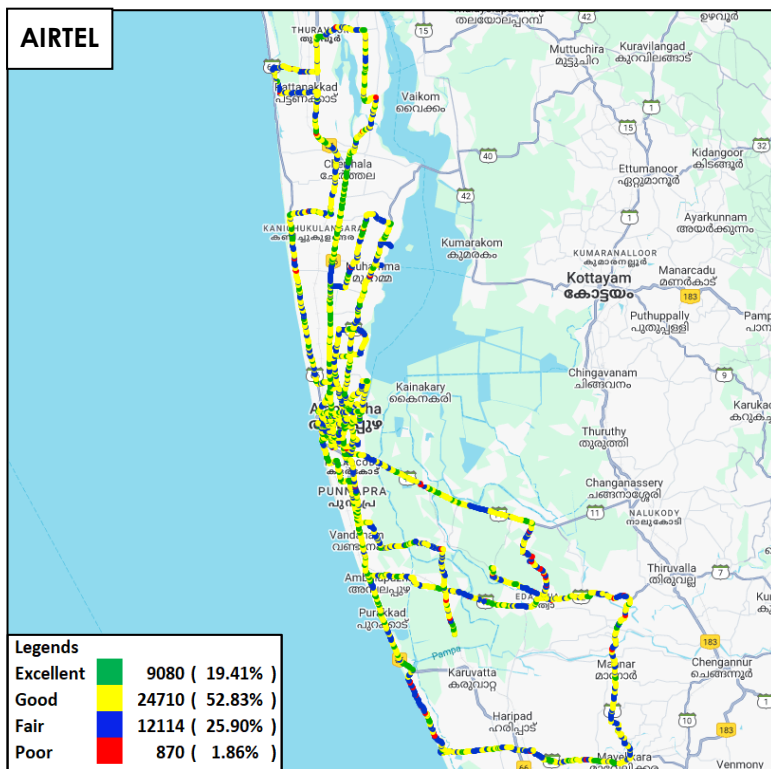


Figure-38: Signal strength auto-selection mode 5G/4G/3G/2G – AIRTEL.

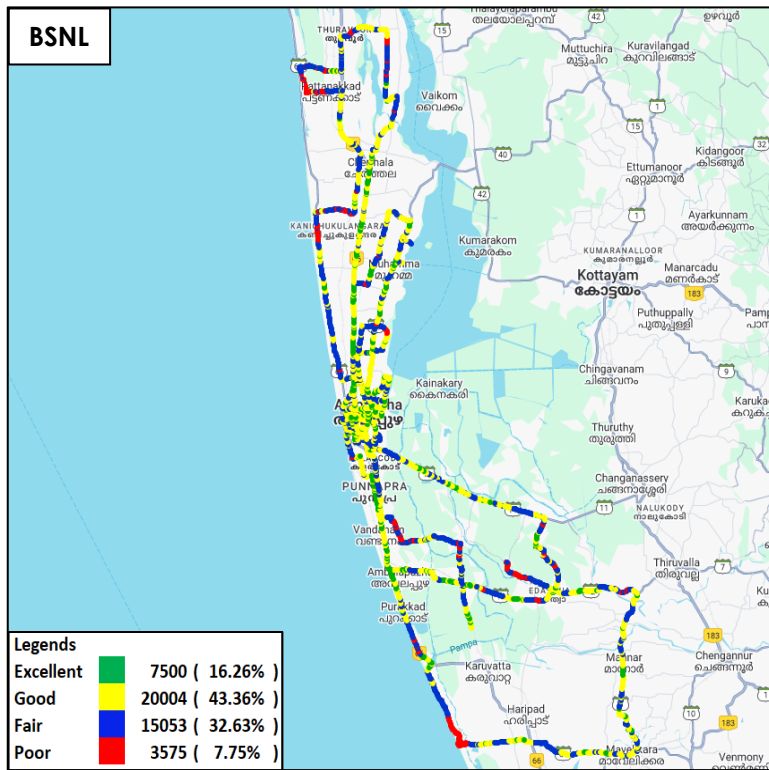


Figure-39: Signal strength auto-selection mode 5G/4G/3G/2G – BSNL.

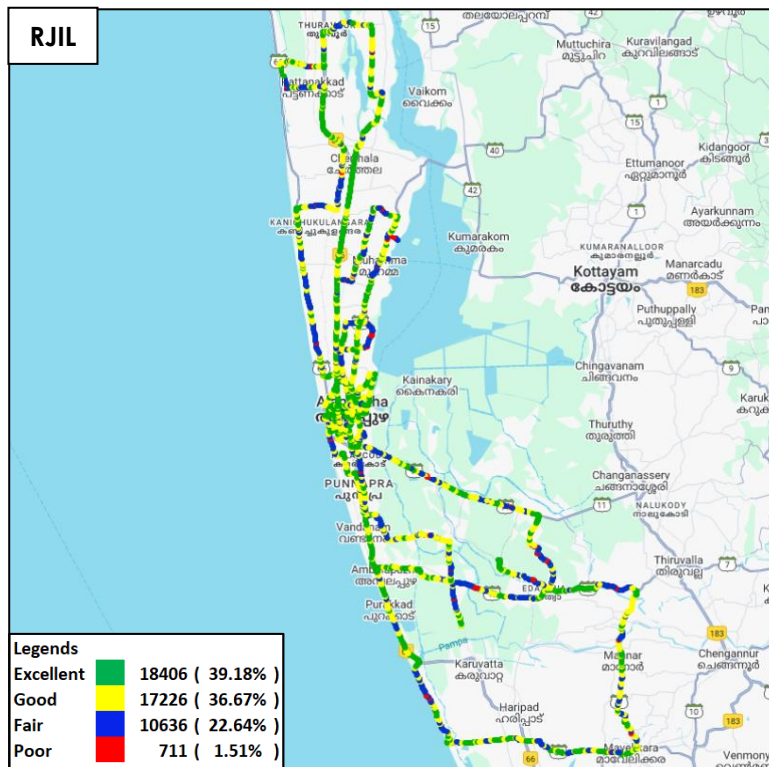


Figure-40: Signal strength auto-selection mode 5G/4G/3G/2G – RJIL.

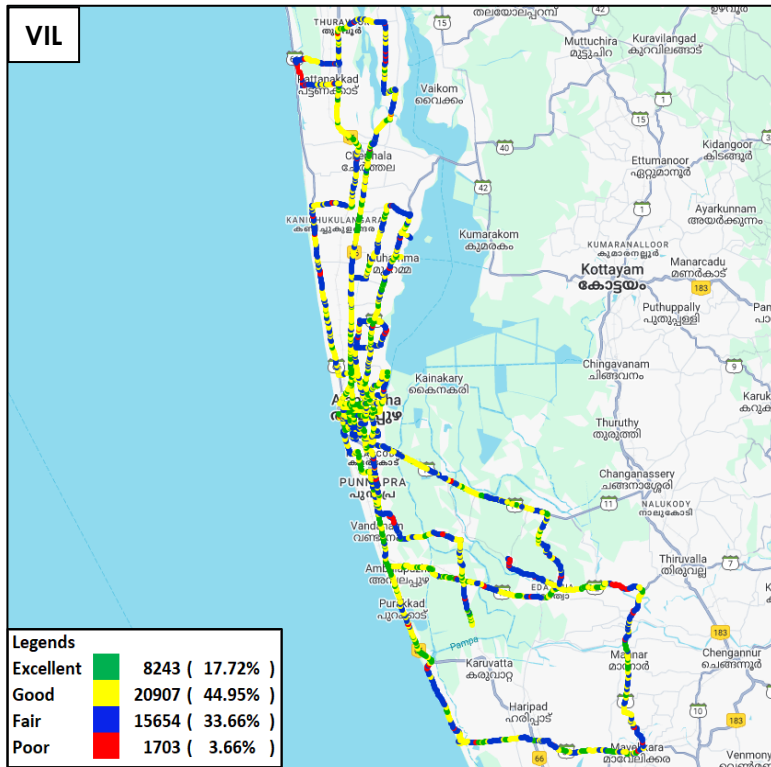


Figure-41: Signal strength auto-selection mode 5G/4G/3G/2G – VIL.

6.1.2 Coastal

i) Alappuzha Backwaters

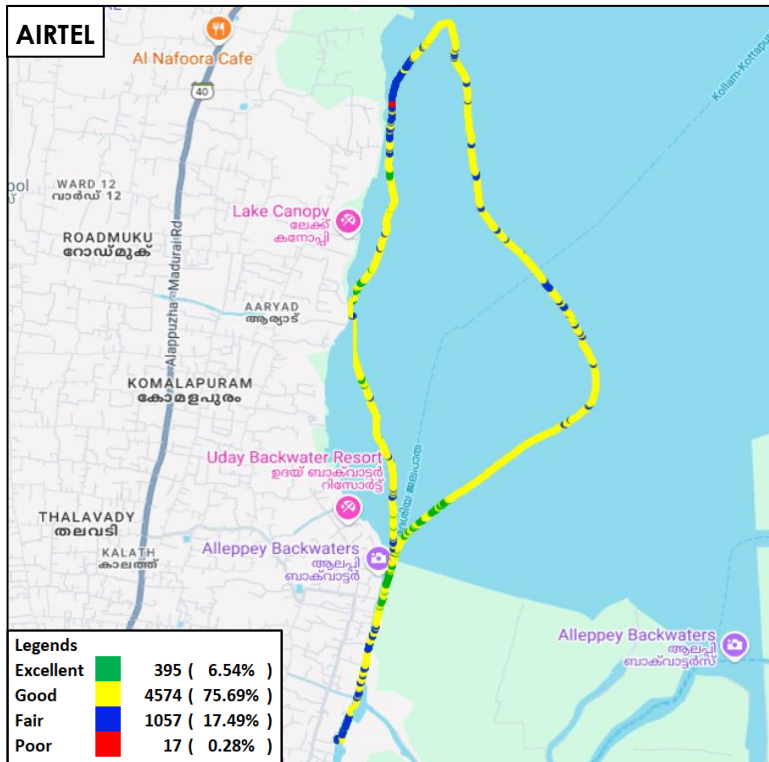


Figure-42: Signal strength auto-selection mode 5G/4G/3G/2G-AIRTEL

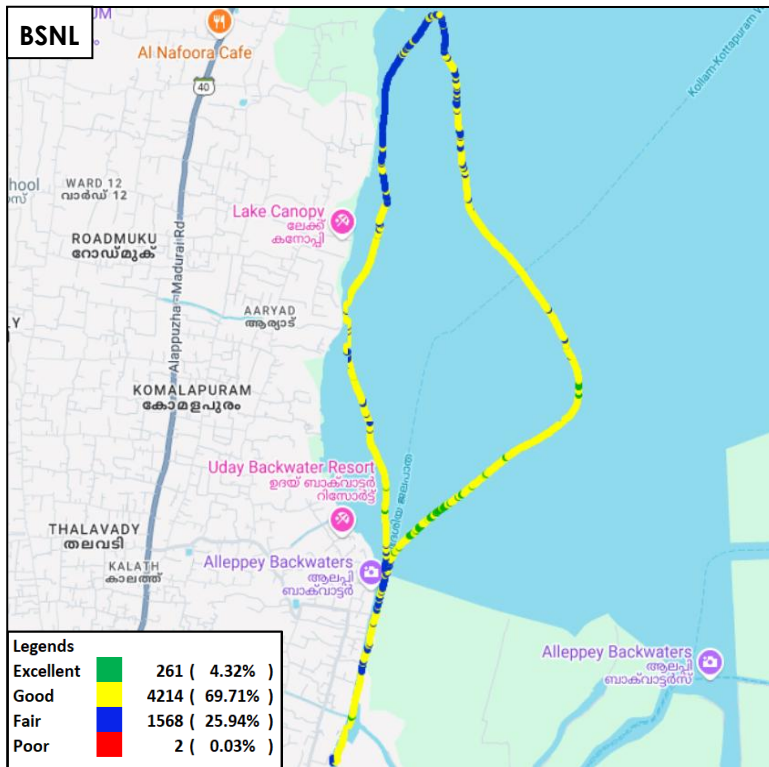


Figure-43: Signal strength auto-selection mode 5G/4G/3G/2G – BSNL.

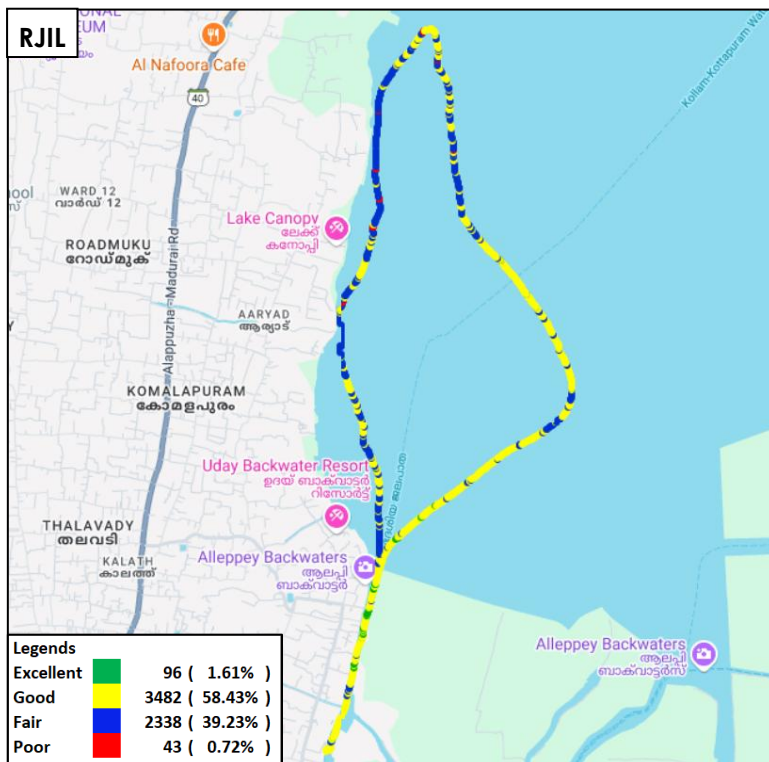


Figure-44: Signal strength auto-selection mode 5G/4G/3G/2G – RJIL

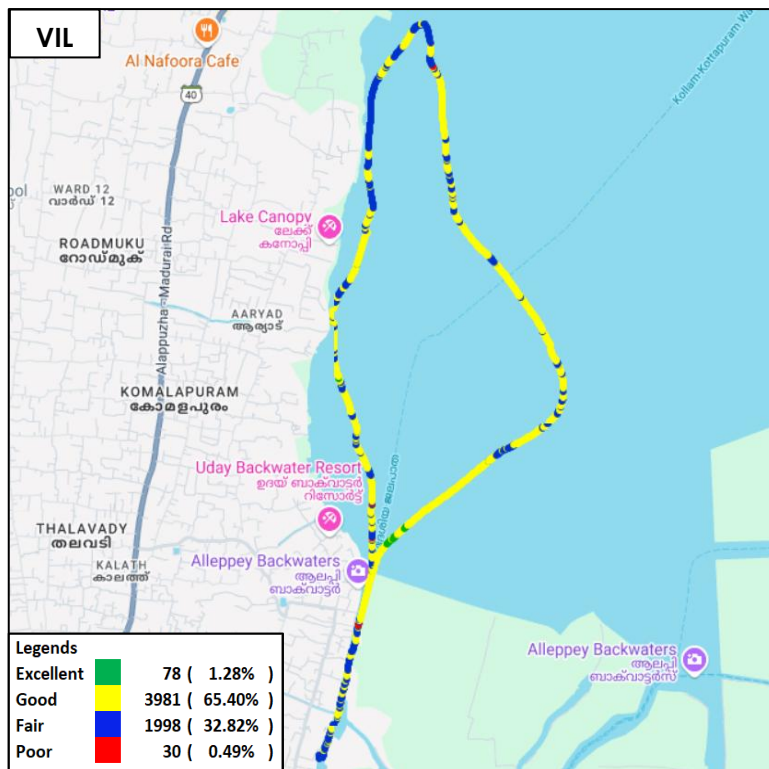


Figure-45: Signal strength auto-selection mode 5G/4G/3G/2G – VIL.

7. Appendix

The details of the setup used for conducting the drive test and the network or performance parameters captured under different conditions may be seen at Appendix-I. The calculation method of each QoS parameter is given in Appendix-II of the report. The summary of key equipment used in technical setup is as under

- **Device-1:** OnePlus Nord CE3 for 3G/2G CAT-15 Smartphone.
- **Device-2:** Samsung Galaxy S23 for 5G/4G/3G/2G CAT-20 Smartphone
- **Drive test Software:** Azenqos Engineering capable Applications to capture actual user experience.

7.1 Appendix-I

7.1.1 Drive test setup

Voice Call		
Call details	Technology	Detail
Call Setup Timeout	<ul style="list-style-type: none"> • 3G/2G auto mode- switch Call • 5G/4G/3G/2G auto mode- switch Call • 5G/4G MOS Call 	30 Sec
Call Duration		90 Sec
Wait/ Guard Time		15 Sec

Table-67: Voice test detail

Note-

- There is 15 sec wait time after locking and before starting first call in 3G/2G call.
- 10 calls to be made at each Hotspot location.
- Minimum 10 Calls to be made during the walk test. Call count will be increased based on walk test distance.
- Speech quality (MOS) has been measured only in city drive & highway by making Mobile to Mobile call.
- 180 Sec calls were made only in highway & railway route drive.

Data Test		
Test Type	Technology	Detail
HTTP/FTP Download	5G/4G/3G/2G Auto Mode	500 MB File- 30 Sec Timeout, (Multithread 3- TCP Connection at a time)
HTTP/FTP Upload		250 MB File- 30 Sec Timeout, (Multithread 3- TCP Connection at a time)
YouTube Streaming		20 Sec Video & 25 sec Timeout (Only at Hotspot)

Web Browsing		3 popular websites (www.google.co.in , www.amazon.in , www.facebook.com)
		20 sec timeout (only at Hotspot)
Latency		25 count- Dynamic 1000 count- Hotspot Payload- 42 bytes in all drive

Table-68: Data test detail

Note-

- 5 Data iteration to be done at each hotspot location.
- Minimum 5 iteration to be made during the walk test. Iteration count will be increased based on walk test distance.
- Ping test to be performed only once at hotspot location.
- Youtube & Web browsing test to be performed at static location only.
- All values are taken up to two decimal places with round off.
- Download and upload testing has been done on FTP server for Airtel, BSNL & RJIL. (Airtel, BSNL & RJIL not provided HTTP server)
- VIL download and upload testing is done on HTTP Server.
- Download & Upload test performed at hotspot locations in 4G/3G/2G auto-selection also.

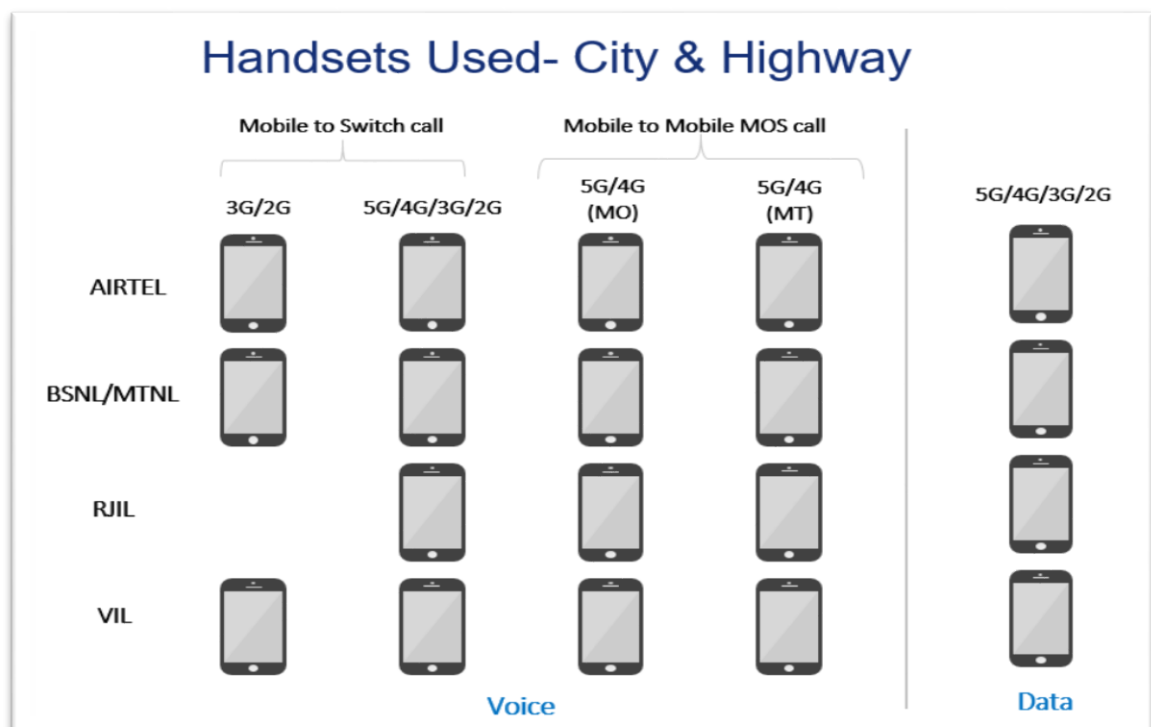


Figure-46: Number of handsets used in city & highway drive

MO: Mobile originating

MT: Mobile terminating

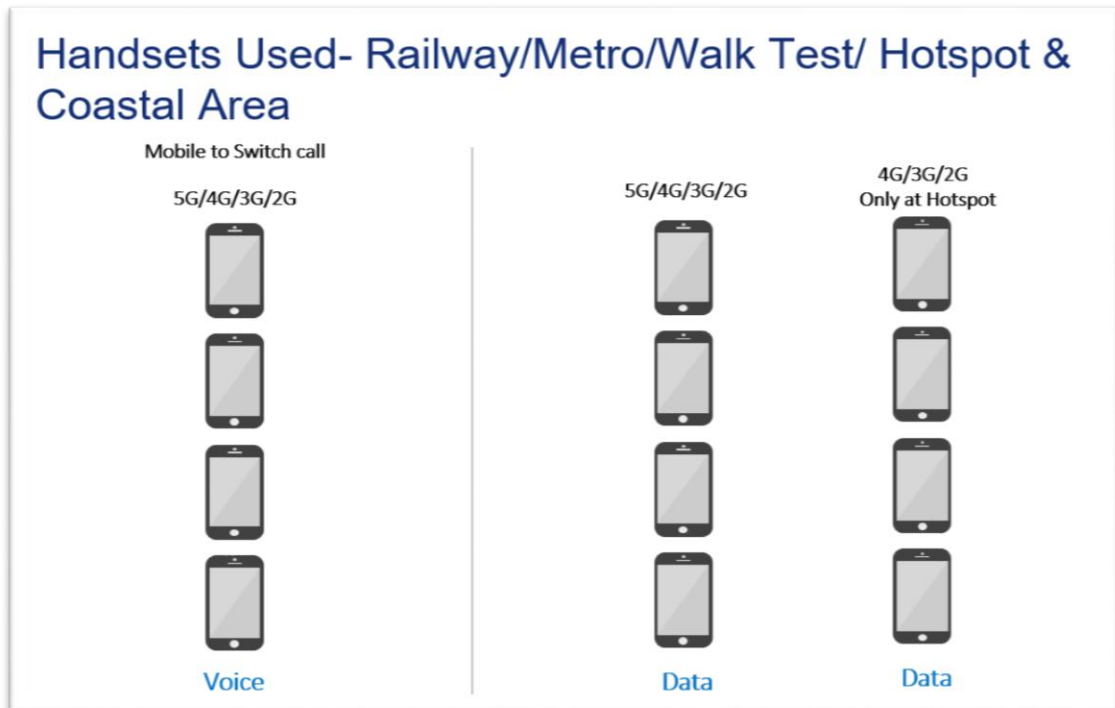


Figure-47: Number of handsets used in railway/metro/walktest/hotspot & coastal area

7.1.2 Drive test Methodology

(a) Dynamic voice testing (on the move)

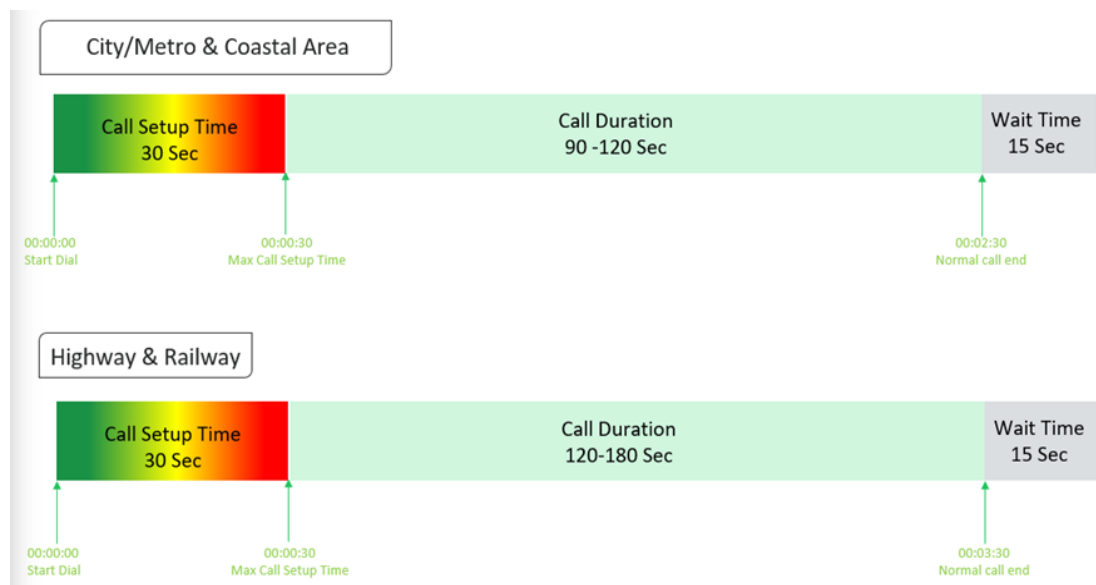


Figure-48: Voice test script for city/railway/metro/highway & coastal area

- 15 sec wait time is applied after locking Radio Access Technology (RAT) to 3G/2G and before starting first call in 3G/2G call.
- Speech quality (MOS) will be measured only City & Highway drive by making Mobile to Mobile calls.

(b) Hotspot voice testing



Figure-49: Voice test script for walktest/hotspot

- 10 calls to be made at each Hotspot location.
- Minimum 10 Calls to be made during the walk test. Call count will be increased based on walk test distance.

(c) Dynamic Data (internet) test

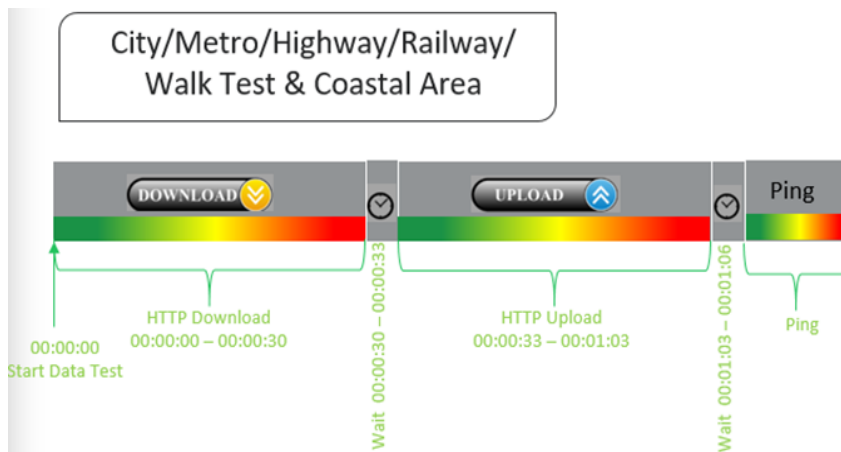


Figure-50: Data test script used in city/metro/railway/highway/walk test & coastal area

(d) Static Data(internet) testing

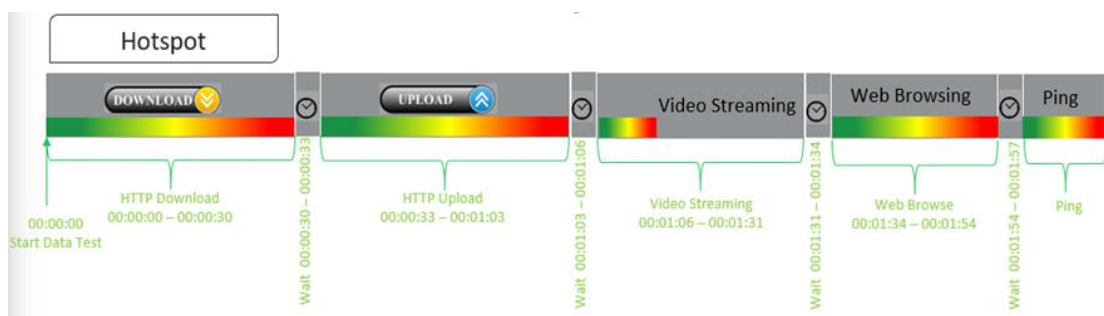


Figure-51: Data test script used at hotspot

- 5 Data iteration done at each hotspot location
- Min. 5 iteration made during the walk test.
- Web browsing duration mentioned above is for one web site only.
- Only 1 ping iteration (with 1000 Count) done at hotspot location.
- Download & Upload test performed at hotspot locations in 4G/3G/2G auto-selection also.

7.2 Appendix-II

7.2.1 Network Performance Parameters for Voice calls

Parameter Name	Definition
Call Setup Success Rate	<p>(i) Call Setup Success Rate is defined as the ratio of Established Calls to Call Attempts. 'Established Calls' mean the following events have happened in call setup:</p> <ul style="list-style-type: none"> (a) Call attempt is made (b) The signaling channel is allocated (c) The call is routed to the outwards path of the terminating network (d) An alert signal is received by caller in the form of ring back tone, busy tone, or an announcement. <p>CSSR = (Total Call Established/ Total Call Attempt) *100</p> <p>As per QoS Regulation 2024 benchmark value is >=98%</p>
Drop Call Rate	<p>Call drop represents the service provider network's ability to maintain a call once it has been successfully established. This parameter shall include both incoming calls and outgoing calls which, once they have been established and have an assigned traffic channel/ bearer, are dropped, or interrupted before their normal completion by the user, the cause of the early termination being within the service provider's network</p> <p>Drop Call Rate = (Total Call Drop/Total Call Established) *100</p> <p>As per QoS Regulation 2024 benchmark value is <=2%</p>
Call Setup Time	<p>Time taken from call initiate to call alerting/ringing.</p> <p>Call Setup Time = T2- T1</p> <p>T2- Ringing (VoLTE/VoNR) & Alerting (for WCDMA & GSM), T1- Invite (VoLTE/VoNR) & CM Service Request (for WCDMA & GSM)</p>
Voice Quality (MOS)	<p>Voice quality in mobile networks is measured with algorithms based on ITU-T P.863 (POLQA). The grading for Voice quality has been given as:</p> <p>Excellent: MOS ≥ 4 and < 5 Good : MOS ≥ 3 and < 4 Fair : MOS ≥ 2 and < 3 Poor : MOS ≥ 1 and < 2</p>
Handover Success Rate	<p>Handover Success Rate = Count of successful handovers (All Technology Handover combined) / Total count of Handover Attempt (All Technology Handover combined) *100</p> <p>Handover type which are considered- 2G Inter & Intra cell, 3G Soft & IRAT, 4G Inter & Intra frequency & SRVCC, 5G Inter & Intra frequency & 5G to 4G handovers.</p>
Silence Call	<p>A call which has ≥ 4 sec continuous RTP gap is considered as a Silence Call.</p> <p>Silence call rate = (count of silence call / Total calls established) *100</p> <p>If a call observes multiple silence count ≥ 4 sec in a particular established call it has been taken as one silent event.</p>

Jitter	<p>The inter arrival jitter is the difference in the relative transit time for two packets. The relative transit time is the difference between a packet's Real-time Transport Protocol (RTP) timestamp and the receiver's clock at the time of arrival, measured in the same units. If S_i is the RTP timestamp from packet i, and R_i is the time of arrival in RTP timestamps units for packet i, then for two packets i and j the inter-arrival jitter D can be expressed as:</p> $D(i,j) = (R_j - R_i) - (S_j - S_i)$ <p>The interarrival jitter is calculated continuously as each data packet i is received from source $SSRC_n$, using this difference D for that packet and the previous packet $i-1$ in order of arrival (not necessarily in sequence), according to the formula</p> $J(i) = J(i-1) + (D(i-1,i) - J(i-1))/16 \text{ or } 8$																																		
Downlink Packet Drop Rate	<p>Number of RTP (Real-time Transport Protocol) Packets lost divided by total RTP packet received (against each source_SSRC and sequence number) at call originating handset.</p> <p>This KPI is calculated from MOS call for packet call only (VoNR/VoLTE)</p>																																		
Uplink Packet Drop Rate	<p>Number of RTP (Real-time Transport Protocol) Packets lost divided by total RTP packet received (against each source_SSRC and sequence number) at call terminating handset. This KPI is calculated from MOS call for packet call only (VoNR/VoLTE).</p>																																		
Signal Strength	<p>Signal strength is the signal power level received by the wireless user.</p> <table><tr><th rowspan="2">Parameter Name</th><th rowspan="2">Technology</th><th colspan="4">Signal Strength (dBm)</th></tr><tr><th>Excellent</th><th>Good</th><th>Fair</th><th>Poor</th></tr><tr><td>Rx Level</td><td>GSM</td><td>0 to ≥ -65</td><td><-65 to ≥ -75</td><td><-75 to ≥ -85</td><td><-85 to min</td></tr><tr><td>RSCP</td><td>WCDMA</td><td>0 to ≥ -70</td><td><-70 to ≥ -80</td><td><-80 to ≥ -90</td><td><-90 to min</td></tr><tr><td>RSRP</td><td>LTE</td><td>0 to ≥ -80</td><td><-80 to ≥ -95</td><td><-95 to ≥ -110</td><td><-110 to min</td></tr><tr><td>SS_RSRP</td><td>NR</td><td>0 to ≥ -80</td><td><-80 to ≥ -95</td><td><-95 to ≥ -110</td><td><-110 to min</td></tr></table>	Parameter Name	Technology	Signal Strength (dBm)				Excellent	Good	Fair	Poor	Rx Level	GSM	0 to ≥ -65	<-65 to ≥ -75	<-75 to ≥ -85	<-85 to min	RSCP	WCDMA	0 to ≥ -70	<-70 to ≥ -80	<-80 to ≥ -90	<-90 to min	RSRP	LTE	0 to ≥ -80	<-80 to ≥ -95	<-95 to ≥ -110	<-110 to min	SS_RSRP	NR	0 to ≥ -80	<-80 to ≥ -95	<-95 to ≥ -110	<-110 to min
Parameter Name	Technology			Signal Strength (dBm)																															
		Excellent	Good	Fair	Poor																														
Rx Level	GSM	0 to ≥ -65	<-65 to ≥ -75	<-75 to ≥ -85	<-85 to min																														
RSCP	WCDMA	0 to ≥ -70	<-70 to ≥ -80	<-80 to ≥ -90	<-90 to min																														
RSRP	LTE	0 to ≥ -80	<-80 to ≥ -95	<-95 to ≥ -110	<-110 to min																														
SS_RSRP	NR	0 to ≥ -80	<-80 to ≥ -95	<-95 to ≥ -110	<-110 to min																														

Table-69: Network performance parameter and definition voice

7.2.2 Network Performance Parameters Data tests

Parameter Name	Definition
Download Speed (Mbps)	<p>The download speed is defined as the data transmission rate that is achieved for downloading a test file from a test server to a test device.</p> <p>Download Speed = Total bytes transferred during download / Total time for transfer</p> <ul style="list-style-type: none"> 80th percentile (upper range) & 20th percentile (lower range) value has been calculated for download throughput in dynamic drive and Hotspot combine data
Upload Speed (Mbps)	<p>The upload speed is the data transmission rate that is achieved for uploading a test file from a test device to a test server.</p> <p>Upload Speed = Total bytes transferred during upload / Total time for transfer.</p> <ul style="list-style-type: none"> 80th percentile (upper range) & 20th percentile (lower range) value has been calculated for upload throughput in dynamic drive and Hotspot combine data.

Download Session Setup Success Rate	(total download session established (successfully connected to server)/ total download session attempt) *100. This KPI has been calculated for Hotspot only.
Upload Session Setup Success Rate	(total upload session established (successfully connected to server)/ total upload session attempt)*100. This KPI need to report for Hotspot only.
Web Page Download Time	Web browsing test is used to measure performance in terms of opening a web/HTTP page. Time taken to open the web page successfully is considered as web browsing delay/web page download time.
Video Streaming Delay	The Video streaming delay is time taken from start of video transfer to First video frame displayed in player.
Latency	Latency is the time it takes for a small data set to be transmitted from a device to a server on the Internet and back to the same device again. The Latency is measured in milliseconds (ms). To calculate the one-way latency we just do half of the round-trip time. 50th percentile of one-way latency has been reported.
Jitter	Measure of variation in time in arrival of packets from a source to destination The consideration of packet delay jitter is considered by standard deviation of Inter Packet Delay Variation. If IPDV is used. By standard deviation is meant the average of standard deviation of IPDV on DL $IPDV(i) = D(i) - D(i-1)$ then Stdvs of IPDV is considered as jitter.
Packet Loss Rate	Number of packets lost out of total packet transferred during test. Packet loss rate = (Total packet lost / Total packet sent) *100 * Packet delay (using ping) >90 ms considered as packet loss and included in packet loss rate. * Packet loss rate is calculated based on ICMP *90th percentile for Packet loss rate has been reported in overall Hotspot performance summary.

Table-70: Network performance parameter and definition Data

Disclaimer: The observations presented above and, in the reports, represent the performance of the service providers on the area/route under test on the day/time of conducting the drive test and no inference whatsoever may be drawn regarding the quality of the telecom service by the service providers in the whole city/state/licensed service area.