



Operator Assisted Drive Test Report

Jaisalmer City

04th to 05th Dec'2024

By

TRAI Regional office Jaipur

Key Performance Indicators: All TSPs have met the Drop Call Rate (DCR) benchmark of 2% . All TSPs have met the Call Setup Success Rate (CSSR) of 95%.

The Operator Assisted Drive Test has been carried out by Regional Office, Jaipur with the help of Service Providers in Jaisalmer City and Hotspot from 09:00 AM to 8:00 PM on 04th to 05th Dec'2024. The drive test covered drive route of 75 KMs & 7 no hotspots over a period of 2 days. Approximately 140 calls were made for each of the networks: three 2G networks, one 3G networks and three LTE networks covering four TSPs.

Overview

Voice Summary

Data Summary

Overview

Regional Office, TRAI Jaipur conducted Operator Assisted Drive Test on 04th to 05th Dec'2024 covering Jaisalmer city. The performance of Airtel, BSNL, Vodafone Idea and Jio was monitored across various technologies (2G, 3G and 4G). The test results obtained from these drive tests were utilized to assess the network quality for Voice and Data services.

Voice: Coverage, Quality, Handover Success Rate, Call Setup Success Rate, Drop Call Rate and Block Call Rate.

Data: Download Throughputs,

Drive Test Details :

Voice Tests: Calls were made for 90 sec duration with a wait time of 10 sec between calls in all technologies. The drive test covered a drive route of approximately 74 KMs. Approximately 140 calls were made for each of the Jio networks: three 2G (Lock Mode) networks, one 3G (Dual mode) networks and three VoLTE networks covering 4 unique TSPs.

Data Tests:

Dynamic data test was conducted for 74 kms for download throughput in all technologies.
2G – measurement – UE Locked in 2G file size- 500KB

3G – measurement – UE in 3G File Size- 20MB

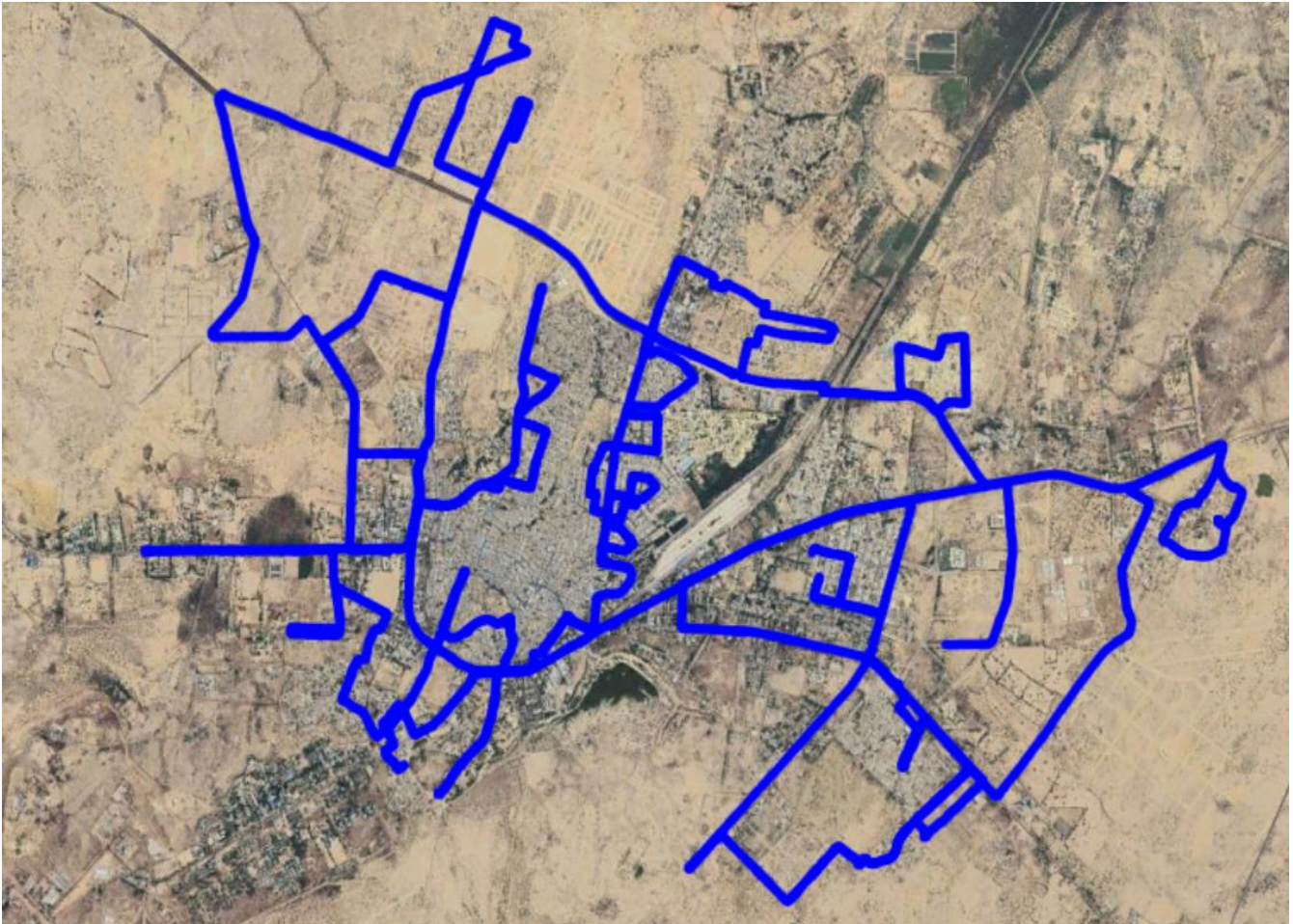
4G – measurement – UE in LTE File Size- 40MB

Static data tests on 7 hotspots

1. Collectrate Jaisalmer
2. Hanuman Circle Jaisalmer
3. Poonam Singh Stadium Jaisalmer
4. Neeraj Bus Stand Jaisalmer
5. Railway Station Jaisalmer
6. Airforce Circle Jaisalmer
7. Gadisar Circle Jaisalmer

Service	Specifications
Download	2G (Locked) - 500KB, 3G (Dual) - 20 MB, 4G (Free) - 40 MB
Upload	2G (Locked) - 100KB, 3G (Dual) - 5 MB, 4G (Free) - 10 MB
Web Browsing	3 links of e/m commerce website www.amazon.in, www.flipkart.com and PayTm
Latency	32 Bytes on www.google.com

Voice & Dynamic Data Test Drive Route



Date	Test Scenario	Area to be Covered
04-Dec-24	2G/3G/4G Voice and 3G/4G Dynamic Data	Starting point:Collectorate & Hanuman circle,Priya Hospital,Mausam Bibhag Colony, BSF Sector North, Laxmi Chand Sanwal Colony,Jethwai Road,Deendayal Colony,Rewant Singh Dhani, Chocki Dhani,Babar Magra Kacchi Basti,DNP Colony,Air Port Road,Union Circle,Indra Colony, Railway station, Gadisar Circle, Nagar Palika,Bera Road, Air Force Main Gate,Vyas Colony,Neeraj Bus Stand,Fort Road,Air force Circle,Police line,Geeta Ashram,Malka Prol,Gaffur bhatta, Hinglaj Marg, RP Colony,RIICO Area,Darji Pada,Gandhi Colony.
05-Dec-24	Hot Spots- 2G/3G/4G Static Data Tests	Static Hotspot – 1) Collectorate Jaisalmer, 2) Hanuman Circle Jaisalmer, 3) Poonam Singh Stadium Jaisalmer, 4) Neeraj Bus Stand Jaisalmer, 5) Railway Station Jaisalmer, 6) Airforce Circle Jaisalmer, 7) Gadisar Circle Jaisalmer.

Data Service Test - Static Locations



Hotspot Locations

Location 1:- Collectrate Jaisalmer

Location 2:-Hanuman Circle Jaisalmer

Location 3:-Poonam Singh Stadium Jaisalmer

Location 4:-Neeraj Bus Stand Jaisalmer

Location 5:-Railway Station Jaisalmer

Location 6:-Airforce Circle Jaisalmer

Location 7:-Gadisar Circle Jaisalmer

QoS compliance of the TSPs in Jaisalmer City & Nearby area
for Voice across technologies 2G/3G/4G-VoLTE:

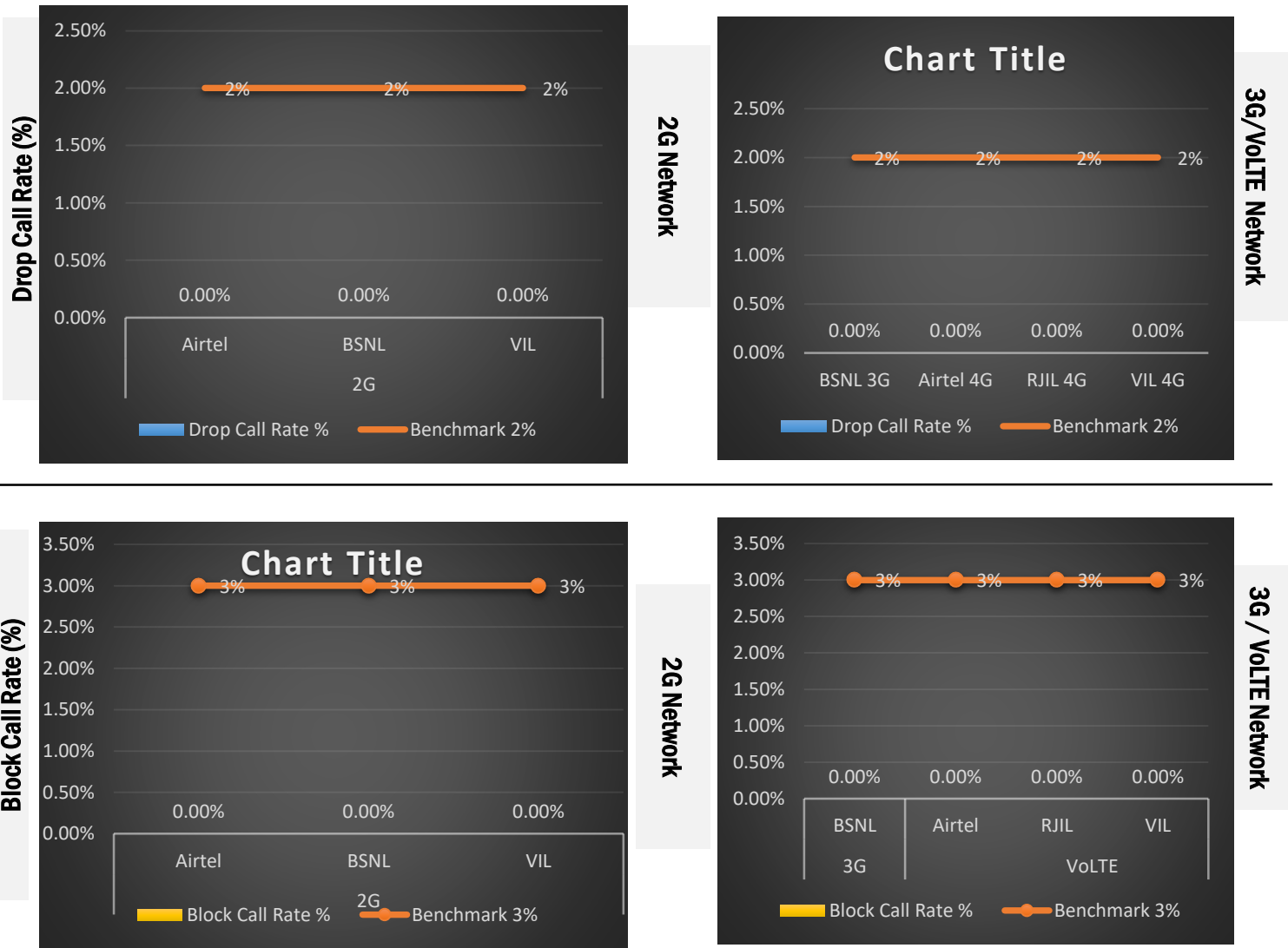


Chart Title

2.50%

2.00%

1.50%

1.00%

0.50%

0.00%

2%

2%

2%

2%

0.00%

0.00%

0.00%

0.00%

BSNL 3G

Airtel 4G

RJIL 4G

VIL 4G

Drop Call Rate %

Benchmark 2%

3G / VoLTE Network

Block Call Rate (%)

3.50%

3.00%

2.50%

2.00%

1.50%

1.00%

0.50%

0.00%

3%

3%

3%

0.00%

0.00%

0.00%

Airtel

BSNL

VIL

2G

Block Call Rate %

Benchmark 3%

2G Network

Chart Title

3.50%

3.00%

2.50%

2.00%

1.50%

1.00%

0.50%

0.00%

3%

3%

3%

3%

0.00%

0.00%

0.00%

0.00%

BSNL 3G

Airtel VoLTE

RJIL VoLTE

VIL VoLTE

Block Call Rate %

Benchmark 3%

3G / VoLTE Network

KPIs	2G			3G	4G		
	Airtel	BSNL	VIL	BSNL	Airtel	RJIL	VIL
Drop Call Rate %	0.00%	0.00%	0.00%	0.00%	0.00%	0.00%	0.00%
Block Call Rate %	0.00%	0.00%	0.00%	0.00%	0.00%	0.00%	0.00%

- a) All TSPs have met the 2% QOS benchmark of Drop Call Rate (DCR%).
- b) Call Block Rate (CBR%) benchmark of 3% was achieved by all TSP's.

Voice Calls

Key Observations

Coverage

a) Percentage of coverage samples for 2G \geq -85 dBm.

TSPs	2G		
	Airtel	BSNL	VIL
Coverage %	72.42%	93.77%	67.91%

b) Percentage of coverage samples for 3G \geq -90 dBm

TSPs	3G
	BSNL
Coverage %	99.75%

c) Percentage of coverage samples for LTE \geq -110 dBm.

TSPs	VoLTE		
	Airtel	JIO	VIL
Coverage %	99.86%	99.84%	97.37%

d) Percentage of time spent on 3G/4G network

TSPs	3G	VoLTE		
	BSNL	Airtel	JIO	VIL
Time spent on 3G/4G Network %	13.61%	100%	100%	99.92%

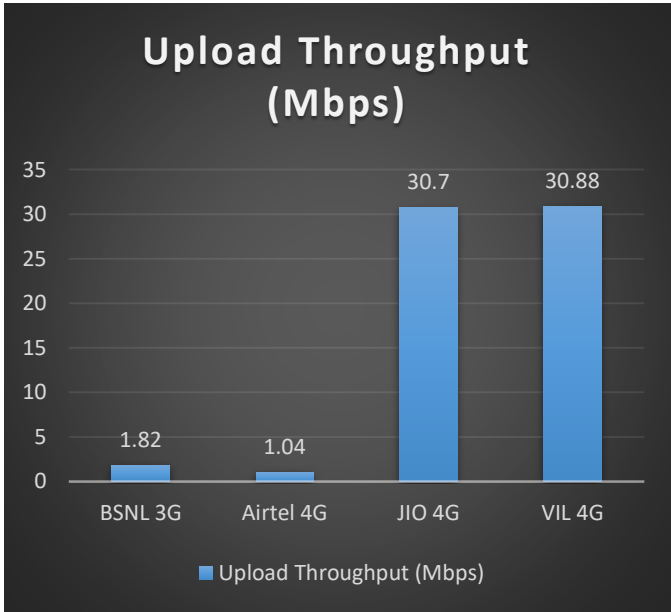
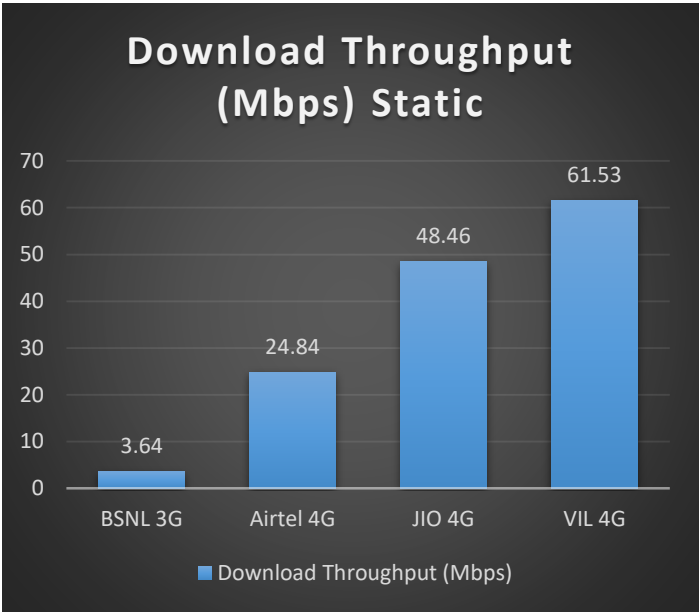
Data Services Static

Key Observations

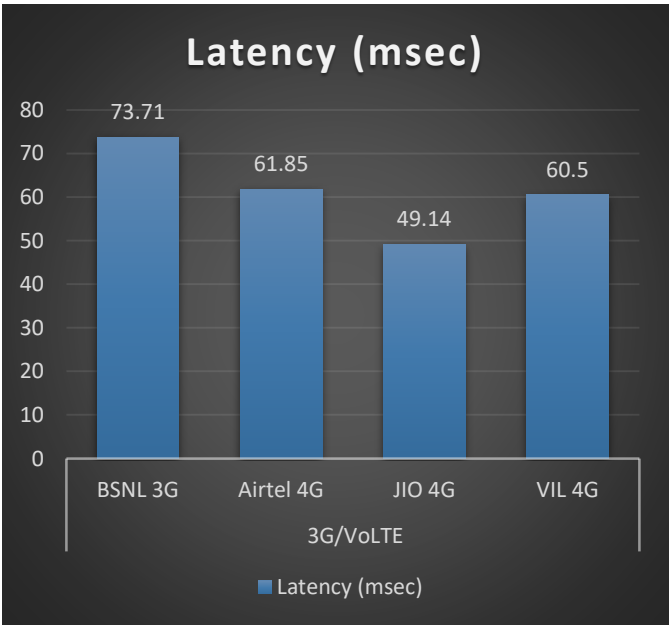
Data was tested at 5 locations .Following services were tested: Data Download/Upload, Latency (www.google.com), and Web browsing (Flipkart, Amazon, Paytm)

Data Download and Upload Performance Static (Mbps)

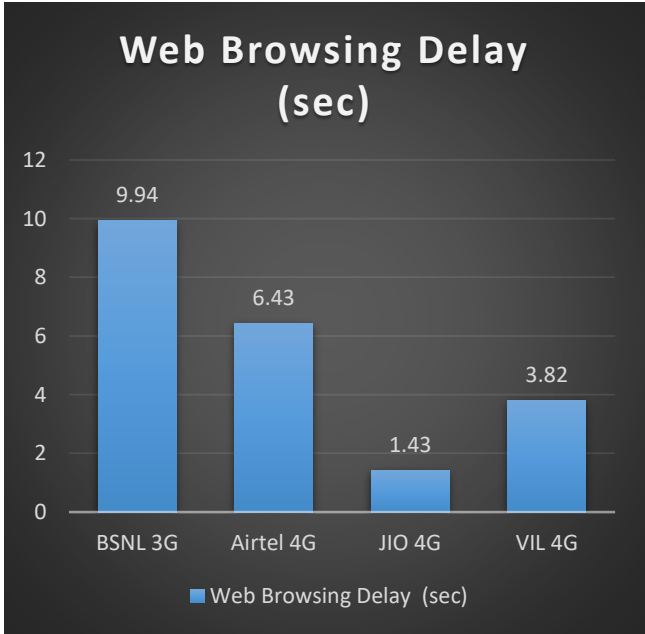
3G/4G/ Network:



Latency (ms)



Web Browsing (Sec)



Data Services Static	3G / 4G			
	BSNL 3G	Airtel 4G	JIO 4G	VIL 4G
Download Throughput (Mbps)	3.64	24.84	48.46	61.53
Upload Throughput(Mbps)	1.82	1.04	30.7	30.88
Video Streaming Delay (sec)	NA	0	0.39	1.58
Web Browsing Delay (sec)	9.94	6.43	1.43	3.82
Latency (msec)	73.71	61.85	49.14	60.5

Data Services Dynamic

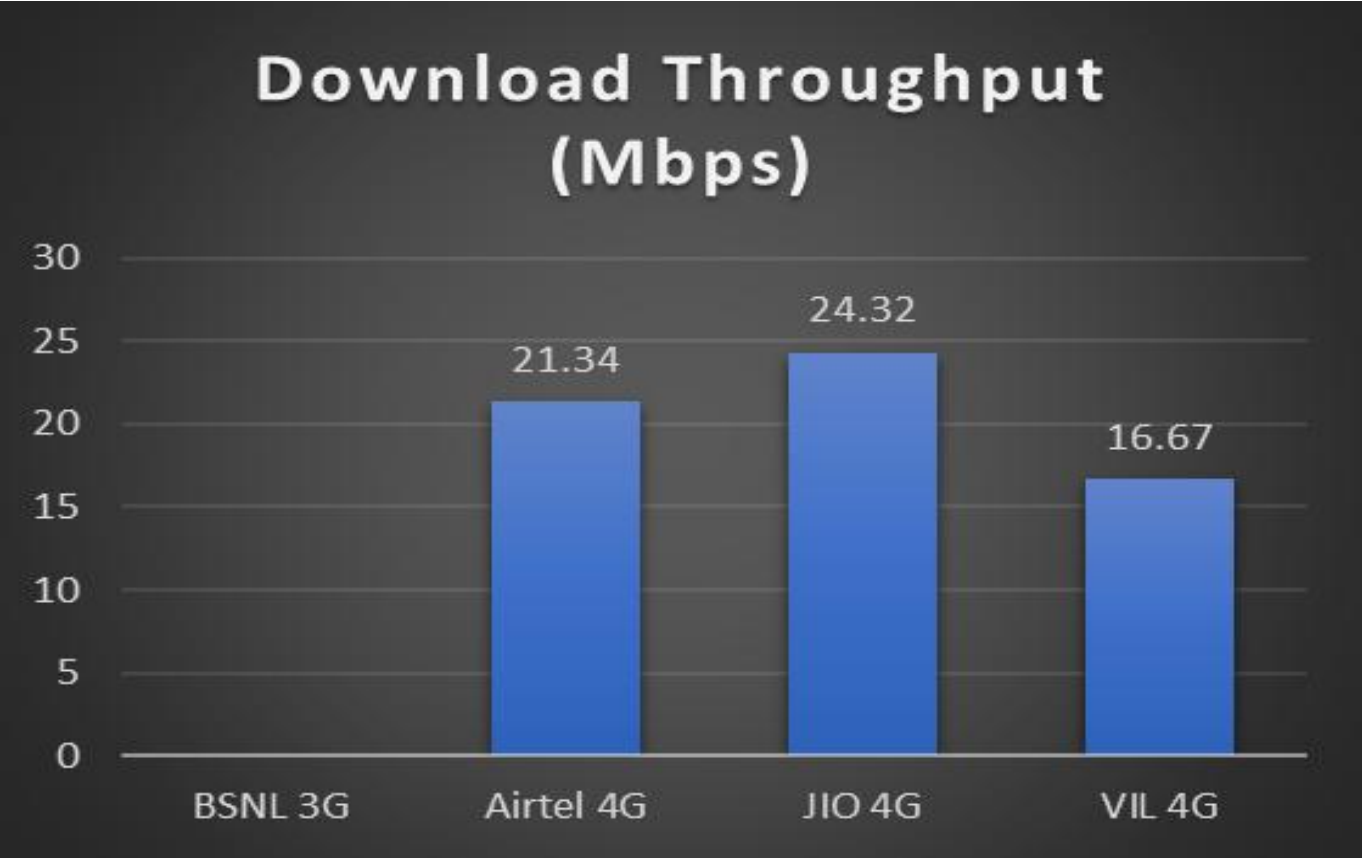
Key Observations

Dynamic Data was tested for whole voice route. Download Throughput was tested.

Data Download Performance (kbps) - Dynamic

3G/4G/ Network:

Data Services Dynamic	3G/VoLTE			
	BSNL 3G	Airtel 4G	JIO 4G	VIL 4G
Download Throughput (Mbps)	NA	21.34	24.32	16.67



Voice Call	2G		
	Airtel	BSNL	VIL
Call Attempt	131	128	145
Blocked Call Rate (%)	0%	0%	0%
CSSR% (Accessibility)	100%	100%	100%
Drop Call Rate (%)	0%	0%	0%
Mobility HOSR (%)	96.51%	100%	96.4%
Rx Quality (%)	95.67%	98.37%	95.01%
Average CST Sec	3.52	3.23	2.91

Voice Call	3G/VoLTE			
	BSNL 3G	Airtel VoLTE	JIO VoLTE	VIL VoLTE
Call Attempt	89	133	141	150
Blocked Call Rate (%)	0%	0%	0%	0%
CSSR% (Accessibility)	100%	100%	100%	100%
Drop Call Rate (%)	0%	0%	0%	0%
Mobility HOSR (%)	100%	99.57%	99.49%	100%
Rx Quality (%)	95.95%	94.02%	91.05%	96.31%
Average CST Sec	4.59	1.85	0.62	0.32

<u>Hanuman circle</u>	3G	4G		
	BSNL	Airtel	JIO	VIL
Download Throughput (mbps)	3.82	30.21	49.08	31.89
Upload Throughput (mbps)	1.68	2.62	35.81	30.41
Video Streaming Delay (Secs.)	NA	0	0.34	1.6
Web Browsing Delay (sec)	7.9	6.07	1.5	2.05
Latency (msec)	59	51.7	50	53

Railway station	3G	4G		
	BSNL	Airtel	JIO	VIL
Download Throughput (mbps)	2.02	53.85	48.05	52.02
Upload Throughput (mbps)	1.94	1.07	38.46	25.52
Video Streaming Delay (Secs.)	NA	0	0.34	1.57
Web Browsing Delay (sec)	8.6	5.42	1.43	3.66
Latency (msec)	67	70.83	51	71

<u>Neeraj Bus stand</u>	3G	4G		
	BSNL	Airtel	JIO	VIL
Download Throughput (mbps)	4.68	27.14	42.94	68.72
Upload Throughput (mbps)	1.88	0.74	13.99	36.43
Video Streaming Delay (Secs.)	NA	0	0.33	1.57
Web Browsing Delay (sec)	11.4	7.34	1.55	3.76
Latency (msec)	73	61.87	46	50

<u>Collectorate Office</u>	3G	4G		
	BSNL	Airtel	JIO	VIL
Download Throughput (mbps)	4.51	19.85	61.12	86.85
Upload Throughput (mbps)	1.93	0.71	24.56	33.36
Video Streaming Delay (Secs.)	NA	0	0.32	1.58
Web Browsing Delay (sec)	9.5	6.1	1.5	3.82
Latency (msec)	62	63.33	60	60

<u>Airforce circle</u>	3G	4G		
	BSNL	Airtel	JIO	VIL
Download Throughput (mbps)	3.73	8.35	61.55	58.77
Upload Throughput (mbps)	1.92	0.64	34.3	22.65
Video Streaming Delay (Secs.)	NA	0	0.38	1.62
Web Browsing Delay (sec)	8.5	7.27	1.32	3.85
Latency (msec)	94	70.32	43	53

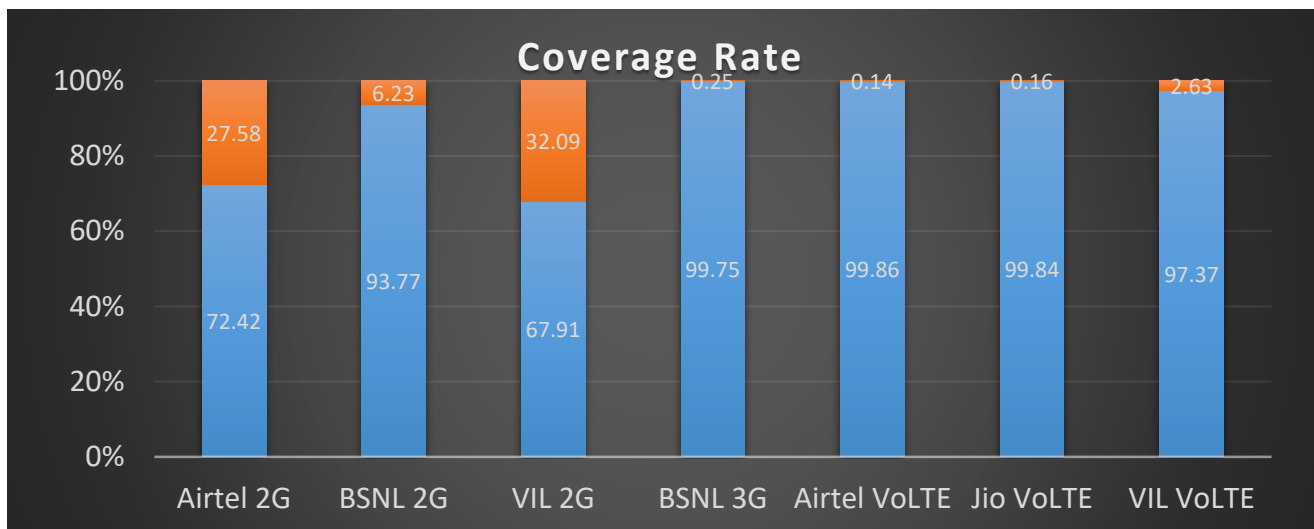
<u>Gadisar</u>	3G	4G		
	BSNL	Airtel	JIO	VIL
Download Throughput (mbps)	2.39	20.11	33.47	48.89
Upload Throughput (mbps)	1.71	0.74	35.9	31.26
Video Streaming Delay (Secs.)	NA	0	0.32	1.52
Web Browsing Delay (sec)	8.9	6.62	1.31	3.89
Latency (msec)	67	70.93	51	56

Poonam stadium	3G	4G		
	BSNL	Airtel	JIO	VIL
Download Throughput (mbps)	4.33	62.69	43.03	54.18
Upload Throughput (mbps)	1.73	13.99	31.89	36.07
Video Streaming Delay (Secs.)	NA	0	0.67	1.62
Web Browsing Delay (sec)	14.8	5.42	1.44	3.92
Latency (msec)	94	48.1	43	73

Coverage Details

RF Coverage relates to the geographical footprint within the system that has sufficient RF signal strength to provide for a call session. The Coverage rate is calculated on the basis of % of samples in which the Rx level \geq -85 dBm, RSCP is \geq -90 dBm & RSRP \geq -110dBm. The details are as follows.

TSP	Coverage Rate %
Airtel 2G	72.42%
BSNL 2G	93.77%
VIL 2G	67.91%
BSNL 3G	99.75%
Airtel VoLTE	99.86%
Jio VoLTE	99.84%
VIL VoLTE	97.37%

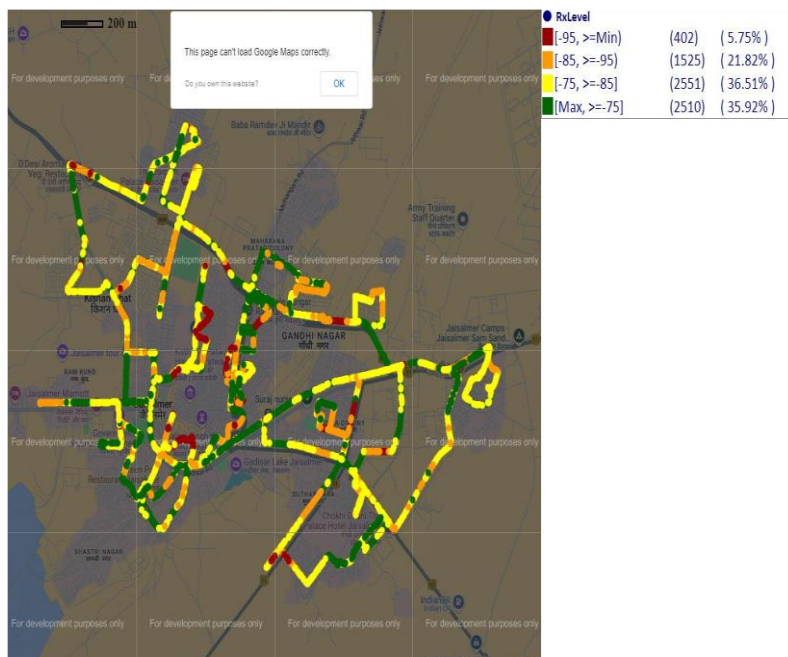


Coverage Details

TSP-AIRTEL

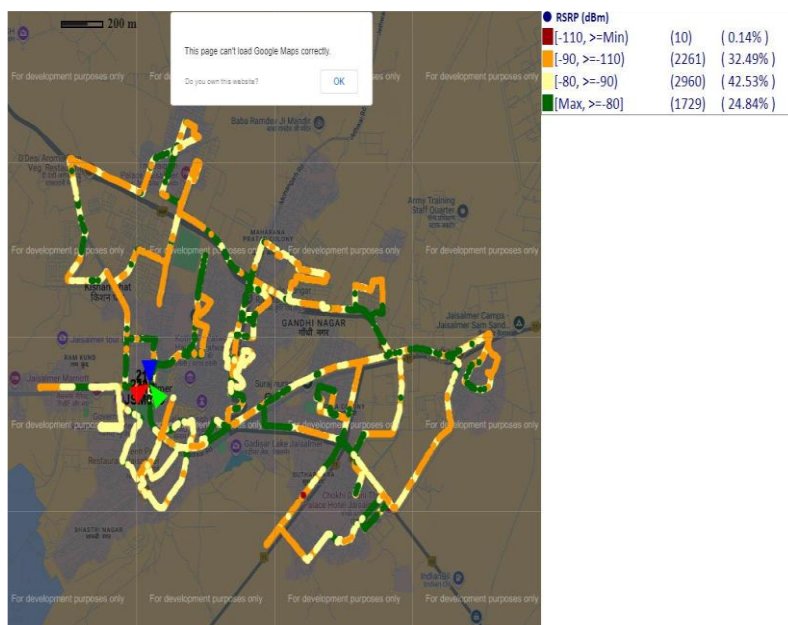
2G

Technology	Coverage %
2G	72.42%
VoLTE	99.86%



2G			
Overall RxLevel	# Samples	% PDF	Legends
[Max, >=-75]	2510	35.92%	■
[-75, >=-85)	2551	36.51%	■
[-85, >=-95)	1525	21.82%	■
[-95, >=Min)	402	5.75%	■
Total	6988	100%	

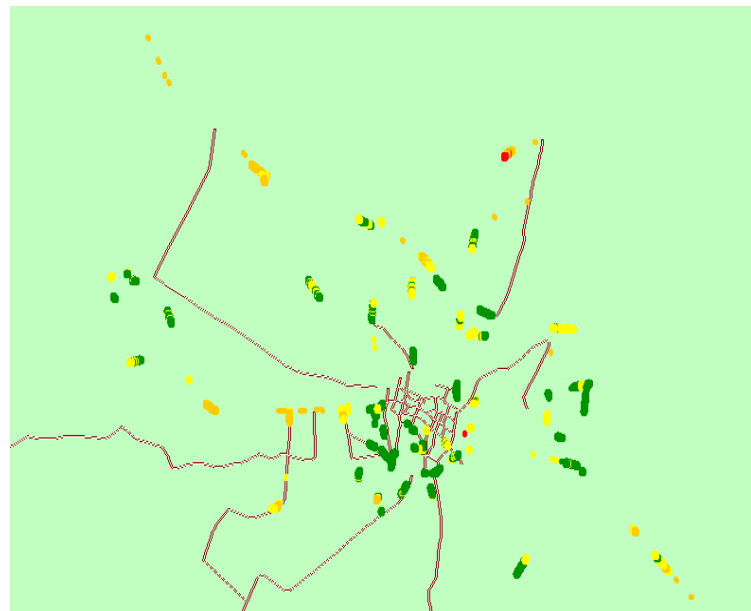
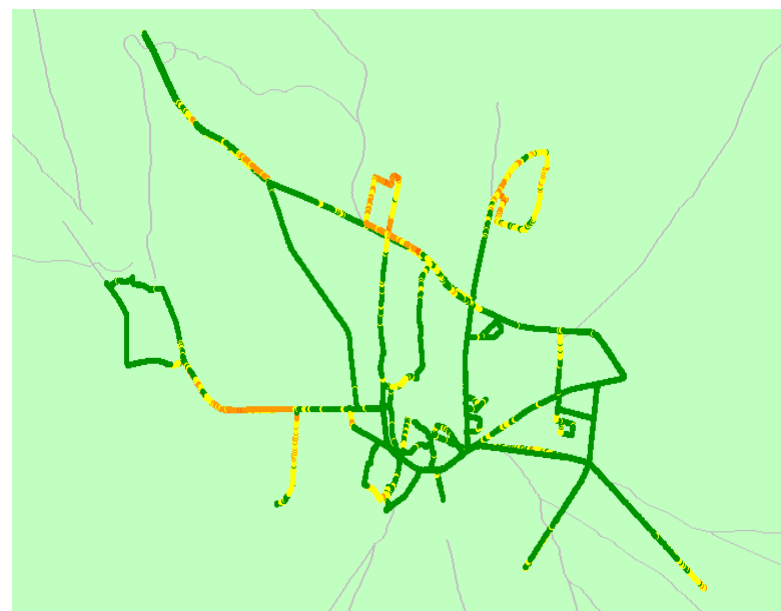
VoLTE



VoLTE /5G			
Overall RSRP	# Samples	% PDF	Legends
[Max, >=-80]	1729	24.84%	■
[-80, >=-90)	2960	42.53%	■
[-90, >=-110)	2261	32.49%	■
[-110, >=Min)	10	0.14%	■
Total	6960	100%	

TSP- BSNL

2G	Technology	Coverage %	3G
	2G	93.77%	
	3G	99.75%	

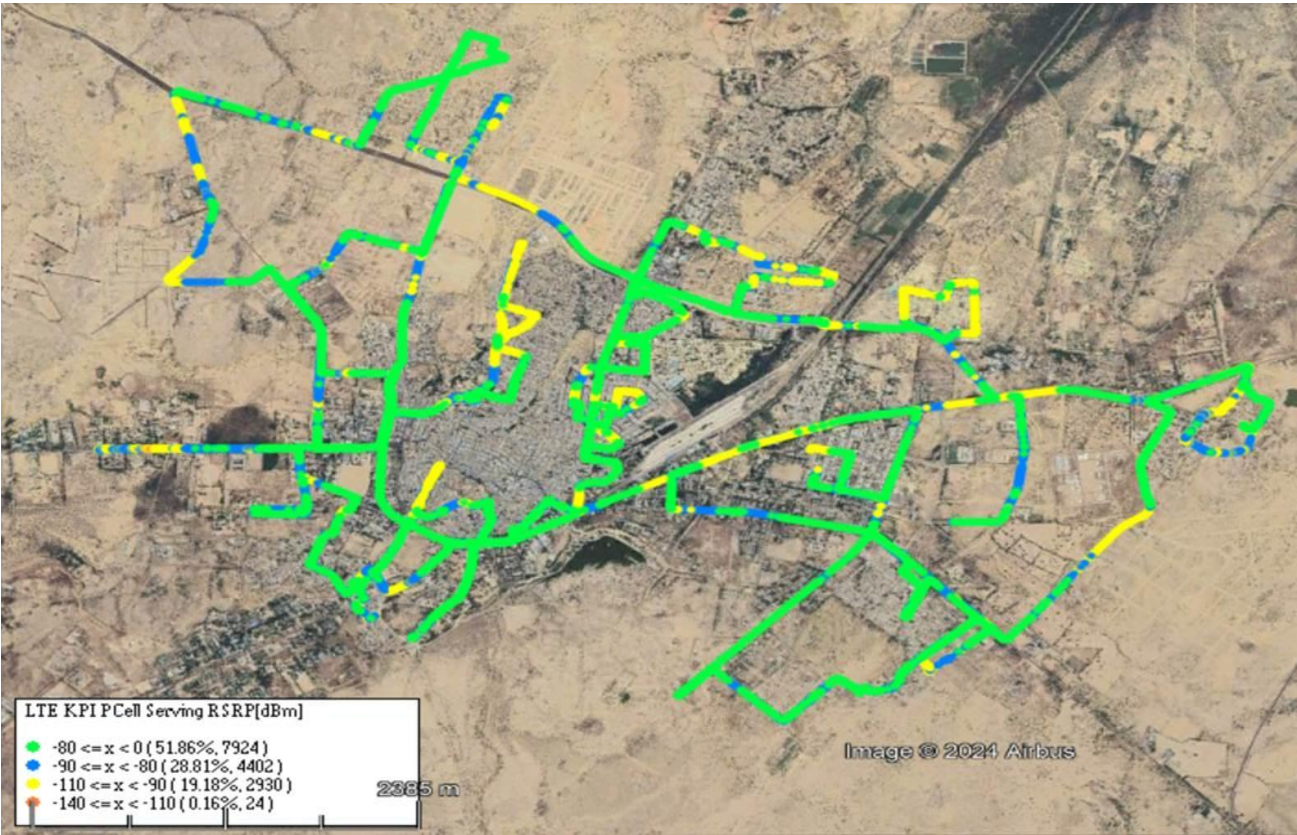


2G			
Overall RxLevel	# Samples	% PDF	Legends
[Max, >=-75]	10352	76.74%	
[-75, >=-85)	2297	17.03%	
[-85, >=-95)	760	5.64%	
[-95, >=Min)	80	0.59%	
Total	13489	100%	

3G			
Overall RSCP	# Samples	% PDF	Legends
[Max, >=-80]	1175	58.64%	
[-80, >=-90)	606	30.21%	
[-90, >=-110)	218	10.90%	
[-110, >=Min)	5	0.25%	
Total	2673	100%	

JIO

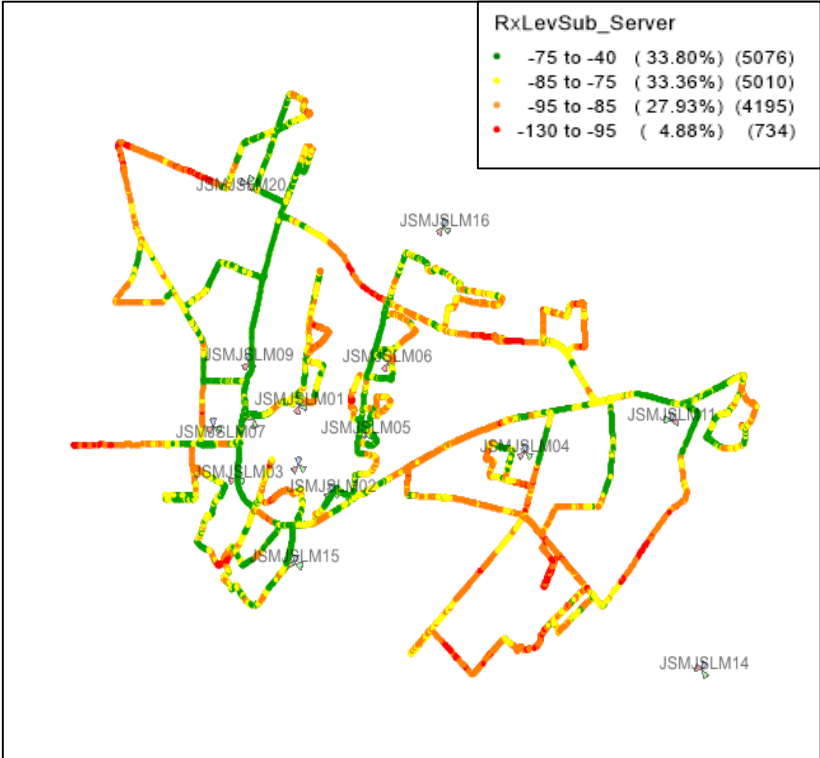
Technology	Coverage %
VoLTE	99.84%



VoLTE			
Overall RSRP	# Samples	% PDF	Legends
[Max, >=-80]	7924	51.86%	
[-80, >=-90)	4402	28.81%	
[-90, >=-110)	2930	19.17%	
[-110, >=Min)	24	0.16%	
Total	15280	100%	

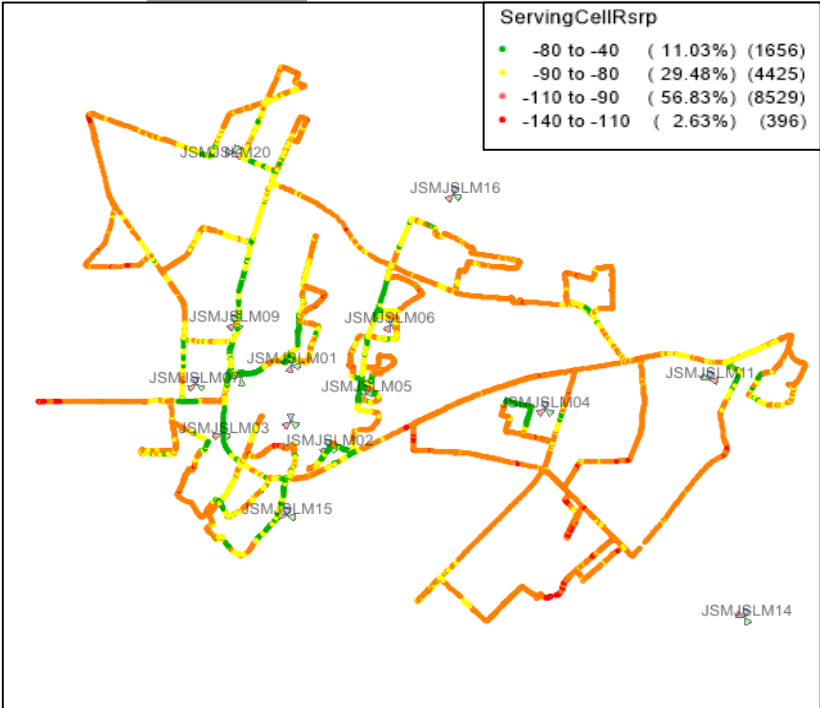
VIL

2G	Technology	Coverage Rate %
	2G	67.19%
	VoLTE	97.37%



2G			
Overall RxLevel	# Samples	% PDF	Legends
[Max, >=-75]	5076	33.80%	
[-75, >=-85)	5010	33.37%	
[-85, >=-95)	4195	27.94%	
[-95, >=Min)	734	4.89%	
Total	15015	100%	

VoLTE

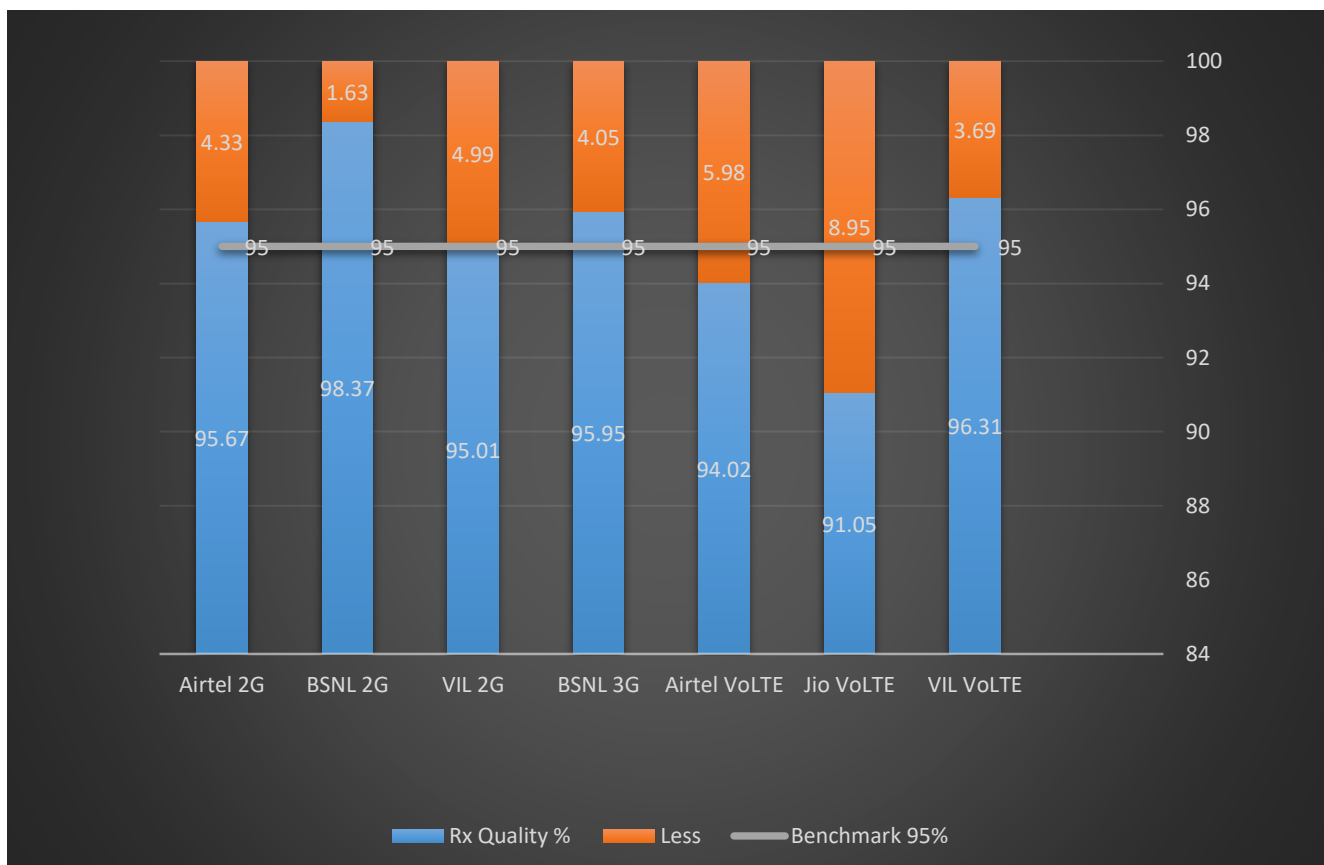


VoLTE /5G			
Overall RSRP	# Samples	% PDF	Legends
[Max, >=-80]	1656	11.04%	
[-80, >=-90)	4425	29.49%	
[-90, >=-110)	8529	56.83%	
[-110, >=Min)	396	2.64%	
Total	15006	100%	

II. Quality Details

For measuring voice quality, as per the QoS norms, RxQual ≤ 5 for GSM TSPs, EcNo ≥ -14 dBm for 3G TSP and SINR > 0 in case of VoLTE is considered to be good, where as quality beyond this benchmark is considered to be bad. The benchmark should usually be $\geq 95\%$.

<u>TSP</u>	Rx Quality %
Airtel 2G	95.67%
BSNL 2G	98.37%
VIL 2G	95.01%
BSNL 3G	95.95%
Airtel VoLTE	94.02%
Jio VoLTE	91.05%
VIL VoLTE	96.31%

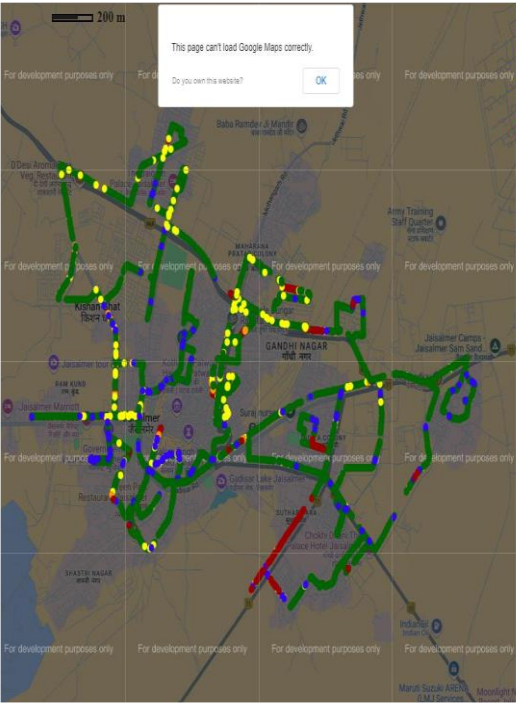


II. Quality Details

Airtel

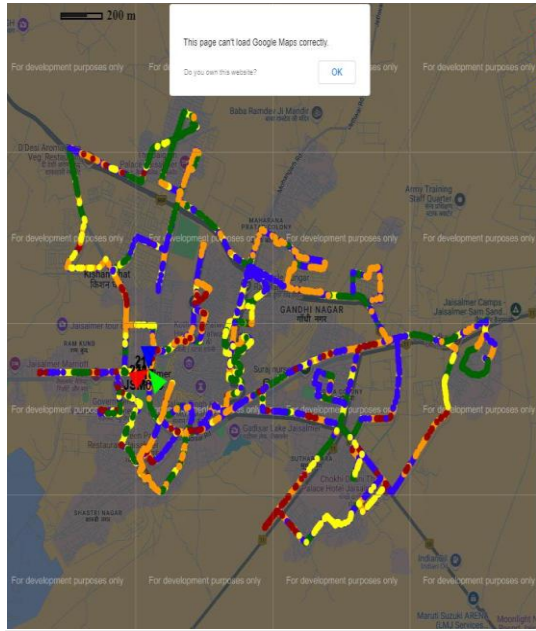
2G

Technology	Rx Quality %
2G	95.67%
VoLTE	94.02%



Overall Rx Quality	# Samples	% PDF	Legends
(Min, <=2)	5300	85.70%	
(2, <=3)	372	6.01%	
(3, <=4)	140	2.26%	
(4, <=5)	105	1.70%	
(5, <=Max)	268	4.33%	
Total	6185	100%	

VoLTE

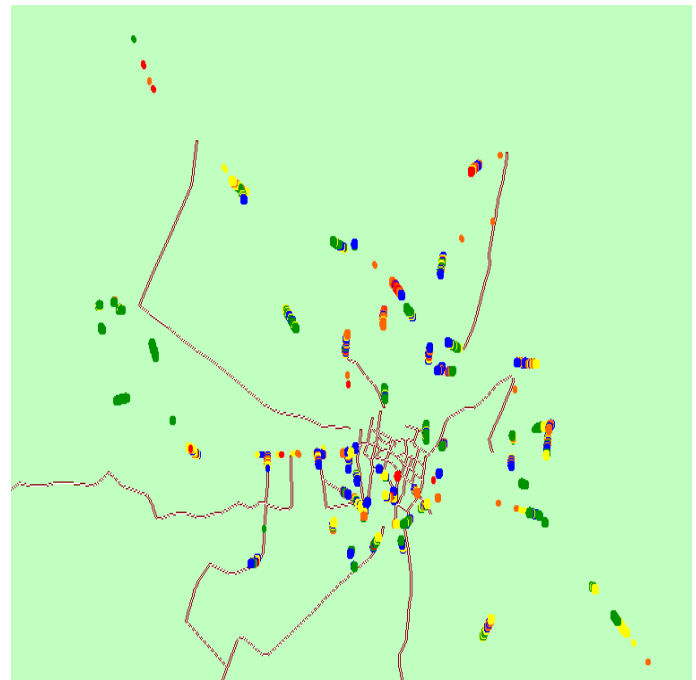
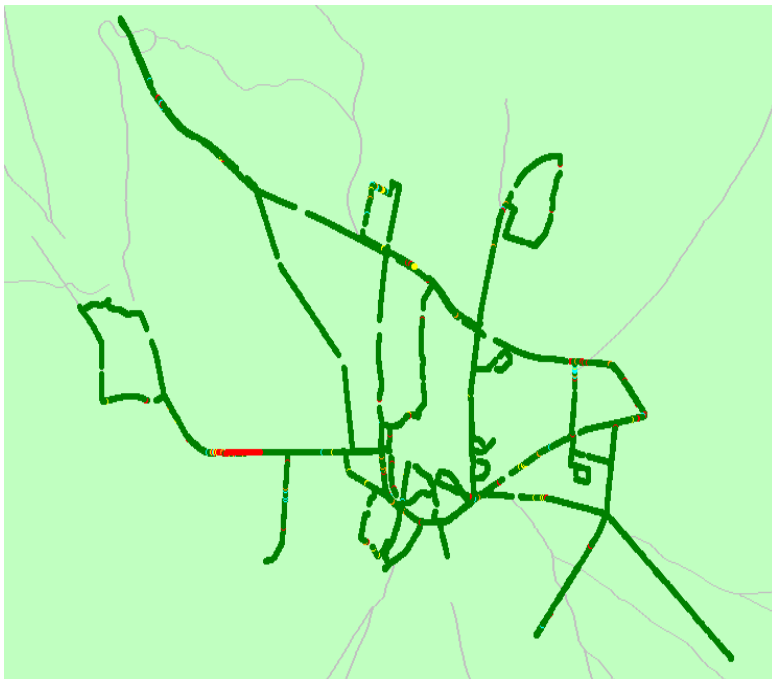


Overall SINR	# Samples	% PDF	Legends
(Min, <=0)	416	5.98%	
(0, <=5)	1631	23.44%	
(5, <=10)	2066	29.69%	
(10, <=15)	1333	19.16%	
(15, <=Max)	1513	21.73%	
Total	6959	100%	

II. Quality Details

BSNL

	Technology	Rx Quality %	
2G	2G	98.39%	3G
	3G	95.95%	



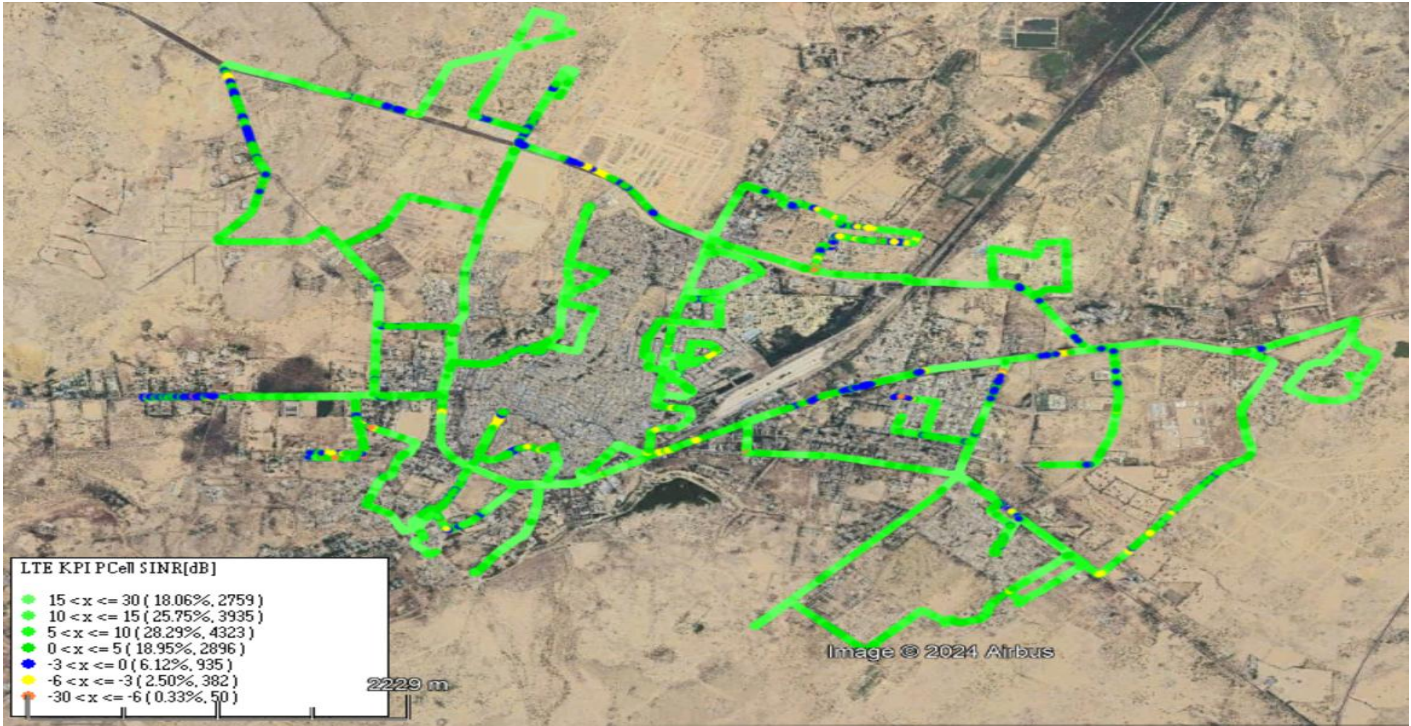
Overall Rx Quality	# Samples	% PDF	Legends
(Min, <=2)	11458	96.62%	
(2, <=3)	81	0.68%	
(3 , <=4)	82	0.70%	
(4 , <=5)	44	0.37%	
(5 , <=Max)	193	1.63%	
Total	11858	100%	

Overall Ec/No	# Samples	% PDF	Legends
(Max, <=-6)	599	29.86%	
(-6, <=-9)	489	24.41%	
(-9, <=-11)	517	25.79%	
(-11, <=-14)	319	15.89%	
(-14, <= Min)	81	4.05%	
Total	2005	100%	

For measuring voice quality, as per the QoS norms, RxQual <=5 for GSM TSPs, EcNo >= -14 dBm for 3G TSP sand SINR >0 in case of VoLTE is considered to be good, where as quality beyond this benchmark is considered to be bad. The benchmark should usually be ≥ 95%.

JIO

Technology	Rx Quality %
VoLTE	91.05%



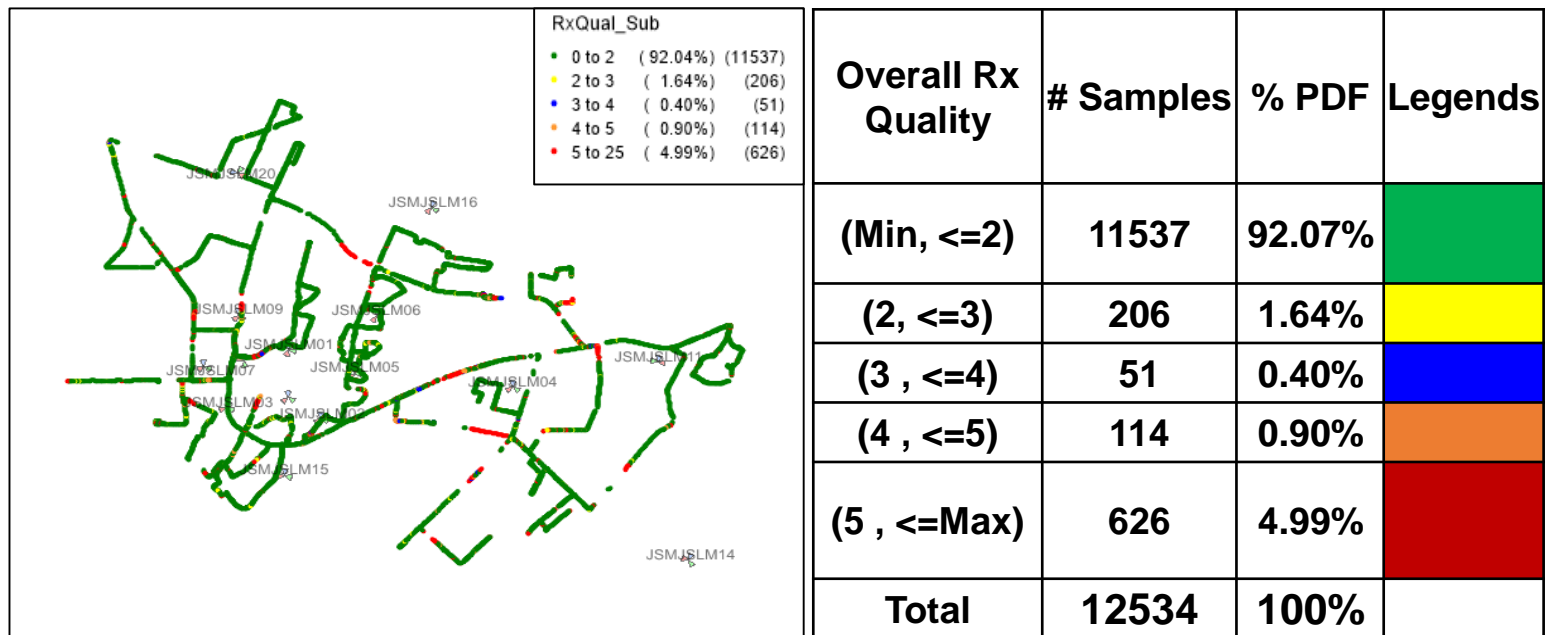
Overall SINR	# Samples	% PDF	Legends
(Min, <=-6)	50	0.33%	
(-6, <=-3)	382	2.50%	
(-3, <=0)	935	6.12%	
(0, <=5)	2896	18.95%	
(5, <=10)	4323	28.29%	
(10, <=15)	3935	25.75%	
(15, <=Max)	2759	18.06%	
Total	15280	100%	

II. Quality Details

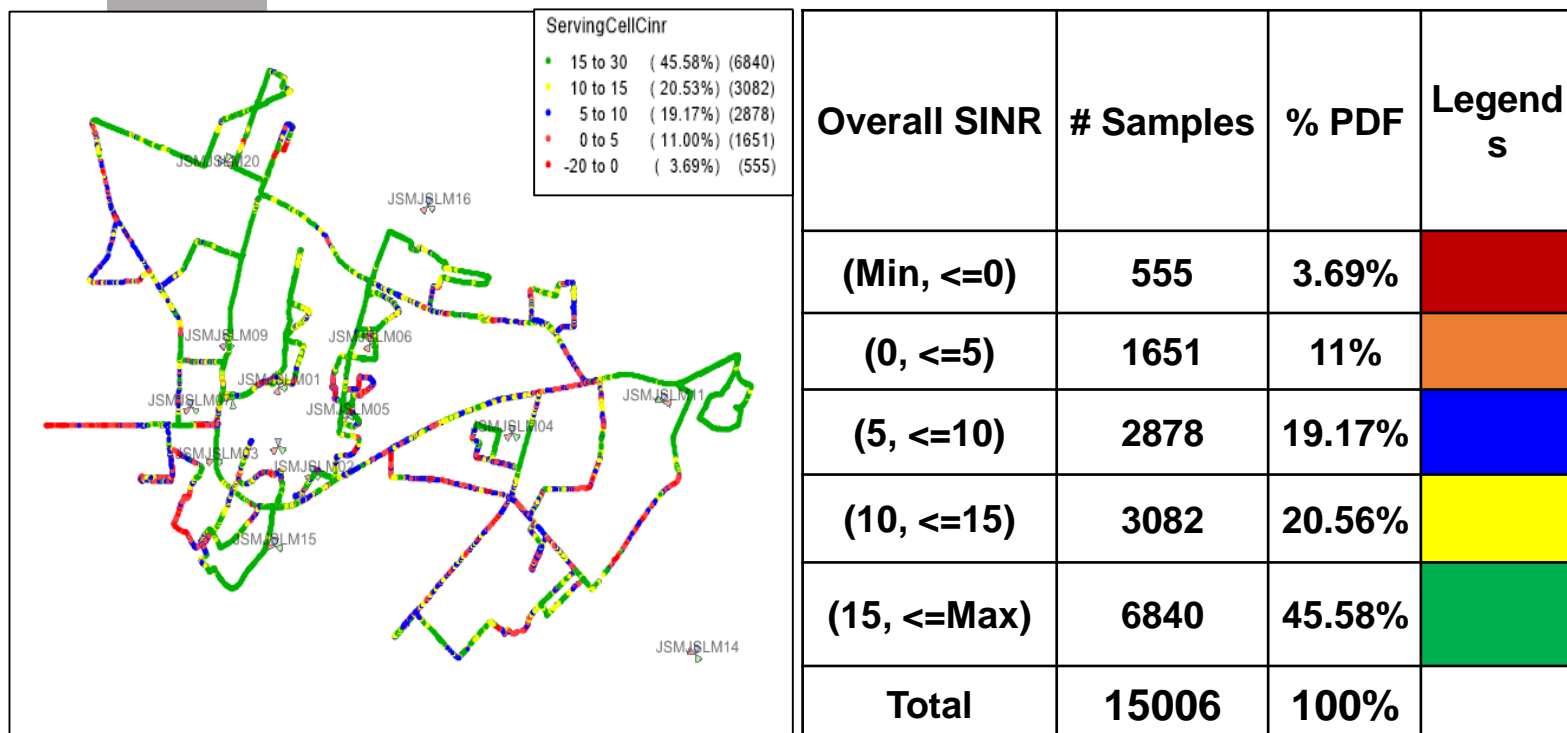
VIL

Technology	Rx Quality %
2G	95.01%
4G	96.31%

2G



VoLTE



III. Technology Details

TSP	% of Time Spent on 3G/VoLTE
BSNL 3G	13.61%
Airtel VoLTE	100%
Jio VoLTE	100%
VIL VoLTE	99.92%

