



**TELECOM REGULATORY AUTHORITY OF INDIA**

*Independent Drive Test Report*

*UP West LSA*

*April 2026*

Contents

- 1. Introduction ..... 3
- 2. Executive Summary (LSA) ..... 3
  - 2.1 Drive test details ..... 3
  - 2.2 Drive test routes ..... 4
  - 2.3 Summary of areas covered ..... 4
  - 2.4 Telecom service providers detected frequency bands ..... 5
  - 2.5 Performance against key QoS parameters ..... 5
- 3. QoS performance analysis-LSA level ..... 6
  - 3.1 Overview ..... 7
  - 3.2 Voice performance ..... 7
  - 3.3 Data performance ..... 10
- 4. Detailed QoS performance analysis ..... 13
  - 4.1 Overview ..... 13
  - 4.2 City ..... 13
    - 4.2.1 Drive test route ..... 13
    - 4.2.2 Areas covered ..... 13
    - 4.2.3 Voice performance ..... 13
    - 4.2.4 Data performance ..... 22
  - 4.3 Hotspots ..... 26
    - 4.3.1 Locations ..... 26
    - 4.3.2 Hotspot covered ..... 26
    - 4.3.3 Voice performance ..... 26
    - 4.3.4 Data performance (Auto-selection mode 5G/4G/3G/2G) ..... 29
    - 4.3.5 Data performance (5G Only & 4G Only Download & Upload Speed) ..... 34
  - 4.4 Walk Test ..... 38
    - 4.4.1 Walk test locations ..... 38
    - 4.4.2 Walk Test Covered ..... 38
    - 4.4.3 Voice Performance ..... 38
    - 4.4.4 Data Performance ..... 39
- 5. Voice & Data Key findings ..... 40
  - 5.1 Overall Voice ..... 40
  - 5.2 Overall Data ..... 40
  - 5.3 Operator wise Key Findings ..... 41
- 6. Annexure ..... 45

6.1 Route wise coverage map .....	45
6.1.1 City .....	45
7. Appendix .....	51
7.1 Appendix-I .....	51
7.1.1 Drive test setup .....	51
7.1.2 Drive test Methodology .....	53
7.2 Appendix-II .....	55
7.2.1 Network Performance Parameters for Voice calls .....	55
7.2.2 Network Performance Parameters Data tests .....	56

## 1. Introduction

TRAI Act, 1997 mandates the Authority to ensure the services delivered through various telecommunications networks meet the required quality standards prescribed, to protect the interest of the consumers of telecommunication services. TRAI is also responsible for conducting the periodical audit of such services provided by the service providers so as to protect the interests of the consumers of telecommunications services.

Accordingly, TRAI has engaged M/s RedMango Analytics Pvt. Ltd. to undertake assessment of Quality of Service of mobile service through Independent Drive Test (IDT).

In IDT, the performance of all service providers providing service in a Licensed Service Area (LSA) through various technologies (like 2G/ 3G/ 4G/ 5G) for voice and data are measured by conducting drive test. The drive test routes are finalised based on various objective criteria like reported network performance, consumer complaints etc. Methodology adopted for conducting IDT is elaborated in **APPENDIX-I**.

## 2. Executive Summary (LSA)

### 2.1 Drive test details

This report covers the findings of the IDT undertaken in UP West License Service Area (LSA) during the month of April-2026 under the supervision of TRAI Regional Office (RO) Bhopal. Details of route/area covered during the IDT are as given below:

S. No	Drive test route	Type of route	Distance covered (KMs)	From date	To date
1	Rudrapur, Haldwani & Kashipur	City	381.4	6-Apr-2026	9-Apr-2026
2	Rudrapur and Adjoining areas	Inter Operator Calling	26.6 & 4 Locations	9-Apr-2026	9-Apr-2026
3	Rudrapur, Haldwani & Kashipur	Hotspot	14 Locations	6-Apr-2026	9-Apr-2026
4	Haldwani	Walk test	3.2	7-Apr-2026	7-Apr-2026

**Table-1:** Drive test summary

## 2.2 Drive test routes

The map provides overview of drive test routes indicating city drive, Inter-operator call test, hotspots and walk test as per the legends shown on the map.

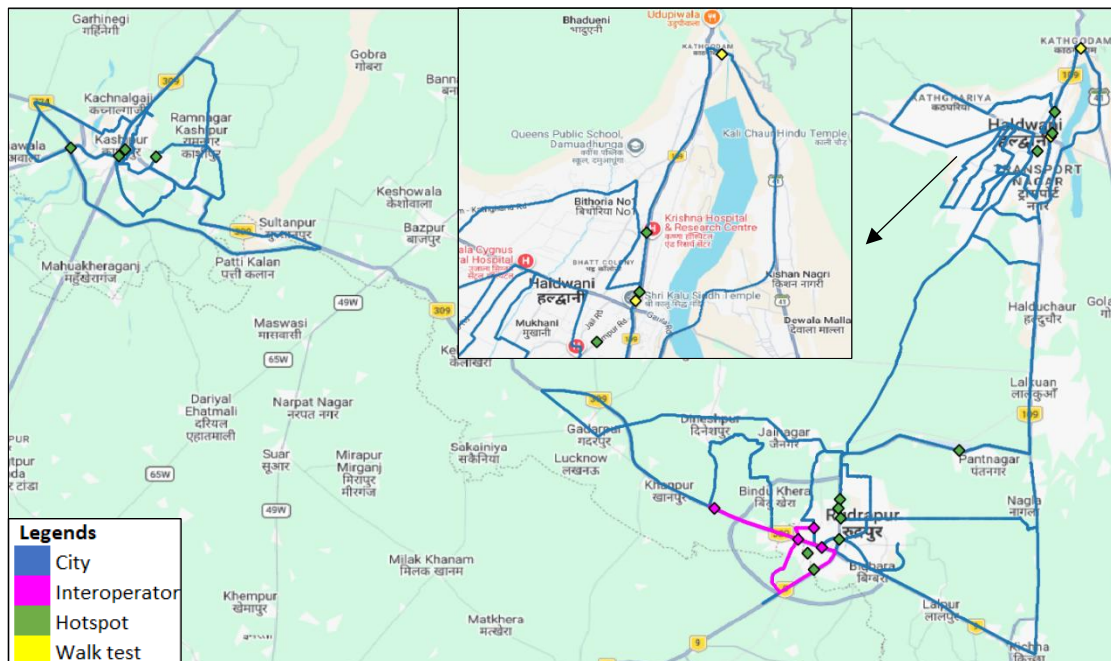


Figure-1: Drive test routes

## 2.3 Summary of areas covered

### a) City-

**Rudrapur-** Gadarpur, Dineshpur, Jainagar, Khempur/Khanpur, Bindt Khera, Rudrapur, Bilhara, Lalpur and Kichha etc.

**Haldwani-** Kathgodam, Haldwani, Transport Nagar, Gorapadao and Motahaldu etc.

**Kashipur-** Pratappur, Kachnalgaji, Kashipur, Dhmar Khera, Ramnagar, Dhakia Kalan, Sultanpur and Patti Kalan etc.

### b) Hotspot

1. District & Session Court Rudrapur
2. Government Medical College Haldwani
3. Government Medical College Rudrapur
4. Haldwani Bus Stand
5. Kashipur Bus Depot
6. Kashipur Railway Station
7. KVR Hospital Kashipur
8. Maa Bal Sundari Temple Kashipur
9. MB PG Inter College Haldwani
10. Metropolis mall Rudrapur
11. Pantnagar Airport
12. Rudrapur Bus Depot
13. Rudrapur City Railway Station
14. SBS Government PG College Rudrapur

### c) Walk Test

1. Chowk Bazaar Haldwani
2. Kathgodam Railway Station

## 2.4 Telecom service providers detected frequency bands

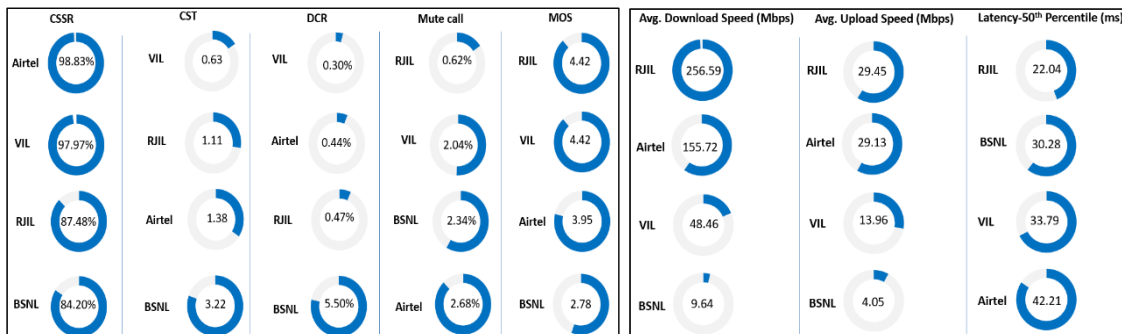
Technologies covered during the IDT and frequency bands in use are summarised in table below:

S.no.	Name of TSP	Technology	Frequency Bands (In MHz)
1	Bharti Airtel Ltd.	2G	1800
2	Bharti Airtel Ltd.	4G	850,1800,2100,2300
3	Bharti Airtel Ltd.	5G	3500
4	BSNL	2G	900
5	BSNL	3G	2100
6	BSNL	4G	700,2100,2500
7	Reliance JIO Infocomm Ltd.	4G	850,1800,2300
8	Reliance JIO Infocomm Ltd.	5G	700,3500
9	Vodafone Idea Ltd.	2G	900
10	Vodafone Idea Ltd.	4G	900,1800,2100,2500
11	Vodafone Idea Ltd.	5G	3500

**Table-2:** Telecom service provider (TSP) covered in IDT

## 2.5 Performance against key QoS parameters

CSSR: Call Setup Success Rate (in %), CST: Call Setup Time (in seconds), DCR: Drop Call Rate (in %) & MOS: Mean Opinion Score.



### Summary-Voice services

**Call Setup Success Rate:** Airtel, BSNL, RJIL and VIL have 98.83%, 84.20%, 87.48% and 97.97% call setup success rate respectively in Auto-selection mode (5G/4G/3G/2G).

**Call Setup Time:** Airtel, BSNL, RJIL and VIL have call setup time of 1.38, 3.22, 1.11 and 0.63 seconds respectively in Auto-selection mode (5G/4G/3G/2G).

**Drop Call Rate:** Airtel, BSNL, RJIL and VIL have drop call rate of 0.44%, 5.50%, 0.47% and 0.30% respectively in Auto-selection mode (5G/4G/3G/2G).

**Call Silence/Mute Rate:** Airtel, RJIL and VIL have silence call rate of 2.68%, 2.34%, 0.62% and 2.04% respectively in packet switched network (4G/5G).

**Mean Opinion Score (MOS):** Airtel, BSNL, RJIL and VIL have average MOS of 3.95, 2.78, 4.42 and 4.42 respectively.

### Summary-Data services

#### Data Download performance (Overall):

Average download speed of Airtel (5G/4G/2G) is 155.72 Mbps, BSNL (4G/3G/2G) is 9.64 Mbps, RJIL (5G/4G) is 256.59 Mbps and VIL (5G/4G/2G) is 48.46 Mbps.

**Data Upload performance (Overall):** Average upload speed of Airtel (5G/4G/2G) is 29.13 Mbps, BSNL (4G/3G/2G) is 4.05 Mbps, RJIL (5G/4G) is 29.45 Mbps and VIL (5G/4G/2G) is 13.96 Mbps.

**Latency (Overall):** Airtel, BSNL, RJIL and VIL 50<sup>th</sup> percentile latency is 42.21 ms, 30.28 ms, 22.04 ms & 33.79 ms respectively.

#### Data performance - Hotspots (in Mbps):

Airtel- 4G D/L: 23.48	4G U/L: 10.58
5G D/L: 175.52	5G U/L: 32.16
BSNL- 4G D/L: 10.58	4G U/L: 5.00
RJIL- 4G D/L: 54.43	4G U/L: 9.35
5G D/L: 302.54	5G U/L: 29.49
VIL- 4G D/L: 29.17	4G U/L: 14.92
5G D/L: 161.98	5G U/L: 21.28

Note- "D/L" Download speed, "U/L" Upload speed

- The Poor signal strength in auto-selection mode (5G/4G/3G/2G) during **voice** testing has been observed in 4.40%, 20.25%, 3.51% & 1.55% of the **City IDT route** in case of Airtel, BSNL, RJIL and VIL respectively. {refer **figure- 33 to 36** as per the **Section 6.1** under Para-6 (Annexure)}
- The Poor signal strength in auto-selection mode (5G/4G/3G/2G) during **data** testing has been observed in 10.00%, 19.93%, 10.34% & 5.36% of the **City IDT route** in case of Airtel, BSNL, RJIL and VIL respectively. {refer **figure- 37 to 40** as per the **Section 6.1** under Para-6 (Annexure)}

# QoS Performance Analysis- UP West LSA

### 3. QoS performance analysis-LSA level

#### 3.1 Overview

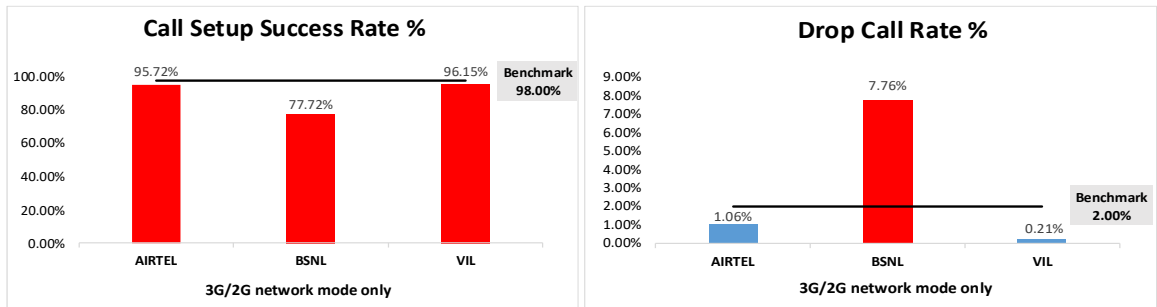
This section provides summary of overall QoS performance of the telecom service provider’s network in the LSA by aggregating the results of drive tests conducted in the UP West LSA during the month of April-2026 covering city drive, inter-operator, hotspots and walk tests. (Refer Table-1)

#### 3.2 Voice performance

(a) **Voice Call Performance in 3G/2G network mode only:** 3G/2G network mode testing has been done to reflect experience for respective users as they have only 3G/2G compatible handsets.

Parameters	Service Provider		
	3G/2G network mode only		
	AIRTEL	BSNL	VIL
Call Attempts	491	597	493
Call Setup Success Rate %	95.72	77.72	96.15
Drop Call Rate %	1.06	7.76	0.21
Call Setup Time-Average (Second)	6.41	2.69	4.57
Handover Success Rate %	99.16	98.48	99.57

**Table-3:** Summary of voice call performance in 3G/2G network mode only.



**Figure-2:** Call setup success rate and drop call rate performance.

Number of unique cell Id’s covered in Voice test- Technology wise			
Technology	Service Provider		
	3G/2G network mode only		
	AIRTEL	BSNL	VIL
3G	NA	128	NA
2G	592	148	524

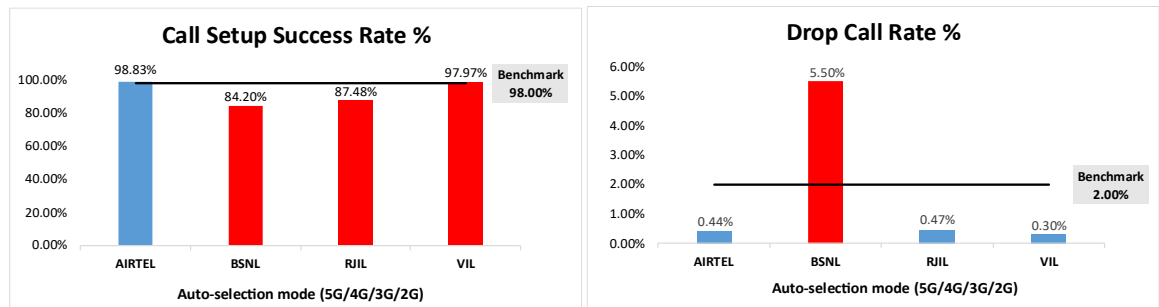
**Table-4:** Technology wise number of network cell Id’s latched during drive test.

<b>Note-</b>
<ul style="list-style-type: none"> <li>RJIL does not have 3G/2G network.</li> <li>NA- Service provider doesn't provide services in respective technology.</li> </ul>

**(b) Voice Call Performance in auto network selection mode (5G/4G/3G/2G)**

Parameters	Service Provider			
	Auto-selection mode (5G/4G/3G/2G)			
	AIRTEL	BSNL	RJIL	VIL
Call Attempts	686	734	735	689
Call Setup Success Rate %	98.83	84.20	87.48	97.97
Drop Call Rate %	0.44	5.50	0.47	0.30
Call Setup Time-Average (Second)	1.38	3.22	1.11	0.63
Handover Success Rate %	100.00	98.49	99.89	100.00

**Table-5:** Summary of voice call performance in network auto-selection mode.



**Figure-3:** Performance for call setup success rate and drop call rate.

Parameter	Service Provider			
	Mobile-to-Mobile (5G/4G - Open Mode)			
	AIRTEL	BSNL	RJIL	VIL
Call Established (within service provider Network)	485	427	481	491
Number of silences call for >4 Sec	13	10	3	10
Silence Call Rate %	2.68	2.34	0.62	2.04
Number of silence instances for >4 Sec	16	14	3	12
Number of silence instances for >3 Sec	23	22	5	16
Number of silence instances for >2 sec	33	37	15	71
RTP Jitter (4G & 5G) in ms	4.26	8.89	17.31	14.23
Packet loss Rate Downlink %	0.89	6.36	1.08	0.93
Packet loss Rate Uplink %	0.61	6.28	0.87	0.64

**Table-6:** Summary of silence instances & packet loss rate for mobile to mobile calls.

Number of unique cell Id's covered in Voice test- Technology wise				
Technology	Service Provider			
	Auto-selection mode (5G/4G/3G/2G)			
	AIRTEL	BSNL	RJIL	VIL
5G	0	NA	832	0
4G	930	460	677	997
3G	NA	51	NA	NA
2G	6	131	NA	5

**Table-7:** Technology wise number of network cell Id's latched during drive test.

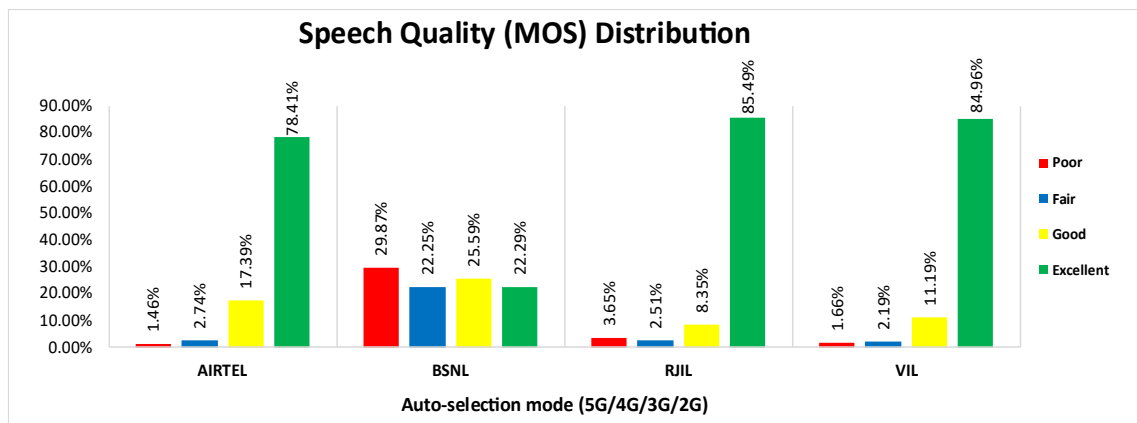
<b>Note-</b>
<ul style="list-style-type: none"> <li>• NA- Service provider doesn't provide services in respective technology.</li> <li>• 0- No cell Id's were found in respective technology.</li> </ul>

**(c) Mean Opinion Score (MOS) performance for speech quality:**

Mean opinion score indicates quality of speech observed during the drive test across different technologies. This parameter has been calculated for mobile-to-mobile calls made within same operator network in auto mode (5G/4G/3G/2G). As per ITU-T Recommendation P.863.1, MOS values means: 5-Excellent, 4-Good, 3-Fair, 2-Poor, 1-Bad.

Speech Quality (MOS) distribution	Service Provider			
	AIRTEL	BSNL	RJIL	VIL
Total Number of MOS Samples for calls table-6	2886	2243	2825	2832
Speech Quality (Average MOS)	3.95	2.78	4.42	4.42
Number of samples with MOS >=4 to <5 (Excellent)	2263	500	2415	2406
Number of samples with MOS >=3 to <4 (Good)	502	574	236	317
Number of samples with MOS >=2 to <3 (Fair)	79	499	71	62
Number of samples with MOS >=1 to <2 (Poor)	42	670	103	47
%age of samples with MOS >=4 to <5 (Excellent)	78.41%	22.29%	85.49%	84.96%
%age of samples with MOS >=3 to <4 (Good)	17.39%	25.59%	8.35%	11.19%
%age of samples with MOS >=2 to <3 (Fair)	2.74%	22.25%	2.51%	2.19%
%age of samples with MOS >=1 to <2 (Poor)	1.46%	29.87%	3.65%	1.66%

**Table-8:** Summary of speech quality (MOS) samples.



**Figure- 4:** Distribution of samples in MOS range.

**(d) Inter-service provider voice call performance:** To check the performance of inter-service providers call setup success rate, total 114 to 125 inter operator calls were attempted at 4 locations which are KV Substation Navodaya Rudrapur, Bharat Petroleum, Quest complex, and Bhartiyam's IKEBANA School. Additionally, testing was conducted during dynamic drive tests in Rudrapur city. The call setup success rate and call setup time observation are as below.

Call Setup Success Rate %				
From Service Provider	To Service Provider			
	AIRTEL	BSNL	RJIL	VIL
AIRTEL	NA	96.49	100.00	100.00
BSNL	96.61	NA	96.72	100.00
RJIL	100.00	99.17	NA	85.47
VIL	100.00	95.04	96.52	NA

**Table-9:** Call setup success rate across service providers

<b>Note-</b>
• NA- Only inter-operator calls were measured during test.

Call setup time average (seconds)				
From Service Provider	To Service Provider			
	AIRTEL	BSNL	RJIL	VIL
AIRTEL	NA	3.57	1.29	1.76
BSNL	3.62	NA	3.24	3.09
RJIL	1.96	3.92	NA	2.02
VIL	2.60	4.36	1.60	NA

**Table-10:** Call setup time across service providers.

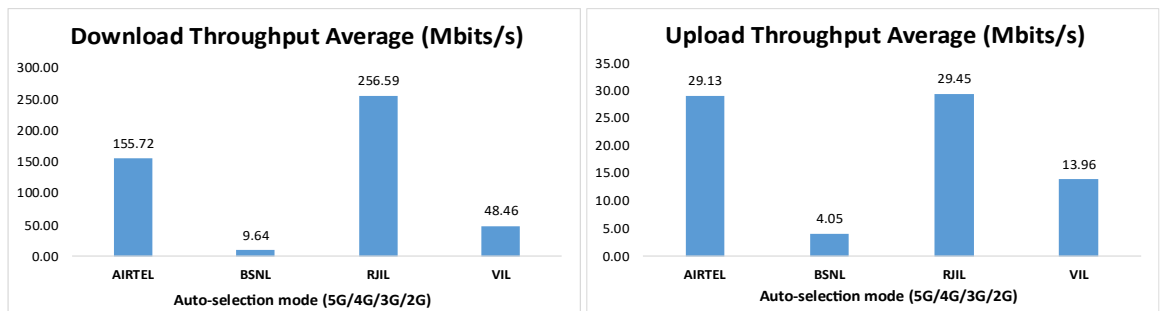
<b>Note-</b>
• NA- Only inter-operator calls were measured during test.

### 3.3 Data performance

#### (a) Data Parameters (Auto-selection mode- 5G/4G/3G/2G)

Parameters		Service Provider			
		Auto-selection mode (5G/4G/3G/2G)			
		AIRTEL	BSNL	RJIL	VIL
Download Throughput (Mbits/s)	Average	155.72	9.64	256.59	48.46
	80th Percentile	236.44	16.86	406.85	68.94
	20th Percentile	35.42	1.71	100.78	13.54
Upload Throughput (Mbits/s)	Average	29.13	4.05	29.45	13.96
	80th Percentile	47.25	6.56	54.24	22.34
	20th Percentile	9.00	1.22	7.70	4.31
Latency (ms)	50th Percentile	42.21	30.28	22.04	33.79

**Table-11:** Summary of data performance in network auto-selection mode.



**Figure- 5:** Download and Upload throughput

<b>Number of unique cell Id's covered in Data test- Technology wise</b>				
<b>Technology</b>	<b>Service Provider</b>			
	<b>Auto-selection mode (5G/4G/3G/2G)</b>			
	<b>AIRTEL</b>	<b>BSNL</b>	<b>RJIL</b>	<b>VIL</b>
<b>5G</b>	0	NA	735	0
<b>4G</b>	1098	401	237	1042
<b>3G</b>	NA	44	NA	NA
<b>2G</b>	2	11	NA	5

**Table-12:** Technology wise number of network cell Id's latched during drive test.

**Note-**

- NA- Service provider doesn't provide services in respective technology.
- 0- No cell Id's were found in respective technology.

# Detailed QoS Performance Analysis

## 4. Detailed QoS performance analysis

### 4.1 Overview

This section covers analysis on performance of various categories of drives like city, hotspots and walk test for all telecom service providers, the results of drive tests conducted are shown individually for respective areas/locations.

### 4.2 City

Drive test has been conducted from 6<sup>th</sup> April 2026 to 9<sup>th</sup> April 2026 in Rudrapur, Haldwani and Kashipur city. (Refer Table-1)

#### 4.2.1 Drive test route

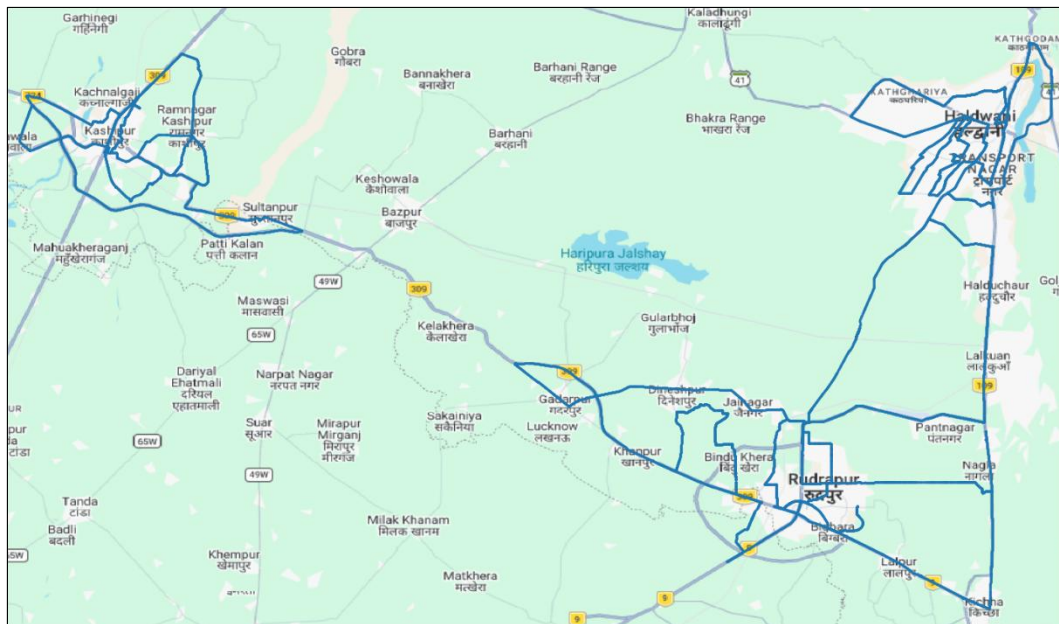


Figure- 6: Drive test routes

#### 4.2.2 Areas covered

**Rudrapur-** Gadarpur, Dineshpur, Jainagar, Khempur/Khanpur, Bindt Khera, Rudrapur, Bilhara, Lalpur and Kichha etc.

**Haldwani-** Kathgodam, Haldwani, Transport Nagar, Gorapadao and Motahaldu etc.

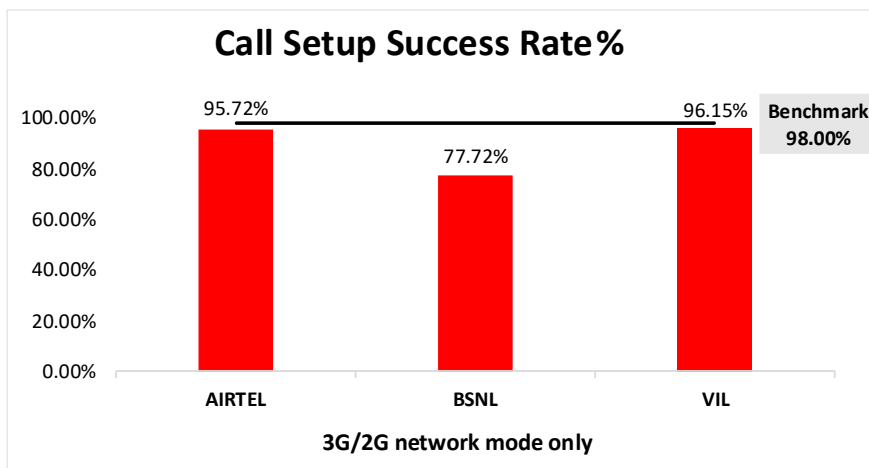
**Kashipur-** Pratappur, Kachnalgaji, Kashipur, Dhmar Khera, Ramnagar, Dhakia Kalan, Sultanpur and Patti Kalan etc.

#### 4.2.3 Voice performance

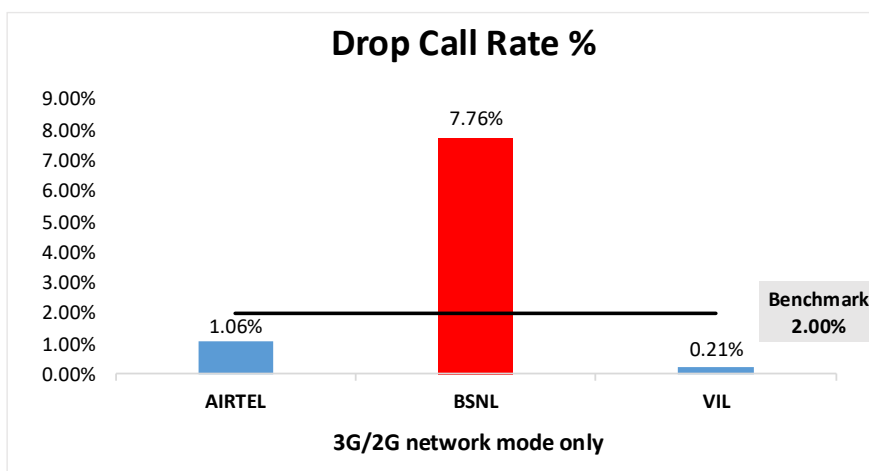
**(a) Voice Call Performance in 3G/2G network mode only:** 3G/2G network mode testing has been done to reflect experience for respective users as they have only 3G/2G compatible handsets.

Parameters	Service Provider		
	3G/2G network mode only		
	AIRTEL	BSNL	VIL
Call Attempts	491	597	493
Call Setup Success Rate %	95.72	77.72	96.15
Drop Call Rate %	1.06	7.76	0.21
Call Setup Time-Average (Second)	6.41	2.69	4.57
Handover Success Rate %	99.16	98.48	99.57

**Table-13:** Summary of voice call performance in 3G/2G network mode only.



**Figure-7:** Performance for call setup success rate.



**Figure-8:** Performance for drop call rate.

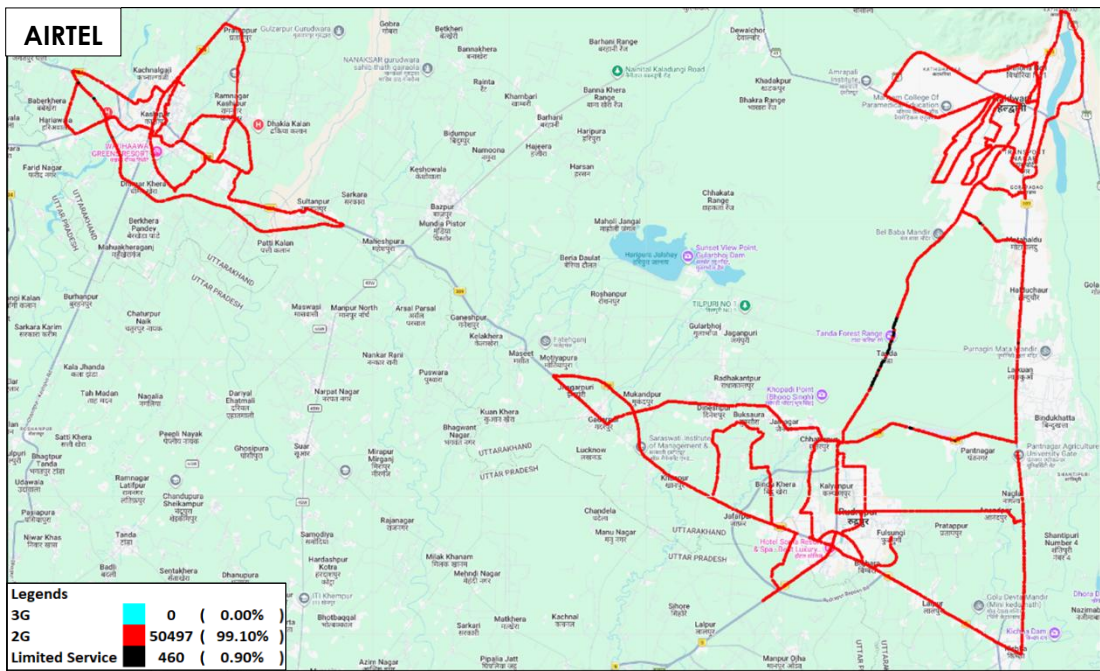
**(b) Network Technology:** This section represent time spent on various network technologies.

Technology	Service Provider		
	AIRTEL	BSNL	VIL
3G	NA	46.23%	NA
2G	99.10%	52.77%	98.68%
Limited Service	0.90%	1.01%	1.32%

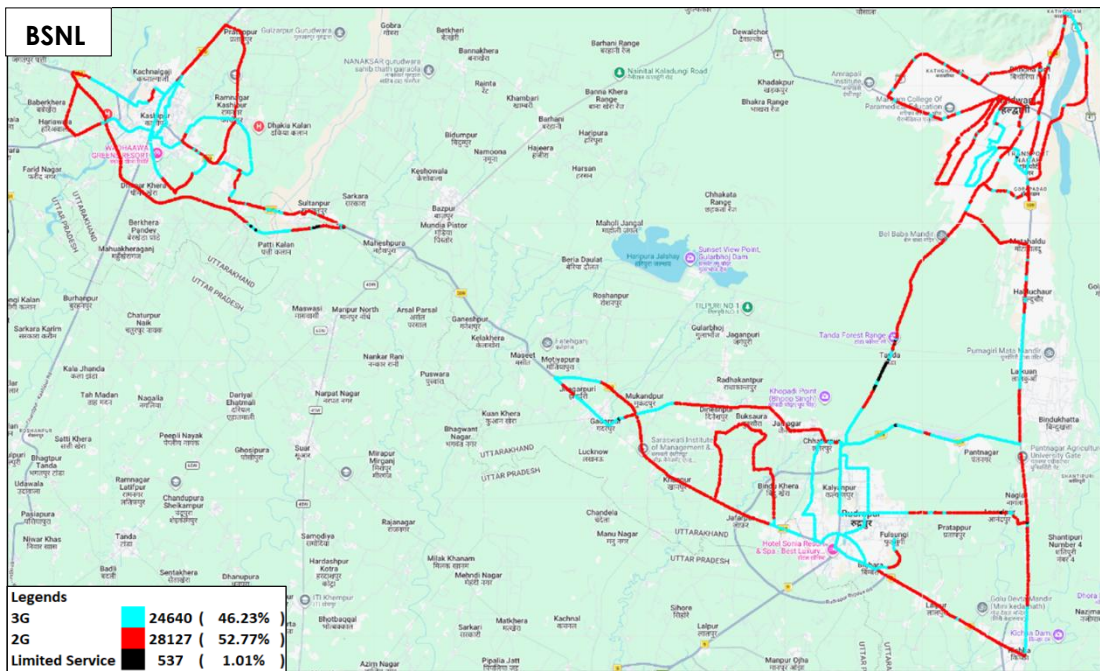
**Table-14:** Time spent on technology during drive test 3G/2G network mode.

**Note-**

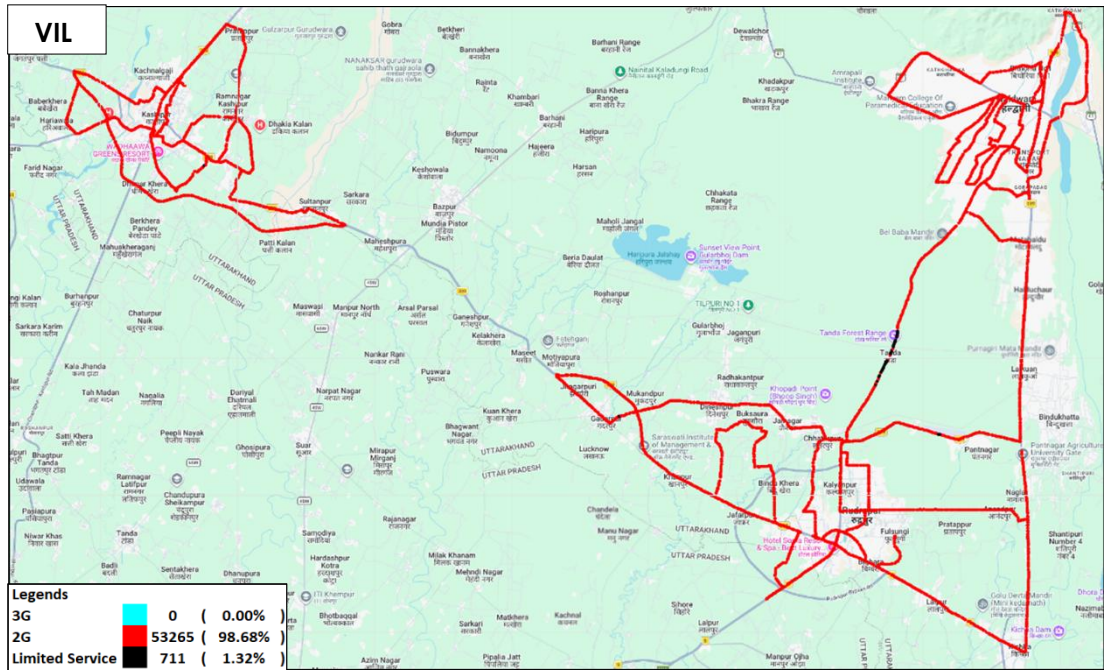
- NA- Service provider doesn't provide services in respective technology.



**Figure-9:** Serving technology plots 3G/2G network mode - AIRTEL

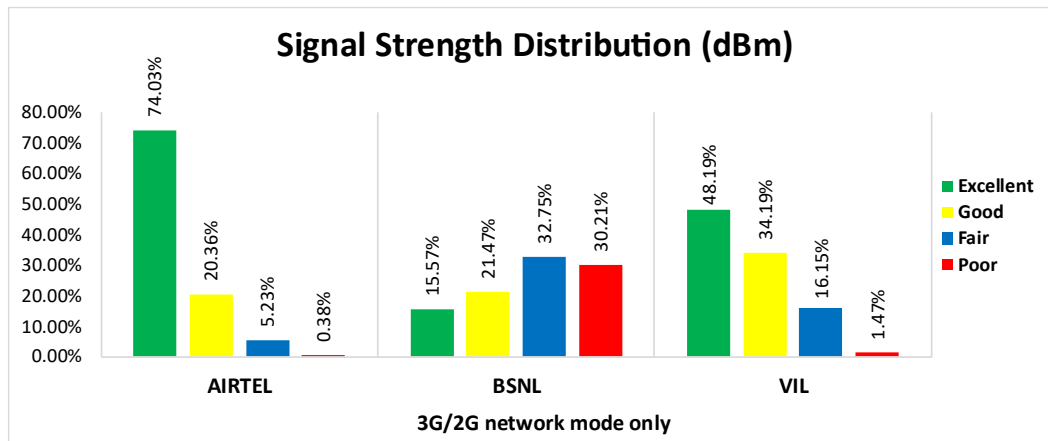


**Figure-10:** Serving technology plots 3G/2G network mode - BSNL.



**Figure-11:** Serving technology plots 3G/2G network mode - VIL.

**(c) Network Signal Strength Distribution:** The following chart represents signal strength distribution for 3G/2G network mode only. (Refer figure- 30, 31 & 32 for map view)



**Figure-12:** Signal strength distribution 3G/2G network mode only.

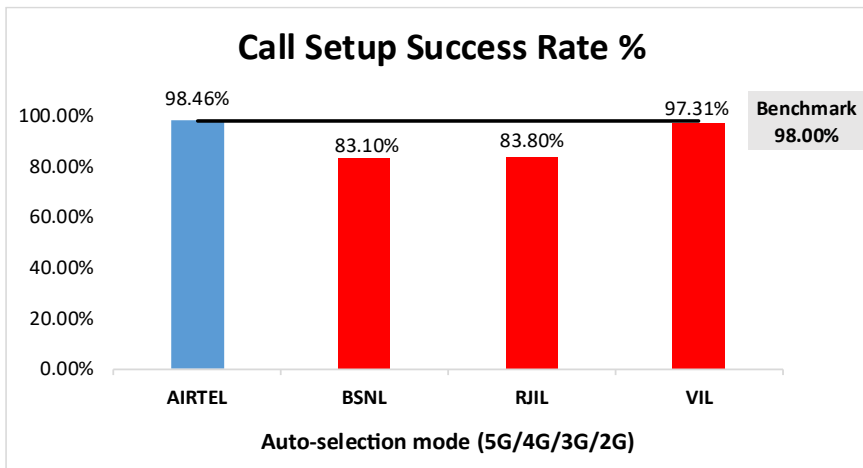
**Observations:**

- Airtel has 74% of samples falling in the excellent signal strength category.
- BSNL has 16% of samples falling in the excellent signal strength category.
- VIL has 48% of samples falling in the excellent signal strength category.

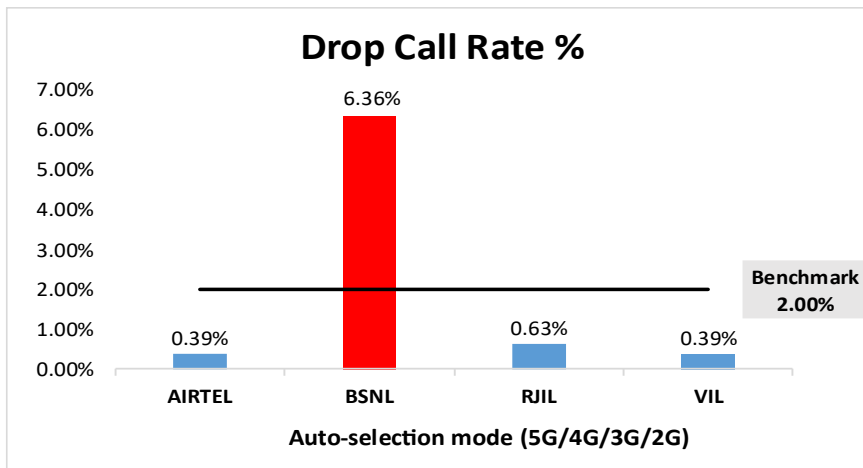
**(d) Voice Call Performance in auto network selection mode (5G/4G/3G/2G)**

Parameters	Service Provider			
	Auto-selection mode (5G/4G/3G/2G)			
	AIRTEL	BSNL	RJIL	VIL
Call Attempts	519	568	568	521
Call Setup Success Rate %	98.46	83.10	83.80	97.31
Drop Call Rate %	0.39	6.36	0.63	0.39
Call Setup Time Average (Second)	1.29	3.44	1.30	0.66
Handover Success Rate %	100.00	98.36	99.88	100.00

**Table-15:** Summary of voice call performance in network auto-selection mode.



**Figure-13:** Performance for call setup success rate.



**Figure-14:** Performance for drop call rate.

Parameter	Service Provider			
	Mobile-to-Mobile (5G/4G - Open Mode)			
	AIRTEL	BSNL	RJIL	VIL
Call Established (within service provider Network)	485	427	481	491
Number of silences call for >4 Sec	13	10	3	10
Silence Call Rate %	2.68	2.34	0.62	2.04
Number of silence instances for >4 Sec	16	14	3	12
Number of silence instances for >3 Sec	23	22	5	16
Number of silence instances for >2 sec	33	37	15	71
RTP Jitter (4G & 5G) in ms	4.26	8.89	17.31	14.23
Packet loss Rate Downlink %	0.89	6.36	1.08	0.93
Packet loss Rate Uplink %	0.61	6.28	0.87	0.64

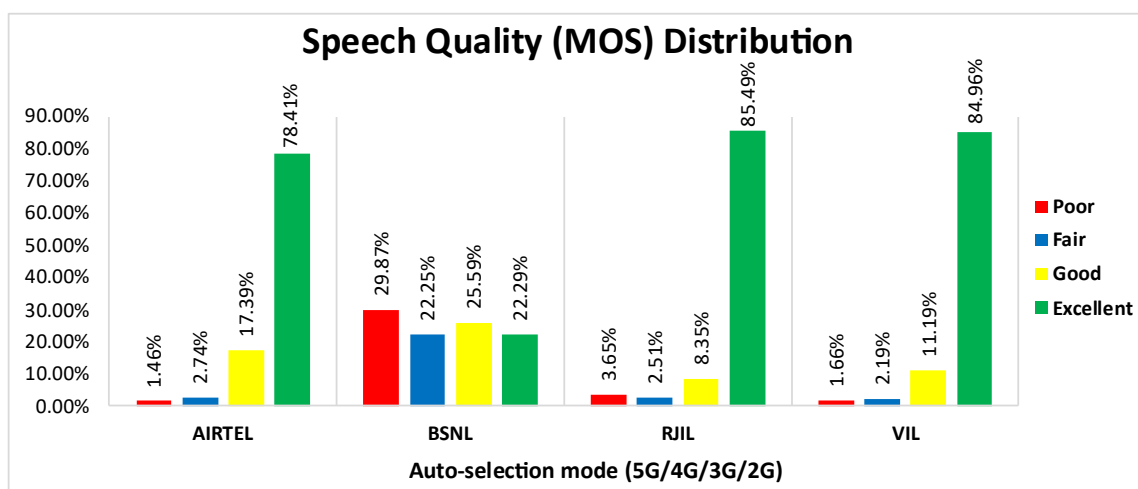
**Table-16:** Summary of silence instances & packet loss rate for mobile to mobile call.

**(e) Mean Opinion Score (MOS) performance for speech quality:**

Mean opinion score indicate quality of speech observed during the drive test across different technologies. This parameter has been calculated for mobile to mobile calls made within same operator network in auto mode (5G/4G/3G/2G). As per ITU-T Recommendation P.863.1, MOS value means: 5-Excellent, 4-Good, 3-Fair, 2-Poor, 1-Bad.

Speech Quality (MOS) distribution	Service Provider			
	AIRTEL	BSNL	RJIL	VIL
Total Number of MOS Samples for calls in table-16	2886	2243	2825	2832
Speech Quality (Average MOS)	3.95	2.78	4.42	4.42
Number of samples with MOS >=4 to <5 (Excellent)	2263	500	2415	2406
Number of samples with MOS >=3 to <4 (Good)	502	574	236	317
Number of samples with MOS >=2 to <3 (Fair)	79	499	71	62
Number of samples with MOS >=1 to <2 (Poor)	42	670	103	47
%age of samples with MOS >=4 to <5 (Excellent)	78.41%	22.29%	85.49%	84.96%
%age of samples with MOS >=3 to <4 (Good)	17.39%	25.59%	8.35%	11.19%
%age of samples with MOS >=2 to <3 (Fair)	2.74%	22.25%	2.51%	2.19%
%age of samples with MOS >=1 to <2 (Poor)	1.46%	29.87%	3.65%	1.66%

**Table-17:** Summary of speech quality (MOS) samples.



**Figure-15:** Distribution of samples in MOS range.

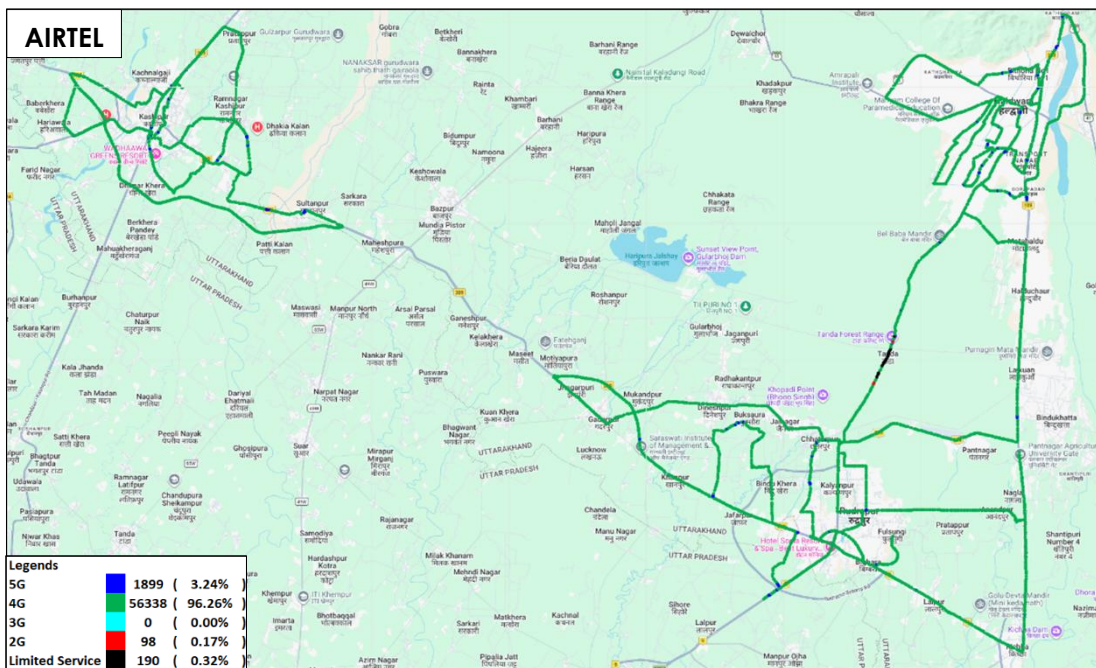
**(f) Network Technology:** This section represents time spent on various network technologies.

Technology	Service Provider			
	AIRTEL	BSNL	RJIL	VIL
5G	3.24%	NA	76.30%	0.61%
4G	96.26%	52.35%	23.30%	97.22%
3G	NA	7.79%	NA	NA
2G	0.17%	38.68%	NA	0.87%
Limited Service	0.32%	1.18%	0.40%	1.30%

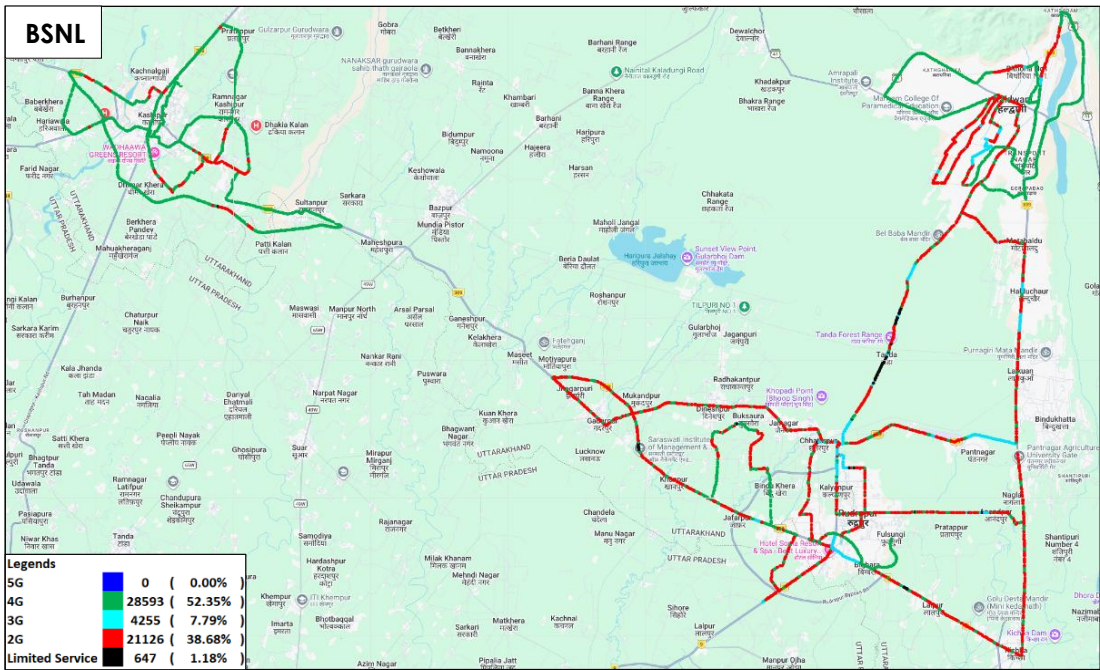
**Table-18:** Time spent on technology during drive test in auto-selection mode (5G/4G/3G/2G) voice .

**Note-**

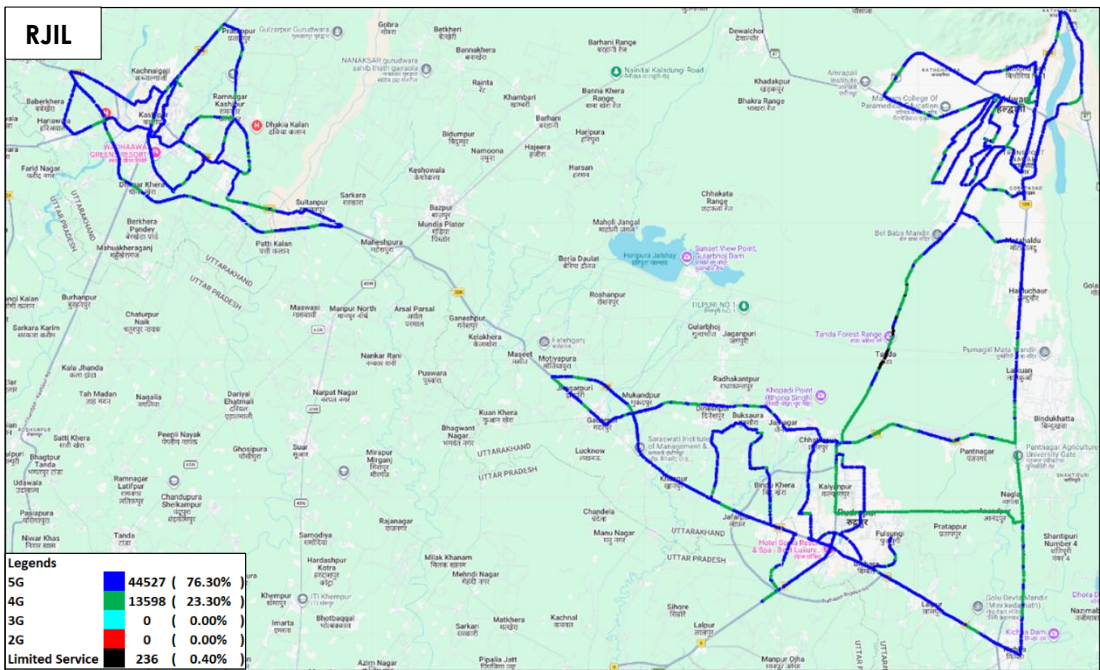
- NA- Service provider doesn't provide services in respective technology.



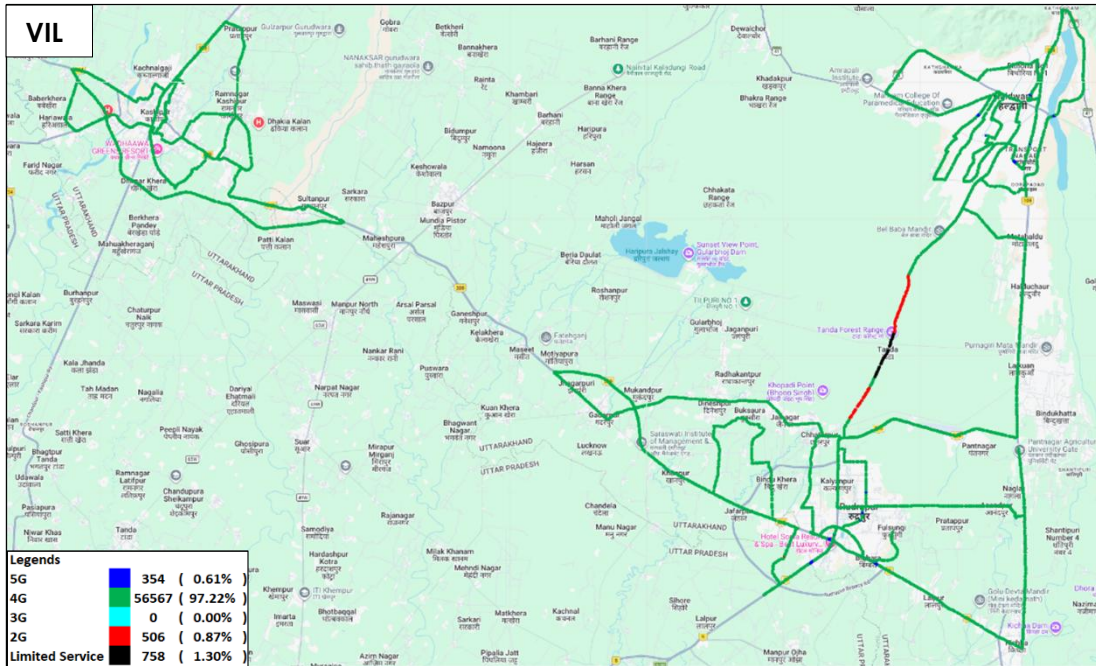
**Figure-16:** Serving technology plots in auto-selection mode (5G/4G/3G/2G) voice - AIRTEL.



**Figure-17:** Serving technology plots in auto-selection mode (5G/4G/3G/2G) voice - BSNL.

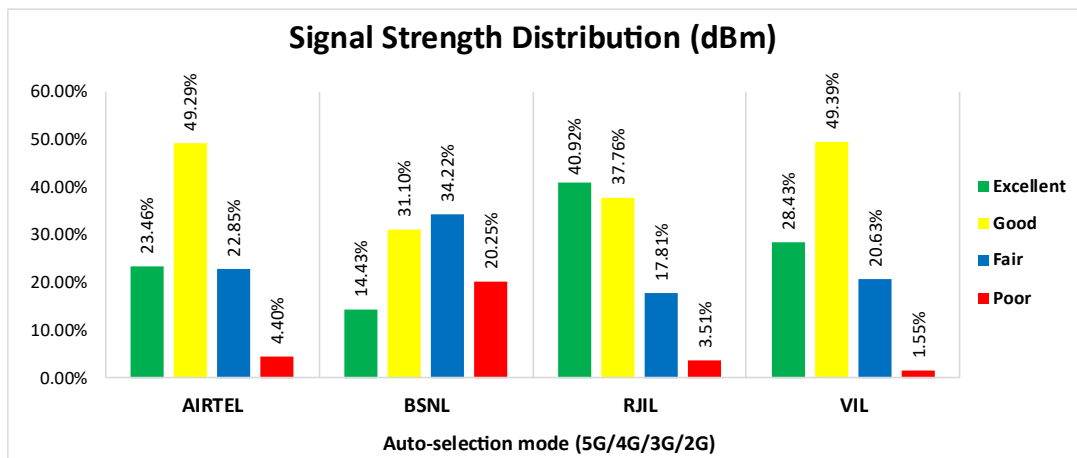


**Figure-18:** Serving technology plots in auto-selection mode (5G/4G/3G/2G) voice - RJIL.



**Figure-19:** Serving technology plots in auto-selection mode (5G/4G/3G/2G) voice - VIL

**(g) Network Signal Strength Distribution:** The following chart provides signal strength distribution for auto-selection mode (5G/4G/3G/2G) voice. (Refer figure-33, 34, 35 & 36 for map view)



**Figure-20:** Signal strength distribution auto-selection mode (5G/4G/3G/2G) voice.

**Observations:**

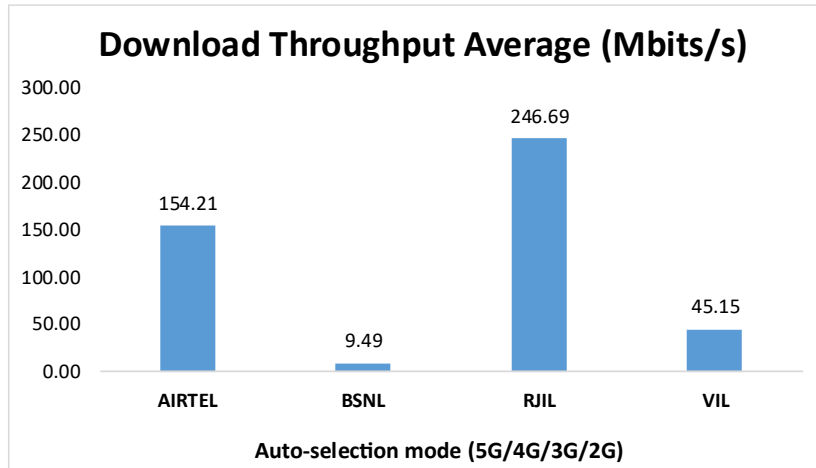
- Airtel has 23% of samples falling in the excellent signal strength category.
- BSNL has 14% of samples falling in the excellent signal strength category.
- RJIL has 41% of samples falling in the excellent signal strength category.
- VIL has 28% of samples falling in the excellent signal strength category.

## 4.2.4 Data performance

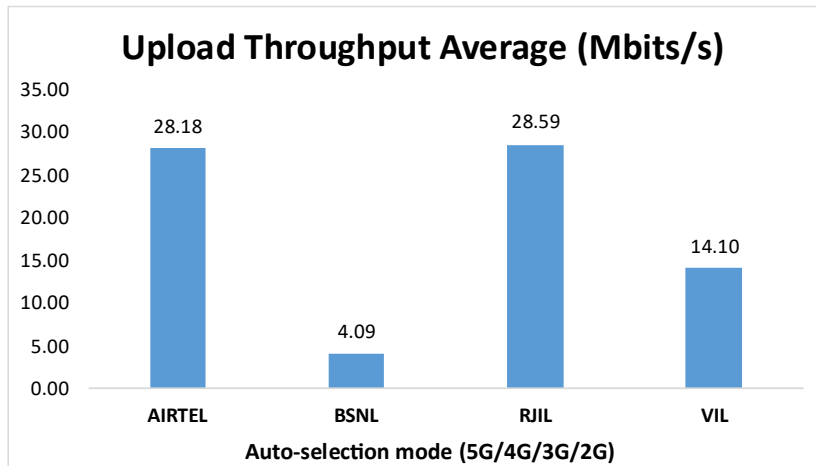
### (a) Data Parameters (Auto-selection mode- 5G/4G/3G/2G)

Parameters		Service Provider			
		Auto-selection mode (5G/4G/3G/2G)			
		AIRTEL	BSNL	RJIL	VIL
Download Throughput (Mbits/s)	Average	154.21	9.49	246.69	45.15
	80th Percentile	244.58	16.74	392.04	63.25
	20th Percentile	30.94	1.51	96.44	13.35
Upload Throughput (Mbits/s)	Average	28.18	4.09	28.59	14.10
	80th Percentile	45.50	6.57	51.03	22.61
	20th Percentile	8.42	1.21	7.46	4.33
Latency (ms)	50th Percentile	40.60	33.67	22.30	32.74

**Table-19:** Summary of Data performance in network auto-selection mode.



**Figure- 21:** Download throughput



**Figure- 22:** Upload throughput

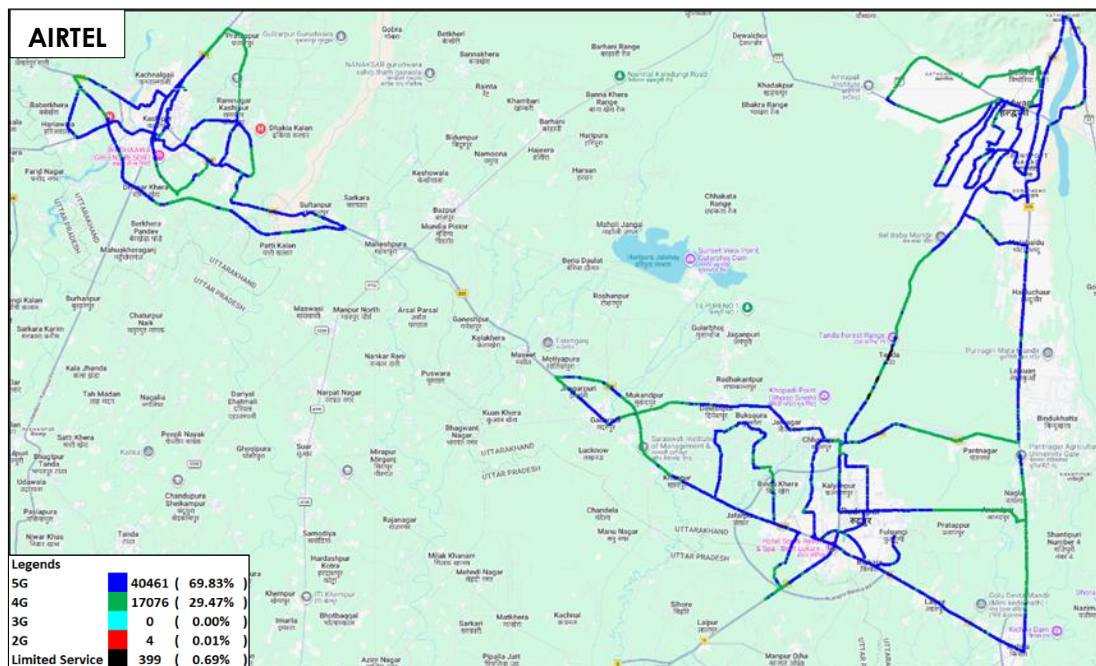
**(b) Network Technology:** This section represents time spent on various network technologies.

Technology	Service Provider			
	AIRTEL	BSNL	RJIL	VIL
5G	69.83%	NA	90.69%	11.54%
4G	29.47%	71.43%	7.87%	86.32%
3G	NA	24.52%	NA	NA
2G	0.01%	1.15%	NA	0.32%
Limited Service	0.69%	2.90%	1.44%	1.82%

**Table-20:** Time spent on technology during drive test in auto-selection mode (5G/4G/3G/2G) data.

**Note-**

- NA- Service provider doesn't provide services in respective technology.



**Figure-23:** Serving technology plots in auto-selection mode (5G/4G/3G/2G) data - AIRTEL.

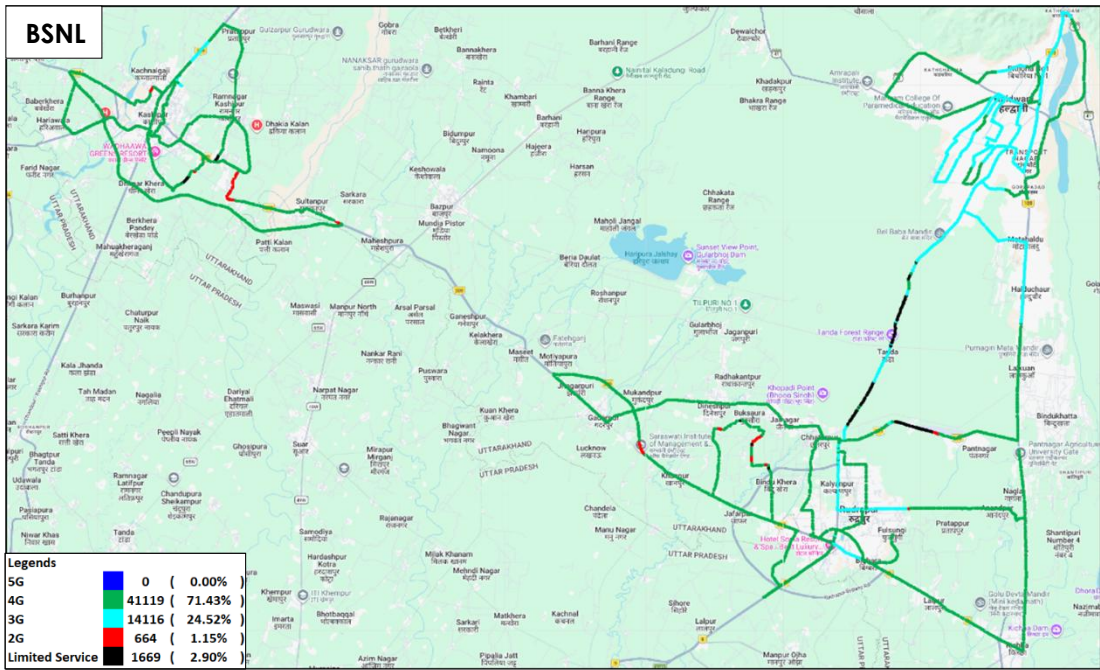


Figure-24: Serving technology plots in auto-selection mode (5G/4G/3G/2G) data - BSNL.

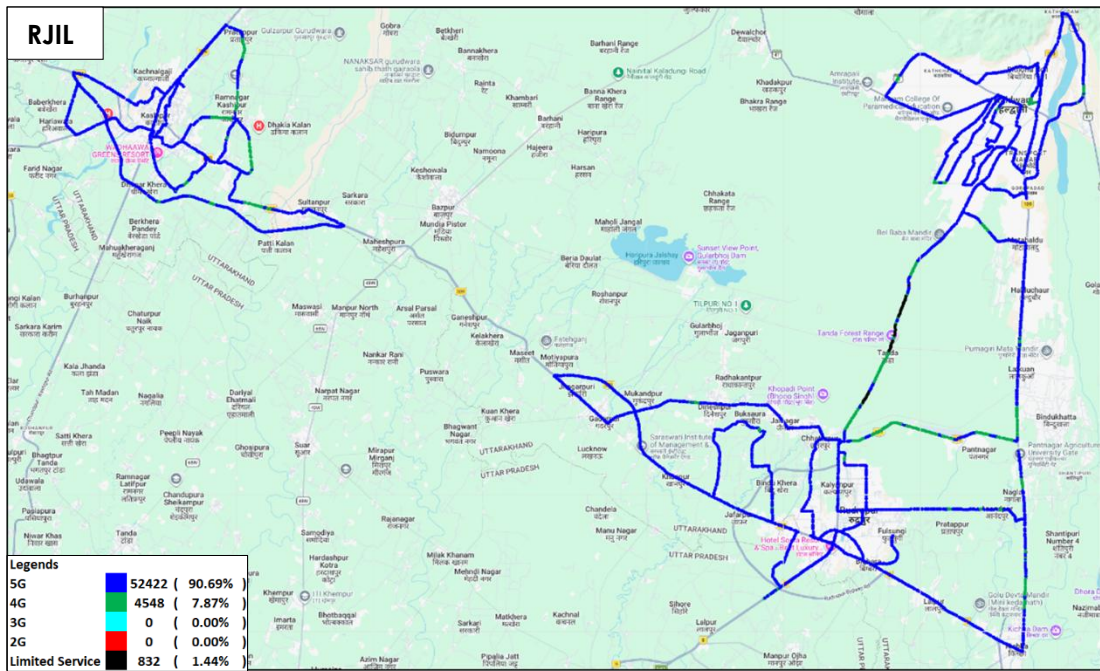
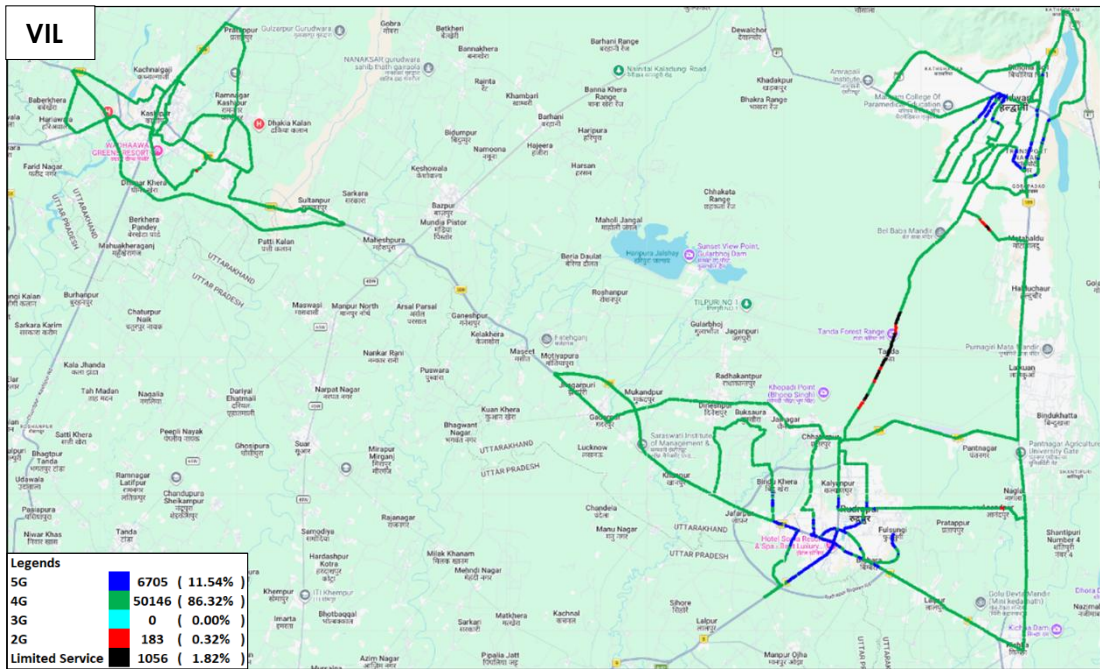
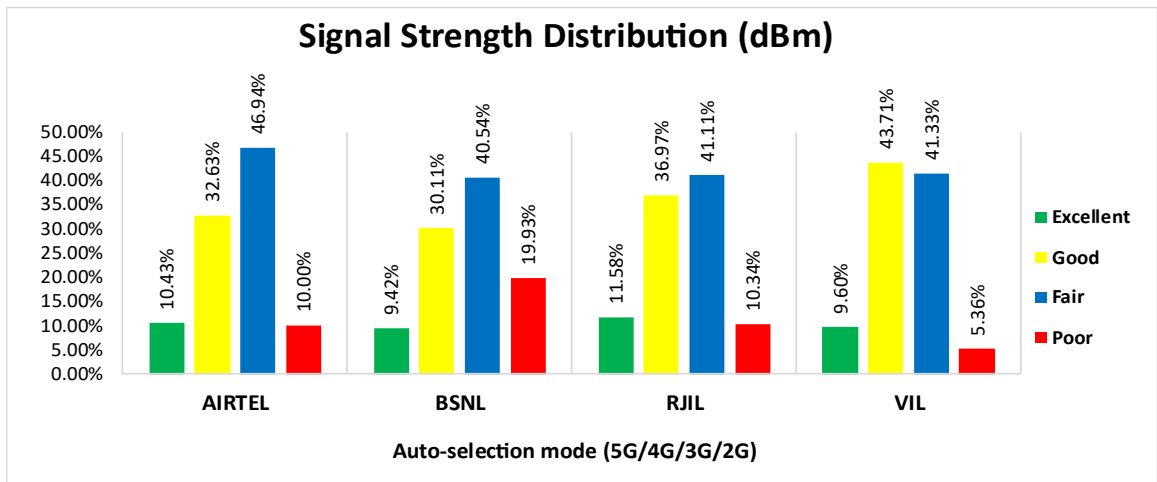


Figure-25: Serving technology plots in auto-selection mode (5G/4G/3G/2G) data - RJIL.



**Figure-26:** Serving technology plots in auto-selection mode (5G/4G/3G/2G) data - VIL

**(c) Network Signal Strength Distribution:** The following chart provides signal strength distribution for auto-selection mode (5G/4G/3G/2G) data. (Refer figure-37, 38, 39 & 40 for map view)



**Figure-27:** Signal strength distribution auto-selection mode (5G/4G/3G/2G) data.

**Observations:**

- Airtel has 10% of samples falling in the excellent signal strength category.
- BSNL has 9% of samples falling in the excellent signal strength category.
- RJIL has 12% of samples falling in the excellent signal strength category.
- VIL has 10% of samples falling in the excellent signal strength category.

### 4.3 Hotspots

Hotspot testing has been done from 6<sup>th</sup> April 2026 to 9<sup>th</sup> April 2026. Fourteen locations have been tested in Rudrapur, Haldwani and Kashipur city. (Refer Table-1)

#### 4.3.1 Locations

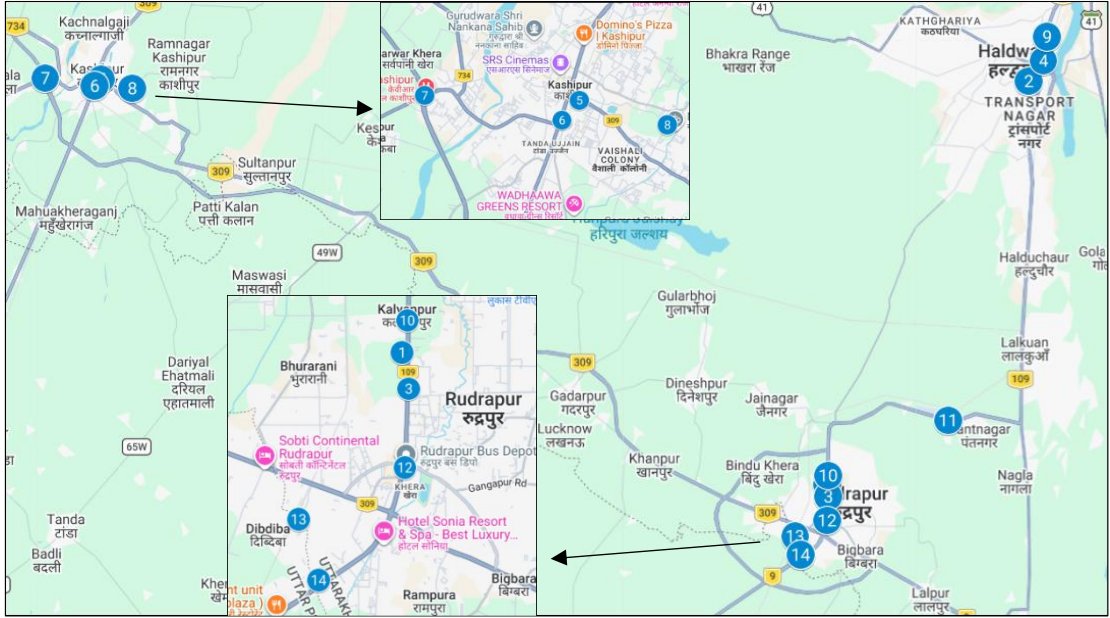


Figure- 28: Hotspot locations

#### 4.3.2 Hotspot covered

1. District & Session Court Rudrapur
2. Government Medical College Haldwani
3. Government Medical College Rudrapur
4. Haldwani Bus Stand
5. Kashipur Bus Depot
6. Kashipur Railway Station
7. KVR Hospital Kashipur
8. Maa Bal Sundari Temple Kashipur
9. MB PG Inter College Haldwani
10. Metropolis mall Rudrapur
11. Pantnagar Airport
12. Rudrapur Bus Depot
13. Rudrapur City Railway Station
14. SBS Government PG College Rudrapur

#### 4.3.3 Voice performance

Overall Voice Performance				
Parameters	Service Provider			
	Auto-selection mode (5G/4G/3G/2G)			
	AIRTEL	BSNL	RJIL	VIL
Call Attempt	140	140	140	140
Call Setup Success Rate %	100.00	85.71	100.00	100.00
Drop Call Rate %	0.71	2.50	0.00	0.00
Call Setup Time-Average (Second)	1.74	2.38	0.56	0.57

Table-21: Overall summary of voice call performance in network auto-selection mode (5G/4G/3G/2G).

<b>District &amp; Session Court Rudrapur</b>				
<b>Parameters</b>	<b>Service Provider</b>			
	<b>Auto-selection mode (5G/4G/3G/2G)</b>			
	<b>AIRTEL</b>	<b>BSNL</b>	<b>RJIL</b>	<b>VIL</b>
<b>Call Attempt</b>	10	10	10	10
<b>Call Setup Success Rate %</b>	100.00	100.00	100.00	100.00
<b>Drop Call Rate %</b>	0.00	0.00	0.00	0.00
<b>Call Setup Time-Average (Second)</b>	1.20	2.17	0.54	0.55

**Table-22:** Summary of voice call performance in network auto-selection mode(5G/4G/3G/2G)

<b>Government Medical College Haldwani</b>				
<b>Parameters</b>	<b>Service Provider</b>			
	<b>Auto-selection mode (5G/4G/3G/2G)</b>			
	<b>AIRTEL</b>	<b>BSNL</b>	<b>RJIL</b>	<b>VIL</b>
<b>Call Attempt</b>	10	10	10	10
<b>Call Setup Success Rate %</b>	100.00	100.00	100.00	100.00
<b>Drop Call Rate %</b>	0.00	0.00	0.00	0.00
<b>Call Setup Time-Average (Second)</b>	1.29	2.31	0.56	0.57

**Table-23:** Summary of voice call performance in network auto-selection mode(5G/4G/3G/2G)

<b>Government Medical College Rudrapur</b>				
<b>Parameters</b>	<b>Service Provider</b>			
	<b>Auto-selection mode (5G/4G/3G/2G)</b>			
	<b>AIRTEL</b>	<b>BSNL</b>	<b>RJIL</b>	<b>VIL</b>
<b>Call Attempt</b>	10	10	10	10
<b>Call Setup Success Rate %</b>	100.00	100.00	100.00	100.00
<b>Drop Call Rate %</b>	0.00	0.00	0.00	0.00
<b>Call Setup Time-Average (Second)</b>	1.21	2.18	0.57	0.62

**Table-24:** Summary of voice call performance in network auto-selection mode(5G/4G/3G/2G)

<b>Haldwani Bus Stand</b>				
<b>Parameters</b>	<b>Service Provider</b>			
	<b>Auto-selection mode (5G/4G/3G/2G)</b>			
	<b>AIRTEL</b>	<b>BSNL</b>	<b>RJIL</b>	<b>VIL</b>
<b>Call Attempt</b>	10	10	10	10
<b>Call Setup Success Rate %</b>	100.00	100.00	100.00	100.00
<b>Drop Call Rate %</b>	0.00	0.00	0.00	0.00
<b>Call Setup Time-Average (Second)</b>	1.26	2.02	0.58	0.62

**Table-25:** Summary of voice call performance in network auto-selection mode(5G/4G/3G/2G)

<b>Kashipur Bus Depot</b>				
<b>Parameters</b>	<b>Service Provider</b>			
	<b>Auto-selection mode (5G/4G/3G/2G)</b>			
	<b>AIRTEL</b>	<b>BSNL</b>	<b>RJIL</b>	<b>VIL</b>
<b>Call Attempt</b>	10	10	10	10
<b>Call Setup Success Rate %</b>	100.00	50.00	100.00	100.00
<b>Drop Call Rate %</b>	0.00	20.00	0.00	0.00
<b>Call Setup Time-Average (Second)</b>	1.57	3.88	0.52	0.64

**Table-26:** Summary of voice call performance in network auto-selection mode(5G/4G/3G/2G)

<b>Kashipur Railway Station</b>				
<b>Parameters</b>	<b>Service Provider</b>			
	<b>Auto-selection mode (5G/4G/3G/2G)</b>			
	<b>AIRTEL</b>	<b>BSNL</b>	<b>RJIL</b>	<b>VIL</b>
<b>Call Attempt</b>	10	10	10	10
<b>Call Setup Success Rate %</b>	100.00	80.00	100.00	100.00
<b>Drop Call Rate %</b>	0.00	0.00	0.00	0.00
<b>Call Setup Time-Average (Second)</b>	1.25	2.05	0.54	0.55

**Table-27:** Summary of voice call performance in network auto-selection mode(5G/4G/3G/2G)

<b>KVR Hospital Kashipur</b>				
<b>Parameters</b>	<b>Service Provider</b>			
	<b>Auto-selection mode (5G/4G/3G/2G)</b>			
	<b>AIRTEL</b>	<b>BSNL</b>	<b>RJIL</b>	<b>VIL</b>
<b>Call Attempt</b>	10	10	10	10
<b>Call Setup Success Rate %</b>	100.00	100.00	100.00	100.00
<b>Drop Call Rate %</b>	0.00	10.00	0.00	0.00
<b>Call Setup Time-Average (Second)</b>	1.30	2.97	0.57	0.54

**Table-28:** Summary of voice call performance in network auto-selection mode(5G/4G/3G/2G)

<b>Maa Bal Sundari Temple Kashipur</b>				
<b>Parameters</b>	<b>Service Provider</b>			
	<b>Auto-selection mode (5G/4G/3G/2G)</b>			
	<b>AIRTEL</b>	<b>BSNL</b>	<b>RJIL</b>	<b>VIL</b>
<b>Call Attempt</b>	10	10	10	10
<b>Call Setup Success Rate %</b>	100.00	100.00	100.00	100.00
<b>Drop Call Rate %</b>	0.00	0.00	0.00	0.00
<b>Call Setup Time-Average (Second)</b>	1.42	2.03	0.55	0.56

**Table-29:** Summary of voice call performance in network auto-selection mode(5G/4G/3G/2G)

<b>MB PG Inter College Haldwani</b>				
<b>Parameters</b>	<b>Service Provider</b>			
	<b>Auto-selection mode (5G/4G/3G/2G)</b>			
	<b>AIRTEL</b>	<b>BSNL</b>	<b>RJIL</b>	<b>VIL</b>
<b>Call Attempt</b>	10	10	10	10
<b>Call Setup Success Rate %</b>	100.00	100.00	100.00	100.00
<b>Drop Call Rate %</b>	0.00	0.00	0.00	0.00
<b>Call Setup Time-Average (Second)</b>	7.06	2.88	0.52	0.56

**Table-30:** Summary of voice call performance in network auto-selection mode(5G/4G/3G/2G)

<b>Metropolis mall Rudrapur</b>				
<b>Parameters</b>	<b>Service Provider</b>			
	<b>Auto-selection mode (5G/4G/3G/2G)</b>			
	<b>AIRTEL</b>	<b>BSNL</b>	<b>RJIL</b>	<b>VIL</b>
<b>Call Attempt</b>	10	10	10	10
<b>Call Setup Success Rate %</b>	100.00	100.00	100.00	100.00
<b>Drop Call Rate %</b>	10.00	0.00	0.00	0.00
<b>Call Setup Time-Average (Second)</b>	1.70	2.16	0.65	0.56

**Table-31:** Summary of voice call performance in network auto-selection mode(5G/4G/3G/2G)

<b>Pantnagar Airport</b>				
<b>Parameters</b>	<b>Service Provider</b>			
	<b>Auto-selection mode (5G/4G/3G/2G)</b>			
	<b>AIRTEL</b>	<b>BSNL</b>	<b>RJIL</b>	<b>VIL</b>
<b>Call Attempt</b>	10	10	10	10
<b>Call Setup Success Rate %</b>	100.00	90.00	100.00	100.00
<b>Drop Call Rate %</b>	0.00	11.11	0.00	0.00
<b>Call Setup Time-Average (Second)</b>	1.23	2.46	0.59	0.57

**Table-32:** Summary of voice call performance in network auto-selection mode(5G/4G/3G/2G)

<b>Rudrapur Bus Depot</b>				
<b>Parameters</b>	<b>Service Provider</b>			
	<b>Auto-selection mode (5G/4G/3G/2G)</b>			
	<b>AIRTEL</b>	<b>BSNL</b>	<b>RJIL</b>	<b>VIL</b>
<b>Call Attempt</b>	10	10	10	10
<b>Call Setup Success Rate %</b>	100.00	80.00	100.00	100.00
<b>Drop Call Rate %</b>	0.00	0.00	0.00	0.00
<b>Call Setup Time-Average (Second)</b>	1.41	2.66	0.58	0.52

**Table-33:** Summary of voice call performance in network auto-selection mode(5G/4G/3G/2G)

<b>Rudrapur City Railway Station</b>				
<b>Parameters</b>	<b>Service Provider</b>			
	<b>Auto-selection mode (5G/4G/3G/2G)</b>			
	<b>AIRTEL</b>	<b>BSNL</b>	<b>RJIL</b>	<b>VIL</b>
<b>Call Attempt</b>	10	10	10	10
<b>Call Setup Success Rate %</b>	100.00	0.00	100.00	100.00
<b>Drop Call Rate %</b>	0.00	-	0.00	0.00
<b>Call Setup Time-Average (Second)</b>	1.24	-	0.57	0.53

**Table-34:** Summary of voice call performance in network auto-selection mode(5G/4G/3G/2G)

**Note-**-"Call setup time & drop call rate have not been reported as all calls were failed at this location.

<b>SBS Government PG College Rudrapur</b>				
<b>Parameters</b>	<b>Service Provider</b>			
	<b>Auto-selection mode (5G/4G/3G/2G)</b>			
	<b>AIRTEL</b>	<b>BSNL</b>	<b>RJIL</b>	<b>VIL</b>
<b>Call Attempt</b>	10	10	10	10
<b>Call Setup Success Rate %</b>	100.00	100.00	100.00	100.00
<b>Drop Call Rate %</b>	0.00	0.00	0.00	0.00
<b>Call Setup Time-Average (Second)</b>	1.17	1.92	0.57	0.62

**Table-35:** Summary of voice call performance in network auto-selection mode(5G/4G/3G/2G)

#### 4.3.4 Data performance (Auto-selection mode 5G/4G/3G/2G)

<b>Overall Data Performance</b>				
<b>Parameters</b>	<b>Service Provider</b>			
	<b>Auto-selection mode (5G/4G/3G/2G)</b>			
	<b>AIRTEL</b>	<b>BSNL</b>	<b>RJIL</b>	<b>VIL</b>
<b>Download Throughput Average (Mbits/s)</b>	157.36	11.73	308.20	64.71
<b>Download Throughput 80th Percentile (Mbit/s)</b>	208.14	18.03	525.49	96.46
<b>Download Throughput 20th Percentile (Mbit/s)</b>	86.09	5.61	128.64	11.55
<b>Download Session Setup Success Rate %</b>	100.00	94.29	100.00	100.00
<b>Upload Throughput Average (Mbits/s)</b>	31.02	3.99	32.77	13.28
<b>Upload Throughput 80th Percentile (Mbit/s)</b>	46.76	6.96	65.72	20.50
<b>Upload Throughput 20th Percentile (Mbit/s)</b>	10.67	1.51	7.27	3.21
<b>Upload Session Setup Success Rate %</b>	100.00	95.71	100.00	100.00
<b>Web Browsing Delay (Second)</b>	3.73	4.66	3.11	4.58
<b>Youtube Initial Buffer Delay (Second)</b>	0.97	1.91	1.25	1.76
<b>Latency (ms) - 50th Percentile</b>	45.04	28.48	21.66	35.54
<b>Jitter (ms)</b>	8.59	92.77	5.05	7.13
<b>Packet Loss Rate%</b>	12.15	5.35	0.12	1.83
<b>Packet Loss Rate- 90th percentile</b>	59.54	9.44	0.40	1.86

**Table-36:** Overall Summary of Data performance in network auto-selection mode (5G/4G/3G/2G).

<b>District &amp; Session Court Rudrapur</b>				
<b>Parameters</b>	<b>Service Provider</b>			
	<b>Auto-Selection Mode (5G/4G/3G/2G)</b>			
	<b>AIRTEL</b>	<b>BSNL</b>	<b>RJIL</b>	<b>VIL</b>
<b>Download Throughput Average (Mbits/s)</b>	153.46	14.77	686.95	1.15
<b>Download Session Setup Success Rate %</b>	100.00	100.00	100.00	100.00
<b>Upload Throughput Average (Mbits/s)</b>	17.68	6.48	66.54	3.03
<b>Upload Session Setup Success Rate %</b>	100.00	100.00	100.00	100.00
<b>Web Browsing Delay (Second)</b>	4.33	5.79	2.45	2.63
<b>Youtube Initial Buffer Delay (Second)</b>	0.94	0.83	0.57	2.85
<b>Latency (ms) - 50th Percentile</b>	44.66	26.36	20.05	37.53
<b>Jitter (ms)</b>	6.13	3.49	2.31	18.29
<b>Packet Loss Rate%</b>	2.70	1.40	0.30	20.50

**Table-37:** Summary of Data performance in network auto-selection mode (5G/4G/3G/2G).

<b>Government Medical College Haldwani</b>				
<b>Parameters</b>	<b>Service Provider</b>			
	<b>Auto-Selection Mode (5G/4G/3G/2G)</b>			
	<b>AIRTEL</b>	<b>BSNL</b>	<b>RJIL</b>	<b>VIL</b>
<b>Download Throughput Average (Mbits/s)</b>	128.81	11.02	290.65	105.38
<b>Download Session Setup Success Rate %</b>	100.00	100.00	100.00	100.00
<b>Upload Throughput Average (Mbits/s)</b>	13.33	2.43	18.81	18.60
<b>Upload Session Setup Success Rate %</b>	100.00	100.00	100.00	100.00
<b>Web Browsing Delay (Second)</b>	3.70	5.37	2.67	4.80
<b>Youtube Initial Buffer Delay (Second)</b>	1.37	3.24	0.55	0.85
<b>Latency (ms) - 50th Percentile</b>	39.36	29.86	19.98	33.04
<b>Jitter (ms)</b>	12.62	2.21	2.78	5.49
<b>Packet Loss Rate%</b>	47.00	0.60	0.00	0.20

**Table-38:** Summary of Data performance in network auto-selection mode (5G/4G/3G/2G).

<b>Government Medical College Rudrapur</b>				
<b>Parameters</b>	<b>Service Provider</b>			
	<b>Auto-Selection Mode (5G/4G/3G/2G)</b>			
	<b>AIRTEL</b>	<b>BSNL</b>	<b>RJIL</b>	<b>VIL</b>
<b>Download Throughput Average (Mbits/s)</b>	192.66	4.71	265.91	2.38
<b>Download Session Setup Success Rate %</b>	100.00	100.00	100.00	100.00
<b>Upload Throughput Average (Mbits/s)</b>	22.81	1.65	16.19	1.43
<b>Upload Session Setup Success Rate %</b>	100.00	100.00	100.00	100.00
<b>Web Browsing Delay (Second)</b>	2.75	4.20	2.67	2.76
<b>Youtube Initial Buffer Delay (Second)</b>	0.68	-	0.57	3.97
<b>Latency (ms) - 50<sup>th</sup> Percentile</b>	42.34	165.26	20.67	38.11
<b>Jitter (ms)</b>	5.34	1347.08	2.52	3.09
<b>Packet Loss Rate%</b>	41.60	28.70	0.00	0.90

**Table-39:** Summary of Data performance in network auto-selection mode (5G/4G/3G/2G).

**Note-** "--Youtube tests were failed.

<b>Haldwani Bus Stand</b>				
<b>Parameters</b>	<b>Service Provider</b>			
	<b>Auto-Selection Mode (5G/4G/3G/2G)</b>			
	<b>AIRTEL</b>	<b>BSNL</b>	<b>RJIL</b>	<b>VIL</b>
<b>Download Throughput Average (Mbits/s)</b>	79.70	15.68	582.67	27.22
<b>Download Session Setup Success Rate %</b>	100.00	100.00	100.00	100.00
<b>Upload Throughput Average (Mbits/s)</b>	14.15	8.90	69.42	4.48
<b>Upload Session Setup Success Rate %</b>	100.00	100.00	100.00	100.00
<b>Web Browsing Delay (Second)</b>	2.68	4.70	2.53	3.17
<b>Youtube Initial Buffer Delay (Second)</b>	1.03	0.95	0.52	3.79
<b>Latency (ms) - 50th Percentile</b>	49.06	24.39	24.06	38.90
<b>Jitter (ms)</b>	20.53	1.89	3.06	4.71
<b>Packet Loss Rate%</b>	0.70	0.00	0.10	1.20

**Table-40:** Summary of Data performance in network auto-selection mode (5G/4G/3G/2G).

<b>Kashipur Bus Depot</b>				
<b>Parameters</b>	<b>Service Provider</b>			
	<b>Auto-Selection Mode (5G/4G/3G/2G)</b>			
	<b>AIRTEL</b>	<b>BSNL</b>	<b>RJIL</b>	<b>VIL</b>
<b>Download Throughput Average (Mbits/s)</b>	188.42	10.45	474.74	61.63
<b>Download Session Setup Success Rate%</b>	100.00	100.00	100.00	100.00
<b>Upload Throughput Average (Mbits/s)</b>	35.50	2.33	18.09	10.49
<b>Upload Session Setup Success Rate %</b>	100.00	100.00	100.00	100.00
<b>Web Browsing Delay (Second)</b>	4.46	3.31	2.70	5.80
<b>Youtube Initial Buffer Delay (Second)</b>	0.57	1.79	0.60	0.80
<b>Latency (ms)- 50th Percentile</b>	49.14	27.75	22.34	38.23
<b>Jitter (ms)</b>	9.64	3.00	3.93	4.67
<b>Packet Loss Rate%</b>	0.10	0.10	0.20	0.20

**Table-41:** Summary of Data performance in network auto-selection mode (5G/4G/3G/2G).

<b>Kashipur Railway Station</b>				
<b>Parameters</b>	<b>Service Provider</b>			
	<b>Auto-Selection Mode (5G/4G/3G/2G)</b>			
	<b>AIRTEL</b>	<b>BSNL</b>	<b>RJIL</b>	<b>VIL</b>
<b>Download Throughput Average (Mbits/s)</b>	135.47	4.12	136.18	41.64
<b>Download Session Setup Success Rate%</b>	100.00	100.00	100.00	100.00
<b>Upload Throughput Average (Mbits/s)</b>	29.17	1.36	65.92	17.43
<b>Upload Session Setup Success Rate %</b>	100.00	100.00	100.00	100.00
<b>Web Browsing Delay (Second)</b>	2.85	9.29	3.29	4.86
<b>Youtube Initial Buffer Delay (Second)</b>	0.63	-	2.27	0.81
<b>Latency (ms)- 50th Percentile</b>	60.98	30.97	22.98	36.20
<b>Jitter (ms)</b>	11.58	2.10	4.72	4.79
<b>Packet Loss Rate%</b>	24.80	0.10	0.00	0.00

**Table-42:** Summary of Data performance in network auto-selection mode (5G/4G/3G/2G).

**Note-** "--"Youtube tests were failed.

<b>KVR Hospital Kashipur</b>				
<b>Parameters</b>	<b>Service Provider</b>			
	<b>Auto-Selection Mode (5G/4G/3G/2G)</b>			
	<b>AIRTEL</b>	<b>BSNL</b>	<b>RJIL</b>	<b>VIL</b>
<b>Download Throughput Average (Mbits/s)</b>	135.09	15.19	168.34	39.15
<b>Download Session Setup Success Rate%</b>	100.00	100.00	100.00	100.00
<b>Upload Throughput Average (Mbits/s)</b>	16.99	2.39	4.82	7.23
<b>Upload Session Setup Success Rate %</b>	100.00	100.00	100.00	100.00
<b>Web Browsing Delay (Second)</b>	4.04	2.96	3.21	4.85
<b>Youtube Initial Buffer Delay (Second)</b>	0.54	2.93	2.41	0.84
<b>Latency (ms)- 50th Percentile</b>	50.79	25.73	21.92	36.72
<b>Jitter (ms)</b>	6.95	3.21	13.78	7.45
<b>Packet Loss Rate%</b>	4.70	0.10	0.20	0.10

**Table-43:** Summary of Data performance in network auto-selection mode (5G/4G/3G/2G).

<b>Maa Bal Sundari Temple Kashipur</b>				
<b>Parameters</b>	<b>Service Provider</b>			
	<b>Auto-Selection Mode (5G/4G/3G/2G)</b>			
	<b>AIRTEL</b>	<b>BSNL</b>	<b>RJIL</b>	<b>VIL</b>
<b>Download Throughput Average (Mbits/s)</b>	20.13	6.24	130.27	15.31
<b>Download Session Setup Success Rate%</b>	100.00	80.00	100.00	100.00
<b>Upload Throughput Average (Mbits/s)</b>	5.80	1.20	2.95	3.75
<b>Upload Session Setup Success Rate %</b>	100.00	100.00	100.00	100.00
<b>Web Browsing Delay (Second)</b>	7.30	11.95	3.47	6.53
<b>Youtube Initial Buffer Delay (Second)</b>	1.57	-	2.81	1.76
<b>Latency (ms)- 50th Percentile</b>	45.90	36.19	22.83	36.07
<b>Jitter (ms)</b>	5.06	5.52	5.26	28.08
<b>Packet Loss Rate%</b>	0.80	1.50	0.00	0.20

**Table-44:** Summary of Data performance in network auto-selection mode (5G/4G/3G/2G).

**Note-** "--"Youtube tests were failed.

<b>MB PG Inter College Haldwani</b>				
<b>Parameters</b>	<b>Service Provider</b>			
	<b>Auto-Selection Mode (5G/4G/3G/2G)</b>			
	<b>AIRTEL</b>	<b>BSNL</b>	<b>RJIL</b>	<b>VIL</b>
<b>Download Throughput Average (Mbits/s)</b>	111.04	5.17	38.75	19.41
<b>Download Session Setup Success Rate%</b>	100.00	100.00	100.00	100.00
<b>Upload Throughput Average (Mbits/s)</b>	15.45	5.11	12.32	10.96
<b>Upload Session Setup Success Rate %</b>	100.00	100.00	100.00	100.00
<b>Web Browsing Delay (Second)</b>	3.49	2.04	3.98	5.25
<b>Youtube Initial Buffer Delay (Second)</b>	0.69	1.51	0.76	0.97
<b>Latency (ms)- 50th Percentile</b>	53.52	30.41	21.12	35.22
<b>Jitter (ms)</b>	11.40	3.32	4.18	4.05
<b>Packet Loss Rate%</b>	0.30	5.80	0.00	1.80

**Table-45:** Summary of Data performance in network auto-selection mode (5G/4G/3G/2G).

<b>Metropolis mall Rudrapur</b>				
<b>Parameters</b>	<b>Service Provider</b>			
	<b>Auto-Selection Mode (5G/4G/3G/2G)</b>			
	<b>AIRTEL</b>	<b>BSNL</b>	<b>RJIL</b>	<b>VIL</b>
<b>Download Throughput Average (Mbits/s)</b>	216.58	16.20	297.89	32.49
<b>Download Session Setup Success Rate%</b>	100.00	100.00	100.00	100.00
<b>Upload Throughput Average (Mbits/s)</b>	54.59	3.41	40.76	16.67
<b>Upload Session Setup Success Rate %</b>	100.00	100.00	100.00	100.00
<b>Web Browsing Delay (Second)</b>	2.97	4.64	2.58	3.76
<b>Youtube Initial Buffer Delay (Second)</b>	0.54	1.74	0.61	1.69
<b>Latency (ms)- 50th Percentile</b>	41.61	27.64	20.97	33.99
<b>Jitter (ms)</b>	6.55	2.66	5.65	6.50
<b>Packet Loss Rate%</b>	0.10	0.20	0.10	0.20

**Table-46:** Summary of Data performance in network auto-selection mode (5G/4G/3G/2G).

<b>Pantnagar Airport</b>				
<b>Parameters</b>	<b>Service Provider</b>			
	<b>Auto-Selection Mode (5G/4G/3G/2G)</b>			
	<b>AIRTEL</b>	<b>BSNL</b>	<b>RJIL</b>	<b>VIL</b>
<b>Download Throughput Average (Mbits/s)</b>	16.87	19.03	21.17	83.15
<b>Download Session Setup Success Rate%</b>	100.00	100.00	100.00	100.00
<b>Upload Throughput Average (Mbits/s)</b>	2.69	3.28	1.05	22.63
<b>Upload Session Setup Success Rate %</b>	100.00	100.00	100.00	100.00
<b>Web Browsing Delay (Second)</b>	7.50	5.07	7.33	5.37
<b>Youtube Initial Buffer Delay (Second)</b>	3.80	1.26	8.12	0.74
<b>Latency (ms)- 50th Percentile</b>	47.36	24.97	37.96	36.61
<b>Jitter (ms)</b>	6.05	1.82	12.16	5.39
<b>Packet Loss Rate%</b>	45.90	0.20	0.50	0.10

**Table-47:** Summary of Data performance in network auto-selection mode (5G/4G/3G/2G).

<b>Rudrapur Bus Depot</b>				
<b>Parameters</b>	<b>Service Provider</b>			
	<b>Auto-Selection Mode (5G/4G/3G/2G)</b>			
	<b>AIRTEL</b>	<b>BSNL</b>	<b>RJIL</b>	<b>VIL</b>
<b>Download Throughput Average (Mbits/s)</b>	126.15	4.45	423.07	201.81
<b>Download Session Setup Success Rate%</b>	100.00	80.00	100.00	100.00
<b>Upload Throughput Average (Mbits/s)</b>	37.55	2.78	70.73	38.38
<b>Upload Session Setup Success Rate %</b>	100.00	80.00	100.00	100.00
<b>Web Browsing Delay (Second)</b>	3.01	2.51	2.60	4.03
<b>Youtube Initial Buffer Delay (Second)</b>	0.70	2.13	0.70	2.82
<b>Latency (ms)- 50th Percentile</b>	37.34	28.21	20.07	24.45
<b>Jitter (ms)</b>	10.46	2.10	2.71	1.90
<b>Packet Loss Rate%</b>	1.30	0.60	0.10	0.10

**Table-48:** Summary of Data performance in network auto-selection mode (5G/4G/3G/2G).

Rudrapur City Railway Station				
Parameters	Service Provider			
	Auto-Selection Mode (5G/4G/3G/2G)			
	AIRTEL	BSNL	RJIL	VIL
Download Throughput Average (Mbits/s)	493.33	4.48	196.87	233.11
Download Session Setup Success Rate%	100.00	60.00	100.00	100.00
Upload Throughput Average (Mbits/s)	86.43	8.13	15.12	25.79
Upload Session Setup Success Rate %	100.00	60.00	100.00	100.00
Web Browsing Delay (Second)	2.86	6.34	3.14	5.12
Youtube Initial Buffer Delay (Second)	0.50	5.21	0.83	0.78
Latency (ms)- 50th Percentile	36.55	49.75	19.74	26.59
Jitter (ms)	3.41	4.10	4.13	1.69
Packet Loss Rate%	0.00	35.60	0.20	0.00

**Table-49:** Summary of Data performance in network auto-selection mode (5G/4G/3G/2G).

SBS Government PG College Rudrapur				
Parameters	Service Provider			
	Auto-Selection Mode (5G/4G/3G/2G)			
	AIRTEL	BSNL	RJIL	VIL
Download Throughput Average (Mbits/s)	205.32	27.24	601.34	42.09
Download Session Setup Success Rate%	100.00	100.00	100.00	100.00
Upload Throughput Average (Mbits/s)	82.19	7.77	56.11	5.04
Upload Session Setup Success Rate %	100.00	100.00	100.00	100.00
Web Browsing Delay (Second)	2.51	5.53	2.31	3.10
Youtube Initial Buffer Delay (Second)	0.91	0.85	1.68	1.91
Latency (ms)- 50th Percentile	41.82	26.40	19.43	30.20
Jitter (ms)	4.55	2.30	3.46	3.67
Packet Loss Rate%	0.10	0.00	0.00	0.10

**Table-50:** Summary of Data performance in network auto-selection mode (5G/4G/3G/2G).

#### 4.3.5 Data performance (5G Only & 4G Only Download & Upload Speed)

Overall Data Performance					
Parameters		Service Provider			
		AIRTEL	BSNL	RJIL	VIL
5G	Download Throughput Average (Mbits/s)	175.52	-	302.54	161.98
	Upload Throughput Average (Mbits/s)	32.16	-	29.49	21.28
4G	Download Throughput Average (Mbits/s)	23.48	10.58	54.43	29.17
	Upload Throughput Average (Mbits/s)	10.58	5.00	9.35	14.92

**Table-51:** Overall Summary of 5G only & 4G only data download & upload speed.

District & Session Court Rudrapur					
Parameters		Service Provider			
		AIRTEL	BSNL	RJIL	VIL
5G	Download Throughput Average (Mbits/s)	116.45	-	608.26	-
	Upload Throughput Average (Mbits/s)	5.30	-	65.54	-
4G	Download Throughput Average (Mbits/s)	20.08	19.03	75.31	1.29
	Upload Throughput Average (Mbits/s)	14.81	5.17	8.42	4.59

**Table-52:** Overall Summary of 5G only & 4G only data download & upload speed.

<b>Note-</b> "-"Respective technology was not observed during the test.
---

Government Medical College Haldwani					
Parameters		Service Provider			
		AIRTEL	BSNL	RJIL	VIL
5G	Download Throughput Average (Mbits/s)	231.41	-	319.14	-
	Upload Throughput Average (Mbits/s)	25.64	-	22.77	-
4G	Download Throughput Average (Mbits/s)	5.27	7.01	51.18	70.65
	Upload Throughput Average (Mbits/s)	8.40	3.99	3.52	16.91

**Table-53:** Overall Summary of 5G only & 4G only data download & upload speed.

**Note-** "-"Respective technology was not observed during the test.

Government Medical College Rudrapur					
Parameters		Service Provider			
		AIRTEL	BSNL	RJIL	VIL
5G	Download Throughput Average (Mbits/s)	172.00	-	274.01	-
	Upload Throughput Average (Mbits/s)	17.85	-	26.81	-
4G	Download Throughput Average (Mbits/s)	7.45	5.52	27.66	3.76
	Upload Throughput Average (Mbits/s)	9.37	1.75	4.23	12.07

**Table-54:** Overall Summary of 5G only & 4G only data download & upload speed.

**Note-** "-"Respective technology was not observed during the test.

Haldwani Bus Stand					
Parameters		Service Provider			
		AIRTEL	BSNL	RJIL	VIL
5G	Download Throughput Average (Mbits/s)	103.72	-	496.03	53.20
	Upload Throughput Average (Mbits/s)	17.08	-	14.88	-
4G	Download Throughput Average (Mbits/s)	5.17	17.82	107.83	13.79
	Upload Throughput Average (Mbits/s)	3.98	5.69	25.90	4.97

**Table-55:** Overall Summary of 5G only & 4G only data download & upload speed.

**Note-** "-"Respective technology was not observed during the test.

Kashipur Bus Depot					
Parameters		Service Provider			
		AIRTEL	BSNL	RJIL	VIL
5G	Download Throughput Average (Mbits/s)	165.20	-	426.91	-
	Upload Throughput Average (Mbits/s)	32.45	-	21.49	-
4G	Download Throughput Average (Mbits/s)	11.71	11.27	50.62	54.43
	Upload Throughput Average (Mbits/s)	10.78	4.27	27.80	34.82

**Table-56:** Overall Summary of 5G only & 4G only data download & upload speed.

**Note-** "-"Respective technology was not observed during the test.

Kashipur Railway Station					
Parameters		Service Provider			
		AIRTEL	BSNL	RJIL	VIL
5G	Download Throughput Average (Mbits/s)	127.29	-	183.03	-
	Upload Throughput Average (Mbits/s)	19.25	-	22.14	-
4G	Download Throughput Average (Mbits/s)	45.57	4.92	72.67	22.06
	Upload Throughput Average (Mbits/s)	15.02	4.52	5.20	4.21

**Table-57:** Overall Summary of 5G only & 4G only data download & upload speed.

**Note-** "-"Respective technology was not observed during the test.

KVR Hospital Kashipur					
Parameters		Service Provider			
		AIRTEL	BSNL	RJIL	VIL
5G	Download Throughput Average (Mbits/s)	172.01	-	137.17	-
	Upload Throughput Average (Mbits/s)	28.51	-	7.48	-
4G	Download Throughput Average (Mbits/s)	20.41	23.61	23.49	37.26
	Upload Throughput Average (Mbits/s)	6.32	7.51	4.77	15.51

**Table-58:** Overall Summary of 5G only & 4G only data download & upload speed.

**Note-** "-"Respective technology was not observed during the test.

Maa Bal Sundari Temple Kashipur					
Parameters		Service Provider			
		AIRTEL	BSNL	RJIL	VIL
5G	Download Throughput Average (Mbits/s)	146.08	-	117.30	-
	Upload Throughput Average (Mbits/s)	6.35	-	8.11	-
4G	Download Throughput Average (Mbits/s)	1.01	10.67	13.66	17.29
	Upload Throughput Average (Mbits/s)	6.65	4.77	1.73	4.01

**Table-59:** Overall Summary of 5G only & 4G only data download & upload speed.

**Note-** "-"Respective technology was not observed during the test.

MB PG Inter College Haldwani					
Parameters		Service Provider			
		AIRTEL	BSNL	RJIL	VIL
5G	Download Throughput Average (Mbits/s)	120.72	-	51.94	-
	Upload Throughput Average (Mbits/s)	20.00	-	20.72	-
4G	Download Throughput Average (Mbits/s)	14.48	3.60	38.71	17.54
	Upload Throughput Average (Mbits/s)	7.61	4.33	6.31	10.12

**Table-60:** Overall Summary of 5G only & 4G only data download & upload speed.

**Note-** "-"Respective technology was not observed during the test.

Metropolis mall Rudrapur					
Parameters		Service Provider			
		AIRTEL	BSNL	RJIL	VIL
5G	Download Throughput Average (Mbits/s)	212.87	-	380.60	-
	Upload Throughput Average (Mbits/s)	61.22	-	46.70	-
4G	Download Throughput Average (Mbits/s)	23.43	16.94	103.12	1.18
	Upload Throughput Average (Mbits/s)	15.42	5.28	21.76	10.23

**Table-61:** Overall Summary of 5G only & 4G only data download & upload speed.

**Note-** "-"Respective technology was not observed during the test.

Pantnagar Airport					
Parameters		Service Provider			
		AIRTEL	BSNL	RJIL	VIL
5G	Download Throughput Average (Mbits/s)	-	-	47.91	-
	Upload Throughput Average (Mbits/s)	-	-	5.75	-
4G	Download Throughput Average (Mbits/s)	97.71	16.57	38.53	49.89
	Upload Throughput Average (Mbits/s)	2.93	3.95	1.81	12.56

**Table-62:** Overall Summary of 5G only & 4G only data download & upload speed.

**Note-** "-"Respective technology was not observed during the test.

<b>Rudrapur Bus Depot</b>					
<b>Parameters</b>		<b>Service Provider</b>			
		<b>AIRTEL</b>	<b>BSNL</b>	<b>RJIL</b>	<b>VIL</b>
<b>5G</b>	<b>Download Throughput Average (Mbits/s)</b>	133.17	-	374.36	232.81
	<b>Upload Throughput Average (Mbits/s)</b>	33.52	-	70.46	28.69
<b>4G</b>	<b>Download Throughput Average (Mbits/s)</b>	23.84	2.89	62.42	33.78
	<b>Upload Throughput Average (Mbits/s)</b>	15.82	3.19	6.34	49.74

**Table-63:** Overall Summary of 5G only & 4G only data download & upload speed.

**Note-** "--Respective technology was not observed during the test.

<b>Rudrapur City Railway Station</b>					
<b>Parameters</b>		<b>Service Provider</b>			
		<b>AIRTEL</b>	<b>BSNL</b>	<b>RJIL</b>	<b>VIL</b>
<b>5G</b>	<b>Download Throughput Average (Mbits/s)</b>	426.83	-	211.85	213.70
	<b>Upload Throughput Average (Mbits/s)</b>	82.82	-	17.72	16.83
<b>4G</b>	<b>Download Throughput Average (Mbits/s)</b>	18.44	2.23	25.07	42.58
	<b>Upload Throughput Average (Mbits/s)</b>	15.07	11.80	3.48	2.38

**Table-64:** Overall Summary of 5G only & 4G only data download & upload speed.

**Note-** "--Respective technology was not observed during the test.

<b>SBS Government PG College Rudrapur</b>					
<b>Parameters</b>		<b>Service Provider</b>			
		<b>AIRTEL</b>	<b>BSNL</b>	<b>RJIL</b>	<b>VIL</b>
<b>5G</b>	<b>Download Throughput Average (Mbits/s)</b>	195.61	-	607.07	55.28
	<b>Upload Throughput Average (Mbits/s)</b>	75.28	-	62.34	-
<b>4G</b>	<b>Download Throughput Average (Mbits/s)</b>	34.18	-	71.77	42.88
	<b>Upload Throughput Average (Mbits/s)</b>	16.00	-	9.65	26.83

**Table-65:** Overall Summary of 5G only & 4G only data download & upload speed.

**Note-** "--Respective technology was not observed during the test.

## 4.4 Walk Test

Walk Test has been conducted on 7<sup>th</sup> April 2026. Two locations have been tested in the Haldwani city. (Refer Table-1)

### 4.4.1 Walk test locations



Figure-29: Walk Test locations.

### 4.4.2 Walk Test Covered

1. Chowk Bazaar Haldwani
2. Kathgodam Railway Station

### 4.4.3 Voice Performance

Chowk Bazaar Haldwani				
Parameters	Service Provider			
	Auto-selection mode (5G/4G/3G/2G)			
	AIRTEL	BSNL	RJIL	VIL
Call Attempt	15	15	15	16
Call Setup Success Rate %	100.00	100.00	100.00	100.00
Drop Call Rate %	0.00	6.67	0.00	0.00
Call Setup Time-Average (Second)	1.35	3.64	0.55	0.58

Table-66: Summary of voice call performance in network auto-selection mode (5G/4G/3G/2G).

Kathgodam Railway Station				
Parameters	Service Provider			
	Auto-selection mode (5G/4G/3G/2G)			
	AIRTEL	BSNL	RJIL	VIL
Call Attempt	12	11	12	12
Call Setup Success Rate %	100.00	100.00	100.00	100.00
Drop Call Rate %	0.00	0.00	0.00	0.00
Call Setup Time-Average (Second)	1.22	2.27	0.55	0.58

Table-67: Summary of voice call performance in network auto-selection mode (5G/4G/3G/2G).

#### 4.4.4 Data Performance

##### (a) Data Parameters (Auto-selection mode- 5G/4G/3G/2G)

<b>Chowk Bazaar Haldwani</b>				
<b>Parameters</b>	<b>Service Provider</b>			
	<b>Auto-selection mode (5G/4G/3G/2G)</b>			
	<b>AIRTEL</b>	<b>BSNL</b>	<b>RJIL</b>	<b>VIL</b>
<b>Download Throughput Average (Mbits/s)</b>	168.34	2.55	348.77	104.38
<b>Download Session Setup Success Rate %</b>	100.00	87.50	100.00	100.00
<b>Upload Throughput Average (Mbits/s)</b>	42.98	1.91	41.61	10.52
<b>Upload Session Setup Success Rate %</b>	100.00	100.00	100.00	100.00
<b>Latency (ms) - 50th Percentile</b>	47.06	57.97	21.45	34.95

**Table-68:** Summary of Data performance in network auto-selection mode (5G/4G/3G/2G).

<b>Kathgodam Railway Station</b>				
<b>Parameters</b>	<b>Service Provider</b>			
	<b>Auto-selection mode (5G/4G/3G/2G)</b>			
	<b>AIRTEL</b>	<b>BSNL</b>	<b>RJIL</b>	<b>VIL</b>
<b>Download Throughput Average (Mbits/s)</b>	192.45	12.64	228.71	42.98
<b>Download Session Setup Success Rate %</b>	100.00	100.00	100.00	100.00
<b>Upload Throughput Average (Mbits/s)</b>	40.08	5.69	28.26	15.52
<b>Upload Session Setup Success Rate %</b>	100.00	100.00	100.00	100.00
<b>Latency (ms) - 50th Percentile</b>	39.23	30.16	22.94	35.18

**Table-69:** Summary of Data performance in network auto-selection mode (5G/4G/3G/2G).

## 5. Voice & Data Key findings

### 5.1 Overall Voice

#### 1. Call Setup Success Rate:

- a) Airtel, BSNL and VIL have 95.72%, 77.72% and 96.15% call setup success rate respectively in 3G/2G network mode. (refer table-3)
- b) Airtel, BSNL, RJIL and VIL have 98.83%, 84.20%, 87.48% and 97.97% call setup success rate respectively in auto-selection mode (5G/4G/3G/2G). (refer table-5)
- c) Airtel had a 100.00% call setup success rate when calling RJIL and VIL, whereas call blocking was observed when calling BSNL. (refer table-9)
- d) BSNL had a 100.00% call setup success rate when calling VIL, whereas call blocking was observed when calling Airtel and RJIL. (refer table-9)
- e) RJIL had a 100.00% call setup success when calling Airtel, whereas call blocking was observed when calling BSNL and VIL. (refer table-9)
- f) VIL had a 100.00% call setup success when calling Airtel, whereas call blocking was observed when calling BSNL and RJIL. (refer table-9)

#### 2. Call Setup Time:

- a) Airtel, BSNL and VIL call setup time is 6.41, 2.69 & 4.57 seconds respectively in 3G/2G network mode. (refer table-3)
- b) Airtel, BSNL, RJIL & VIL call setup time is 1.38, 3.22, 1.11 & 0.63 seconds respectively in auto-selection mode (5G/4G/3G/2G). (refer table-5)

#### 3. Call Silence/Mute Rate:

In packet switched network (4G/5G) Airtel, BSNL, VIL & RJIL have 2.68%, 2.34%, 2.04% & 0.62% silence call rate respectively. Further BSNL has higher RTP packet loss rate in downlink (6.36%) compared to RJIL (1.08%) VIL (0.93%) & Airtel (0.89%). In uplink the RTP packet loss rate is higher for BSNL (6.28%) compared to RJIL (0.87%), VIL (0.64%) & Airtel (0.61%). (refer table-6)

#### 4. Drop Call Rate:

- a) Airtel, BSNL and VIL drop call rate is 1.06%, 7.76% and 0.21% respectively in 3G/2G network mode. (refer table-3)
- b) Airtel, BSNL, RJIL and VIL drop call rate is 0.44%, 5.50%, 0.47% and 0.30% respectively in auto-selection mode (5G/4G/3G/2G). (refer table-5)

### 5.2 Overall Data

#### 1. Data download and upload performance (Overall i.e. LSA):

- a) Airtel, BSNL, RJIL and VIL average download speeds are 155.72 Mbps, 9.64 Mbps, 256.59 Mbps and 48.46 Mbps respectively. (refer table-11)
- b) Airtel, BSNL, RJIL and VIL average upload speeds are 29.13 Mbps, 4.05 Mbps, 29.45 Mbps and 13.96 Mbps respectively. (refer table-11)

#### 2. Data download and upload performance (static i.e. while stationary):

- a) Airtel, BSNL, RJIL and VIL average download speeds are 157.36 Mbps, 11.73 Mbps, 308.20 Mbps and 64.71 Mbps respectively. (refer table-36)
- b) Airtel, BSNL, RJIL and VIL average upload speeds are 31.02 Mbps, 3.99 Mbps, 32.77 Mbps and 13.28 Mbps respectively. (refer table-36)

### **3. Data session setup success rate (static i.e. while stationary):**

- a) Airtel, BSNL, RJIL and VIL have 100.00%, 94.29%, 100.00% and 100.00% download session setup success rate respectively. (refer table-36)
- b) Airtel, BSNL, RJIL and VIL have 100.00%, 95.71%, 100.00% and 100.00% upload session setup success rate respectively. (refer table-36)

## **5.3 Operator wise Key Findings**

### **1. Airtel:**

#### **Voice**

- 95.72% call setup success rate and 1.06% drop call rate have been observed in 3G/2G network mode for LSA/city drive. Performance is not meeting the benchmark of 98.00% for call setup success rate. (refer table-3)
- 98.83% call setup success rate and 0.44% drop call rate have been observed in auto-selection mode (5G/4G/3G/2G) for LSA. Performance is well within the benchmark of 98.00% & 2.00% respectively. (refer table-5)
- 98.46% call setup success rate and 0.39% drop call rate have been observed in auto-selection mode (5G/4G/3G/2G) for city drive. Performance is well within the benchmark of 98.00% & 2.00% respectively. (refer table-15)
- 100.00% call setup success rate and 0.71% drop call rate have been observed in auto-selection mode (5G/4G/3G/2G) for all hotspot locations. Performance is well within the benchmark of 98.00% & 2.00% respectively. (refer table-21)
- 100.00% call setup success rate and 0.00% drop call rate have been observed in auto-selection mode (5G/4G/3G/2G) at both walk test locations. Performance is well within the benchmark of 98.00% & 2.00% respectively. (refer table-66 & 67)

#### **Data**

- Airtel has 155.72 Mbps average download speed & 29.13 Mbps average upload speed for LSA. (refer table-11)
- Airtel has 154.21 Mbps average download speed & 28.18 Mbps average upload speed across the measured routes for city drive. (refer table-19)
- Haldwani Bus Stand, Maa Bal Sundari Temple Kashipur and Pantnagar Airport have less download speed (less than 100 Mbps) out of total 14 hotspot locations for auto-selection mode (5G/4G/3G/2G). (refer table- 40, 44 & 47)
- District & Session Court Rudrapur, Government Medical College Haldwani, Haldwani Bus Stand, KVR Hospital Kashipur, Maa Bal Sundari Temple Kashipur, MB PG Inter College Haldwani and Pantnagar Airport have less upload speed (less than 20 Mbps) out of total 14 hotspot locations for auto-selection mode (5G/4G/3G/2G). (refer table- 37, 38, 40, 43, 44, 45 & 47)

### **2. BSNL:**

#### **Voice**

- 77.72% call setup success rate and 7.76% drop call rate have been observed in 3G/2G network mode for LSA/city drive. Performance is not meeting the benchmark of 98.00% & 2.00% respectively. (refer table-3)
- 84.20% call setup success rate and 5.50% drop call rate have been observed in auto-selection mode (5G/4G/3G/2G) for LSA. Performance is not meeting the benchmark of 98.00% & 2.00% respectively. (refer table-5)

- 83.10% call setup success rate and 6.36% drop call rate have been observed in auto-selection mode (5G/4G/3G/2G) for city drive. Performance is not meeting the benchmark of 98.00% & 2.00% respectively. (refer table-15)
- 85.71% call setup success rate and 2.50% drop call rate have been observed in auto-selection mode (5G/4G/3G/2G) for all hotspot locations. Performance is not meeting the benchmark of 98.00% & 2.00% respectively. (refer table-21)
- 100.00% call setup success rate and 6.67% drop call rate have been observed in auto-selection mode (5G/4G/3G/2G) at Chowk Bazaar Haldwani walktest location. Performance is not meeting the benchmark of 2.00% for drop call rate. (refer table- 66)
- 100.00% call setup success rate and 0.00% drop call rate have been observed in auto-selection mode (5G/4G/3G/2G) at Kathgodam Railway Station walktest location. Performance is well within the benchmark of 98.00% & 2.00% respectively. (refer table-67)

#### **Data**

- BSNL has 9.64 Mbps average download speed & 4.05 Mbps average upload speed for LSA. (refer table-11)
- BSNL has 9.49 Mbps average download speed & 4.09 Mbps average upload speed across the measured routes for city drive. (refer table-19)
- Government Medical College Rudrapur, Kashipur Railway Station, Maa Bal Sundari Temple Kashipur, MB PG Inter College Haldwani, Rudrapur Bus Depot and Rudrapur City Railway Station have less download speed (less than 10 Mbps) out of total 14 hotspot locations for auto-selection mode (5G/4G/3G/2G). (refer table- 39, 42, 44, 45, 48 & 49)
- Government Medical College Rudrapur, Kashipur Railway Station and Maa Bal Sundari Temple Kashipur hotspot locations have less upload speed (less than 2 Mbps) out of total 14 hotspots locations for auto-selection mode (5G/4G/3G/2G). (refer table- 39, 42, & 44)
- Chowk Bazaar Haldwani walktest location has less download speed (less than 10 Mbps) out of total 2 walktest locations for auto-selection mode (5G/4G/3G/2G). (refer table- 68)
- Chowk Bazaar Haldwani walktest location has less upload speed (less than 2 Mbps) out of total 2 walktest locations for auto-selection mode (5G/4G/3G/2G). (refer table- 68)

### **3. RJIL: Voice**

- 87.48% call setup success rate and 0.47% drop call rate have been observed in auto-selection mode (5G/4G/3G/2G) for LSA. Performance is not meeting the benchmark of 98.00% for call setup success rate. (refer table-5)
- 83.80% call setup success rate and 0.63% drop call rate have been observed in auto-selection mode (5G/4G/3G/2G) for city drive. Performance is not meeting the benchmark of 98.00% for call setup success rate. (refer table-15)
- 100.00% call setup success rate and 0.00% drop call rate have been observed in auto-selection mode (5G/4G/3G/2G) for all hotspot locations. Performance is well within the benchmark of 98.00% & 2.00% respectively. (refer table-21)

- 100.00% call setup success rate and 0.00% drop call rate have been observed in auto-selection mode (5G/4G/3G/2G) at both walk test locations. Performance is well within the benchmark of 98.00% & 2.00% respectively. (refer table-66 & 67)

#### **Data**

- RJIL has 256.59 Mbps average download speed & 29.45 Mbps average upload speed for LSA. (refer table-11)
- RJIL has 246.69 Mbps average download speed & 28.59 Mbps average upload speed across the measured routes for city drive. (refer table-19)
- MB PG Inter College Haldwani and Pantnagar Airport have less download speed (less than 100 Mbps) out of total 14 hotspot locations for auto-selection mode (5G/4G/3G/2G). (refer table- 45 & 47)
- Government Medical College Haldwani, Government Medical College Rudrapur, Kashipur Bus Depot, KVR Hospital Kashipur, Maa Bal Sundari Temple Kashipur, MB PG Inter College Haldwani, Pantnagar Airport and Rudrapur City Railway Station have less upload speed (less than 20 Mbps) out of total 14 hotspot locations for auto-selection mode (5G/4G/3G/2G). (refer table- 38, 39, 41, 43, 44, 45, 47 & 49)

#### **4. VIL: Voice**

- 96.15% call setup success rate and 0.21% drop call rate have been observed in 3G/2G network mode for LSA/city drive. Performance is not meeting the benchmark of 98.00% for call setup success rate. (refer table-3)
- 97.97% call setup success rate and 0.30% drop call rate have been observed in auto-selection mode (5G/4G/3G/2G) for LSA. Performance is not meeting the benchmark of 98.00% for call setup success rate. (refer table-5)
- 97.31% call setup success rate and 0.39% drop call rate have been observed in auto-selection mode (5G/4G/3G/2G) for city drive. Performance is not meeting the benchmark of 98.00% for call setup success rate. (refer table-15)
- 100.00% call setup success rate and 0.00% drop call rate have been observed in auto-selection mode (5G/4G/3G/2G) for all hotspot locations. Performance is well within the benchmark of 98.00% & 2.00% respectively. (refer table-21)
- 100.00% call setup success rate and 0.00% drop call rate have been observed in auto-selection mode (5G/4G/3G/2G) at both walk test locations. Performance is well within the benchmark of 98.00% & 2.00% respectively. (refer table- 66 & 67)

#### **Data**

- VIL has 48.46 Mbps average download speed & 13.96 Mbps average upload speed for LSA. (refer table-11)
- VIL has 45.15 Mbps average download speed & 14.10 Mbps average upload speed across the measured routes for city drive. (refer table-19)
- All hotspot locations have less download speed (less than 100 Mbps) except Government Medical College Haldwani, Rudrapur Bus Depot and Rudrapur City Railway Station for auto-selection mode (5G/4G/3G/2G). (refer table-37, 39, 40, 41, 42, 43, 44, 45, 46, 47 & 50)

- All hotspot locations have less upload speed (less than 20 Mbps) except Pantnagar Airport, Rudrapur Bus Depot and Rudrapur City Railway Station for auto-selection mode (5G/4G/3G/2G). (refer table-37, 38, 39, 40, 41, 42, 43, 44, 45, 46 & 50)
- Kathgodam Railway Station walktest location has less download speed (less than 100 Mbps) out of total 2 walktest locations for auto-selection mode (5G/4G/3G/2G). (refer table- 69)
- Both walktest locations have less upload speed (less than 20 Mbps) in auto-selection mode (5G/4G/3G/2G). (refer table- 68 & 69)

## 6. Annexure

### 6.1 Route wise coverage map

#### 6.1.1 City

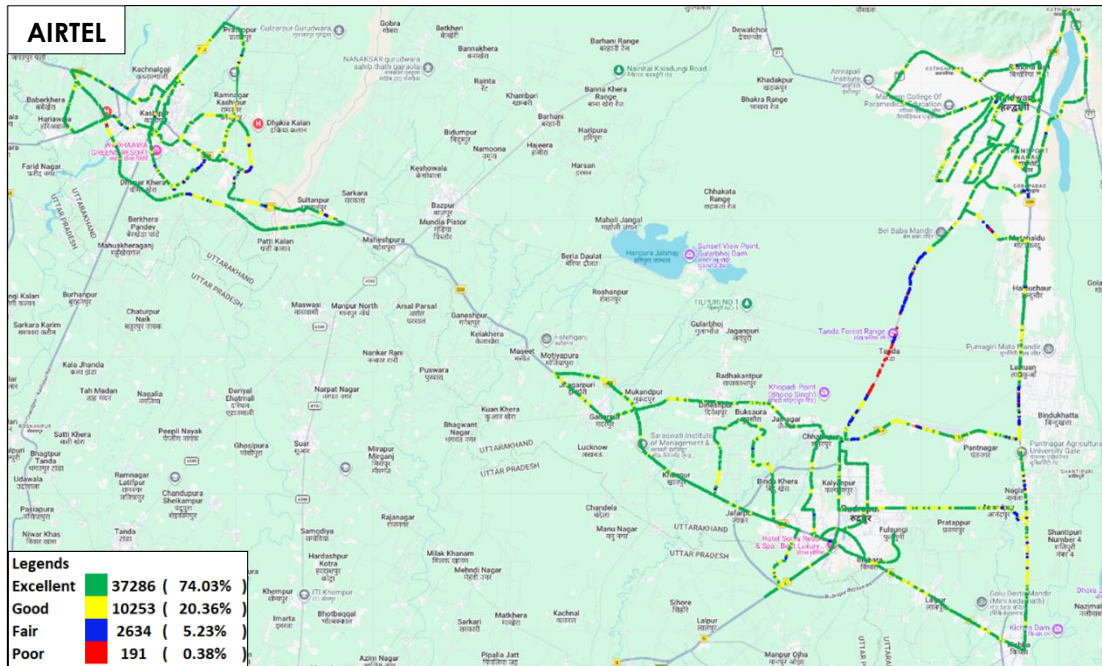


Figure-30: Signal strength 3G/2G network mode voice - AIRTEL.

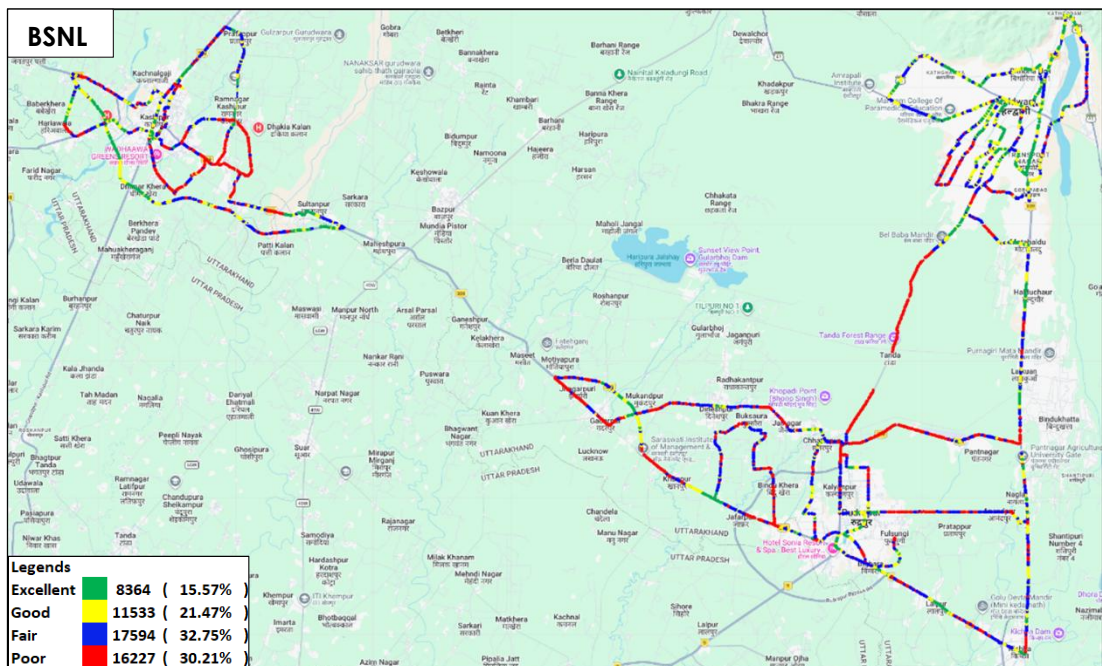
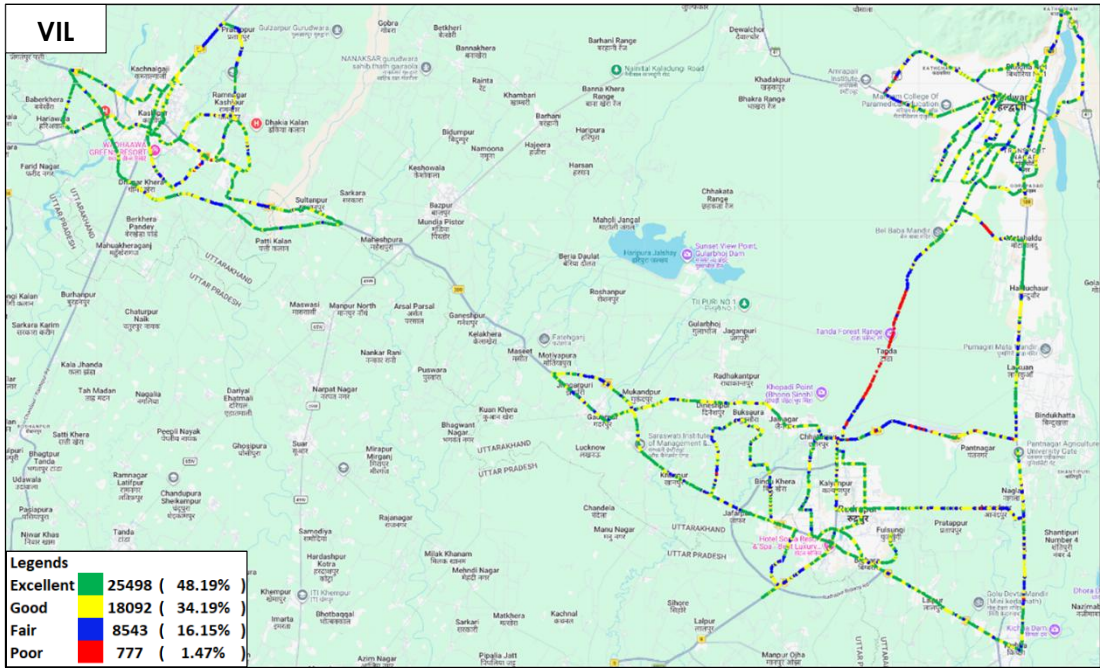
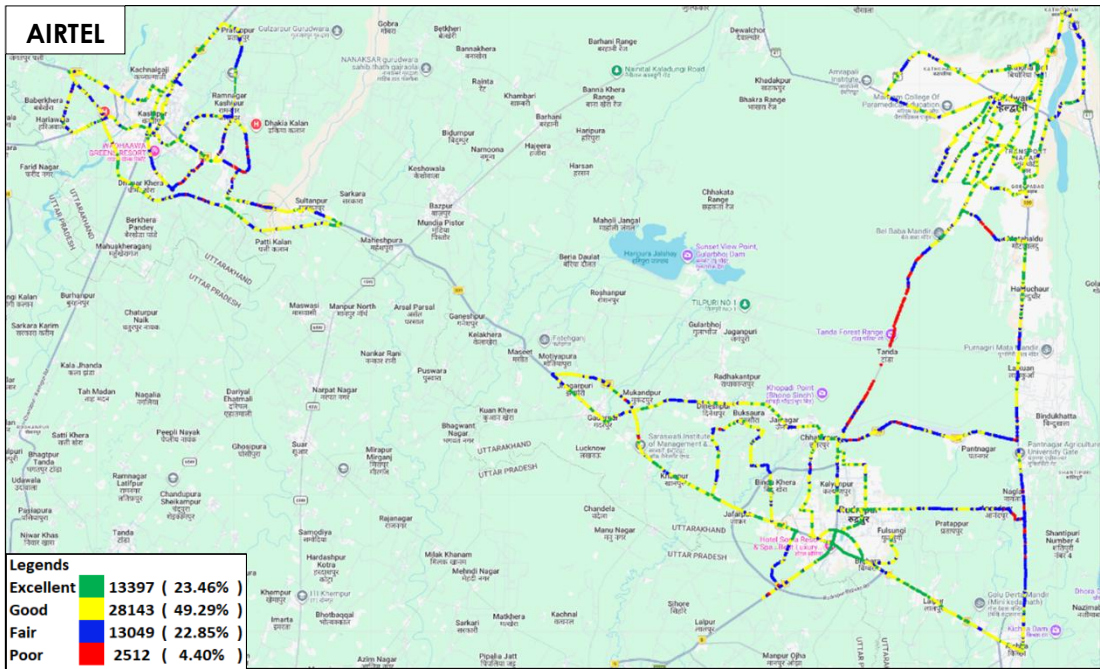


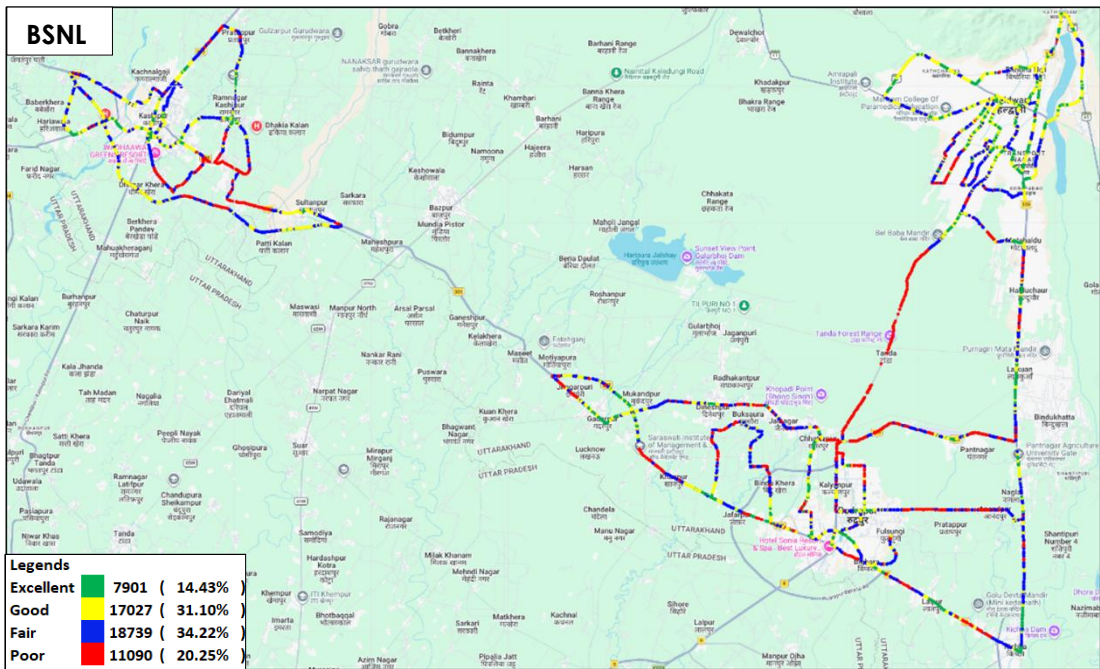
Figure-31: Signal strength 3G/2G network mode voice - BSNL.



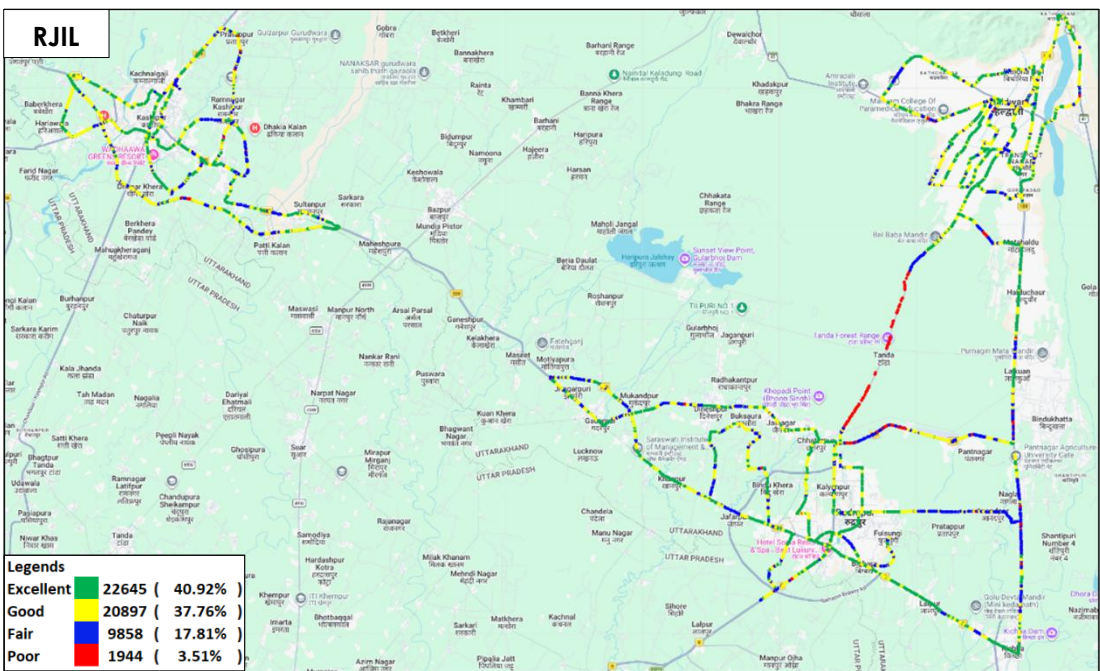
**Figure-32:** Signal strength 3G/2G network mode voice - VIL.



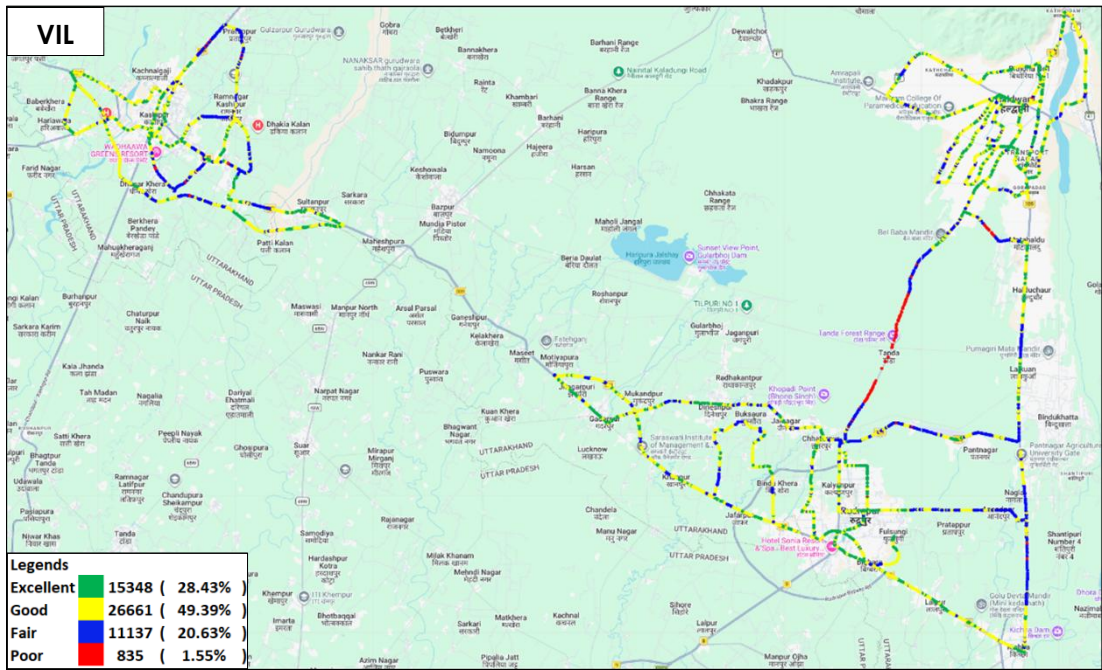
**Figure-33:** Signal strength auto-selection mode (5G/4G/3G/2G) voice - AIRTEL.



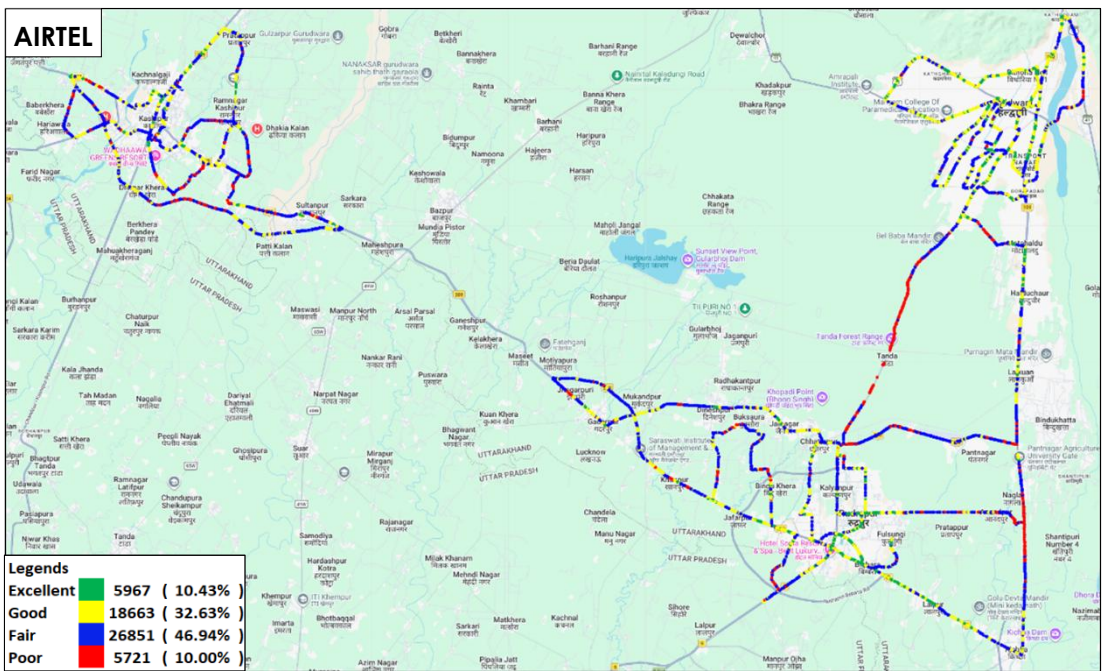
**Figure-34:** Signal strength auto-selection mode (5G/4G/3G/2G) voice - BSNL.



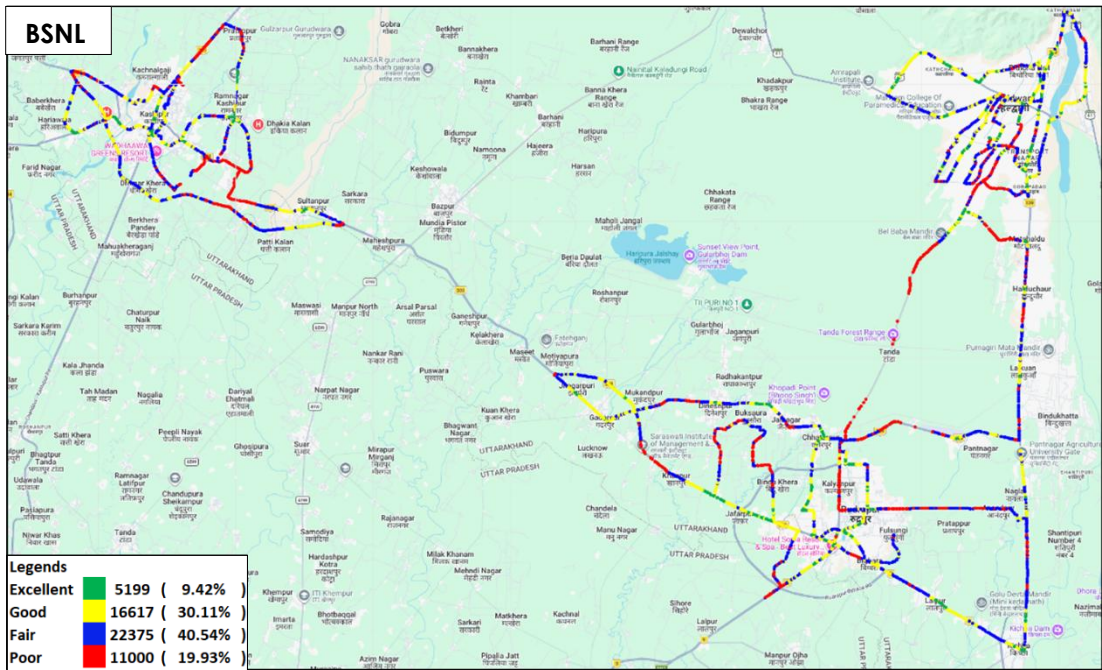
**Figure-35:** Signal strength auto-selection mode (5G/4G/3G/2G) voice - RJIL.



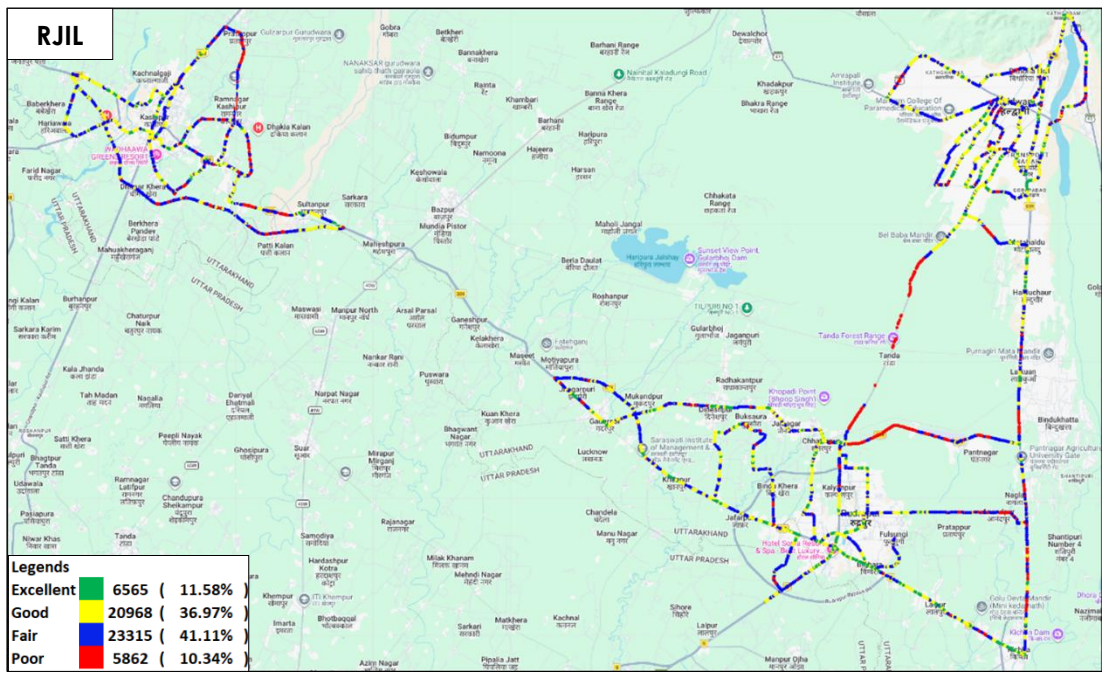
**Figure-36:** Signal strength auto-selection mode (5G/4G/3G/2G) voice - VIL.



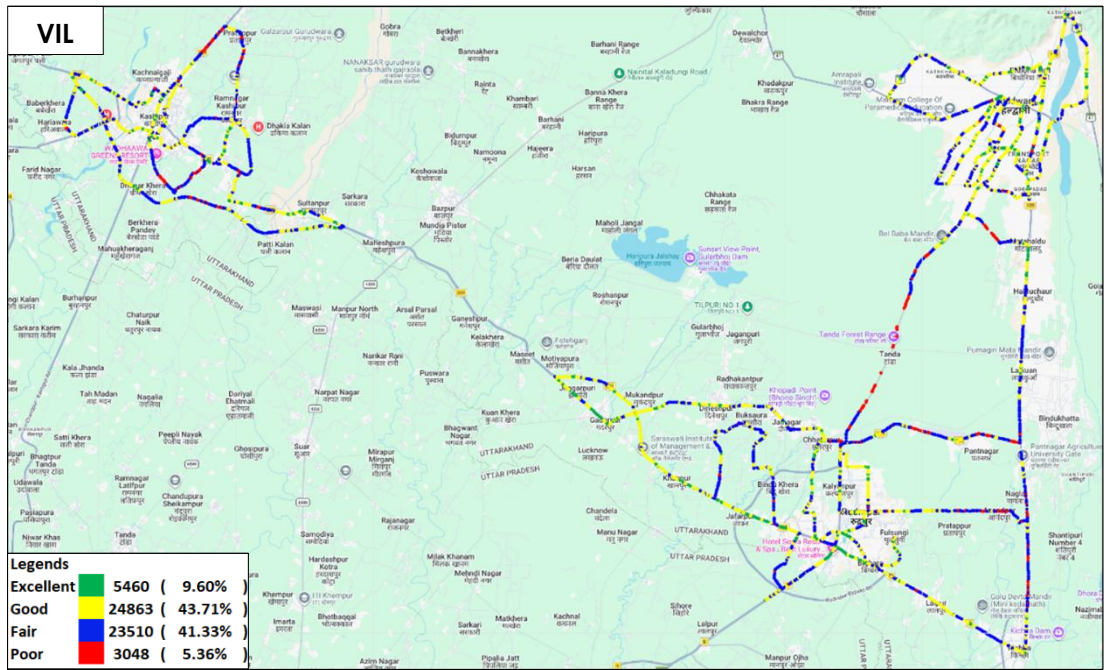
**Figure-37:** Signal strength auto-selection mode (5G/4G/3G/2G) data - AIRTEL.



**Figure-38:** Signal strength auto-selection mode (5G/4G/3G/2G) data - BSNL.



**Figure-39:** Signal strength auto-selection mode (5G/4G/3G/2G) data - RJIL.



**Figure-40:** Signal strength auto-selection mode (5G/4G/3G/2G) data - VIL.

## 7. Appendix

The details of the setup used for conducting the drive test and the network or performance parameters captured under different conditions may be seen at Appendix-I. The calculation method of each QoS parameter is given in Appendix-II of the report. The summary of key equipment used in technical setup is as under

- **Device-1:** OnePlus Nord CE3 for 3G/2G CAT-15 Smartphone.
- **Device-2:** Samsung Galaxy S23 for 5G/4G/3G/2G CAT-20 Smartphone
- **Drive test Software:** Azenqos Engineering capable Applications to capture actual user experience.

### 7.1 Appendix-I

#### 7.1.1 Drive test setup

Voice Call		
Call details	Technology	Detail
Call Setup Timeout	<ul style="list-style-type: none"> <li>• 3G/2G auto mode- switch Call</li> <li>• 5G/4G/3G/2G auto mode- switch Call</li> <li>• 5G/4G MOS Call</li> </ul>	30 Sec
Call Duration		90 seconds
Wait/ Guard Time		15 Sec

**Table-70:** Voice test detail

#### Note-

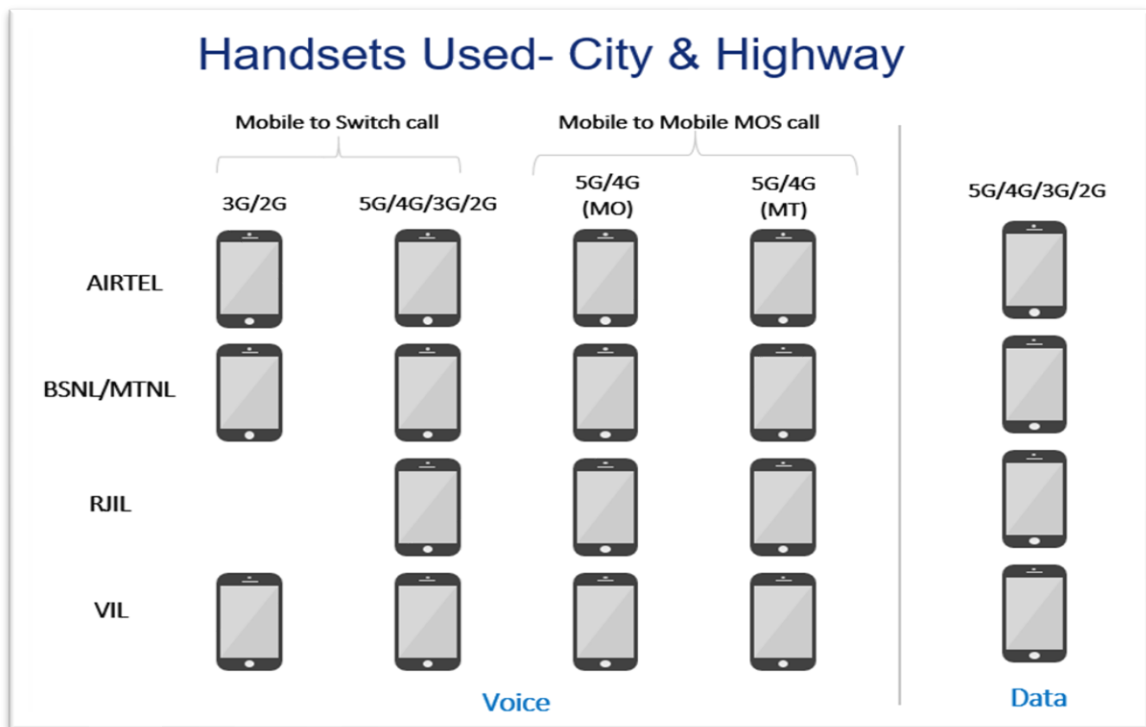
- There is 15 sec wait time after locking and before starting first call in 3G/2G call.
- 10 calls to be made at each Hotspot location.
- Minimum 10 Calls to be made during the walk test. Call count will be increased based on walk test distance.
- Speech quality (MOS) has been measured only in city drive & highway by making Mobile to Mobile call.
- 180 Sec calls were made in highway route drive.

Data Test		
Test Type	Technology	Detail
FTP/HTTP Download	5G/4G/3G/2G Auto Mode	500 MB File- 30 Sec Timeout, (Multithread 3- TCP Connection at a time)
FTP/HTTP Upload		250 MB File- 30 Sec Timeout, (Multithread 3- TCP Connection at a time)
YouTube Streaming		20 Sec Video & 25 sec Timeout (Only at Hotspot)
Web Browsing		3 popular websites ( <a href="http://www.google.co.in">www.google.co.in</a> , <a href="http://www.irctc.co.in">www.irctc.co.in</a> , <a href="http://www.sbi.bank.in">www.sbi.bank.in</a> ) 20 sec timeout (only at Hotspot)

Latency & Jitter (TWAMP-UDP)		25 count- Dynamic 500 count- Hotspot Payload- 42 bytes in all drive
Packet Loss Rate (TWAMP-UDP & TCP)		500 counts (TWAMP-UDP) 500 counts (TCP) at each hotspot Payload- 42 bytes in all drive

**Table-71:** Data test detail

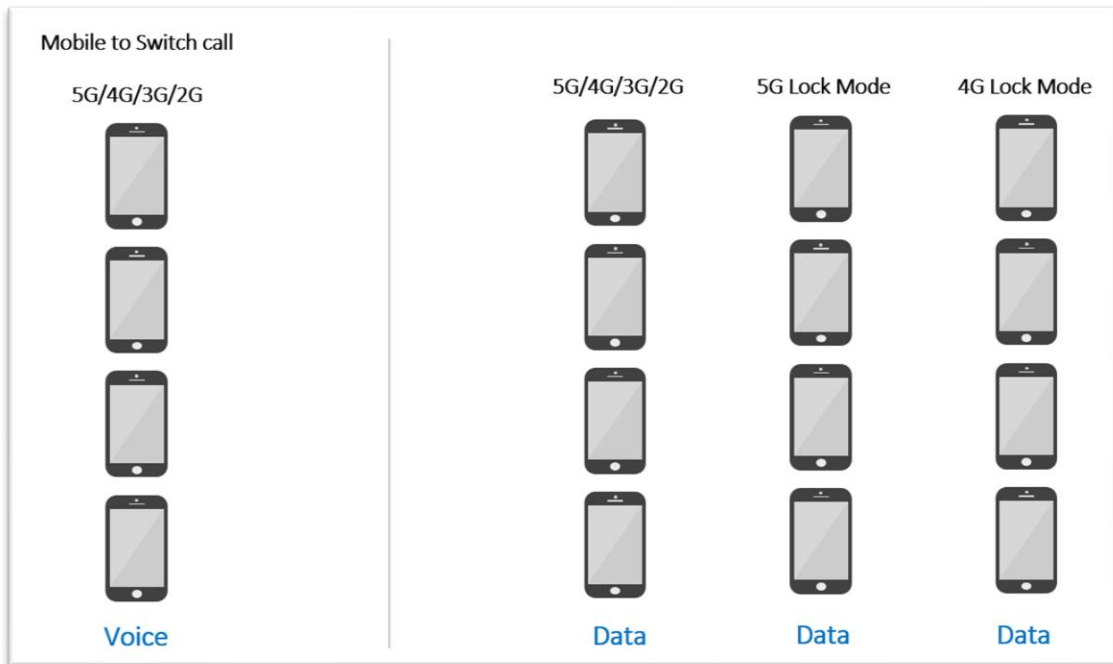
<p><b>Note-</b></p> <ul style="list-style-type: none"> <li>• 5 Data iteration to be done at each hotspot location.</li> <li>• Minimum 5 iteration to be made during the walk test. Iteration count will be increased based on walk test distance.</li> <li>• TWAMP-UDP &amp; TCP test to be performed only once at hotspot location.</li> <li>• Youtube &amp; Web browsing test to be performed at static location only.</li> <li>• All values are taken up to two decimal places with round off.</li> <li>• Airtel server was used for FTP Download, FTP Upload, TCP and TWAMP testing, for Airtel.</li> <li>• Delhi-based TRAI server was used for HTTP Download, HTTP Upload, TCP and TWAMP testing, for BSNL.</li> <li>• RJIL server was used for FTP Download, FTP Upload, TCP and TWAMP testing, for RJIL.</li> <li>• VIL server was used for HTTP Download, HTTP Upload, TCP and TWAMP testing, for VIL.</li> </ul>
--



**Figure-41:** Number of handsets used in city & highway drive

MO: Mobile originating

MT: Mobile terminating

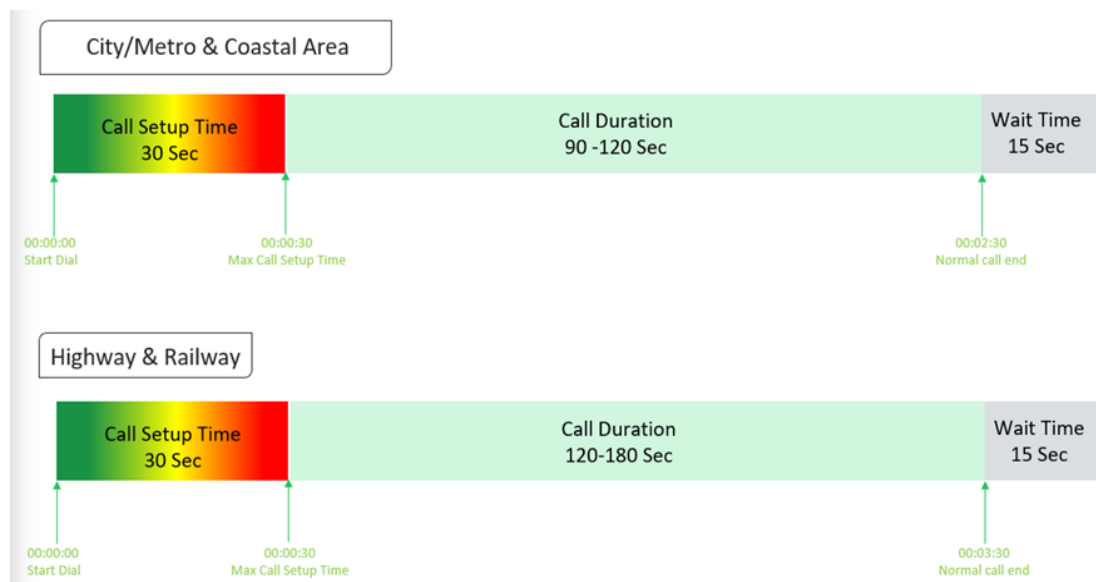


**Figure-42:** Number of handsets used in railway/metro/walktest/hotspot/ coastal area

**Note-** 5G & 4G Lock mode testing has been performed at hotspot locations only.

## 7.1.2 Drive test Methodology

### (a) Dynamic voice testing (on the move)



**Figure-43:** Voice test script for city/railway/metro/highway & coastal area

- 15 sec wait time is applied after locking Radio Access Technology (RAT) to 3G/2G and before starting first call in 3G/2G call.
- Speech quality (MOS) will be measured only City & Highway drive by making Mobile to Mobile calls.

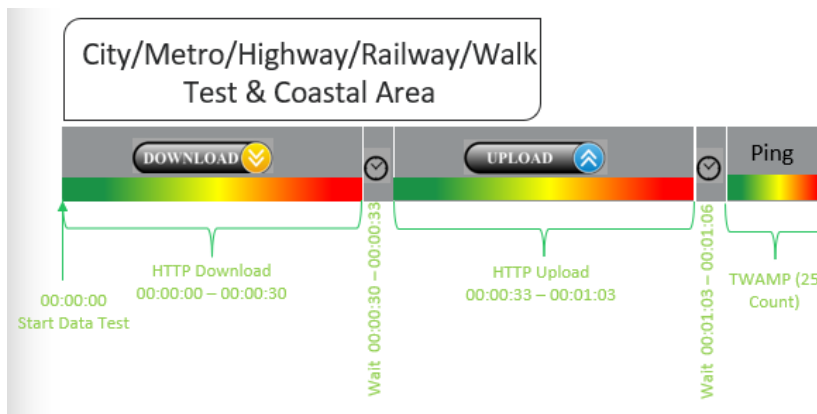
## (b) Hotspot voice testing



**Figure-44:** Voice test script for walktest/hotspot

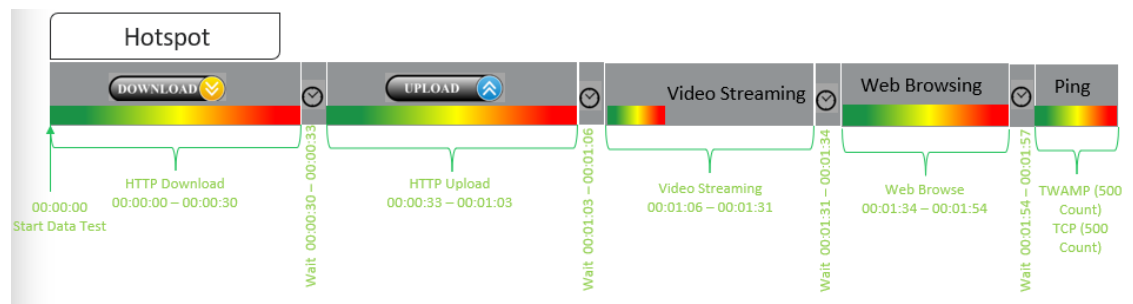
- 10 calls to be made at each Hotspot location.
- Minimum 10 Calls to be made during the walk test. Call count will be increased based on walk test distance.

## (c) Dynamic Data (internet) test



**Figure-45:** Data test script used in city/metro/railway/highway/walk test & coastal area

## (d) Static Data(internet) testing



**Figure-46:** Data test script used at hotspot

- 5 Data iteration done at each hotspot location
- Min. 5 iteration made during the walk test.
- Web browsing duration mentioned above is for one web site only.
- One ping iteration (with 500 Count of each- TWAMP & TCP) done at hotspot location.

## 7.2 Appendix-II

### 7.2.1 Network Performance Parameters for Voice calls

Parameter Name	Definition
Call Setup Success Rate	<p>(i) Call Setup Success Rate is defined as the ratio of Established Calls to Call Attempts. 'Established Calls' mean the following events have happened in call setup:</p> <ul style="list-style-type: none"> <li>(a) Call attempt is made</li> <li>(b) The signaling channel is allocated</li> <li>(c) The call is routed to the outwards path of the terminating network</li> <li>(d) An alert signal is received by caller in the form of ring back tone, busy tone, or an announcement.</li> </ul> <p>CSSR = (Total Call Established/ Total Call Attempt) *100</p> <p>As per QoS Regulation 2024 benchmark value is <b>&gt;=98%</b></p>
Drop Call Rate	<p>Call drop represents the service provider network's ability to maintain a call once it has been successfully established. This parameter shall include both incoming calls and outgoing calls which, once they have been established and have an assigned traffic channel/ bearer, are dropped, or interrupted before their normal completion by the user, the cause of the early termination being within the service provider's network</p> <p>Drop Call Rate = (Total Call Drop/Total Call Established) *100</p> <p>As per QoS Regulation 2024 benchmark value is <b>&lt;=2%</b></p>
Call Setup Time	<p>Time taken from call initiate to call alerting/ringing.</p> <p>Call Setup Time = T2- T1</p> <p>T2- Ringing (VoLTE/VoNR) &amp; Alerting (for WCDMA &amp; GSM), T1- Invite (VoLTE/VoNR) &amp; CM Service Request (for WCDMA &amp; GSM)</p>
Voice Quality (MOS)	<p>Voice quality in mobile networks is measured with algorithms based on ITU-T P.863 (POLQA). The grading for Voice quality has been given as:</p> <p>Excellent: MOS <math>\geq 4</math> and <math>&lt; 5</math>            Good : MOS <math>\geq 3</math> and <math>&lt; 4</math>            Fair : MOS <math>\geq 2</math> and <math>&lt; 3</math>            Poor : MOS <math>\geq 1</math> and <math>&lt; 2</math></p>
Handover Success Rate	<p>Handover Success Rate = Count of successful handovers (All Technology Handover combined) / Total count of Handover Attempt (All Technology Handover combined) *100</p> <p>Handover type which are considered- 2G Inter &amp; Intra cell, 3G Soft &amp; IRAT, 4G Inter &amp; Intra frequency &amp; SRVCC, 5G Inter &amp; Intra frequency &amp; 5G to 4G handovers.</p>
Silence Call	<p>A call which has <math>\geq 4</math> sec continuous RTP gap is considered as a Silence Call.</p> <p>Silence call rate = (count of silence call / Total calls established) *100</p> <p>If a call observes multiple silence count <math>\geq 4</math> sec in a particular established call it has been taken as one silent event.</p>

<b>Jitter</b>	<p>The inter arrival jitter is the difference in the relative transit time for two packets. The relative transit time is the difference between a packet's Real-time Transport Protocol (RTP) timestamp and the receiver's clock at the time of arrival, measured in the same units. If <math>S_i</math> is the RTP timestamp from packet <math>i</math>, and <math>R_i</math> is the time of arrival in RTP timestamps units for packet <math>i</math>, then for two packets <math>i</math> and <math>j</math> the inter-arrival jitter <math>D</math> can be expressed as:  <b><math>D(i,j) = (R_j - R_i) - (S_j - S_i)</math></b></p> <p>The interarrival jitter is calculated continuously as each data packet <math>i</math> is received from source <math>SSRC_n</math>, using this difference <math>D</math> for that packet and the previous packet <math>i-1</math> in order of arrival (not necessarily in sequence), according to the formula  <b><math>J(i) = J(i-1) + ( D(i-1,i)  - J(i-1))/16</math> or <b>8</b></b></p>																																		
<b>Downlink Packet Drop Rate</b>	<p>Number of RTP (Real-time Transport Protocol) Packets lost divided by total RTP packet received (against each source_SSRC and sequence number) at call originating handset. This KPI is calculated from MOS call for packet call only (VoNR/VoLTE).</p>																																		
<b>Uplink Packet Drop Rate</b>	<p>Number of RTP (Real-time Transport Protocol) Packets lost divided by total RTP packet received (against each source_SSRC and sequence number) at call terminating handset. This KPI is calculated from MOS call for packet call only (VoNR/VoLTE).</p>																																		
<b>Signal Strength</b>	<p>Signal strength is the signal power level received by the wireless user.</p> <table border="1" style="width: 100%; border-collapse: collapse; text-align: center;"> <thead> <tr> <th rowspan="2">Parameter Name</th> <th rowspan="2">Technology</th> <th colspan="4">Signal Strength (dBm)</th> </tr> <tr> <th style="background-color: #FFFF00;">Excellent</th> <th style="background-color: #FFFF00;">Good</th> <th style="background-color: #0000FF;">Fair</th> <th style="background-color: #FF0000;">Poor</th> </tr> </thead> <tbody> <tr> <td>Rx Level</td> <td>GSM</td> <td>0 to <math>\geq</math> -65</td> <td>&lt;-65 to <math>\geq</math>-75</td> <td>&lt;-75 to <math>\geq</math>-85</td> <td>&lt;-85 to min</td> </tr> <tr> <td>RSCP</td> <td>WCDMA</td> <td>0 to <math>\geq</math> -70</td> <td>&lt;-70 to <math>\geq</math>-80</td> <td>&lt;-80 to <math>\geq</math>-90</td> <td>&lt;-90 to min</td> </tr> <tr> <td>RSRP</td> <td>LTE</td> <td>0 to <math>\geq</math> -80</td> <td>&lt;-80 to <math>\geq</math>-95</td> <td>&lt;-95 to <math>\geq</math>-110</td> <td>&lt;-110 to min</td> </tr> <tr> <td>SS_RSRP</td> <td>NR</td> <td>0 to <math>\geq</math> -80</td> <td>&lt;-80 to <math>\geq</math>-95</td> <td>&lt;-95 to <math>\geq</math>-110</td> <td>&lt;-110 to min</td> </tr> </tbody> </table>	Parameter Name	Technology	Signal Strength (dBm)				Excellent	Good	Fair	Poor	Rx Level	GSM	0 to $\geq$ -65	<-65 to $\geq$ -75	<-75 to $\geq$ -85	<-85 to min	RSCP	WCDMA	0 to $\geq$ -70	<-70 to $\geq$ -80	<-80 to $\geq$ -90	<-90 to min	RSRP	LTE	0 to $\geq$ -80	<-80 to $\geq$ -95	<-95 to $\geq$ -110	<-110 to min	SS_RSRP	NR	0 to $\geq$ -80	<-80 to $\geq$ -95	<-95 to $\geq$ -110	<-110 to min
Parameter Name	Technology			Signal Strength (dBm)																															
		Excellent	Good	Fair	Poor																														
Rx Level	GSM	0 to $\geq$ -65	<-65 to $\geq$ -75	<-75 to $\geq$ -85	<-85 to min																														
RSCP	WCDMA	0 to $\geq$ -70	<-70 to $\geq$ -80	<-80 to $\geq$ -90	<-90 to min																														
RSRP	LTE	0 to $\geq$ -80	<-80 to $\geq$ -95	<-95 to $\geq$ -110	<-110 to min																														
SS_RSRP	NR	0 to $\geq$ -80	<-80 to $\geq$ -95	<-95 to $\geq$ -110	<-110 to min																														

**Table-72:** Network performance parameter and definition voice

## 7.2.2 Network Performance Parameters Data tests

Parameter Name	Definition
<b>Download Speed (Mbps)</b>	<p>The download speed is defined as the data transmission rate that is achieved for downloading a test file from a test server to a test device.</p> <p>Download Speed = Total bytes transferred during download / Total time for transfer</p> <ul style="list-style-type: none"> <li>80th percentile (upper range) &amp; 20th percentile (lower range) value has been calculated for download throughput in dynamic drive and Hotspot combine data</li> </ul>
<b>Upload Speed (Mbps)</b>	<p>The upload speed is the data transmission rate that is achieved for uploading a test file from a test device to a test server.</p> <p>Upload Speed = Total bytes transferred during upload / Total time for transfer.</p> <ul style="list-style-type: none"> <li>80th percentile (upper range) &amp; 20th percentile (lower range) value has been calculated for upload throughput in dynamic drive and Hotspot combine data.</li> </ul>
<b>Download Session Setup Success Rate</b>	<p>(total download session established (successfully connected to server)/ total download session attempt) *100. This KPI has been calculated for Hotspot only.</p>

<b>Upload Session Setup Success Rate</b>	(total upload session established (successfully connected to server)/ total upload session attempt)*100. This KPI need to report for Hotspot only.
<b>Web Page Download Time</b>	Web browsing test is used to measure performance in terms of opening a web/HTTP page. Time taken to open the web page successfully is considered as web browsing delay/web page download time.
<b>Video Streaming Delay</b>	The Video streaming delay is time taken from start of video transfer to First video frame displayed in player.
<b>Latency (TWAMP-UDP)</b>	Latency is the time it takes for a small data set to be transmitted from a device to a server on the Internet and back to the same device again. The Latency is measured in milliseconds (ms). To calculate the one-way latency, we just do half of the round-trip time. 50th percentile of one-way latency has been reported.
<b>Jitter (TWAMP-UDP)</b>	Measure of variation in time in arrival of packets from a source to destination  The consideration of packet delay jitter is considered by standard deviation of Inter Packet Delay Variation. If IPDV is used. By standard deviation is meant the average of standard deviation of IPDV on DL  $IPDV(i) = D(i) - D(i-1)$ then Stdvs of IPDV is considered as jitter.
<b>Packet Loss Rate (TWAMP-UDP &amp; TCP)</b>	Number of packets lost out of total packet transferred during test. Packet loss rate = (Total packet lost / Total packet sent) *100  * Packet delay (using TWAMP-UDP & TCP) >90 ms considered as packet loss and included in packet loss rate.  * Packet loss rate is calculated based on TWAMP-UDP & TCP.  *90 <sup>th</sup> percentile for Packet loss rate has been reported in overall Hotspot performance summary.

**Table-73:** Network performance parameter and definition Data

**Disclaimer:** The observations presented above and, in the reports, represent the performance of the service providers on the area/route under test on the day/time of conducting the drive test and no inference whatsoever may be drawn regarding the quality of the telecom service by the service providers in the whole city/state/licensed service area.