



## Operator Assisted Drive Test Report

### Hisar City & Nearby area

25<sup>th</sup> April to 27<sup>th</sup> April 2023

By

TRAI Regional office Jaipur

**Key Performance Indicators:** All TSPs have met the Drop Call Rate (DCR) benchmark of 2%. All TSPs have met the Call Setup Success Rate (CSSR) of 95%.

The Operator Assisted Drive Test has been carried out by Regional Office, Jaipur with the help of Service Providers in Hisar City & Nearby area from 9:00 AM to 8:00 PM during 25-04-2023. to 27-04-2023. The drive test covered drive route of 222 KMs & 6 no hotspots over a period of 3 days. Approximately 425 calls were made for each of the networks: three 2G networks, one 3G networks and three LTE networks covering four TSPs.

Overview

Voice Summary

Data Summary

# Overview

Regional Office, TRAI Jaipur conducted Operator Assisted Drive Test from 25<sup>th</sup> April 2023 to 27<sup>th</sup> April 2023 covering Hisar City & Nearby Area. The performance of Airtel, BSNL, Vodafone Idea and Jio was monitored across various technologies (2G, 3G and 4G). The test results obtained from these drive tests were utilized to assess the network quality for Voice and Data services.

**Voice:** Coverage, Quality, Handover Success Rate, Call Setup Success Rate, Drop Call Rate and Block Call Rate.

**Data:** Download Throughputs, Upload Throughputs, Web Browsing Delay and Latency.

## Drive Test Details :

**Voice Tests:** Calls were made for 90 sec duration with a wait time of 10 sec between calls in all technologies. The drive test covered a drive route of approximately 222 KMs. Approximately 425 calls were made for each of the networks: three 2G (Lock Mode) networks, one 3G (Dual mode) networks and three VoLTE networks covering 4 unique TSPs.

## Data Tests:

**Dynamic data test** was conducted for 95 kms for download throughput in all technologies.

2G – measurement – UE Locked in 2G file size- 500KB

3G – measurement – UE in 3G File Size- 20MB

4G – measurement – UE in LTE File Size- 40MB

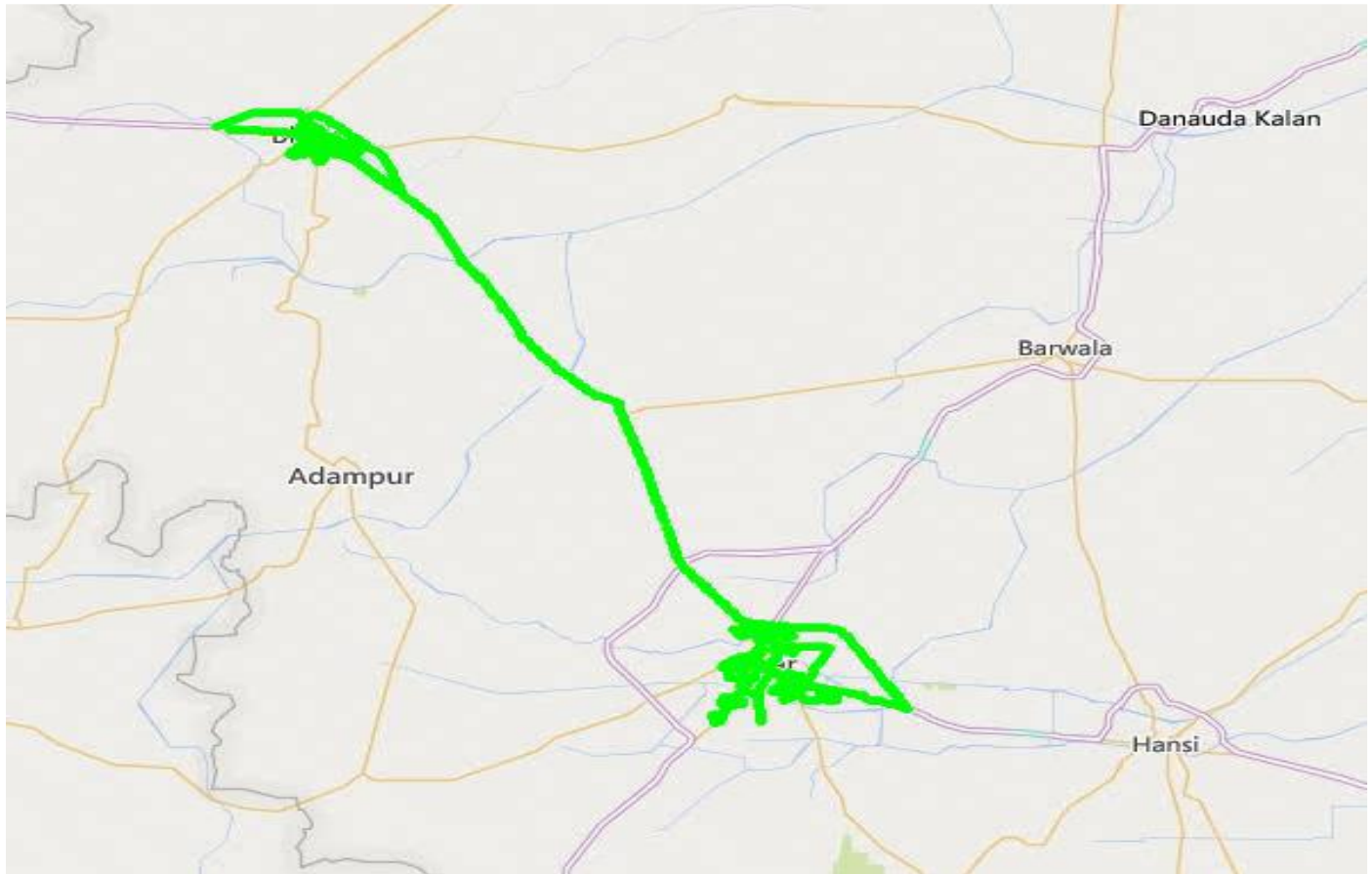
## Static data tests on 6 hotspots

1. Railway Station Hisar
2. Sun City Mall Hisar
3. Pushpa Complex
4. GJU University
5. Civil Hospital
6. Bus Stand

Service	Specifications
Download	2G (Locked) - 500KB, 3G (Dual) - 20 MB, 4G (Free) - 40 MB
Upload	2G (Locked) - 100KB, 3G (Dual) - 5 MB, 4G (Free) - 10 MB
Web Browsing	3 links of e/m commerce website www.amazon.in, www.flipkart.com and PayTm
Latency	32 Bytes on www.google.com

# Overview

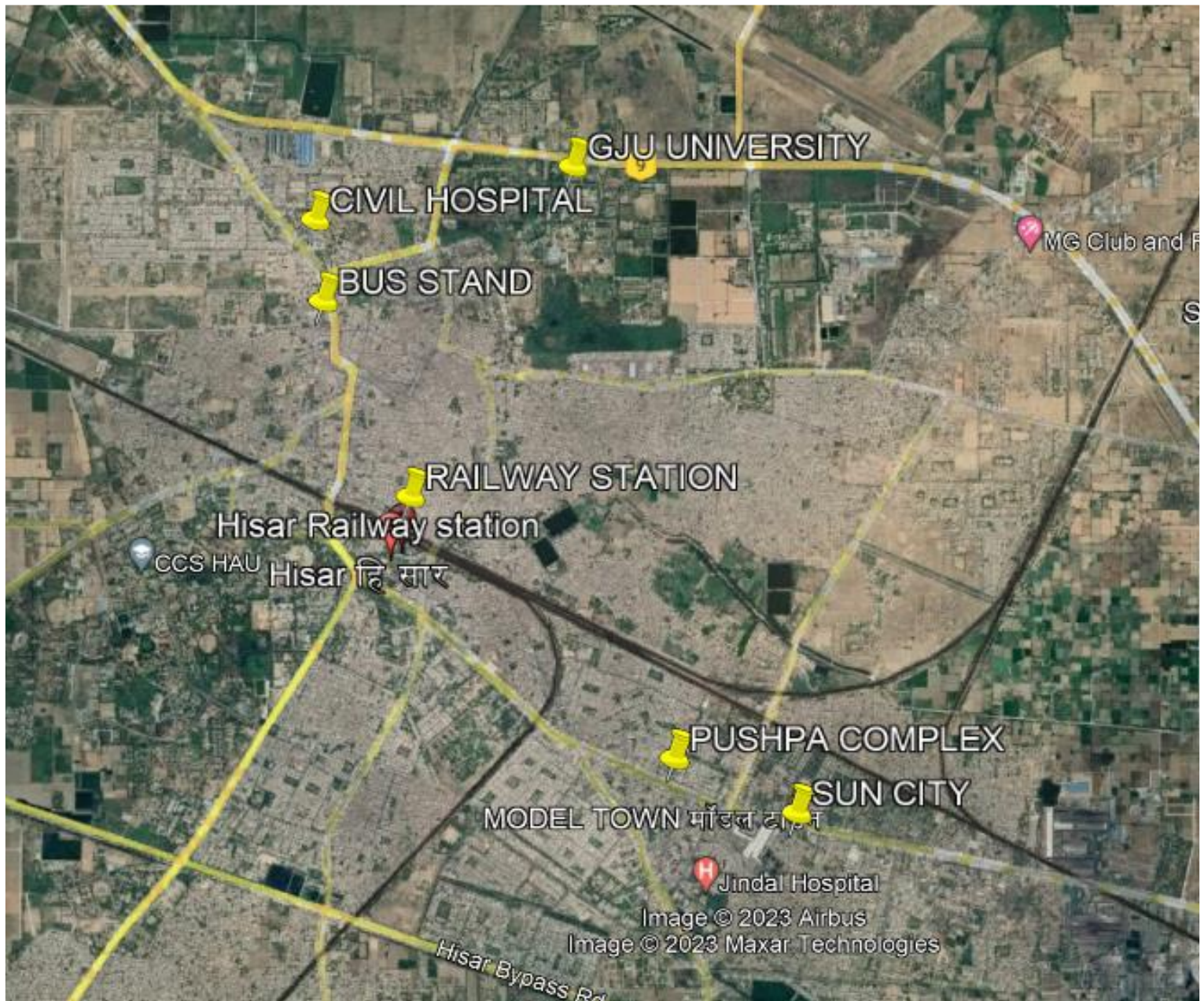
## Voice & Dynamic Data Test Drive Route



Date	Test Scenario	Area to be Covered
25 APR 2023	2G/3G/4G Voice and 3G/4G/5G Dynamic Data	<b>Starting Point BSNL EXCHANGE at 9:30 AM .SEC 14,ANAJ MANDI,GJU,AUTO MARKET,MILL GATE,MODEL TOWN,SEC 9 ,UDYOG NAGAR,SEC 16,SEC 13,,CAMRY ROAD,AZAD NAGAR,GANGWA,HAU,PREM NAGAR,MALIK CHOKH,BUS STAND,URBAN ESTATE,JINDAL INDUSTRY</b>
26V APR 2023	2G/3G/4G Voice and 3G/4G/5G Dynamic Data	<b>Starting Point BSNL EXCHANGE at 9.30 AM, HISAR TO FATHEABAD HIGHWAY AND CITY AREA COVERED</b>
27 APR 2023	Hot Spots- 2G/3G/4G/5G Static Data Tests	<b>Starting Point BSNL EXCHANGE at 9.30 AM RAILWAY STATION ,SUN CITY MALL, PUSHPA COMPLEX, GJU, UNIVERSITY, CIVIL HOSPITAL,BUS STAND</b>

# Overview

## Data Service Test- Static Locations

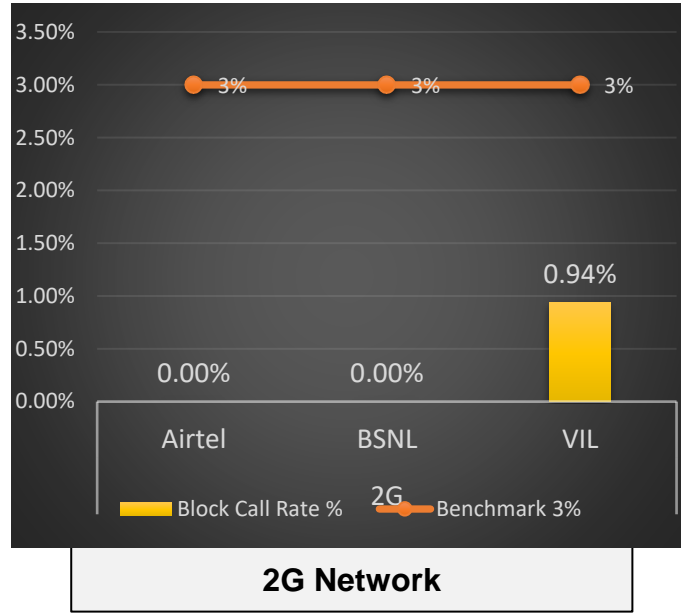
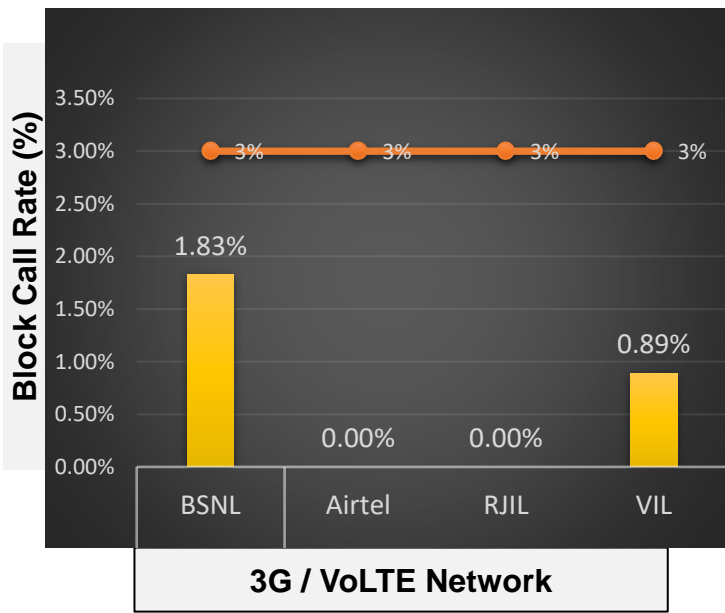
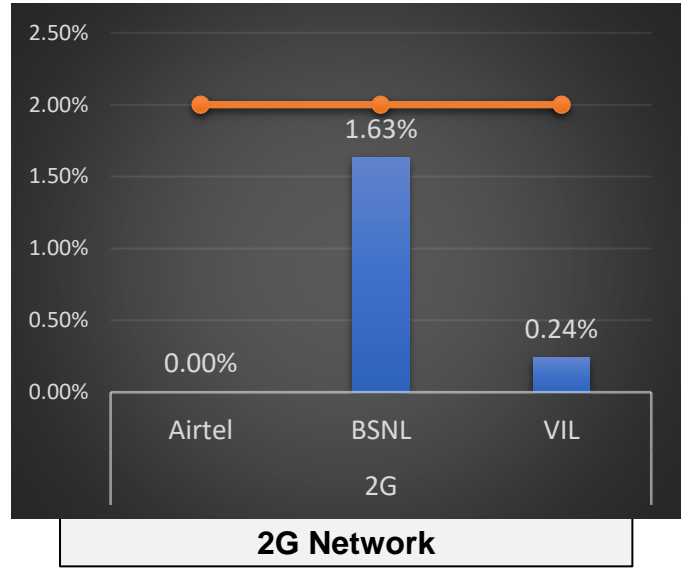
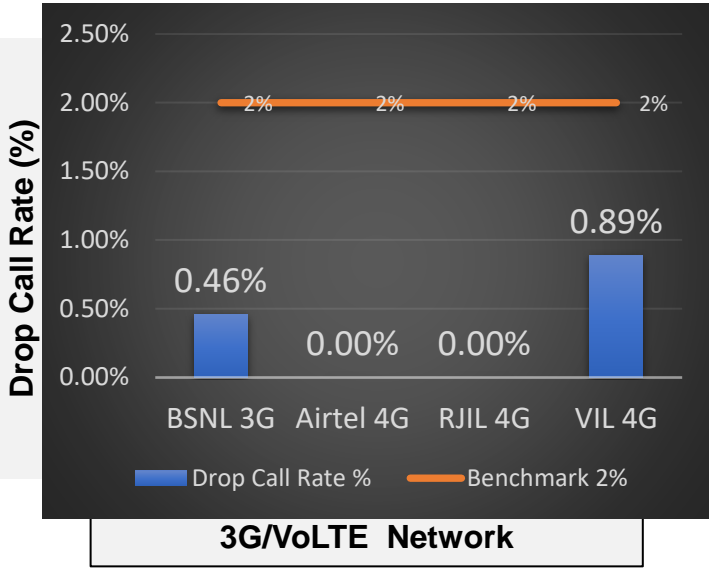


Hotspot Locations
1. Railway station
2. Suncity complex
3. Pushpa complex
4. GJU University
5. Civil hospital
6. Bus stand

# Voice Calls

## Key Observations

QoS compliance of the TSPs in Hisar for Voice across technologies 2G/3G/4G-VoLTE:



KPIs	2G			3G	4G		
	Airtel	BSNL	VIL	BSNL	Airtel	RJIL	VIL
Drop Call Rate %	0.00%	1.63%	0.24%	0.46%	0.00%	0.00%	0.89%
Block Call Rate %	0.00%	0.00%	0.94%	1.83%	0.00%	0.00%	0.89%

- a) All TSPs have met the 2% QOS benchmark of Drop Call Rate (DCR%).
- b) Call Block Rate (CBR%) benchmark of 3% was achieved by all TSP's.

# Voice Calls

## Key Observations

### Coverage

a) Percentage of coverage samples for 2G  $\geq$  -85 dBm.

TSPs	2G		
	Airtel	BSNL	VIL
Coverage %	95.00%	67.28%	92.00%

b) Percentage of coverage samples for 3G  $\geq$  -90 dBm

TSPs	3G
	BSNL
Coverage %	80.28%

c) Percentage of coverage samples for LTE  $\geq$  -110 dBm.

TSPs	VoLTE		
	Airtel	JIO	VIL
Coverage %	99.00%	99.67%	99.68%

d) Percentage of time spent on 3G/4G network

TSPs	3G	VoLTE		
	BSNL	Airtel	JIO	VIL
Time spent on 3G/4G Network %	85.70%	100.00%	100.00%	100.00%

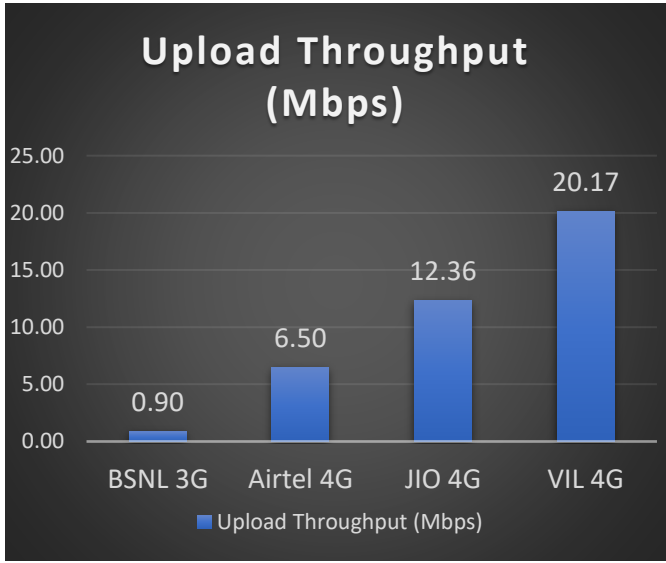
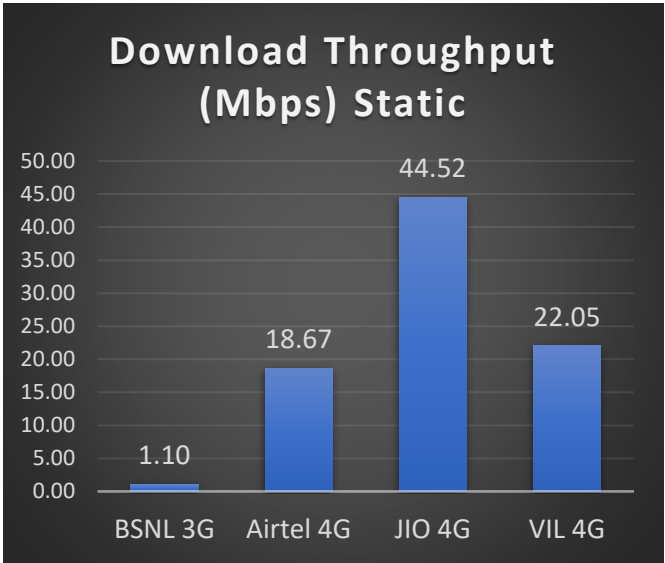
# Data Services Static

## Key Observations

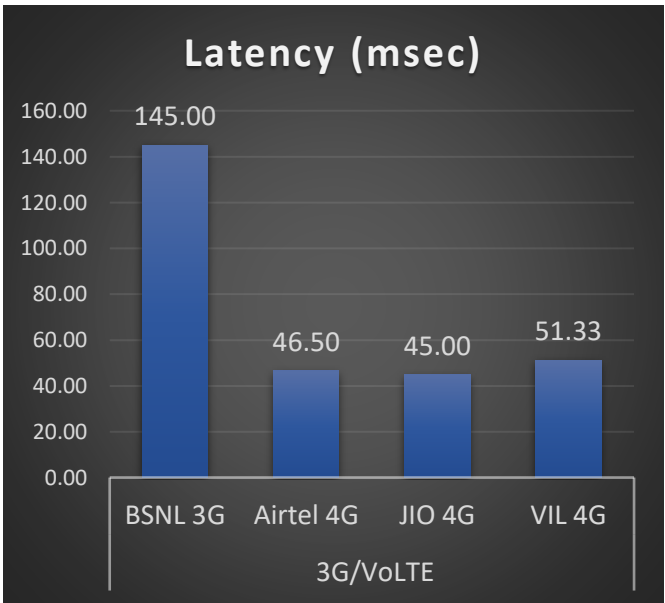
Data was tested at 6 locations .Following services were tested: Data Download/Upload, Latency (www.google.com), and Web browsing (Flipkart, Amazon, Paytm)

### Data Download and Upload Performance Static (Mbps)

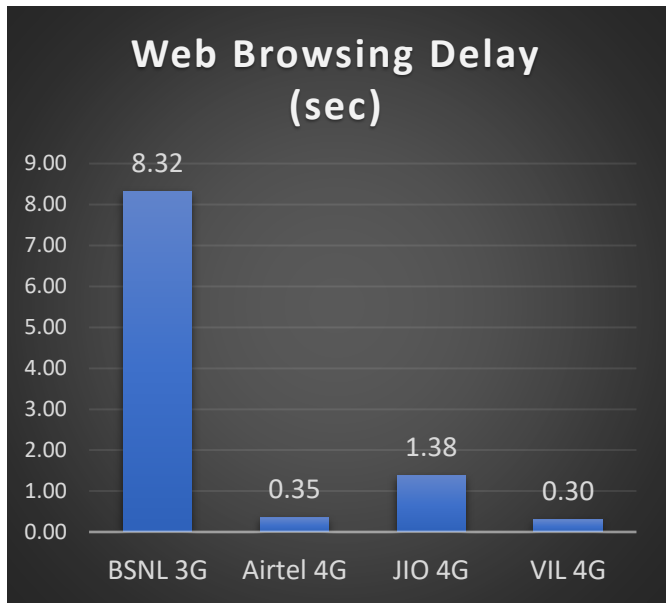
3G/4G/ Network:



### Latency (ms)



### Web Browsing (Sec)



# Data Services Dynamic

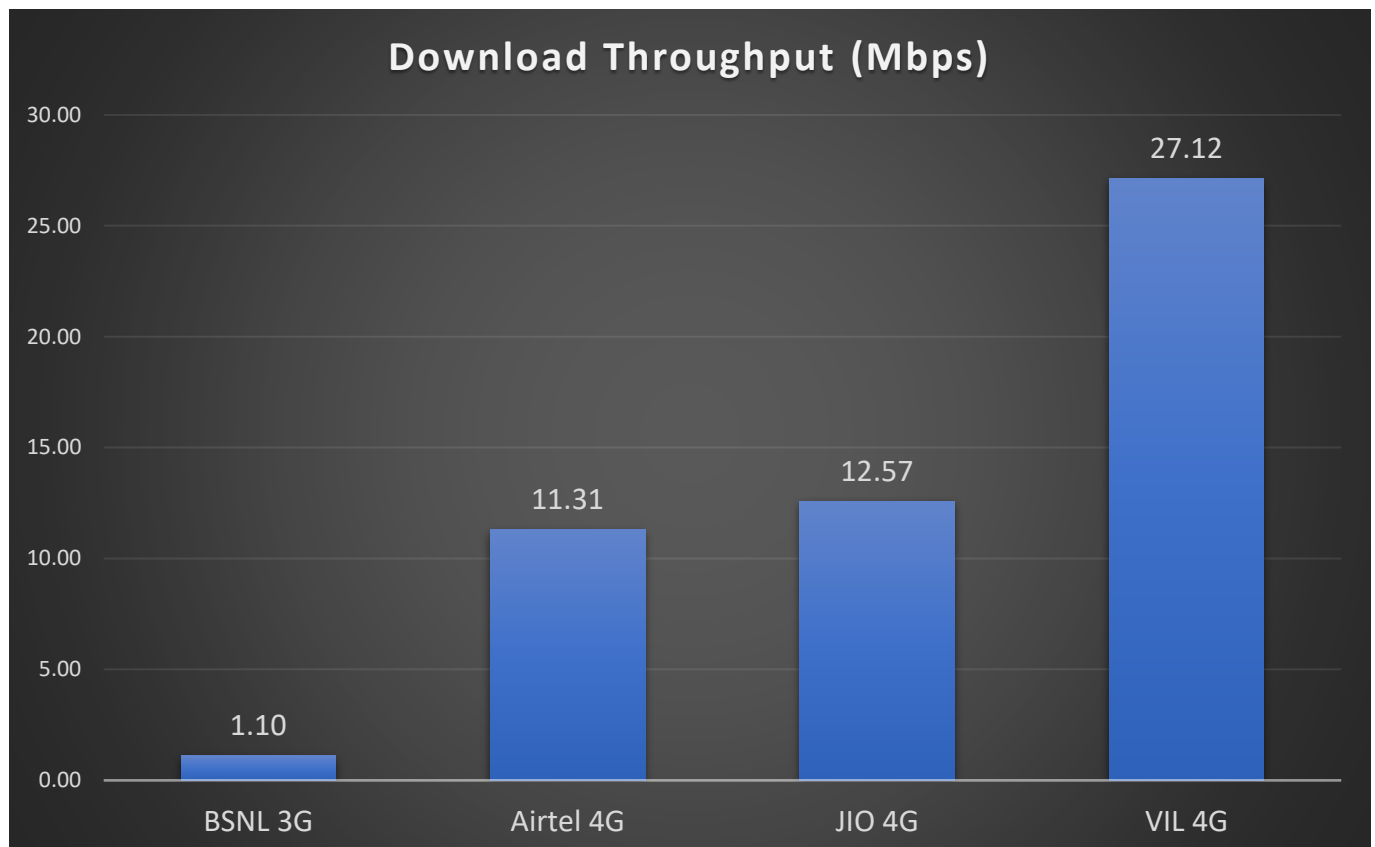
**Key Observations**

Dynamic Data was tested for whole voice route. Download Throughput was tested.

## Data Download Performance (kbps) - Dynamic

3G/4G/ Network:

Data Services Dynamic	3G/VoLTE			
	BSNL 3G	Airtel 4G	JIO 4G	VIL 4G
Download Throughput (Mbps)	1.10	11.31	12.57	27.12





# Summary

## City Level Summary-Voice

Voice Call	2G		
	Airtel	BSNL	VIL
Call Attempt	426	428	424
Blocked Call Rate (%)	0.00%	0.00%	0.94%
CSSR% (Accessibility)	100.00%	100.00%	99.05%
Drop Call Rate (%)	0.00%	1.63%	0.24%
Mobility HOSR (%)	98.24%	96.10%	97.75%
Rx Quality (%)	95.00%	98.84%	99.78%
Average CST Sec	3.80	3.10	5.07

Voice Call	3G/VoLTE			
	BSNL 3G	Airtel VoLTE	JIO VoLTE	VIL VoLTE
Call Attempt	437	442	454	449
Blocked Call Rate (%)	1.83%	0.00%	0.00%	0.89%
CSSR% (Accessibility)	98.24%	100.00%	100.00%	99.10%
Drop Call Rate (%)	0.46%	0.00%	0.00%	0.89%
Mobility HOSR (%)	100.00%	99.63%	99.39%	99.75%
Rx Quality (%)	91.88%	95.42%	92.27%	96.73%
Average CST Sec	2.90	1.50	0.56	2.38

- a) All TSPs have to met the 95% QOS benchmark of Rx Quality .
- b) Drop Call Rate (DCR%) Benchmark is 2% and Call Block Rate (CBR%) benchmark is 3%

# Summary

## City Level Summary- Data Services

Data Services Static	2G		
	Airtel	BSNL	VIL
Download Throughput (kbps)	152.00	127.00	92.49
Upload Throughput (kbps)	74.00	25.12	81.63
Web Browsing Delay (sec)	0.53	52.00	0.74
Latency (msec)	193.75	132.00	180.00

Data Services Static	3G / 4G			
	BSNL 3G	Airtel 4G	JIO 4G	VIL 4G
Download Throughput (Mbps)	1.10	18.67	44.52	22.05
Upload Throughput(Mbps)	0.90	6.50	12.36	20.17
Video Streaming Delay (sec)	5.80	0.44	0.37	0.46
Web Browsing Delay (sec)	8.32	0.35	1.38	0.30
Latency (msec)	145.00	46.50	45.00	51.33

<u>Railway Station</u>	2G		
	Airtel	BSNL	VIL
Download Throughput (kbps)	186.40	163.30	70.04
Upload Throughput (kbps)	80.40	14.34	92.90
Web Browsing Delay (sec)	0.68	52.83	0.82
Latency (msec)	247.00	162.00	169.00

<u>Sun City Mall</u>	2G		
	Airtel	BSNL	VIL
Download Throughput (kbps)	136.00	71.96	119.00
Upload Throughput (kbps)	74.00	21.30	99.90
Web Browsing Delay (sec)	0.36	74.00	0.39
Latency (msec)	246.00	121.00	153.00

<u>Pushpa Complex</u>	2G		
	Airtel	BSNL	VIL
Download Throughput (kbps)	91.00	141.23	96.10
Upload Throughput (kbps)	74.00	15.40	63.60
Web Browsing Delay (sec)	0.83	59.17	0.77
Latency (msec)	213.00	271.00	213.00

<u>GJU University</u>	2G		
	Airtel	BSNL	VIL
Download Throughput (kbps)	171.00	172.18	98.90
Upload Throughput (kbps)	97.00	22.85	93.90
Web Browsing Delay (sec)	0.53	56.00	0.66
Latency (msec)	137.00	134.00	165.00

<u>Civil Hospital</u>	2G		
	Airtel	BSNL	VIL
Download Throughput (kbps)	145.00	155.60	86.00
Upload Throughput (kbps)	61.00	19.18	71.50
Web Browsing Delay (sec)	0.58	73.13	0.82
Latency (msec)	224.00	177.00	190.00

<u>Bus Stand</u>	2G		
	Airtel	BSNL	VIL
Download Throughput (kbps)	149.00	144.20	84.90
Upload Throughput (kbps)	65.00	33.10	68.00
Web Browsing Delay (sec)	0.57	56.13	0.95
Latency (msec)	201.00	193.00	190.00

# Data Services static

<u>Railway Station</u>	3G	4G		
	BSNL	Airtel	Jio	VIL
Download Throughput (mbps)	3.17	11.50	48.14	28.80
Upload Throughput (mbps)	1.06	4.40	11.96	27.90
Video Streaming Delay ( Secs.)	4.10	0.45	0.38	0.36
Web Browsing Delay (sec)	6.86	0.94	1.33	0.21
Latency (msec)	72.00	59.00	42.00	38.00

<u>Sun City Mall</u>	3G	4G		
	BSNL	Airtel	Jio	VIL
Download Throughput (mbps)	6.58	29.40	57.20	16.30
Upload Throughput (mbps)	1.98	7.50	20.83	22.30
Video Streaming Delay ( Secs.)	8.90	0.37	0.38	0.42
Web Browsing Delay (sec)	6.90	0.05	1.29	0.39
Latency (msec)	39.00	50.00	42.00	35.00

<u>Pushpa Complex</u>	3G	4G		
	BSNL	Airtel	Jio	VIL
Download Throughput (mbps)	4.19	23.00	37.63	14.30
Upload Throughput (mbps)	1.80	6.20	6.58	3.34
Video Streaming Delay ( Secs.)	4.03	0.53	0.35	0.56
Web Browsing Delay (sec)	6.12	0.09	1.39	0.43
Latency (msec)	48.00	77.00	43.00	41.00

# Data Services static

<u>GJU University</u>	3G	4G		
	BSNL	Airtel	Jio	VIL
Download Throughput (mbps)	2.84	16.40	42.62	10.90
Upload Throughput (mbps)	0.88	5.50	19.25	19.90
Video Streaming Delay ( Secs.)	6.30	0.55	0.36	0.58
Web Browsing Delay (sec)	9.16	0.03	1.36	0.25
Latency (msec)	134.00	38.00	47.00	40.00

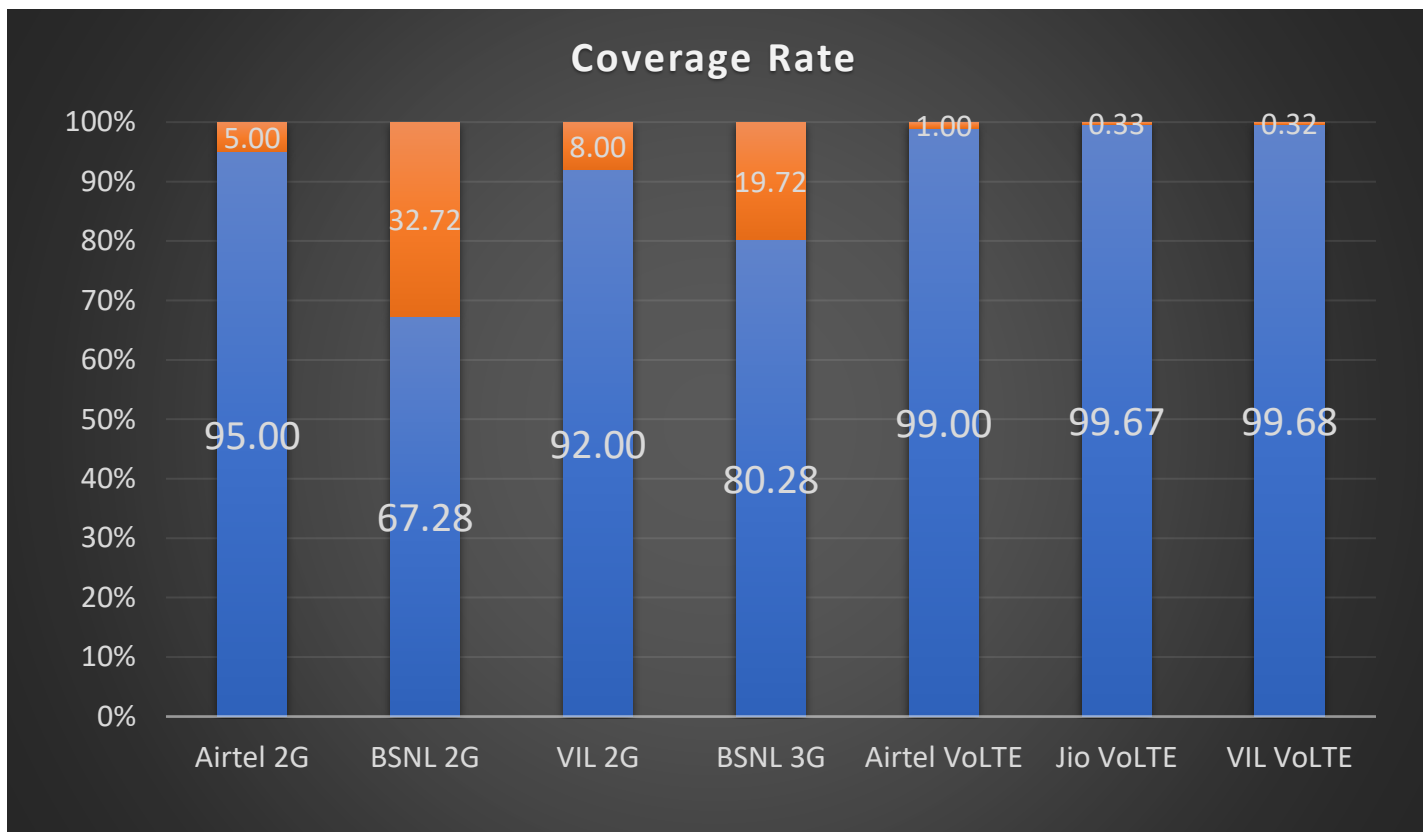
<u>Civil Hospital</u>	3G	4G		
	BSNL	Airtel	Jio	VIL
Download Throughput (mbps)	3.16	9.40	54.90	49.40
Upload Throughput (mbps)	1.55	5.80	8.52	27.60
Video Streaming Delay ( Secs.)	6.50	0.49	0.35	0.32
Web Browsing Delay (sec)	88.50	0.07	1.46	0.19
Latency (msec)	188.00	86.00	50.00	80.00

<u>Bus Stand</u>	3G	4G		
	BSNL	Airtel	Jio	VIL
Download Throughput (mbps)	4.39	35.10	29.63	12.60
Upload Throughput (mbps)	1.50	8.60	7.12	20.01
Video Streaming Delay ( Secs.)	4.10	0.42	0.42	0.53
Web Browsing Delay (sec)	8.45	0.08	1.45	0.34
Latency (msec)	62.00	34.00	45.00	74.00

## Coverage Details

RF Coverage relates to the geographical footprint within the system that has sufficient RF signal strength to provide for a call session. The Coverage rate is calculated on the basis of % of samples in which the Rx level  $\geq$  -85 dBm, RSCP is  $\geq$  -90 dBm & RSRP  $\geq$  -110dBm. The details are as follows.

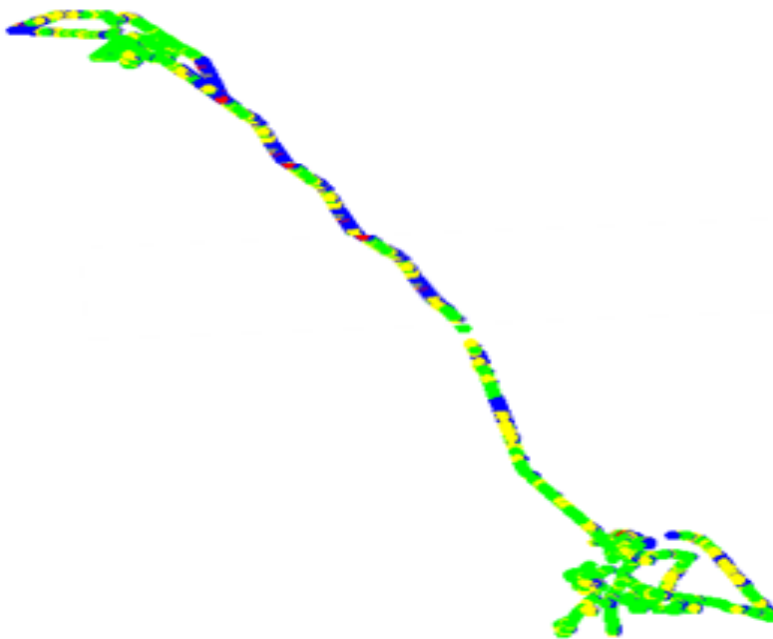
TSP	Coverage Rate %
Airtel 2G	95.00%
BSNL 2G	67.28%
VIL 2G	92.00%
BSNL 3G	80.28%
Airtel VoLTE	99.00%
Jio VoLTE	99.67%
VIL VoLTE	99.68%



## TSP-AIRTEL

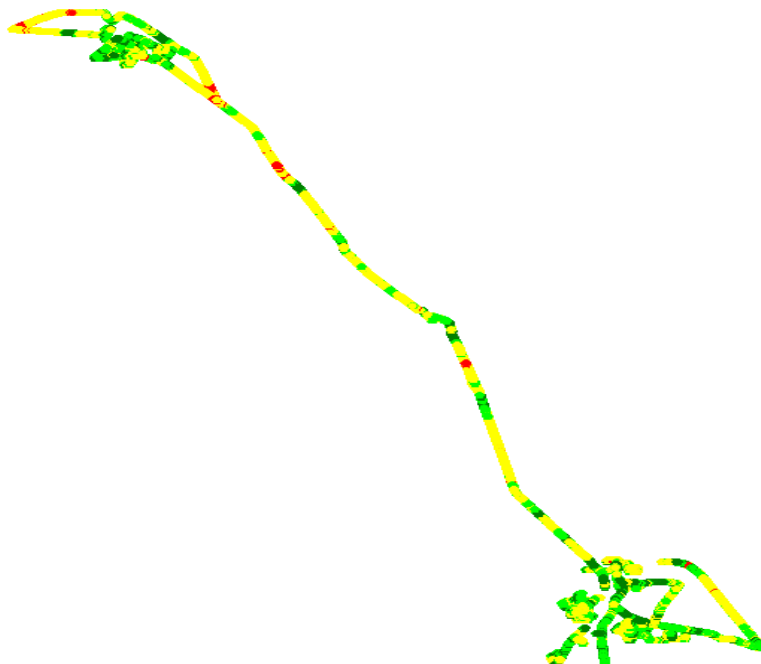
Technology	Coverage %
2G	95.00%
VoLTE	99.00%

2G



2G			
Overall RxLevel	# Samples	% PDF	Legends
[Max, >=-75]	3380591	72%	Green
[-75, >=-85]	1101309	23%	Yellow
[-85, >=-95]	184737	4%	Blue
[-95, >=Min)	28303	1%	Red
<b>Total</b>	<b>4694940</b>	<b>100%</b>	

VoLTE



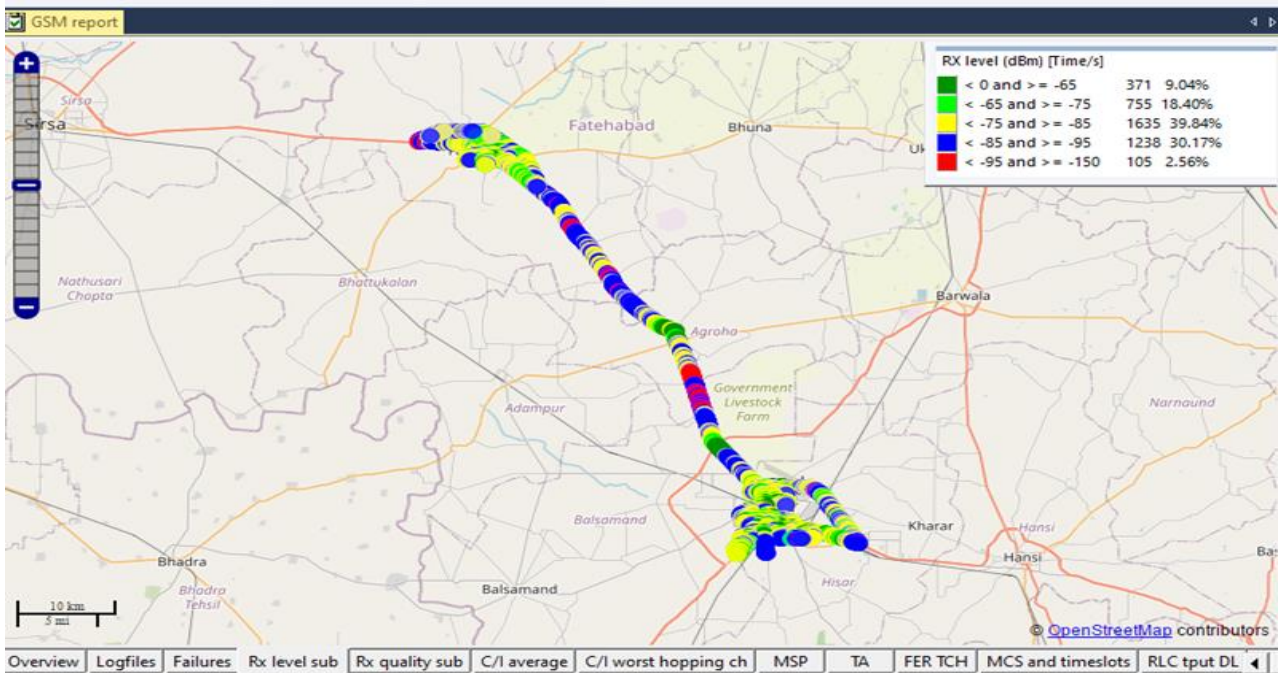
VoLTE			
Overall RSRP	# Samples	% PDF	Legends
[Max, >=-80]	1237047	23%	Green
[-80, >=-90]	2442116	45%	Yellow
[-90, >=-110]	1749892	32%	Orange
[-110, >=Min)	39437	1%	Red
<b>Total</b>	<b>5468412</b>	<b>100%</b>	



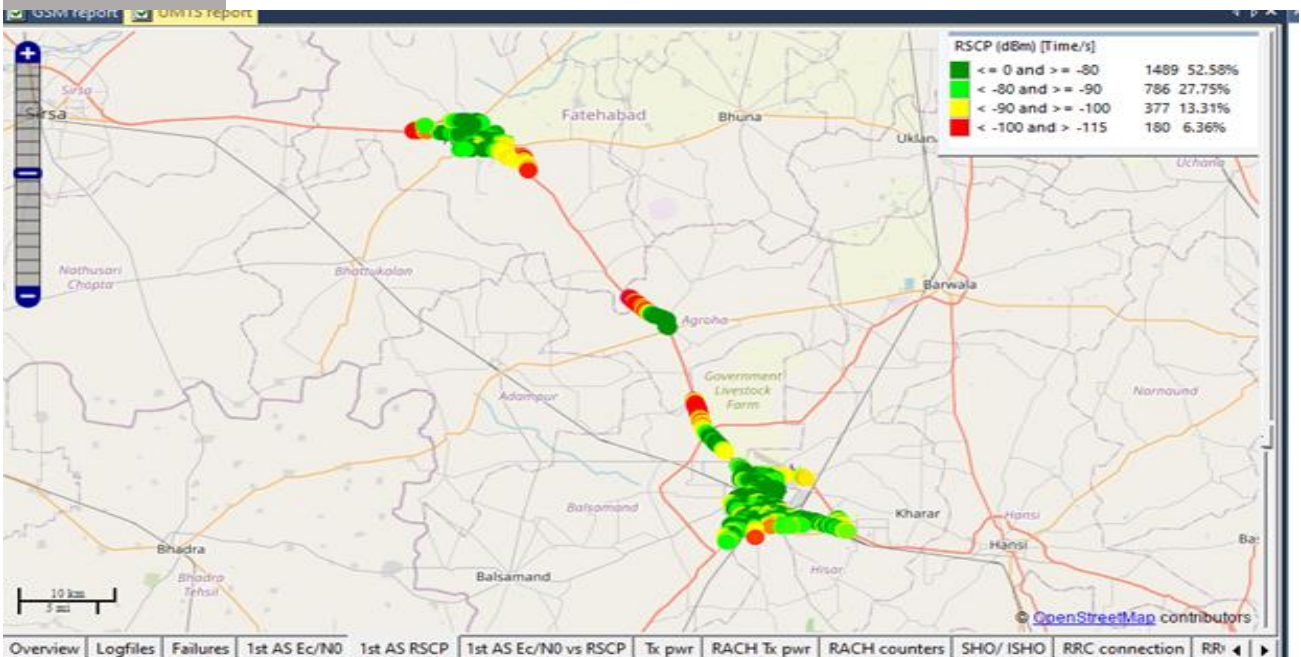
## TSP- BSNL

Technology	Coverage %
2G	67.28%
3G	80.28%

2G

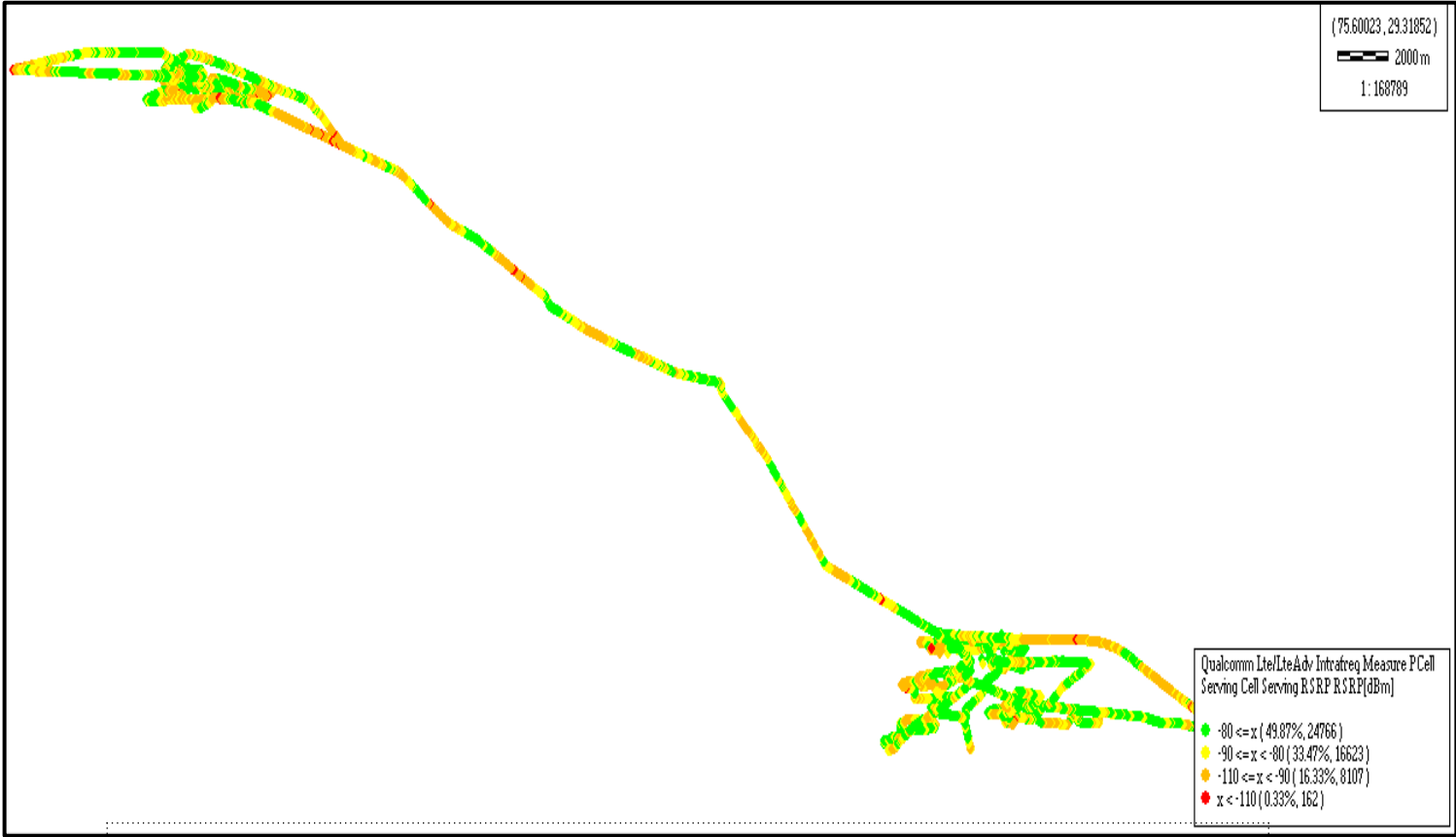






3G



JIO

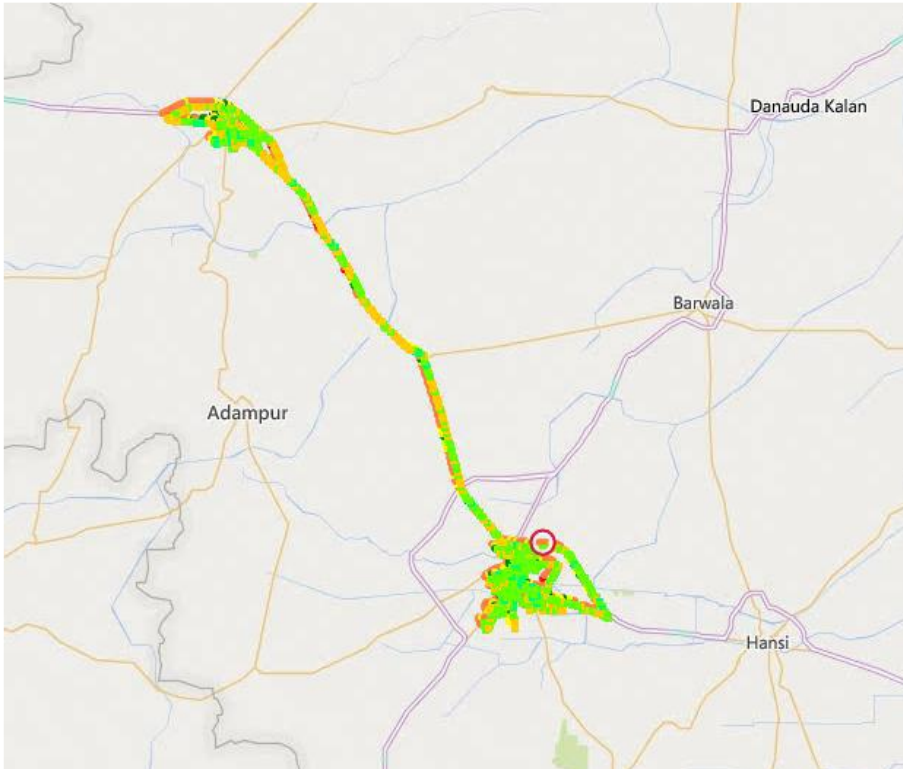
Technology	Coverage %
VoLTE	99.67%



VoLTE			
Overall RSRP	# Samples	% PDF	Legends
[Max, >=-80]	24766	69.71	
[-80, >=-90)	16623	15.61	
[-90, >=-110)	8107	14.29	
[-110, >=Min)	162	.39	
<b>Total</b>	<b>49658</b>	<b>100%</b>	

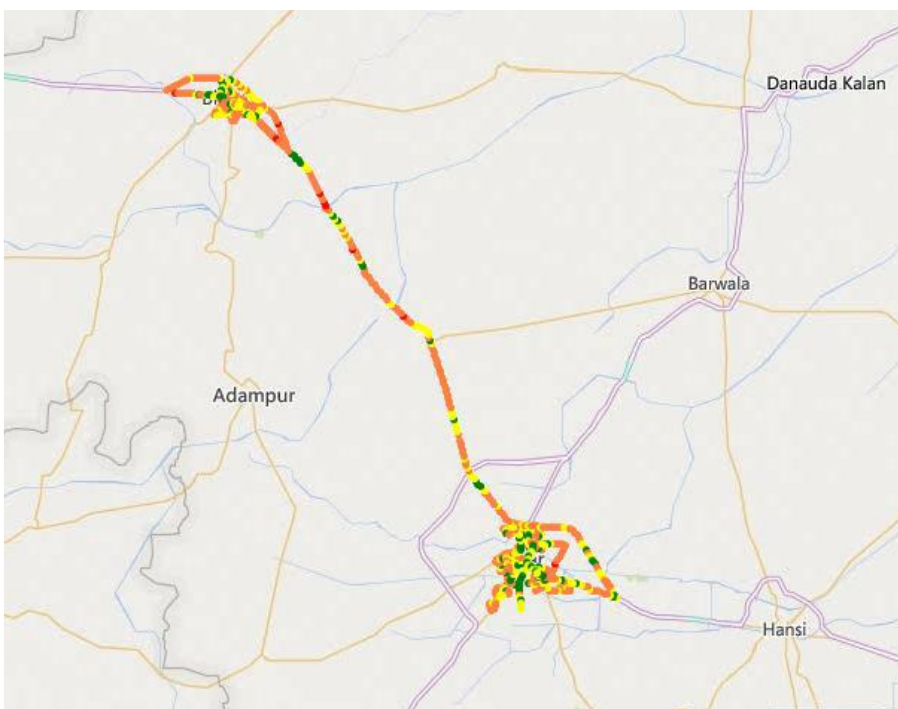
## VIL

	Technology	Coverage Rate %
<b>2G</b>	2G	<b>92.00%</b>
	VoLTE	<b>99.68%</b>



Overall RxLevel	# Samples	% PDF	Legends
[Max, >=-75]	805139	65	Green
[-75, >=-85]	334333	27	Yellow
[-85, >=-95]	82252	7	Orange
[-95, >=Min]	8655	1	Red
<b>Total</b>	<b>1230379</b>	<b>100%</b>	

## VoLTE

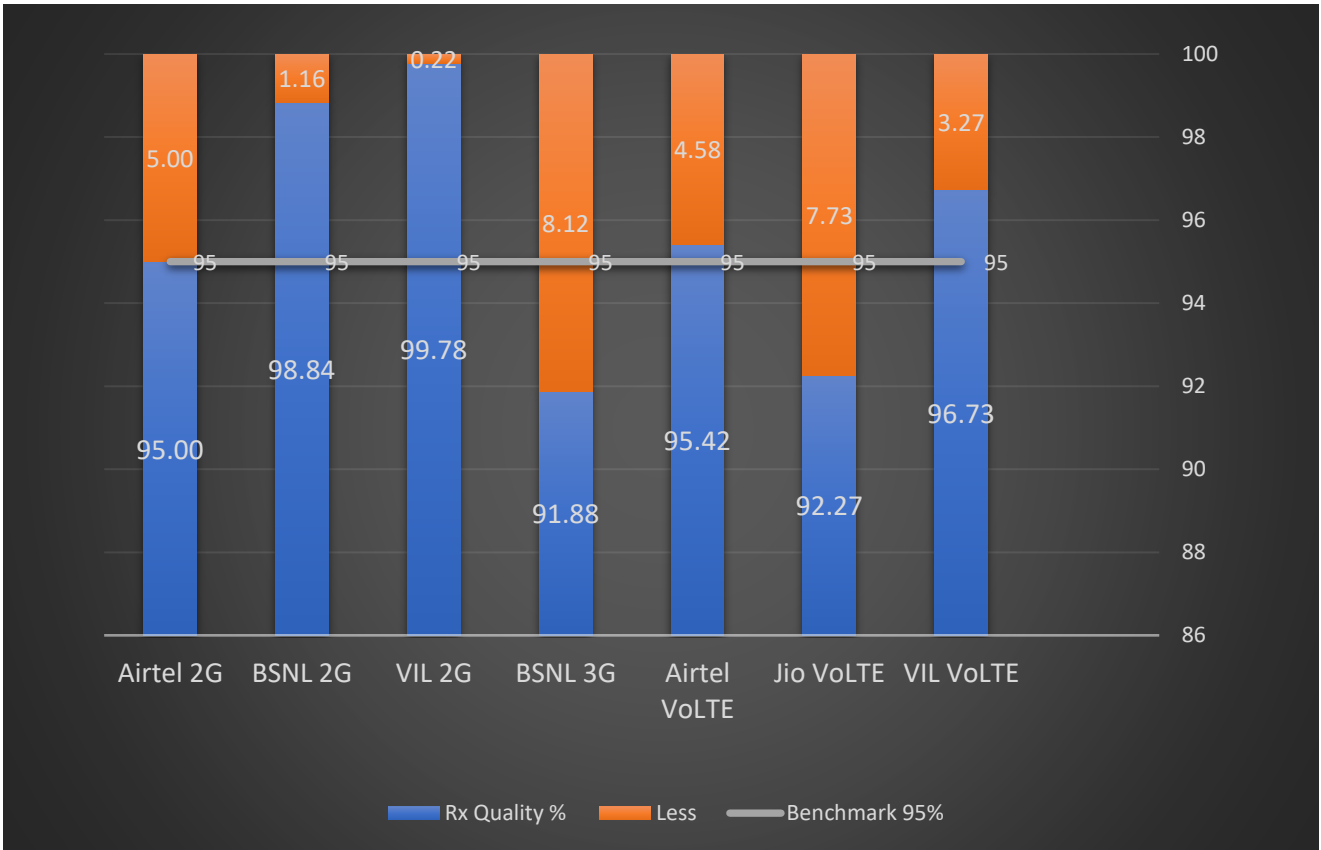


VoLTE /5G			
Overall RSRP	# Samples	% PDF	Legends
[Max, >=-80]	5987281	41.07%	Green
[-80, >=-90]	1426882	9.79%	Yellow
[-90, >=-110]	7116476	48.82%	Orange
[-110, >=Min]	46360	0.32%	Red
<b>Total</b>	<b>14576999</b>	<b>100%</b>	

## II. Quality Details

For measuring voice quality, as per the QoS norms, RxQual  $\leq 5$  for GSM TSPs, EcNo  $\geq -14$  dBm for 3G TSP sand SINR  $> 0$  in case of VoLTE is considered to be good, where as quality beyond this benchmark is considered to be bad. The benchmark should usually be  $\geq 95\%$ .

TSP	Rx Quality %
Airtel 2G	95.00%
BSNL 2G	98.84%
VIL 2G	99.78%
BSNL 3G	91.88%
Airtel VoLTE	95.42%
Jio VoLTE	92.27%
VIL VoLTE	96.73%



## II. Quality Details

### Airtel

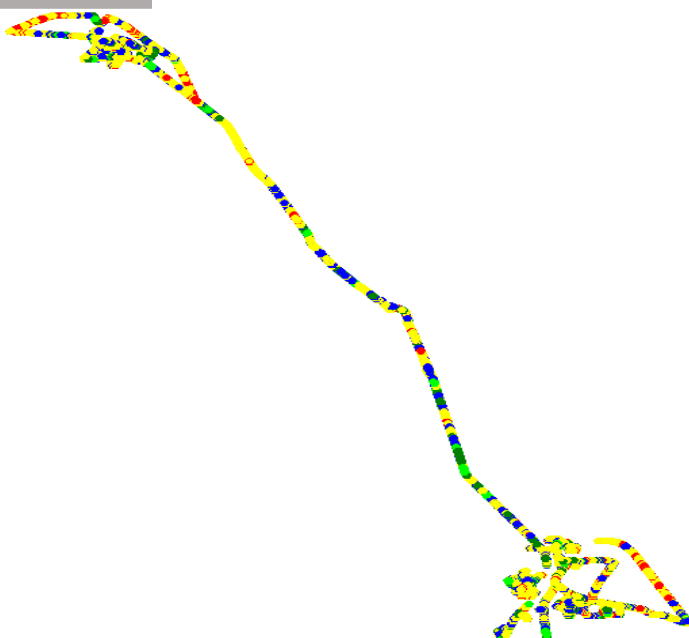
Technology	Rx Quality %
2G	95.00%
VoLTE	95.42%

2G



Overall Rx Quality	# Samples	% PDF	Legends
(Min, <=2)	7144840	88%	Green
(2, <=3)	194889	2%	Yellow
(3, <=4)	186732	2%	Blue
(4, <=5)	197981	3%	Orange
(5, <=Max)	416808	5%	Red
<b>Total</b>	<b>8141250</b>	<b>100%</b>	

VoLTE



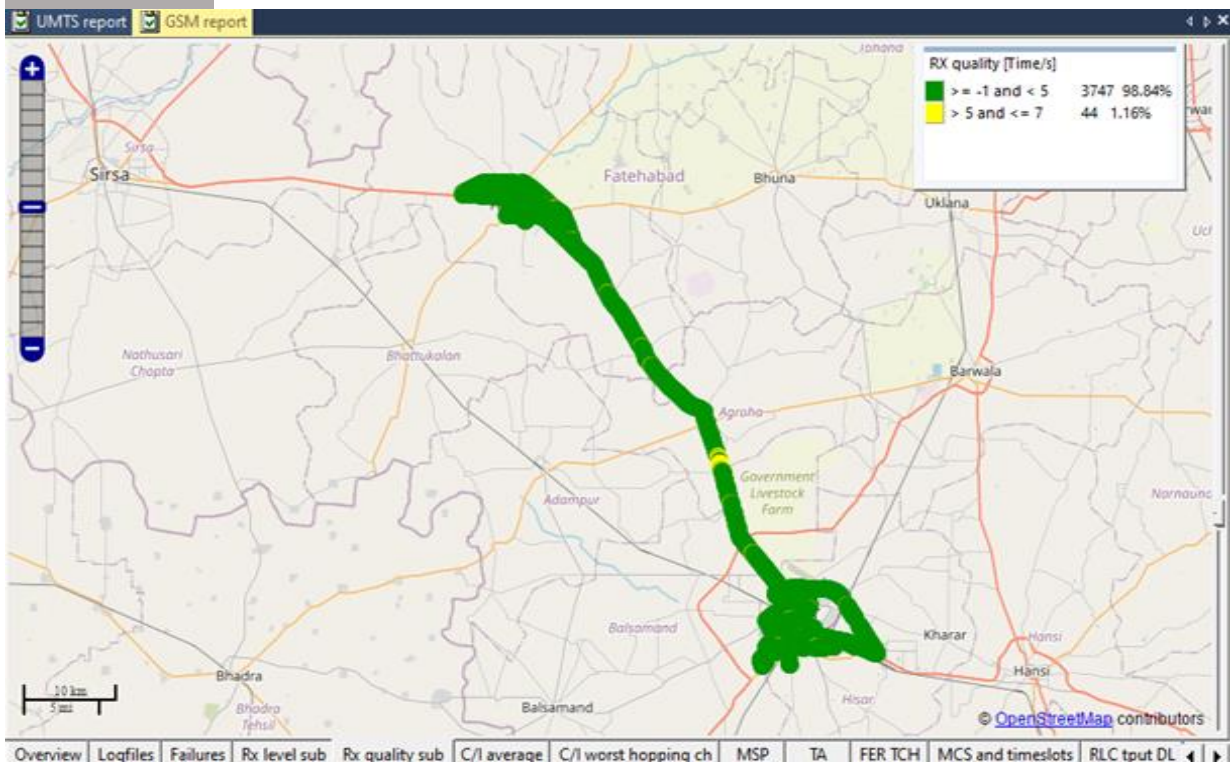
Overall SINR	# Samples	% PDF	Legends
(Min, <=0)	255191	4.58%	Red
(0, <=5)	3131299	56.23%	Yellow
(5, <=10)	1264104	22.70%	Blue
(10, <=15)	619401	11.12%	Green
(15, <=Max)	299089	5.37%	Light Green
<b>Total</b>	<b>5569084</b>	<b>100%</b>	

## II. Quality Details

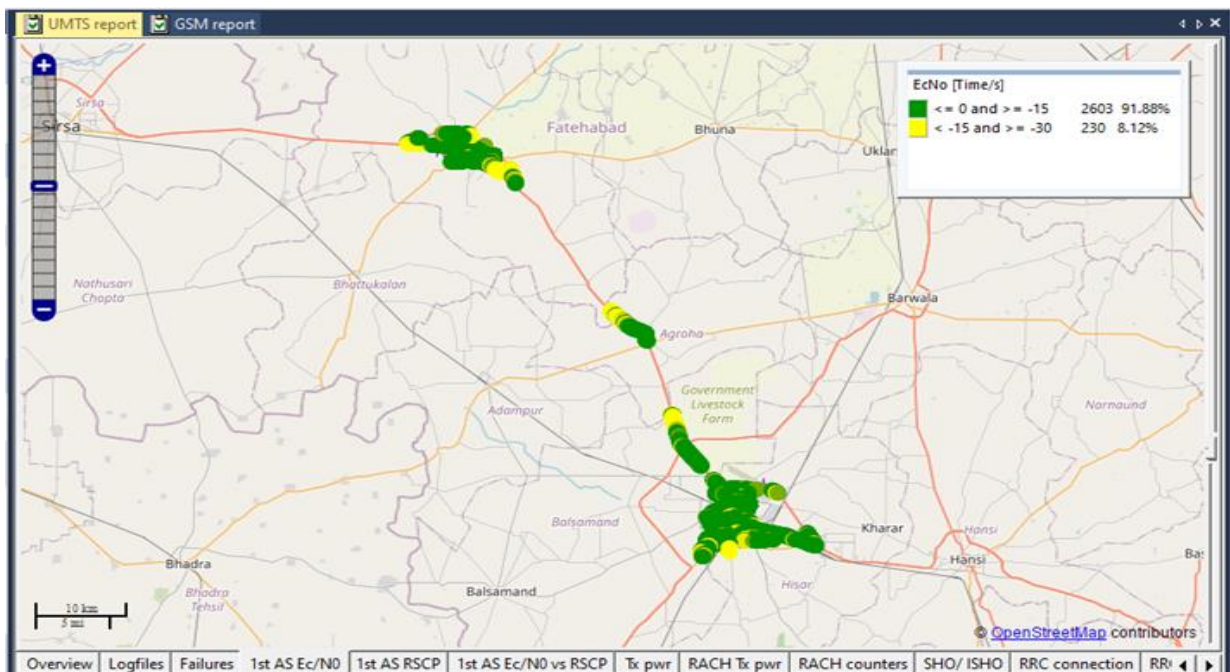
### BSNL

Technology	Rx Quality %
2G	<b>98.84%</b>
3G	<b>91.88%</b>

2G



3G

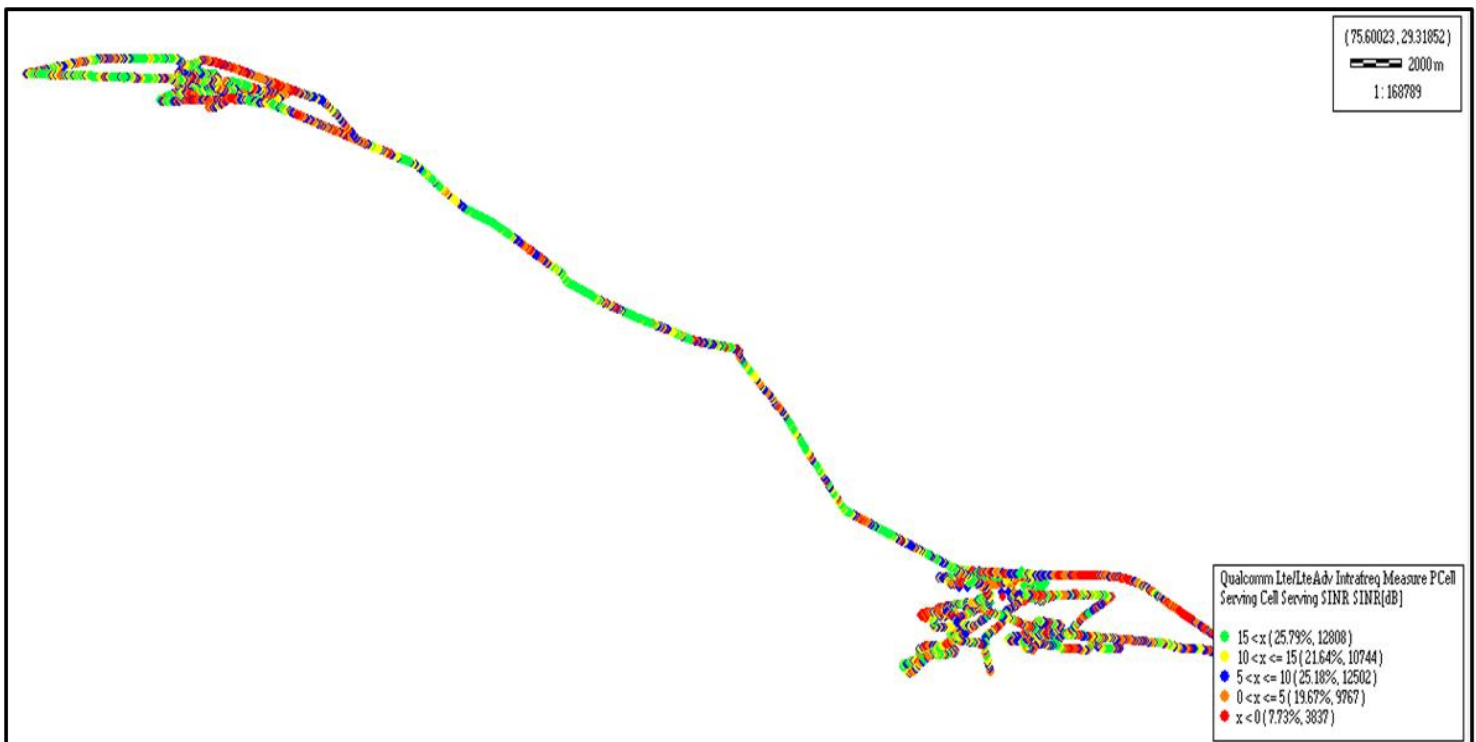


# Quality Details

For measuring voice quality, as per the QoS norms, RxQual  $\leq 5$  for GSM TSPs, EcNo  $\geq -14$  dBm for 3G TSP and SINR  $> 0$  in case of VoLTE is considered to be good, where as quality beyond this benchmark is considered to be bad. The benchmark should usually be  $\geq 95\%$ .

## JIO

Technology	Rx Quality %
VoLTE	<b>92.27%</b>



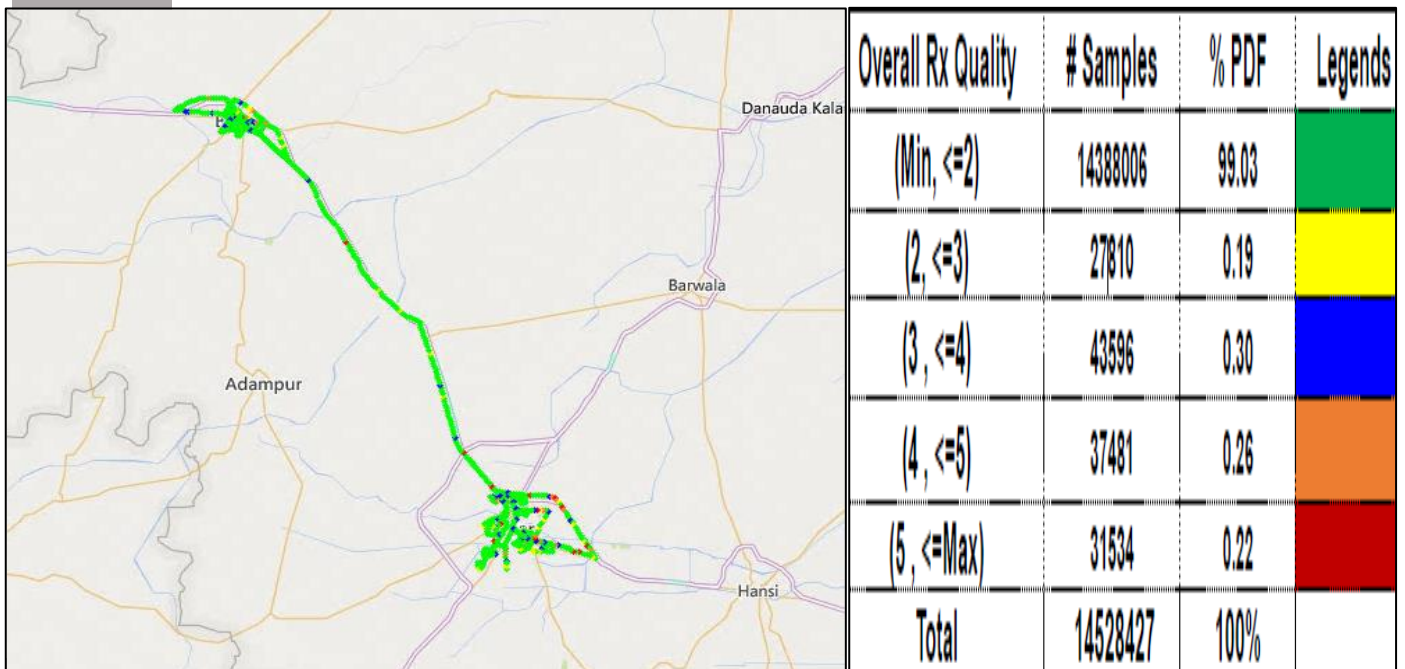
Overall SINR	# Samples	% PDF	Legends
(Min, $\leq 0$ )	3837	7.73	
(0, $\leq 5$ )	9767	19.67	
(5, $\leq 10$ )	12502	25.18	
(10, $\leq 15$ )	10744	21.64	
(15, $\leq \text{Max}$ )	12808	25.79	
<b>Total</b>	<b>49658</b>	<b>100%</b>	

## II. Quality Details

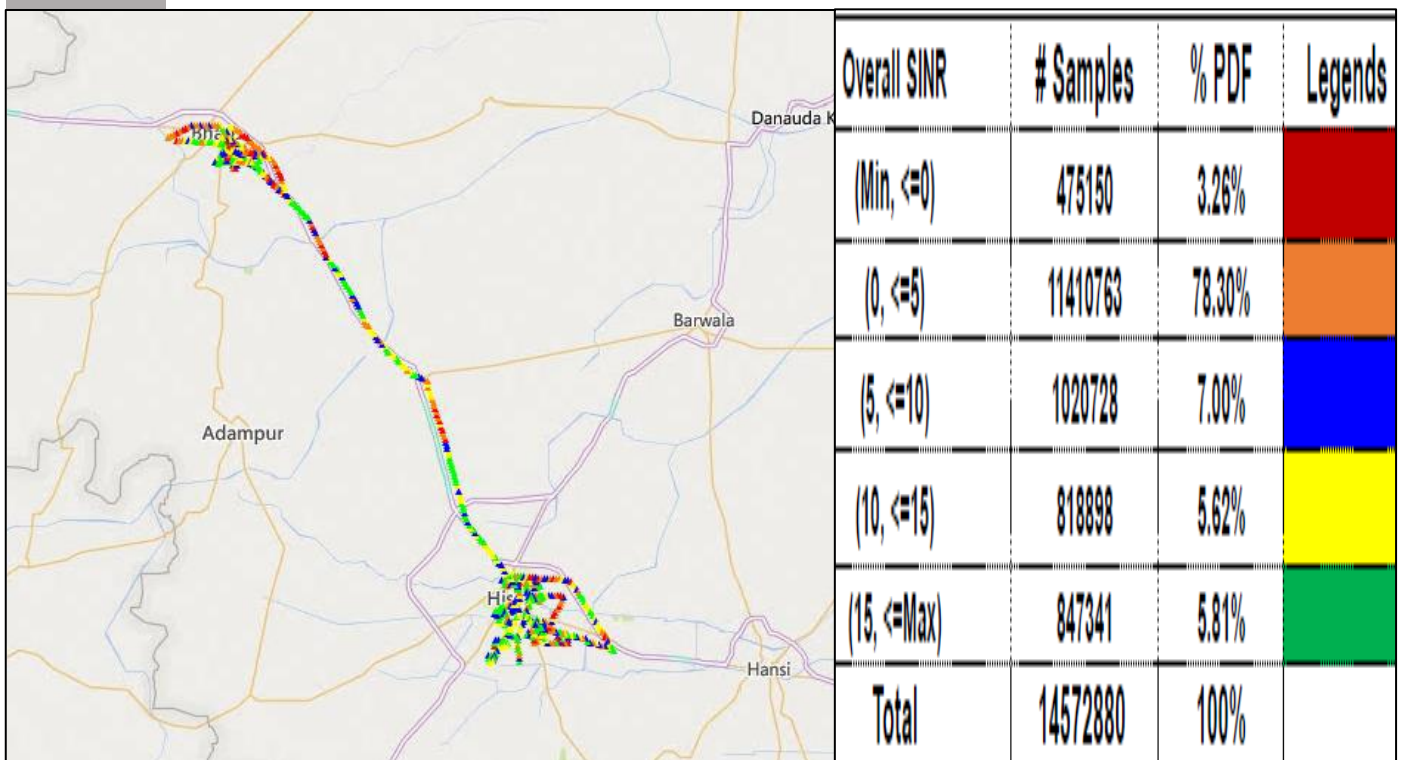
### VIL

Technology	Rx Quality %
2G	99.78%
4G	96.73%

#### 2G



#### VoLTE





### III. Technology Details

TSP	% of Time Spent on 3G/VoLTE
BSNL 3G	85.70
Airtel VoLTE	100.00
Jio VoLTE	100.00
VIL VoLTE	100.00

